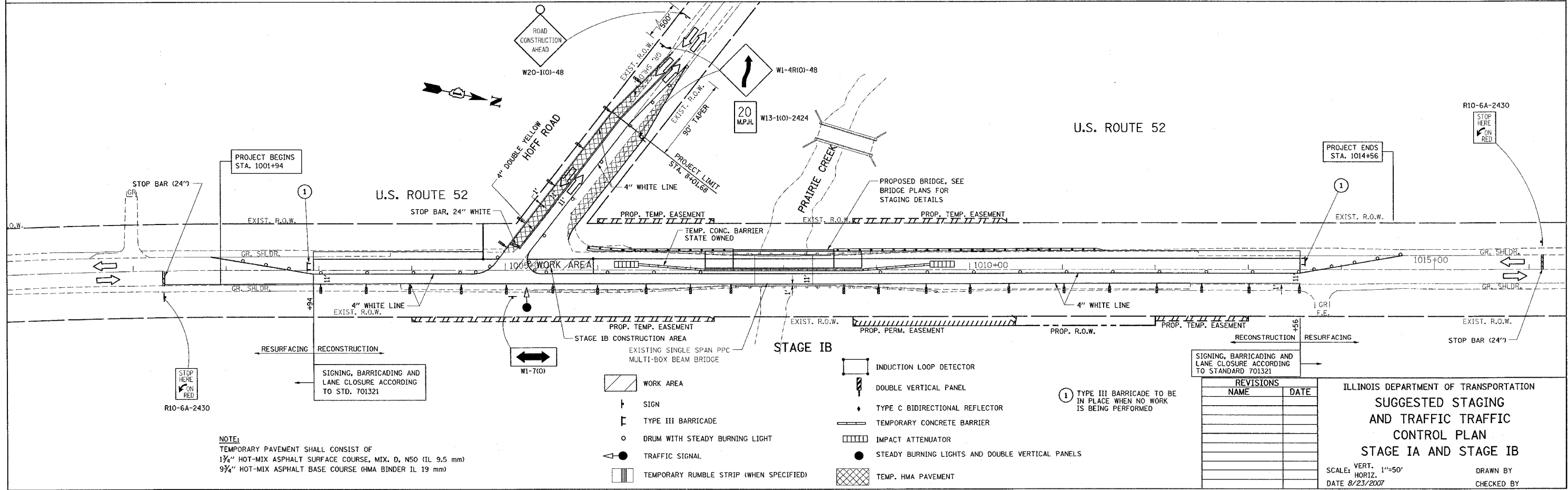
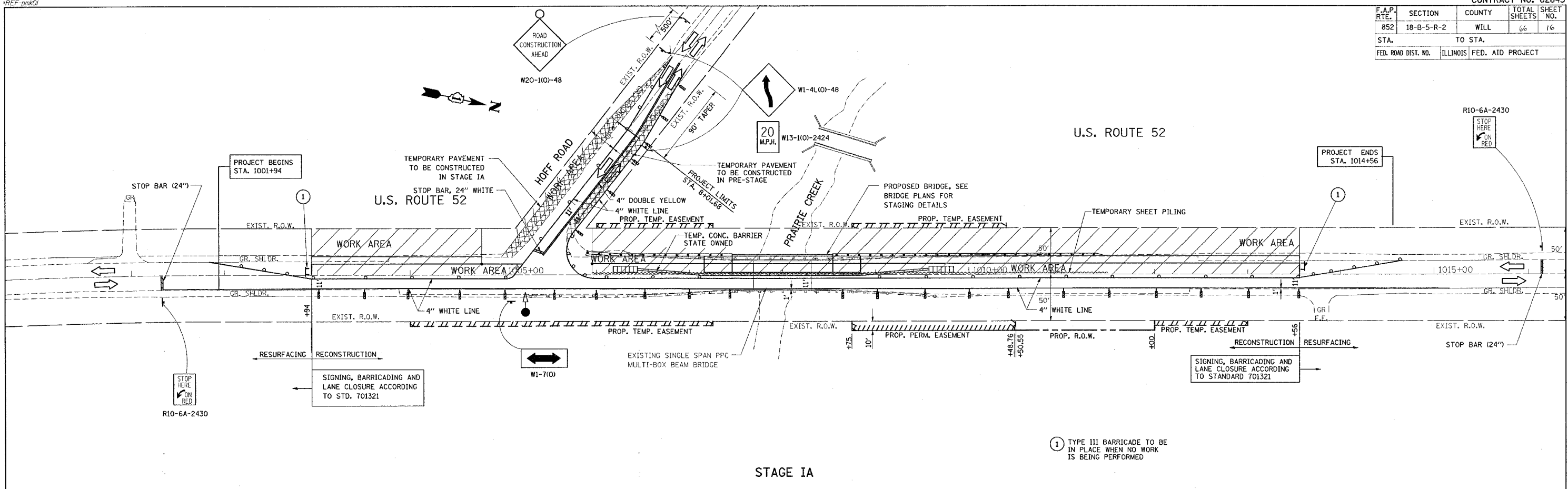


F.A.P. RTE.	SECTION	COUNTY	TOTAL SHEETS	SHEET NO.
852	18-B-5-R-2	WILL	66	16
STA.	TO STA.			
FED. ROAD DIST. NO.	ILLINOIS	FED. AID PROJECT		



NOTE:  
 TEMPORARY PAVEMENT SHALL CONSIST OF  
 1 3/4" HOT-MIX ASPHALT SURFACE COURSE, MIX. D, NSO (IL 9.5 mm)  
 9 3/4" HOT-MIX ASPHALT BASE COURSE (HMA BINDER IL 19 mm)

- WORK AREA
- SIGN
- TYPE III BARRICADE
- DRUM WITH STEADY BURNING LIGHT
- TRAFFIC SIGNAL
- TEMPORARY RUMBLE STRIP (WHEN SPECIFIED)
- INDUCTION LOOP DETECTOR
- DOUBLE VERTICAL PANEL
- TYPE C BIDIRECTIONAL REFLECTOR
- TEMPORARY CONCRETE BARRIER
- IMPACT ATTENUATOR
- STEADY BURNING LIGHTS AND DOUBLE VERTICAL PANELS
- TEMP. HMA PAVEMENT

SIGNING, BARRICADING AND LANE CLOSURE ACCORDING TO STANDARD 701321

REVISIONS	
NAME	DATE

ILLINOIS DEPARTMENT OF TRANSPORTATION  
**SUGGESTED STAGING  
 AND TRAFFIC CONTROL PLAN**  
**STAGE IA AND STAGE IB**  
 SCALE: VERT. 1"=50'  
 HORIZ. DATE 8/23/2007  
 DRAWN BY  
 CHECKED BY

PLOT DATE = 8/23/2007  
 FILE NAME = c:\projects\14980\ah.stage.dgn  
 PLOT SCALE = 89.0000 / IN.  
 USER NAME = baumrd.