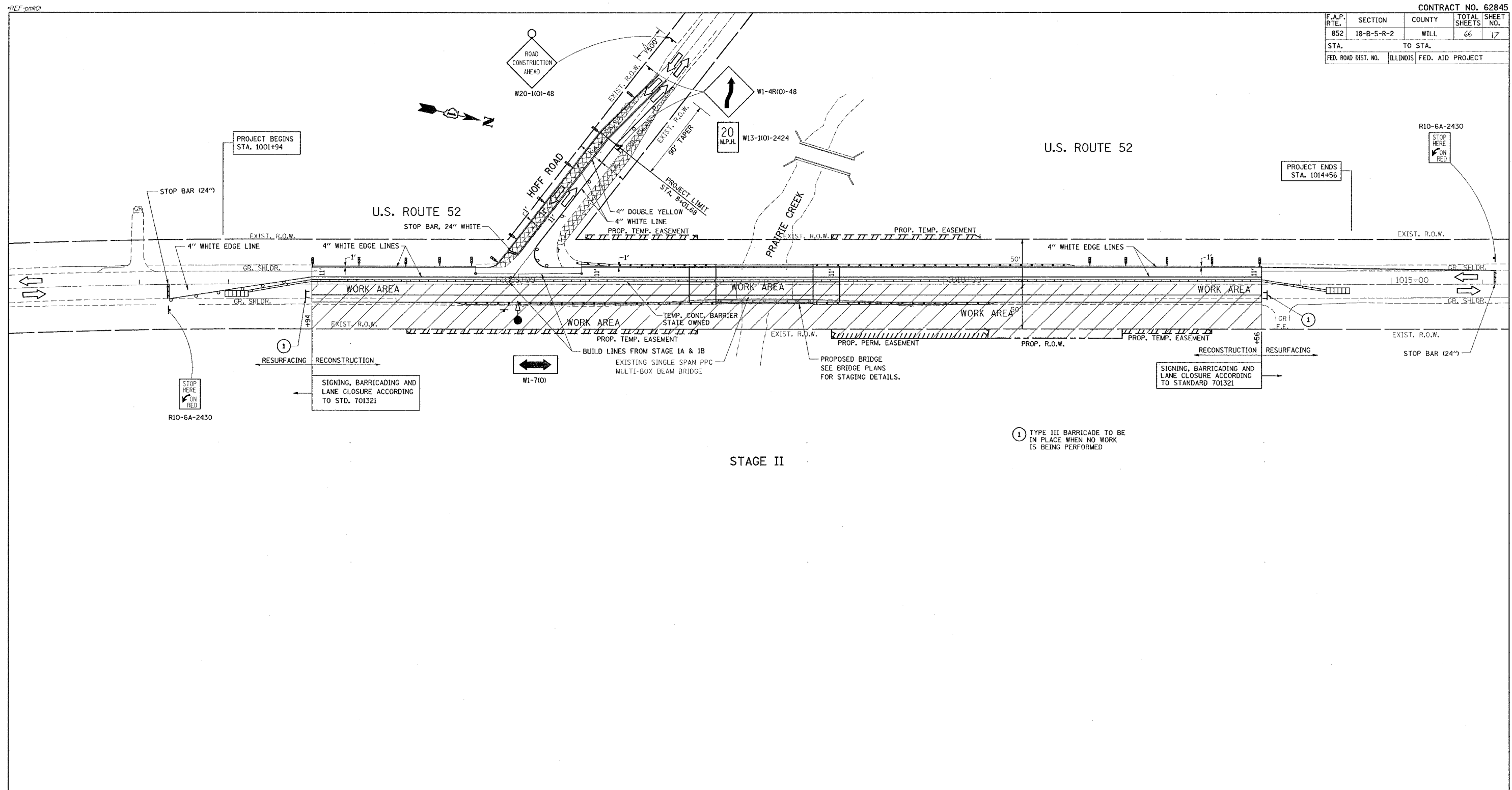
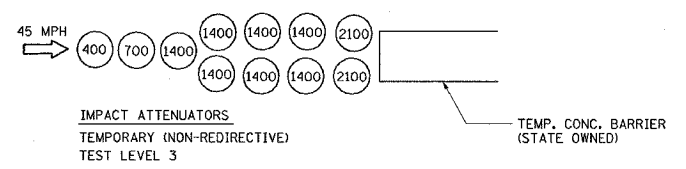


F.A.P. RTE.	SECTION	COUNTY	TOTAL SHEETS	SHEET NO.
852	18-B-5-R-2	WILL	66	17
STA.		TO STA.		
FED. ROAD DIST. NO.		ILLINOIS	FED. AID PROJECT	



PLOT DATE = 8/10/2007
 FILE NAME = c:\projects\p149801\ah_sstagadgn
 PLOT SCALE = 80.0000 / IN.
 USER NAME = lissnerf



- STAGE II**
- WORK AREA
 - SIGN
 - TYPE III BARRICADE
 - DRUM WITH STEADY BURNING LIGHT
 - TRAFFIC SIGNAL
 - TEMPORARY RUMBLE STRIP (WHEN SPECIFIED)
 - INDUCTION LOOP DETECTOR
 - DOUBLE VERTICAL PANEL
 - TYPE C BIDIRECTIONAL REFLECTOR
 - TEMPORARY CONCRETE BARRIER
 - IMPACT ATTENUATOR
 - STEADY BURNING LIGHTS AND DOUBLE VERTICAL PANELS
 - TEMP. HMA PAVEMENT

① TYPE III BARRICADE TO BE IN PLACE WHEN NO WORK IS BEING PERFORMED

NOTE:
 TEMPORARY PAVEMENT SHALL CONSIST OF
 1 3/4" HOT-MIX ASPHALT SURFACE COURSE, MIX. D, N50 (IL 9.5 mm)
 9 3/4" HOT-MIX ASPHALT BASE COURSE (HMA BINDER IL 19 mm)

REVISIONS	
NAME	DATE

ILLINOIS DEPARTMENT OF TRANSPORTATION
SUGGESTED STAGING AND TRAFFIC CONTROL PLAN
STAGE II
 SCALE: VERT. 1"=50'
 HORIZ. DATE 8/10/2007
 DRAWN BY
 CHECKED BY