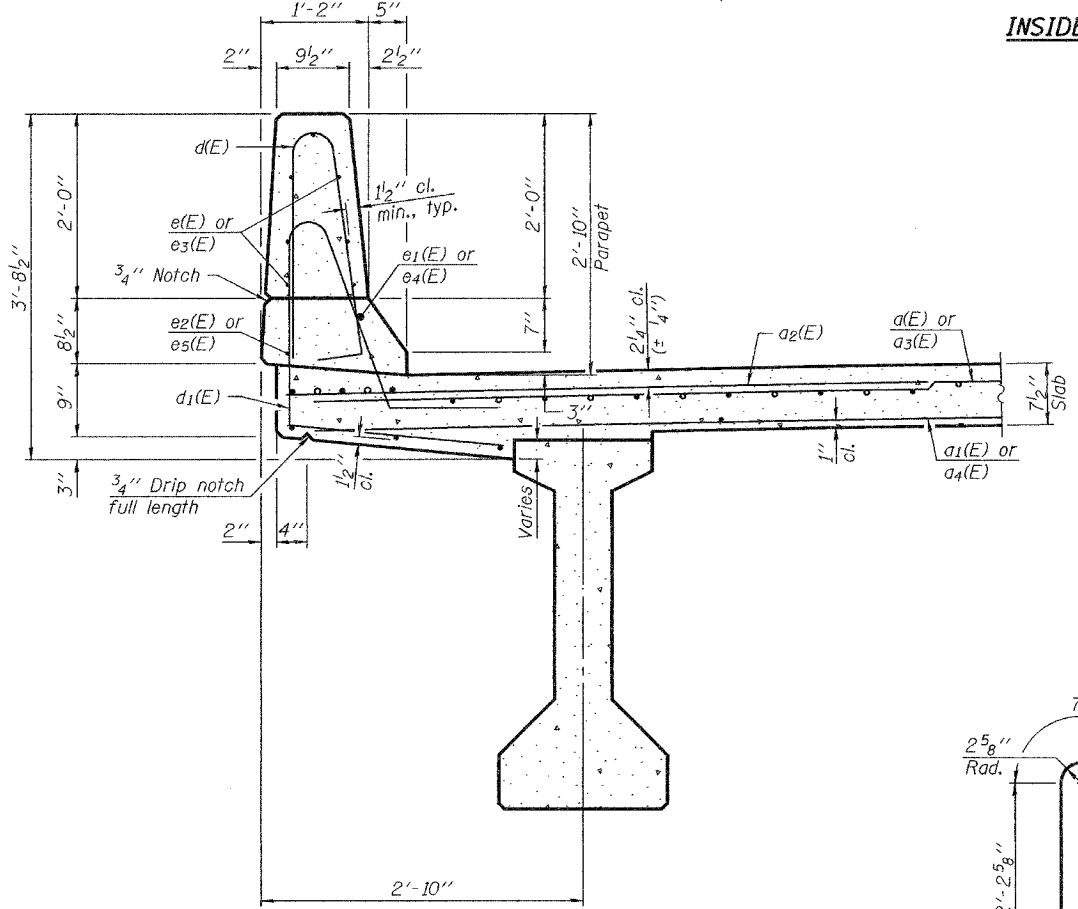
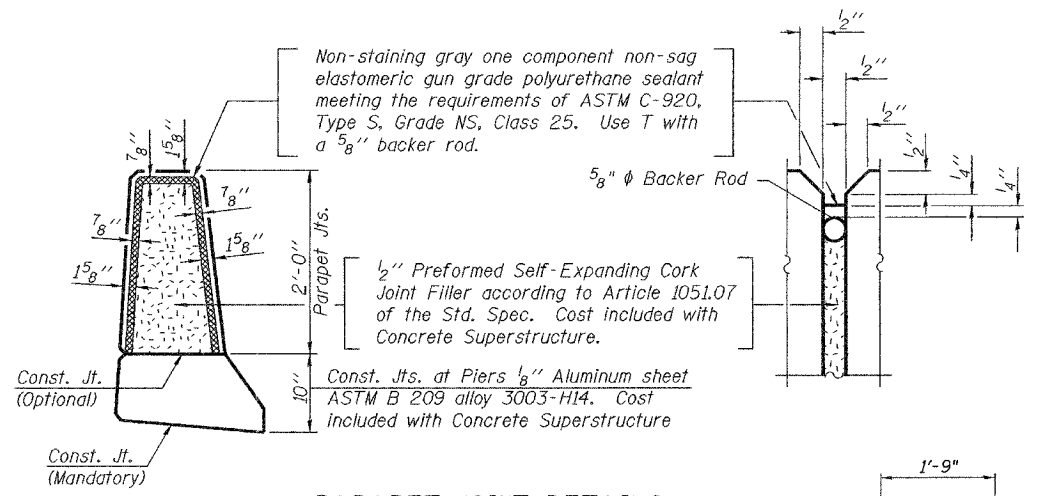


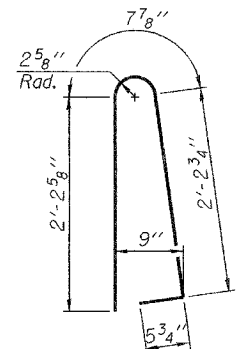
INSIDE ELEVATION OF PARAPET



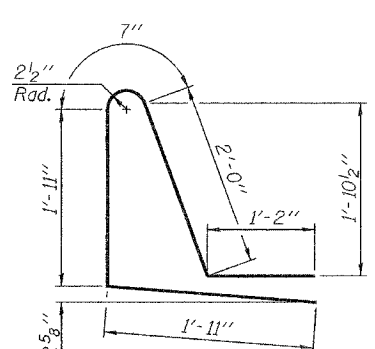
SECTION THRU PARAPET



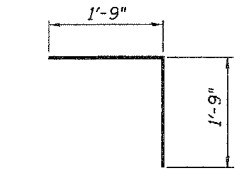
PARAPET JOINT DETAILS



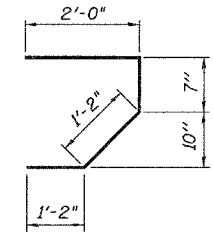
BAR d(E)



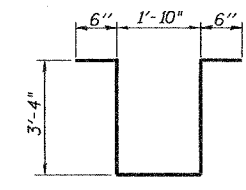
BAR d1(E)



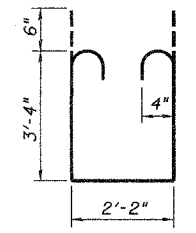
BAR v(E)



BAR s(E)



BAR s2(E)



BAR s1(E)

**SUPERSTRUCTURE
BILL OF MATERIAL**

Bar	No.	Size	Length	Shape
a(E)	218	#5	18'-7"	—
a1(E)	154	#5	18'-3"	—
a2(E)	218	#6	6'-0"	—
a3(E)	218	#5	23'-0"	—
a4(E)	154	#5	23'-3"	—
b(E)	188	#5	28'-4"	—
b1(E)	205	#5	23'-0"	—
b2(E)	86	#6	15'-7"	—
d(E)	240	#5	5'-7"	—
d1(E)	240	#5	7'-7"	—
e(E)	56	#4	15'-4"	—
e1(E)	4	#8	31'-0"	—
e2(E)	4	#4	31'-0"	—
e3(E)	42	#4	15'-0"	—
e4(E)	4	#8	24'-7"	—
e5(E)	4	#4	23'-8"	—
m(E)	10	#6	18'-10"	—
m1(E)	4	#6	1'-9"	—
m2(E)	24	#6	5'-8"	—
m3(E)	6	#6	5'-4"	—
m4(E)	10	#6	23'-9"	—
m5(E)	8	#4	5'-8"	—
m6(E)	12	#8	5'-6"	—
m7(E)	32	#4	6'-8"	—
m8(E)	8	#4	2'-8"	—
m9(E)	8	#6	10'-3"	—
m10(E)	8	#6	8'-0"	—
m11(E)	4	#6	7'-11"	—
m12(E)	4	#6	11'-5"	—
s(E)	82	#5	4'-11"	—
s1(E)	82	#4	9'-10"	—
s2(E)	70	#4	9'-6"	—
v(E)	82	#5	3'-6"	—
Reinforcement Bars, Epoxy Coated	Lbs.		39040	
Concrete Superstructure	Cu. Yds.		180.3	
Anchor Bolts, 1 1/2" φ	Each		8	

Note:
Bars indicated thus 1x2-#4 etc. indicates 1 line of bars with 2 lengths per line.

MINIMUM BAR LAPS

#4 bars = 1'-4"
#8 bars = 3'-5"

COLLINS ENGINEERS
123 N. WACKER DR., SUITE 300
CHICAGO, IL 60606
(312) 704-9300
ILLINOIS PROFESSIONAL DESIGN FIRM
LICENSE NO. 184-000993

REVISIONS	
NAME	DATE

ILLINOIS DEPARTMENT OF TRANSPORTATION
US ROUTE 52 (STATE STREET)
OVER PRAIRIE CREEK
FAP RTE. 852 SEC. 18B-5-R
WILL COUNTY
STA. 1008+00.00 STRUCTURE NO. 099-4643
SUPERSTRUCTURE DETAILS-IV
DRAWN BY: KAC
CHECKED BY: JMH/DGS
DATE: OCTOBER, 2004