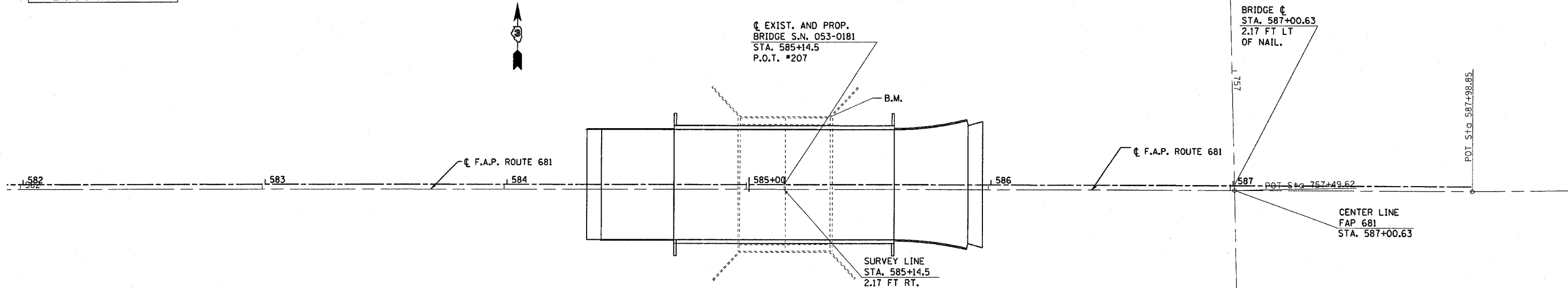
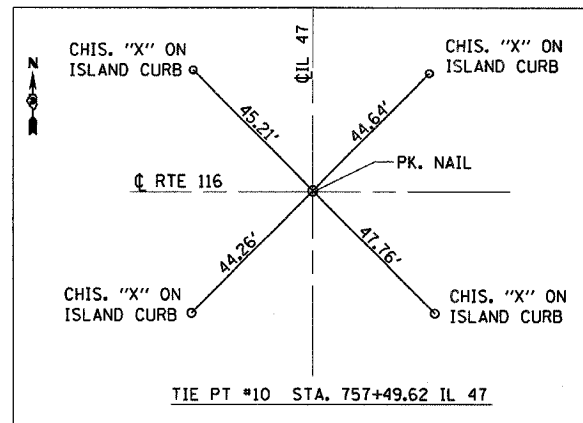
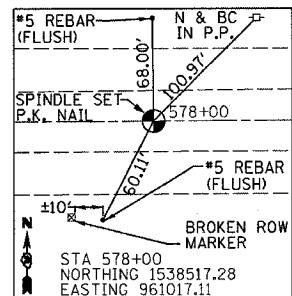
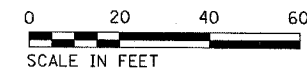
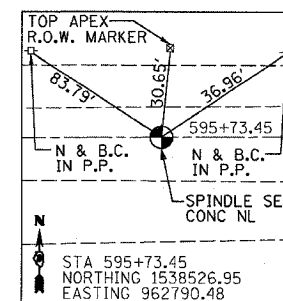
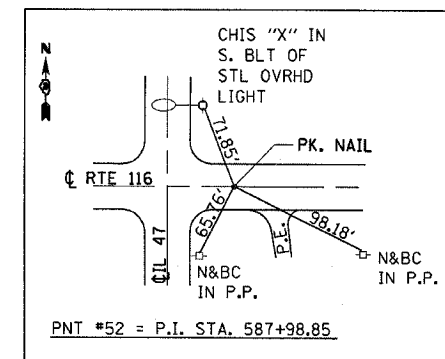
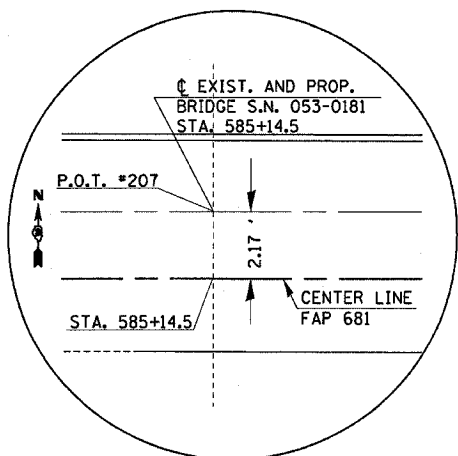


F.A. RTE.	SECTION	COUNTY	TOTAL SHEETS	SHEET NO.
681	114 BR	LIVINGSTON	43	8
STA.		TO STA.		
FED. ROAD DIST. NO.		ILLINOIS FED. AID PROJECT		

BENCHMARK:
U.S.G.S. BRASS DISK
TOP OF NORTHEAST WINGWALL
28.50' LT ELEVATION = 677.70



BM - RR SPIKE IN POWER
POLE IN NW QUAD
STA. 586+18, 148' LT.
ELEVATION = 673.54



REVISIONS	
NAME	DATE

ILLINOIS DEPARTMENT OF TRANSPORTATION

ALIGNMENT SHEET

SCALE: VERT. _____
HORIZ. _____
DATE _____ DRAWN BY _____
CHECKED BY _____