

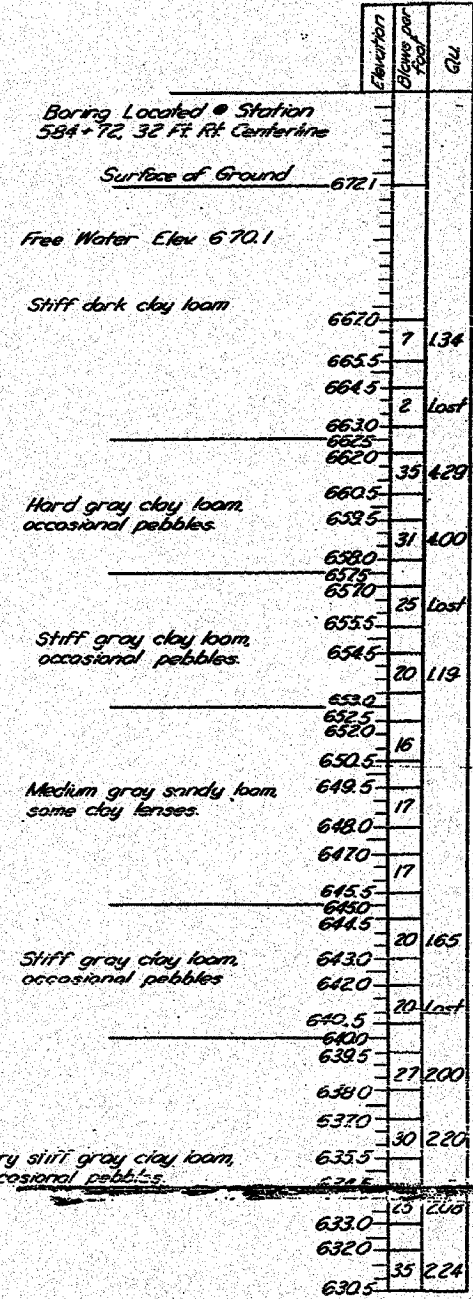
F.A. RTE.	SECTION	COUNTY	TOTAL SHEETS	SHEET NO.
681	114 BR	LIVINGSTON	43	35
STA.	TO STA.			
FED. ROAD DIST. NO.	ILLINOIS	FED. AID PROJECT		

STATE OF ILLINOIS
DEPARTMENT OF PUBLIC WORKS & BUILDINGS
DIVISION OF HIGHWAYS

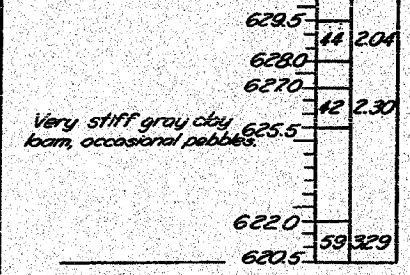
DATE	NO.	BY	NO.	BY
11/16/57	66	J.A.P.	73	J.A.P.

SHEET NO. 4
4 SHEETS

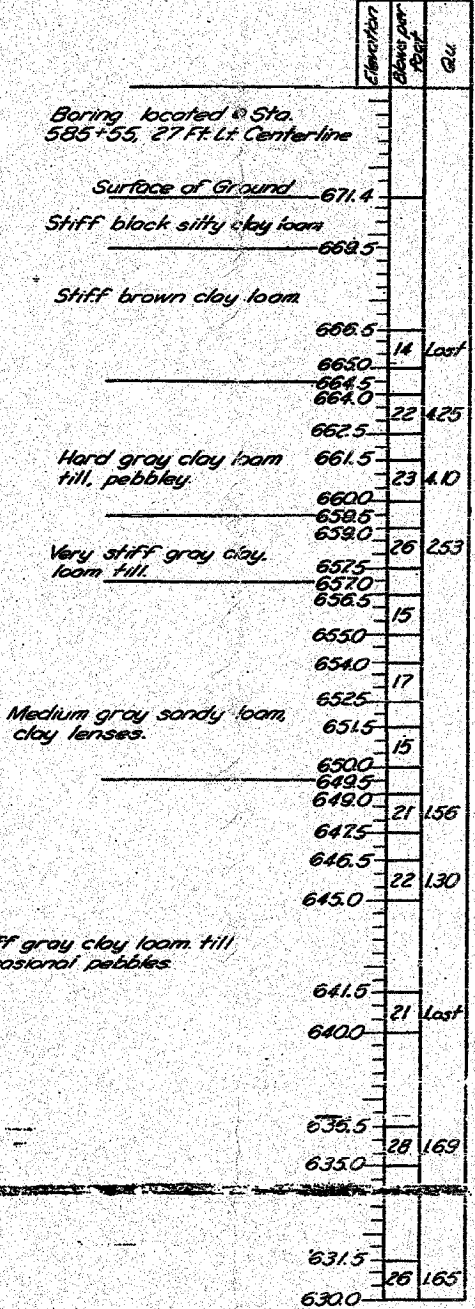
BORING NO 1



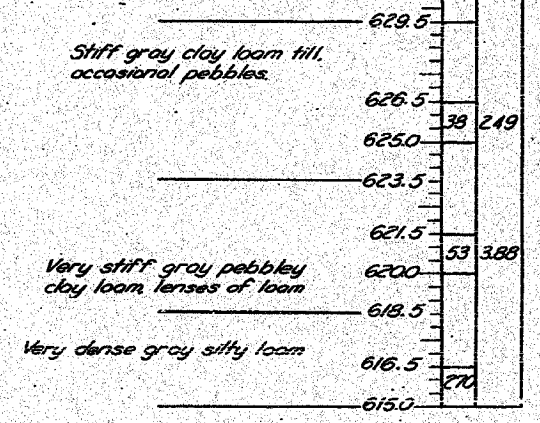
Boring No 1 Cont.



BORING NO 2



Boring No 2 Cont.



Blows per foot of penetration of
Sampling spoon. Hammer Weight - 350 Lbs.
Drop - 12 inches.
Qu - Unconfined compressive strength
in tons per square foot.

DESIGNED *J.A.P.*
CHECKED *Charles R. ...*
DRAWN *J.A. Putnam*
CHECKED *G.F.X.*

NOV. 2 1957
EXAMINED *...*
PASSED *...*
APPROVED *...*

BORING DATA
S. B. I. RT. 116 SEC. 114 BR
LIVINGSTON COUNTY
STATION 585 + 14.5

PLOT DATE = Aug 24, 2007 - 11:16:37 AM
FILE NAME = c:\projects\vgd4183\topo.dgn
PLOT SCALE = 1" = 20.0000' / 1" = 20.0000'
USER NAME = rjgibson