

STATE OF ILLINOIS
DEPARTMENT OF TRANSPORTATION
DIVISION OF HIGHWAYS

F.A.U. RTE.	SECTION	COUNTY	TOTAL SHEETS	SHEET NO.
350	06-00085-00-LT	COOK	10	1
STA.		TO STA.		
FED. ROAD DIST. NO.		ILLINOIS	FED. AID PROJECT	
C-91-032-07			TE-00D1(707)	

CONTRACT NO. 83962

FOR INDEX OF SHEETS, SEE SHEET NO. 2
 FOR INDEX OF HIGHWAY STANDARDS SEE SHEET NO. 2

PROJECT LOCATED IN
 THE CITY OF OAK FOREST

**PLANS FOR PROPOSED
 FEDERAL AID PROJECT
 FAP 350 CICERO AVENUE
 155TH STREET TO 159TH STREET
 STREET LIGHTING**

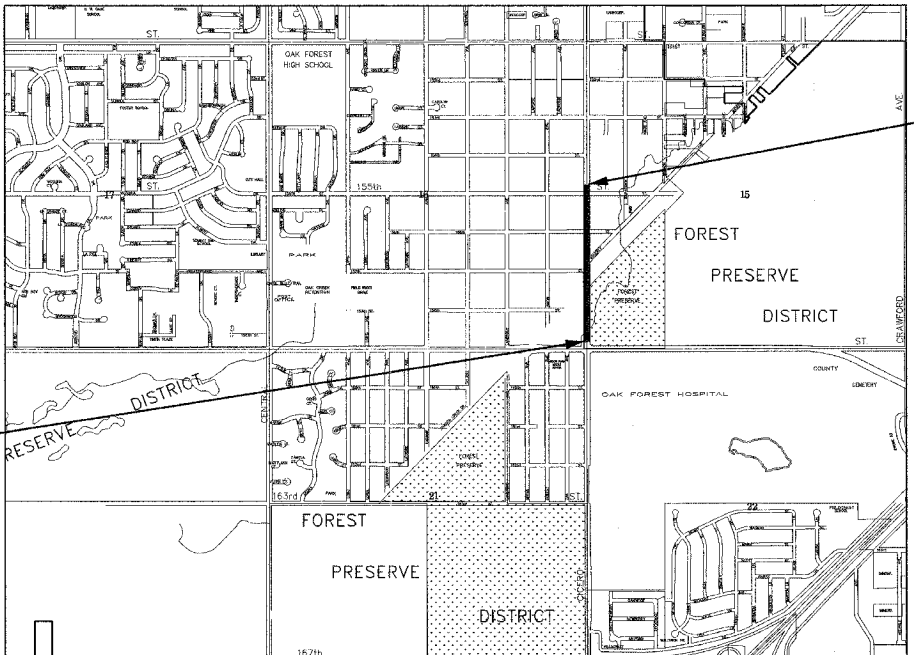
PROJECT NO.: TE-00D1(707)
 SECTION: 06-00085-00-LT
 COOK COUNTY
 JOB NO.: C-91-032-07



TRAFFIC DATA
 POSTED & DESIGN SPEED LIMIT = 40 MPH
 2006 ADT = N/A

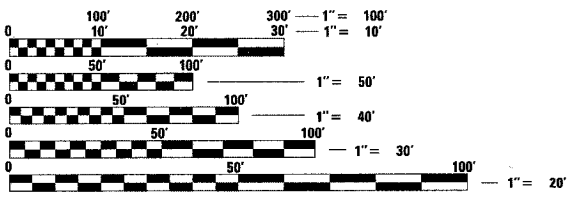
BAXTER & WOODMAN, INC.
 STATE OF ILLINOIS - PROFESSIONAL DESIGN FIRM
 LICENSE NO. - 184-001121 - EXPIRES 4/30/2009

DESIGN DESIGNATION
 COLLECTOR



LOCATION: FAP 350 CICERO AVENUE
 END STREET LIGHTING
 STA 91+25

LOCATION: FAP 350 CICERO AVENUE
 BEGINS STREET LIGHTING
 STA 65+00



FULL SIZE PLANS HAVE BEEN PREPARED USING STANDARD
 ENGINEERING SCALES. REDUCED SIZED PLANS WILL NOT
 CONFORM TO STANDARD SCALES. IN MAKING MEASUREMENTS
 ON REDUCED PLANS, THE ABOVE SCALES MAY BE USED.

J.U.L.I.E.
 JOINT UTILITY LOCATION INFORMATION FOR EXCAVATION
 1-800-892-0123

GROSS LENGTH OF IMPROVEMENT = 2610 LIN. FT. OR 0.49 MILES
 NET LENGTH OF IMPROVEMENTS = 2610 LIN. FT. OR 0.49 MILES



Baxter & Woodman

Burlington, Wisconsin Crystal Lake, Illinois DeKalb, Illinois Itasca, Illinois Mokena, Illinois Grayslake, Illinois (Plainfield, Illinois)

262.763.7834 815.459.1260 815.787.3111 630.773.1870 708.478.2090 847.223.5088 815.489.1551 815.609.7425

(OFFICE WHICH PREPARED PLANS)

John T. Beem
 52-03334
 REGISTERED PROFESSIONAL ENGINEER
 LICENSE EXPIRES 11-30-07
 ELECTRICAL ENGINEER

Todd Hoffman
 62-058724
 REGISTERED PROFESSIONAL ENGINEER
 LICENSE EXPIRES 11-30-07
 PROJECT MANAGER

STATE OF ILLINOIS
 DEPARTMENT OF TRANSPORTATION
 DIVISION OF HIGHWAYS

APPROVED (DATE) *Sept 19, 2007*
 LOCAL AGENCY REPRESENTATIVE

PASSED (DATE) *SEPTEMBER 19, 2007*
 LOCAL ROADS ENGINEER

RELEASING FOR BID
 BASED ON LIMITED REVIEW (DATE) *Sept. 19, 2007*
 DEPUTY DIRECTOR OF HIGHWAYS, REGION 1 ENGINEER

**PRINTED BY THE AUTHORITY
 OF THE STATE OF ILLINOIS**

1/25/2007 4:44:53 PM I:\work\1100085\app\phase2\060467\plan\cover.dwt
 USER: baxter
 LICENSE NO. 184-001121 EXPIRES 4/30/2009
 I.D.O.T. FEDERAL AID DESIGN ENGINEER: PHILIP MARCYN 847.705.4189 SCHAUMBURG, IL

F.A.P. RTE.	SECTION	COUNTY	TOTAL SHEETS	SHEET NO.
350	06-00085-00-LT	COOK	10	2
STA.		TO STA.		
FED. ROAD DIST. NO. 1		ILLINOIS	FED. AID PROJECT	
C-91-032-07			TE-001 (707)	

CONTRACT NO. 83962

GENERAL NOTES

- ALL CONSTRUCTION SHALL BE DONE IN ACCORDANCE WITH THE DETAILS IN THE PLANS, THE SPECIAL PROVISIONS INCLUDED IN THE CONTRACT DOCUMENTS, AND THE LATEST EDITION OF THE FOLLOWING STATE OF ILLINOIS SPECIFICATIONS: "THE STANDARD SPECIFICATIONS FOR ROAD AND BRIDGE CONSTRUCTION" (REFERRED TO AS THE "STANDARD SPECIFICATIONS"), THE "SUPPLEMENTAL SPECIFICATIONS AND RECURRING SPECIAL PROVISIONS", THE "STANDARD SPECIFICATIONS FOR TRAFFIC CONTROL ITEMS", THE "MANUAL ON UNIFORM TRAFFIC CONTROL DEVICES FOR STREETS AND HIGHWAYS", THE "MANUAL OF TEST PROCEDURES FOR MATERIALS", THE STREET LIGHTING IMPROVEMENTS SHALL BE INSTALLED IN ACCORDANCE WITH AMERICAN NATIONAL STANDARD PRACTICE FOR ROADWAY LIGHTING (ANSI/IES RP8 LATEST EDITION) AND THE NATIONAL ELECTRICAL CODE/NEC, NFPA, 70, LATEST EDITION.
- THE LOCATIONS OF PUBLIC OR PRIVATE UTILITIES SHOWN ON THE PLANS ARE APPROXIMATE AND THE CITY DOES NOT GUARANTEE THEIR ACCURACY. THE CONTRACTOR SHALL HAVE THE RESPECTIVE UTILITY COMPANIES FIELD LOCATE ALL THEIR FACILITIES PRIOR TO BEGINNING CONSTRUCTION. THE CONTRACTOR SHALL ALSO VERIFY THE DEPTHS OF THE EXISTING UTILITIES IF NECESSARY. ANY RELOCATION OR LOWERING OF UTILITIES SHALL BE COORDINATED BY THE CONTRACTOR.
- THE CONTRACTOR SHALL BE RESPONSIBLE FOR THE PROTECTION OF ALL UNDERGROUND OR SURFACE UTILITIES EVEN THOUGH THEY MAY NOT BE SHOWN ON THE PLANS. ANY UTILITY THAT IS DAMAGED DURING CONSTRUCTION SHALL BE REPAIRED OR REPLACED AT THE CONTRACTOR'S EXPENSE TO THE SATISFACTION OF THE ENGINEER OR CITY.
- THE CONTRACTOR SHALL NOTIFY THE CITY PUBLIC WORKS ADMINISTRATOR AT LEAST 48 HOURS IN ADVANCE OF BEGINNING WORK TO OBTAIN CITY UTILITY LOCATIONS AND SHALL COORDINATE ALL CONSTRUCTION OPERATIONS WITH THE ENGINEER.
- MATERIALS RESULTING FROM THE REMOVAL OF PAVEMENT, DRIVEWAYS, CURB AND GUTTER, HOT-MIX ASPHALT SURFACES, ETC. SHALL BE REMOVED AT THE END OF EACH DAY TO AN APPROVED SITE AND MEETING THE APPROVAL OF THE CITY OF OAK FOREST DIRECTOR OF PUBLIC WORKS OR DESIGNATED PROJECT MANAGER. IN THE JUDGMENT OF THE CITY, SHOULD IT BE NECESSARY TO REMOVE SUCH MATERIALS, THE CITY WILL HAVE THE MATERIAL REMOVED AND THE CONTRACTOR WILL BE BILLED (CHARGED) ACCORDINGLY.
- THE CONTRACTOR SHALL PROTECT AND CAREFULLY PRESERVE ALL SECTION OR SUBSECTION MONUMENTS OR PROPERTY OR REFERENCE MARKERS AS APPROVED BY THE CITY OF OAK FOREST DIRECTOR OF PUBLIC WORKS OR DESIGNATED PROJECT MANAGER. UNTIL THE OWNERS, HIS AGENT OR AN AUTHORIZED SURVEYOR HAS WITNESSED OR OTHERWISE REFERENCED THEIR LOCATIONS.
- ACCESS TO PRIVATE DRIVEWAYS SHALL BE PROVIDED AT ALL TIMES EXCEPT DURING ACTUAL CONSTRUCTION ADJACENT THERE TO.
- ANY SIGNS OR MAILBOXES THAT ARE IN CONFLICT WITH THE PROPOSED CONSTRUCTION SHALL BE REMOVED AND REPLACED IN ACCORDANCE WITH CITY STANDARDS AND INCLUDED IN THE PAY ITEM FOR TRAFFIC CONTROL AND PROTECTION. MAIL SERVICE SHALL BE MAINTAINED AT ALL TIMES.
- THE CONTRACTOR SHALL PROVIDE AND INSTALL TWO (2) WEIGHTED SANDBAGS ON EACH TYPE I OR TYPE II BARRICADE USED. ONE (1) WEIGHTED SANDBAG SHALL BE PLACED ACROSS EACH BOTTOM RAIL.
- ALL POSTS, RAILROAD TIES, DECORATIVE TIMBER AND BRICK WORK IN CONFLICT WITH THE PROPOSED IMPROVEMENTS SHALL BE REMOVED AND RELOCATED AS DETERMINED BY THE ENGINEER AT THE TIME OF CONSTRUCTION. EVERY EFFORT SHALL BE MADE BY THE CONTRACTOR WHEN REMOVING THESE ITEMS TO PRESERVE THEM FROM HARM. ITEMS NOT RELOCATED SHALL BE PROPERLY DISPOSED OF BY THE CONTRACTOR. THIS WORK SHALL BE REMOVED OR RELOCATED BY THE CONTRACTOR AT NO ADDITIONAL COST.
- PRIOR TO CONSTRUCTION OF ANY PROPOSED UTILITIES, THE CONTRACTOR SHALL EXCAVATE AND LOCATE THE EXISTING UTILITIES TO VERIFY THEIR LOCATION, SIZE, AND DEPTH TO INSURE THAT GRADE CONFLICTS WILL NOT OCCUR. THE COST OF THIS EXPLORATION SHALL BE INCLUDED IN THE COST OF THE PROPOSED UTILITY CONSTRUCTION.
- THE CONTRACTOR SHALL PROVIDE WARRANTIES OR GUARANTEES PROVIDING FOR SATISFACTORY IN-SERVICE OPERATION OF THE MECHANICAL AND ELECTRICAL EQUIPMENT AND RELATED COMPONENTS AS PER I.D.O.T. STANDARDS.
- ALL AREAS DAMAGED OR DISTURBED BY THE INSTALLATION OF LIGHT POLES, FOUNDATIONS, UNDERGROUND CABLES, CONDUIT, AND CONTROL CABINET SHALL HAVE TOPSOIL REPLACED TO A DEPTH OF 4", FERTILIZED, AND HYDROSEED IN ACCORDANCE WITH APPLICABLE SECTION OF THE "STANDARD SPECIFICATIONS". THE WORK SHALL BE REPAIRED OR REPLACED BY THE CONTRACTOR AT NO ADDITIONAL COST, AND MEETING THE APPROVAL OF THE CITY OF OAK FOREST DIRECTOR OF PUBLIC WORKS OR DESIGNATED PROJECT MANAGER.
- ANY DAMAGE TO PAVEMENT, SIDEWALK, CURB, OR ANY OTHER PORTION OF THE ROADWAY NOT SPECIFICALLY TO BE REMOVED AND REPLACED SHALL BE REPAIRED OR REPLACED BY THE CONTRACTOR AT NO ADDITIONAL COST AND REPLACEMENT SHALL MEET THE APPROVAL OF THE CITY OF OAK FOREST DIRECTOR OF PUBLIC WORKS OR DESIGNATED PROJECT MANAGER.
- THE CONTRACTOR SHALL MAKE SPECIAL NOTE OF THE REQUIREMENTS FOR GROUNDING. GROUNDING CONNECTIONS AT THE FOUNDATION SHALL BE EXOTHERMICALLY WELDED, AS SPECIFIED, AND SHALL BE INSPECTED AND APPROVED BY THE ENGINEER PRIOR TO POURING CONCRETE OR BACKFILLING, AS APPLICABLE.
- THE CONTRACTOR SHALL MAKE SPECIAL NOTE OF THE REQUIREMENT FOR BURIED WARNING TAPE, SPECIFIED AS PART OF "TRENCH AND BACKFILL FOR ELECTRICAL WORK". THE INSTALLATION OF THE TAPE SHALL BE INSPECTED AND APPROVED BY THE ENGINEER PRIOR TO BACKFILLING OR DURING PLOWING OPERATIONS, AS APPLICABLE.
- THE CONTRACTOR SHALL BE RESPONSIBLE FOR THE ESTABLISHMENT OF FINISHED GRADE. THE ENGINEER MAY ASSIST THE CONTRACTOR, AS APPLICABLE, BUT THE RESPONSIBILITY FOR COORDINATING THE FINISHED GRADE ELEVATION WITH THE TOP OF FOUNDATION HEIGHTS AND THE LIGHT SHALL REMAIN WITH THE CONTRACTOR.
- NO POLES SHALL BE ERECTED UNTIL THE RESPECTIVE FOUNDATIONS HAVE CURED, AS APPROVED BY THE ENGINEER.
- ALL CONDUITS UNDER ROADWAYS AND DRIVEWAYS SHALL BE PUSHED. CONDUIT LENGTHS SHOWN ON THE PLANS ARE APPROXIMATE. THE CONTRACTOR SHALL VERIFY THE ACTUAL DISTANCE REQUIREMENTS IN THE FIELD.
- THE CONTRACTOR SHALL MAKE SPECIAL NOTE OF THE REQUIREMENTS FOR WIRE MARKERS AND SHALL TAG ALL WIRE MARKERS AND SHALL TAG ALL WIRING ACCORDINGLY.
- THE CITY OF OAK FOREST AND ENGINEER SHALL BE NOTIFIED 48 HOURS PRIOR TO COMMENCING EACH CONSTRUCTION PHASE.
- THE CONTRACTOR WILL BE REIMBURSED BY THIS CONTRACT TO THE EXACT AMOUNT OF MONEY AS BILLED BY COM-ED FOR THEIR SERVICES, AND NO EXTRA COMPENSATION SHALL BE PAID TO THE CONTRACTOR FOR ANY INCIDENTAL MATERIALS AND LABOR REQUIRED TO FULFILL THE REQUIREMENTS AS SHOWN ON THE PLANS AND SPECIFIED HEREIN. SEE SECTION 109.05 "STANDARD SPECIFICATIONS FOR ROAD AND BRIDGE CONSTRUCTION".
- ALL ELECTRICAL DEVICES AND MATERIALS SHALL BE U/L LISTED WHERE APPLICABLE.
- CONTRACTOR IS RESPONSIBLE FOR DECOMMISSIONING AND SALVAGING EXISTING LIGHTING PER DIRECTIONS OF THESE PLANS AND SHALL BE REMOVED IN A PROFESSIONAL WORKMANSHIP LIKE MANNER FOR RE-USE BY THE CITY OF OAK FOREST. THE LIGHTING UNITS SHALL BE REMOVED AS FOLLOWS:
 - POLES TO BE TAKEN DOWN WITH ARMS AND LUMINAIRES DIS-MOUNTED (PROTECT LENSES FROM BREAKAGE).
 - ALL MOUNTING BOLTS, BACK PLATES, COVERS, ABOVE GROUND POLE, TRANSFORMER BASES, ETC. TO BE COLLECTED AND BOXED.
 - COORDINATE SALVAGE WORK WITH CITY AND DELIVER ALL SALVAGED LIGHT POLE AND RELATED ITEMS TO:

OAK FOREST PUBLIC WORKS
15722 S. LOREL AVE.
OAK FOREST, IL 60452
(708)535-4090
- CONTACT JULIE AT 1-800-892-0123 FOR UTILITY LOCATES PRIOR TO BEGINNING AND EXCAVATION WORK. WORK PROACTIVELY WITH UTILITY COMPANIES FOR THE PURPOSE OF DAMAGE PREVENTION.

THE CONTRACTOR SHALL CONTACT:
COM-ED
25000 S. GOVERNORS HIGHWAY
UNIVERSITY PARK, IL 60466
JIM WERNER
(708) 235-2694

INDEX OF SHEETS

SHEET NO.	TITLE
1	COVER SHEET
2	INDEX OF SHEETS, HIGHWAY STANDARDS AND GENERAL NOTES
3	LIGHTING PLAN-SINGLE LINE DIAGRAM
4-6	STREET LIGHTING PLAN
7-8	STREET LIGHTING DETAILS
9	BM-14 METHOD OF FLAGGING
10	TC-10 TRAFFIC CONTROL AND PROTECTION FOR SIDE ROADS, INTERSECTIONS, AND DRIVEWAYS

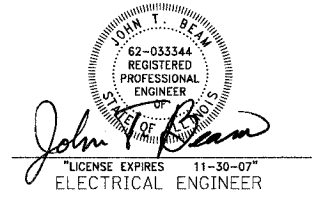
SUMMARY OF QUANTITIES

4031-1F

ITEM NO.	DESCRIPTION	UNIT	QUANTITY
67100100	Mobilization	L. SUM	1
70101700	Traffic Control and Protection	L. SUM	1
80400100	Electrical Service Installation	EACH	1
80400200	Electrical Utility Service Connection	L. SUM	1
81018500	Conduit Pushed, 2" Dia., Galvanized Steel	FOOT	150
81018600	Conduit Pushed, 2 1/2" Dia., Galvanized Steel	FOOT	1800
81100600	Conduit Attached To Structure, 2" DIA., Galvanized Steel	FOOT	50
XX007096	Unit Duct 7-1/c No.6 & 1/c No.8 Ground, 600 V (XLP-Type USE) 1 1/2" Dia. Polyethylene	FOOT	5000
81702440	Electrical Cable In Conduit, 600 V. (XLP-Type USE) 3-1/c No. 1/0	FOOT	70
XX007097	Electrical Cable In Conduit, 600 V. (XLP-Type USE) 3-1/c No. 10	FOOT	160
81900200	Trench & Backfill for Electrical Work	FOOT	2500
XX007098	Luminaire, Sodium Vapor, Horizontal Mount 70 Watt, Special	EACH	25
82102310	Luminaire, Sodium Vapor, Horizontal Mount 310 Watt	EACH	19
82103310	Luminaire, Sodium Vapor, Horizontal Mount Photo-Cell Control, 310 Watt	EACH	1
XX007099	Light Pole, Aluminum, 15 FT. M.H. 2 FT. Arm, Special	EACH	25
XX007095	Light Pole, Steel, 40 FT. M.H. 15 FT. Arm, Special	EACH	20
82500505	Lighting Controller, Special	EACH	1
83600210	Light Pole Foundation, 24" Dia.	FOOT	150
83600310	Light Pole Foundation, 30" Dia.	FOOT	160
84200500	Removal of Existing Lighting Unit, Salvage	EACH	37
84200700	Lighting Foundation Removal	EACH	38

HIGHWAY STANDARDS

000001-04	STANDARD SYMBOLS, ABBREVIATIONS, AND PATTERNS
424001-04	CURB RAMPS FOR SIDEWALKS
701101-01	OFF RD OPERATIONS, MULTILANE 15' TO 24" FROM PAVEMENT EDGE
701501-03	URBAN LANE CLOSURE, 2L 2W-UNDIVIDED
701606-04	URBAN LANE CLOSURE, MULTILANE, 2W WITH MOUNTABLE MEDIAN
701701-04	URBAN LANE CLOSURE, MULTILANE INTERSECTION
701801-03	LANE CLOSURE MULTILINE 1W OR 2W CROSSWALK OR SIDEWALK CLOSURE
702001-06	TRAFFIC CONTROL DEVICES
805001	ELECTRIC SERVICE INSTRUCTION DETAILS



COPYRIGHT © 2007 BY BAXTER & WOODMAN, INC.
 ALL RIGHTS RESERVED. EXPIRES 4/30/2009
 LICENSE NO. 184-000217 EXPIRES 4/30/2009
 9/17/2007 4:52:58 PM

CONSULTANTS	REV. NO.	DATE	DESCRIPTION
* REFER TO EQUIPMENT MANUFACTURER'S SHOP DRAWINGS			
DRAWING FILE: #FILEA#			

BAXTER & WOODMAN
Consulting Engineers

Baxter & Woodman
Crystal Lake, Illinois 815.469.1860
Hanson, Illinois 815.773.1870
Burlington, Wisconsin 262.763.7834
Mokena, Illinois 708.478.2090
DeKalb, Illinois 815.787.3111
Grenoble, Illinois 847.323.5088
Rockford, Illinois 815.489.1551
Plainfield, Illinois 815.609.7425

CITY OF OAK FOREST, ILLINOIS
FAP 350 CICERO AVENUE IMPROVEMENTS
(155TH ST. TO 159TH ST.)

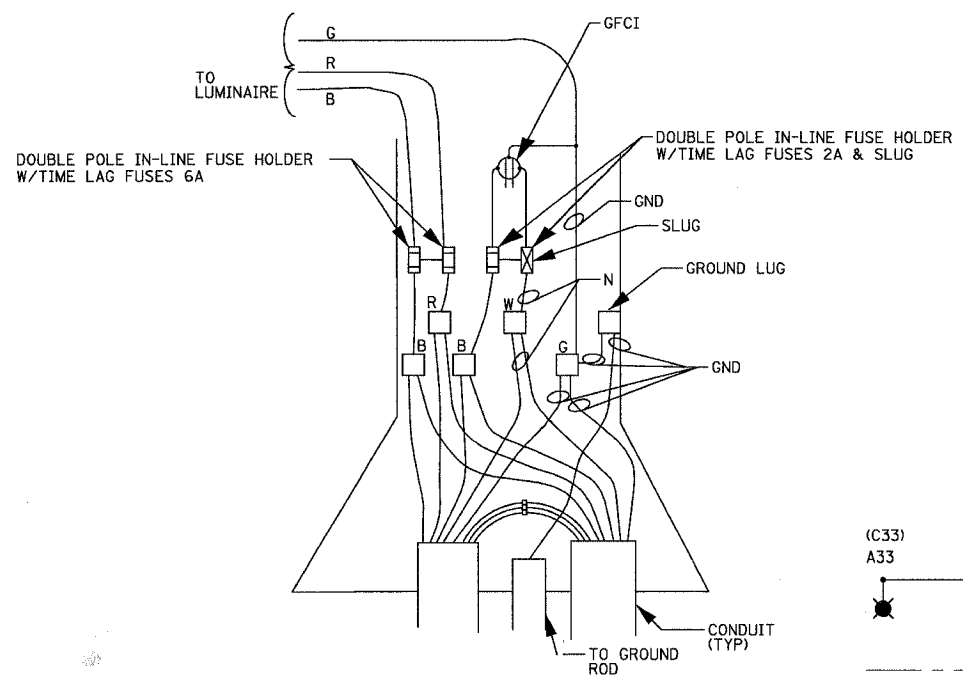
INDEX OF SHEETS, HIGHWAY STANDARDS AND GENERAL NOTES

DESIGNED BY	SCALE
JLR	NONE
DRAWN BY	PROJECT NO.
MAC	060467
CHECKED BY	SHEET NO.
JTB	2 OF 10
DATE	
06/21/07	

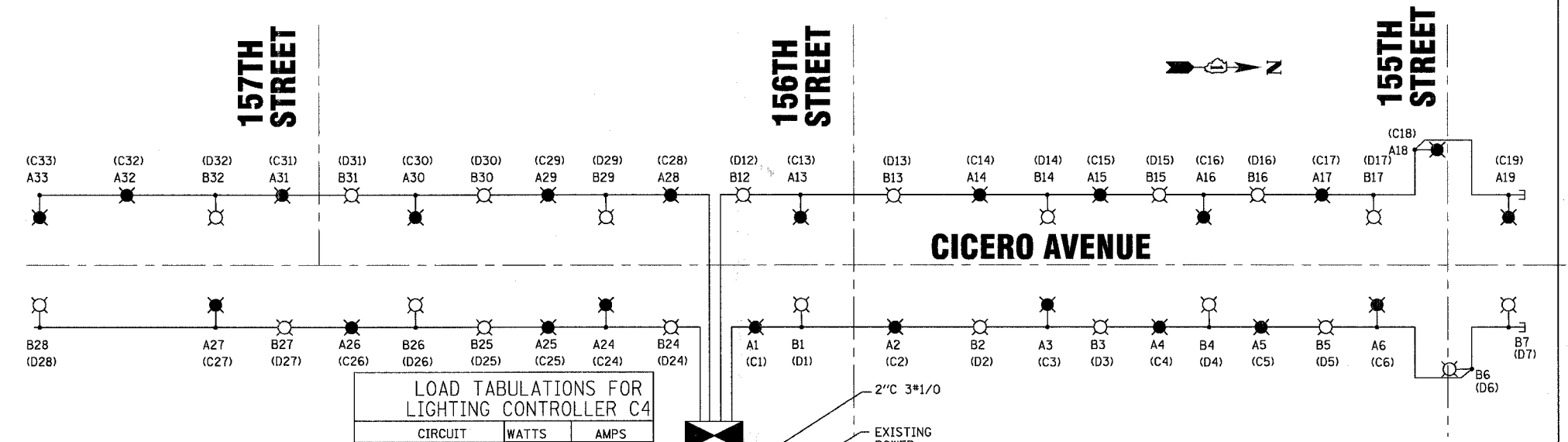
CONTRACT NO. 83962

LEGEND

- ⊗ EXISTING LIGHTING UNIT TO REMAIN
- ⊗ A33 (C33) PROPOSED STREET LIGHT "ON CIRCUIT A" & FESTOON "ON CIRCUIT C" 40' MOUNTING HEIGHT, 310 WATT HPS, 240V W/15' ARM
- ⊗ B13 (D13) PROPOSED STREET LIGHT "ON CIRCUIT B" & FESTOON "ON CIRCUIT D" 40' MOUNTING HEIGHT, 310 WATT HPS, 240V W/15' ARM
- ⊗ A12 (C12) PROPOSED STREET LIGHT "ON CIRCUIT A" & FESTOON "ON CIRCUIT C" 15' MOUNTING HEIGHT, 70 WATT HPS, 240V W/2' ARM
- ⊗ B11 (D11) PROPOSED STREET LIGHT "ON CIRCUIT B" & FESTOON "ON CIRCUIT D" 15' MOUNTING HEIGHT, 70 WATT HPS, 240V W/2' ARM
- EXISTING COM ED SERVICE POLE
- PROPOSED NEW COM-ED POLE
- ⊗ PROPOSED LIGHTING CONTROLLER
- ⊗ EXISTING LIGHTING CONTROLLER
- EX - EXISTING STREET LIGHTING WIRING TO REMAIN



TYPICAL POLE WIRING DETAIL FOR ROADWAY AND ORNAMENTAL LIGHT UNITS



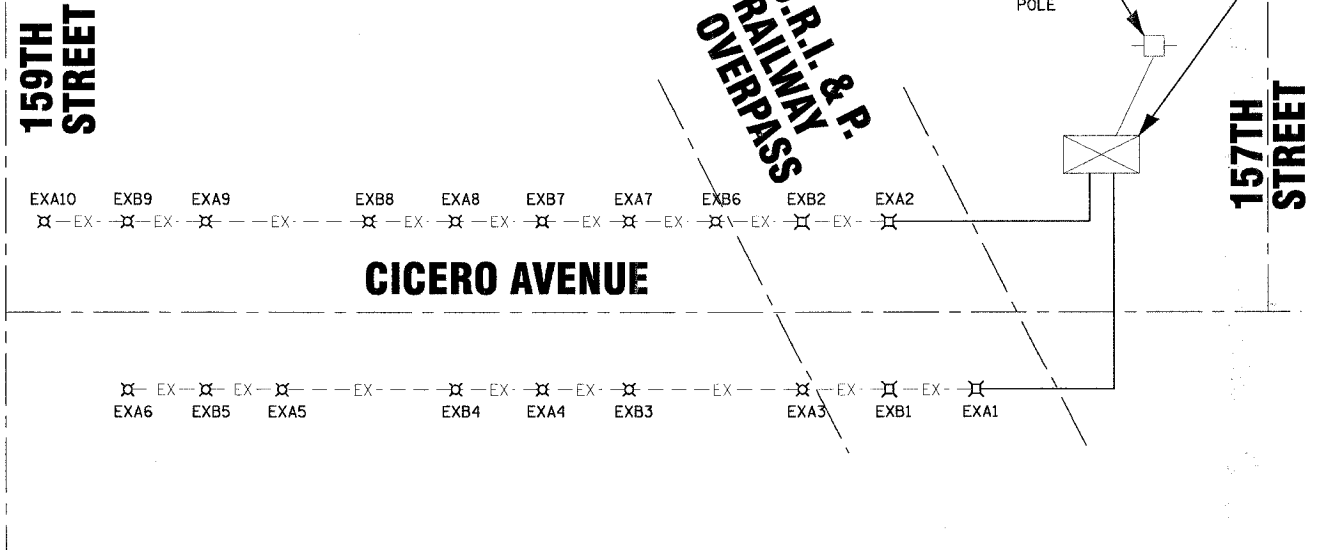
LOAD TABULATIONS FOR LIGHTING CONTROLLER C4

CIRCUIT	WATTS	AMPS
A LIGHTS	4,010	22.20
A LIGHTS (FUTURE)	1,420	7.9
B LIGHTS	3,940	21.80
B LIGHTS (FUTURE)	1,420	7.9
C/D RECEPT.	8,100	34.5
C/D RECEPT. (FUTURE)	3,600	15
TOTAL	16,050	109.3

LOAD TABULATIONS FOR LIGHTING CONTROLLER C3

CIRCUIT	WATTS	AMPS
A LIGHTS	2,500	14.0
B LIGHTS	2,250	12.6
TOTAL	4,750	26.6

JOHN T. BEAM
 62-03344
 REGISTERED PROFESSIONAL ENGINEER OF ILLINOIS
 LICENSE EXPIRES 11-30-07
 ELECTRICAL ENGINEER



- NOTES
- ALL EXISTING STREET LIGHTS TO THE NORTH OF CONTROLLER (C3) ARE TO BE REMOVED WHEN NEW STREET LIGHTS ARE OPERATIONAL, TO BE DECOMMISSIONED BY CONTRACTOR FOR RE-USE BY THE CITY.
 - CONTRACTOR IS RESPONSIBLE FOR DISCONNECTING LIGHTS AT THE EXISTING LIGHTING CONTROLLER AND SALVAGING THE LIGHTS TO THE NORTH FOR RE-USE BY THE CITY, AND THE DEMOLITION AND REMOVAL OF THE OLD POLE FOUNDATIONS.

COPYRIGHT © 2007 BY BAXTER & WOODMAN, INC.
 STATE OF ILLINOIS - PROFESSIONAL DESIGN FIRM
 LICENSE NO. - BR-20027 - EXPIRES 4/30/2009
 9/17/2007 4:52:41 PM
 I:\Users\jbeamer\Documents\2006\83962\83962_03.dwg

CONSULTANTS	REV. NO.	DATE	DESCRIPTION

* REFER TO EQUIPMENT MANUFACTURER'S SHOP DRAWINGS

DRAWING FILE: #FILEA#

BAXTER & WOODMAN
 Consulting Engineers

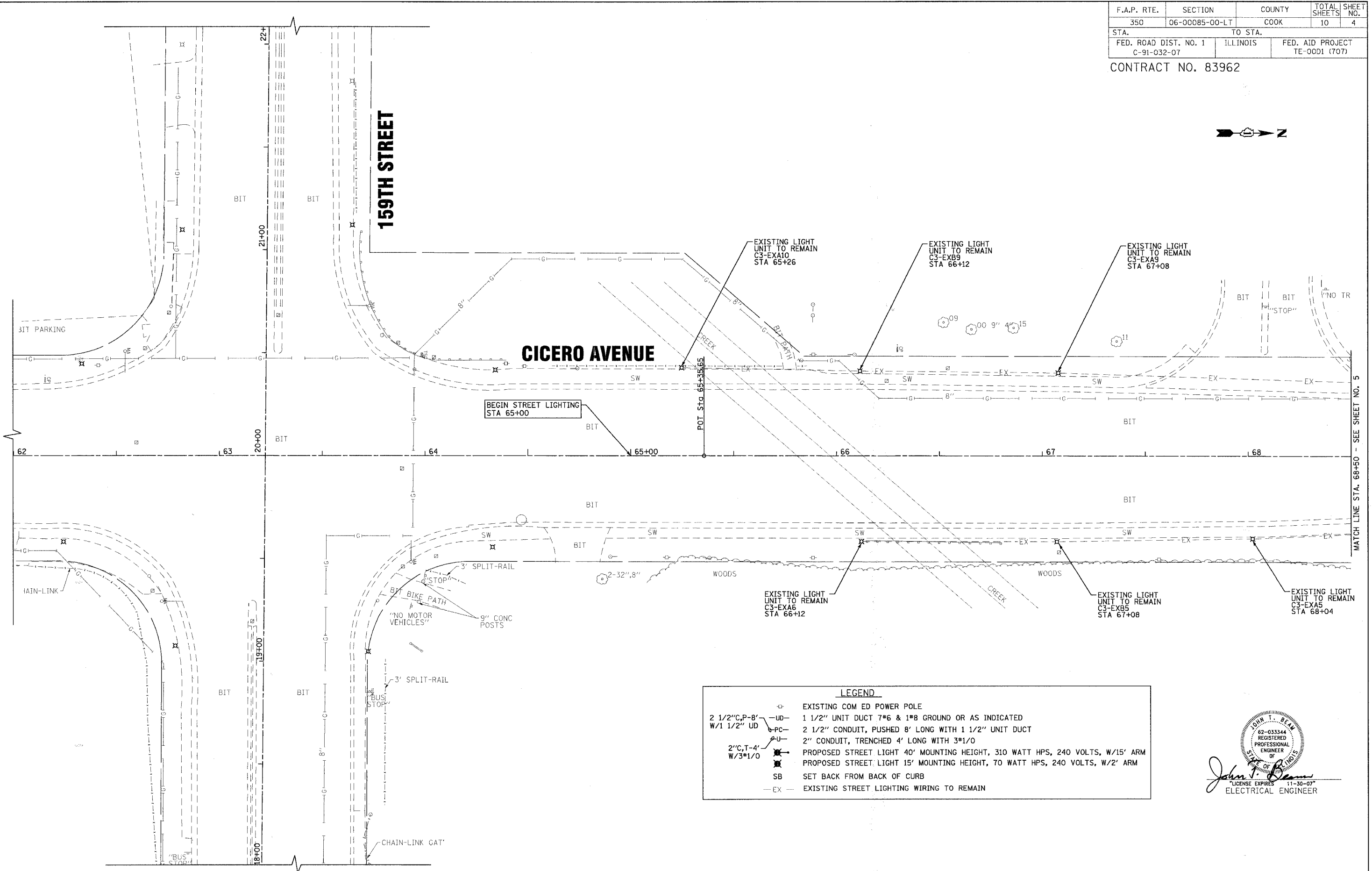
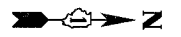
Baxter & Woodman
 Crystal Lake, Illinois 815.409.1280
 Inca, Illinois 815.723.1870
 Burlington, Wisconsin 262.763.7834
 Mokena, Illinois 708.478.3090
 DeKalb, Illinois 815.787.3111
 Graylake, Illinois 815.223.5088
 Rockford, Illinois 815.498.1551
 Plainfield, Illinois 815.609.7425

CITY OF OAK FOREST, ILLINOIS
FAP 350 CICERO AVENUE IMPROVEMENTS
 (155TH ST. TO 159TH ST.)

DESIGNED BY	JLR	SCALE	NONE
DRAWN BY	MAC	PROJECT NO.	060467
CHECKED BY	JTB	SHEET NO.	
DATE	06/21/07		3 OF 10

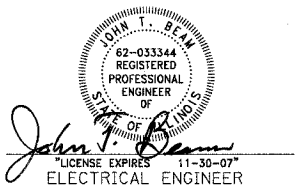
F.A.P. RTE.	SECTION	COUNTY	TOTAL SHEETS	SHEET NO.
350	06-00085-00-LT	COOK	10	4
STA.		TO STA.		
FED. ROAD DIST. NO. 1		ILLINOIS	FED. AID PROJECT	
C-91-032-07			TE-0001 (707)	

CONTRACT NO. 83962



LEGEND

⊕	EXISTING COM ED POWER POLE
—UD—	1 1/2" UNIT DUCT 7*6 & 1*8 GROUND OR AS INDICATED
—PC—	2 1/2" CONDUIT, PUSHED 8' LONG WITH 1 1/2" UNIT DUCT
—U—	2" CONDUIT, TRENCHED 4' LONG WITH 3*1/0
⊙	PROPOSED STREET LIGHT 40' MOUNTING HEIGHT, 310 WATT HPS, 240 VOLTS, W/15' ARM
⊙	PROPOSED STREET LIGHT 15' MOUNTING HEIGHT, 70 WATT HPS, 240 VOLTS, W/2' ARM
SB	SET BACK FROM BACK OF CURB
—EX—	EXISTING STREET LIGHTING WIRING TO REMAIN



COPYRIGHT © 2007 BY BAXTER & WOODMAN, INC.
 STATE OF ILLINOIS - PROFESSIONAL DESIGN FIRM
 2630 N. WILSON AVENUE, SUITE 100, OAK FOREST, ILLINOIS 60451
 TEL: 815.469.1200 FAX: 815.469.1201 WWW.BAXTERANDWOODMAN.COM

CONSULTANTS	REV. NO.	DATE	DESCRIPTION
* REFER TO EQUIPMENT MANUFACTURER'S SHOP DRAWINGS			
DRAWING FILE: #FILEA#			

BAXTER & WOODMAN
 Consulting Engineers

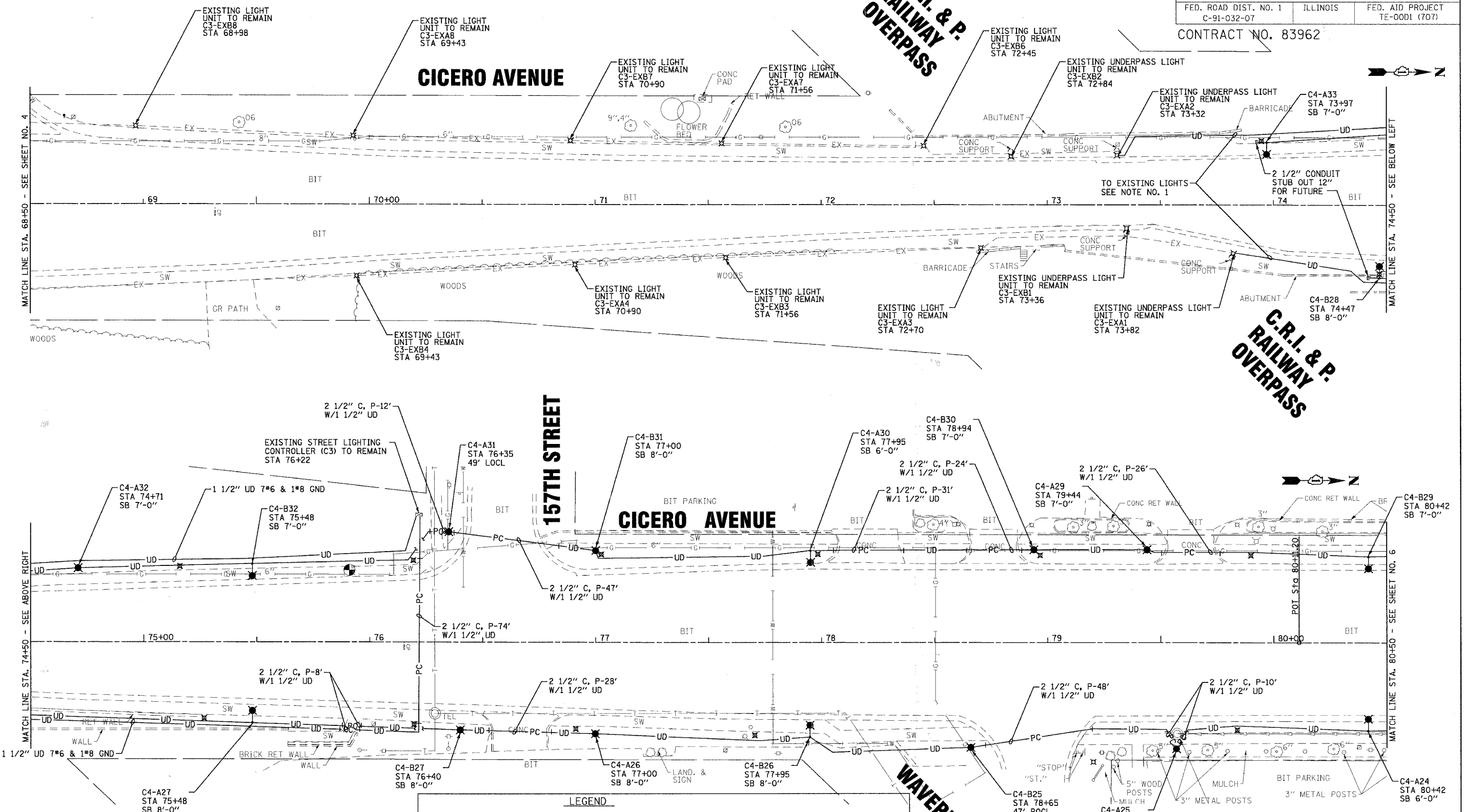
Baxter & Woodman
 Crystal Lake, Illinois 815.469.1200
 Itasca, Illinois 630.770.1870
 Burlington, Wisconsin 262.763.7854
 Mahomet, Illinois 708.478.2020
 DeKalb, Illinois 815.787.3111
 Graylake, Illinois 847.223.8088
 Rockford, Illinois 815.489.1551
 Plainfield, Illinois 815.609.7425

CITY OF OAK FOREST, ILLINOIS
FAP 350 CICERO AVENUE IMPROVEMENTS
 (155TH ST. TO 159TH ST.)

STREET LIGHTING PLAN
CICERO AVENUE
 STA 62+00 TO STA 68+50

DESIGNED BY	JLR	SCALE	1"=20'
DRAWN BY	MAC	PROJECT NO.	060467
CHECKED BY	JTB	SHEET NO.	4 OF 10
DATE	06/21/07		

CONTRACT NO. 83962



NOTES:

ALL AREAS DAMAGED OR DISTURBED BY THE INSTALLATION OF LIGHT POLES, FOUNDATIONS, UNDERGROUND CABLES, CONDUIT, AND CONTROL CABINET SHALL HAVE TOPSOIL REPLACED TO A DEPTH OF 4", FERTILIZED, AND HYDROSEED IN ACCORDANCE WITH APPLICABLE SECTION OF THE "STANDARD SPECIFICATIONS". THE WORK SHALL BE REPAIRED OR REPLACED BY THE CONTRACTOR AT NO ADDITIONAL COST.

ANY DAMAGE TO PAVEMENT, SIDEWALK, CURB, OR ANY OTHER PORTION OF THE ROADWAY NOT SPECIFICALLY TO BE REMOVED AND REPLACED SHALL BE REPAIRED OR REPLACED BY THE CONTRACTOR AT NO ADDITIONAL COST.

LEGEND

- EX — EXISTING STREET LIGHTING WIRING TO REMAIN
- SB SET BACK FROM BACK OF CURB
- EXISTING LIGHTING UNIT REMOVE & SALVAGE
- PROPOSED STREET LIGHT 15' MOUNTING HEIGHT, 70 WATT HPS, 240 VOLTS, W/2' ARM
- PROPOSED STREET LIGHT 40' MOUNTING HEIGHT, 310 WATT HPS, 240 VOLTS, W/15' ARM
- 2" CONDUIT, TRENCHED 4' LONG WITH 3#1/0
- 2 1/2" CONDUIT, PUSHED 8' LONG WITH 1 1/2" UNIT DUCT
- 1 1/2" UNIT DUCT 7*6 & 1*8 GROUND OR AS INDICATED
- 2 1/2" C, P-8' W/1 1/2" UD
- EXISTING COM ED POWER POLE

NOTE:

- RECONNECT EXISTING CIRCUITS FOR UNDERPASS LIGHTING AND STREET LIGHTS ON SOUTH SIDE OF OVERPASS WHICH WILL REMAIN IN SERVICE, TO NEW UNIT DUCT WIRING FROM EXISTING CONTROLLER (C3) AS REQUIRED. SEE DETAIL ON SHEET NO.7
- EXISTING STREET LIGHTING UNITS TO REMAIN IN OPERATION UNTIL NEW STREET LIGHTS ARE OPERATIONAL AND ACCEPTED BY THE CITY.

Professional Engineer Seal for John J. Beam, License Expires 11-30-07, Electrical Engineer.

COPYRIGHT © 2007, BY BAXTER & WOODMAN, INC. ALL RIGHTS RESERVED. THIS DRAWING IS THE PROPERTY OF BAXTER & WOODMAN, INC. AND IS NOT TO BE REPRODUCED OR TRANSMITTED IN ANY FORM OR BY ANY MEANS, ELECTRONIC OR MECHANICAL, INCLUDING PHOTOCOPYING, RECORDING, OR BY ANY INFORMATION STORAGE AND RETRIEVAL SYSTEM, WITHOUT THE WRITTEN PERMISSION OF BAXTER & WOODMAN, INC.

CONSULTANTS	REV. NO.	DATE	DESCRIPTION

* REFER TO EQUIPMENT MANUFACTURER'S SHOP DRAWINGS

DRAWING FILE: #FILEA#

BAXTER & WOODMAN
Consulting Engineers

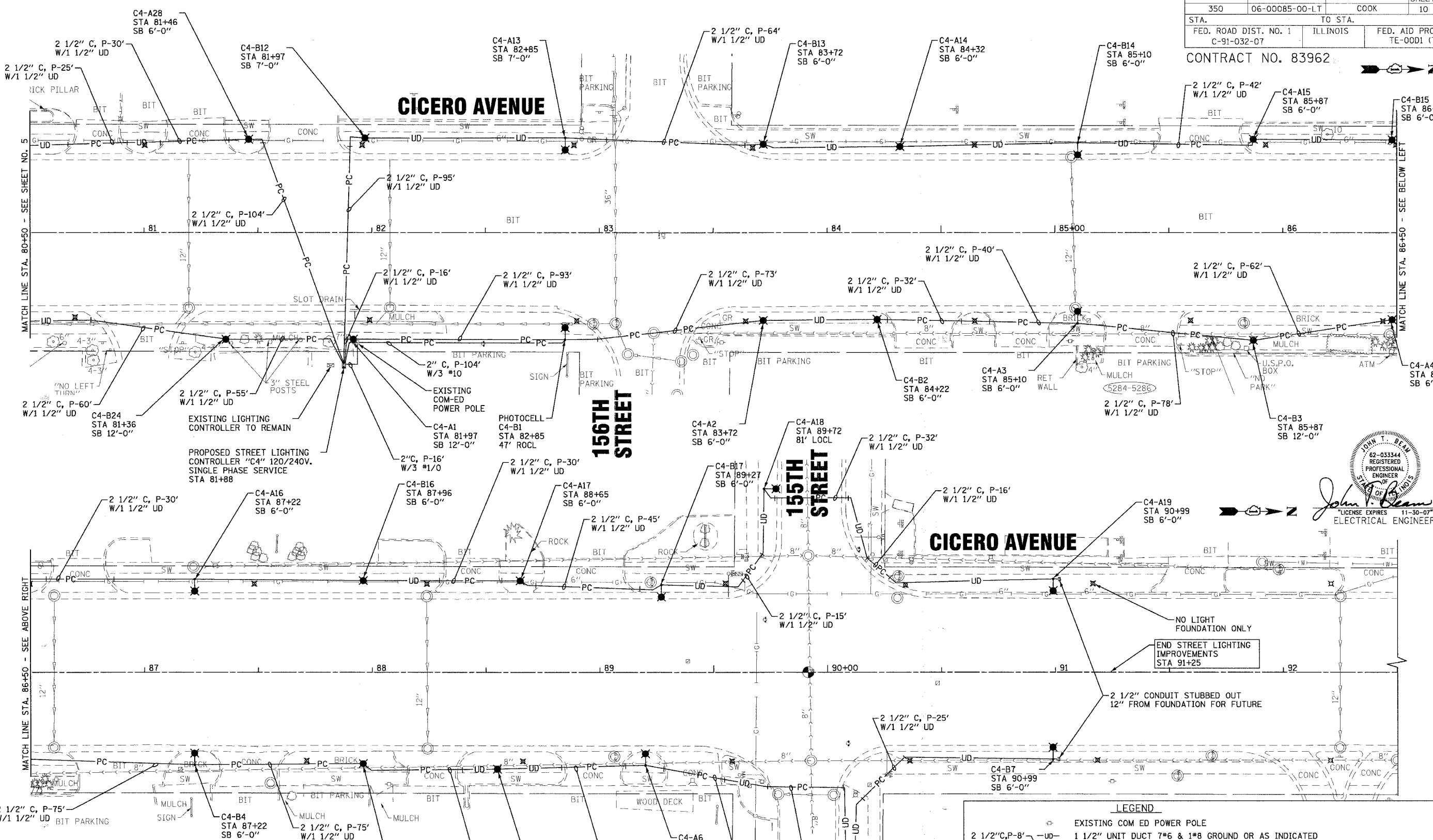
Baxter & Woodman
 Crystal Lake, Illinois 815.459.1260
 Itasca, Illinois 630.773.1870
 Burlington, Wisconsin 262.765.7854
 Mokena, Illinois 708.478.3090
 DeKalb, Illinois 815.787.8111
 Graylake, Illinois 847.233.5088
 Rockford, Illinois 815.489.1551
 Plainfield, Illinois 815.609.7425

CITY OF OAK FOREST, ILLINOIS
FAP 350 CICERO AVENUE IMPROVEMENTS
 (157TH ST. TO 159TH ST.)

STREET LIGHTING PLAN
CICERO AVENUE
 STA 68+50 TO STA 80+50

DESIGNED BY	JLR	SCALE	1"=20'
DRAWN BY	MAC	PROJECT NO.	060467
CHECKED BY	JTB	SHEET NO.	
DATE	06/21/07		

CONTRACT NO. 83962



John T. DeWitt
 REGISTERED PROFESSIONAL ENGINEER
 LICENSE EXPIRES 11-30-07
 ELECTRICAL ENGINEER

NOTES:

ALL AREAS DAMAGED OR DISTURBED BY THE INSTALLATION OF LIGHT POLES, FOUNDATIONS, UNDERGROUND CABLES, CONDUIT, AND CONTROL CABINET SHALL HAVE TOPSOIL REPLACED TO A DEPTH OF 4", FERTILIZED, AND HYDROSEED IN ACCORDANCE WITH APPLICABLE SECTION OF THE "STANDARD SPECIFICATIONS". THE WORK SHALL BE REPAIRED OR REPLACED BY THE CONTRACTOR AT NO ADDITIONAL COST.

ANY DAMAGE TO PAVEMENT, SIDEWALK, CURB, OR ANY OTHER PORTION OF THE ROADWAY NOT SPECIFICALLY TO BE REMOVED AND REPLACED SHALL BE REPAIRED OR REPLACED BY THE CONTRACTOR AT NO ADDITIONAL COST.

LEGEND

	EXISTING COM ED POWER POLE
	1 1/2" UNIT DUCT 7#6 & 1#8 GROUND OR AS INDICATED
	2 1/2" CONDUIT, PUSHED 8' LONG WITH 1 1/2" UNIT DUCT
	2" CONDUIT, TRENCHED 4' LONG WITH 3#1/0
	PROPOSED STREET LIGHT 40' MOUNTING HEIGHT, 310 WATT HPS, 240 VOLTS, W/15' ARM
	PROPOSED STREET LIGHT 15' MOUNTING HEIGHT, 70 WATT HPS, 240 VOLTS, W/2' ARM
	EXISTING LIGHTING UNIT REMOVE & SALVAGE
	SB SET BACK FROM BACK OF CURB
	EX EXISTING STREET LIGHTING WIRING TO REMAIN

NOTE: EXISTING STREET LIGHTING UNITS TO REMAIN IN OPERATION UNTIL NEW STREET LIGHTS ARE READY TO BE ENERGIZED.

COPYRIGHT © 2007 BY BAXTER & WOODMAN, INC.
 ALL RIGHTS RESERVED.
 STATE OF ILLINOIS PROFESSIONAL DESIGNER REG. NO. 061-080-0001
 3/17/2007

CONSULTANTS	REV. NO.	DATE	DESCRIPTION

REFER TO EQUIPMENT MANUFACTURER'S SHOP DRAWINGS

DRAWING FILE: #FILEA#

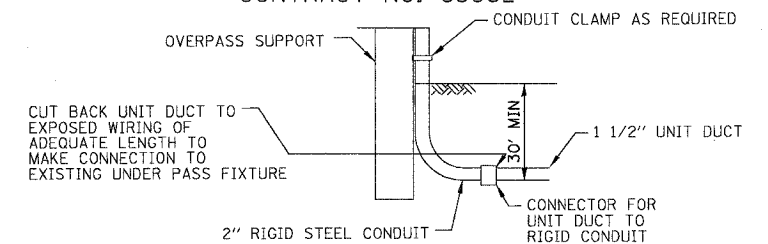
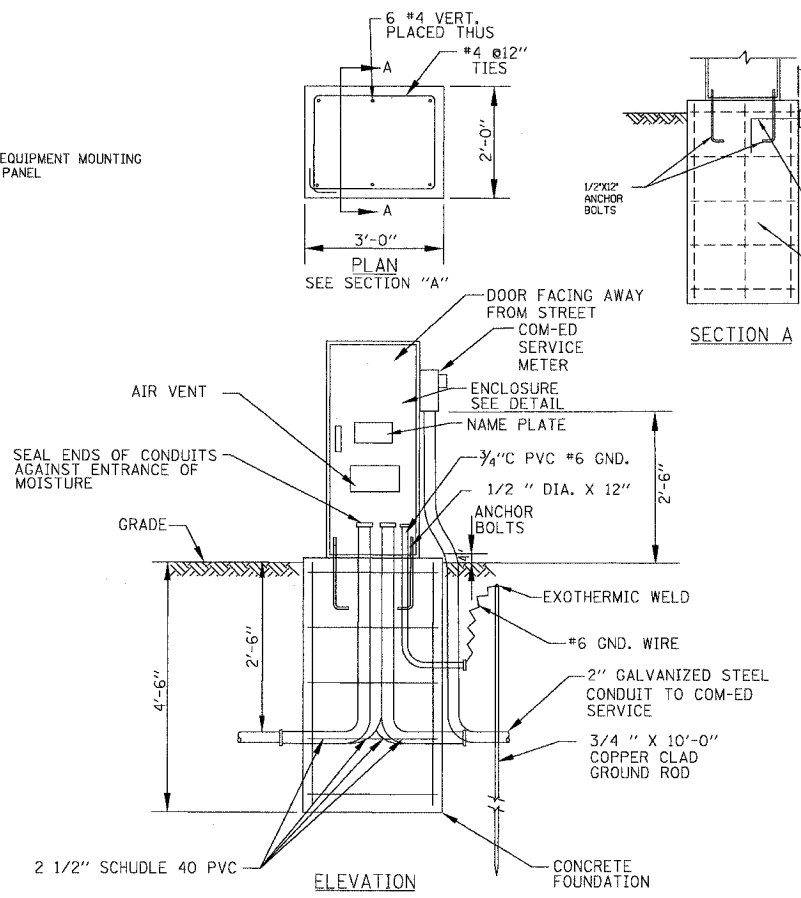
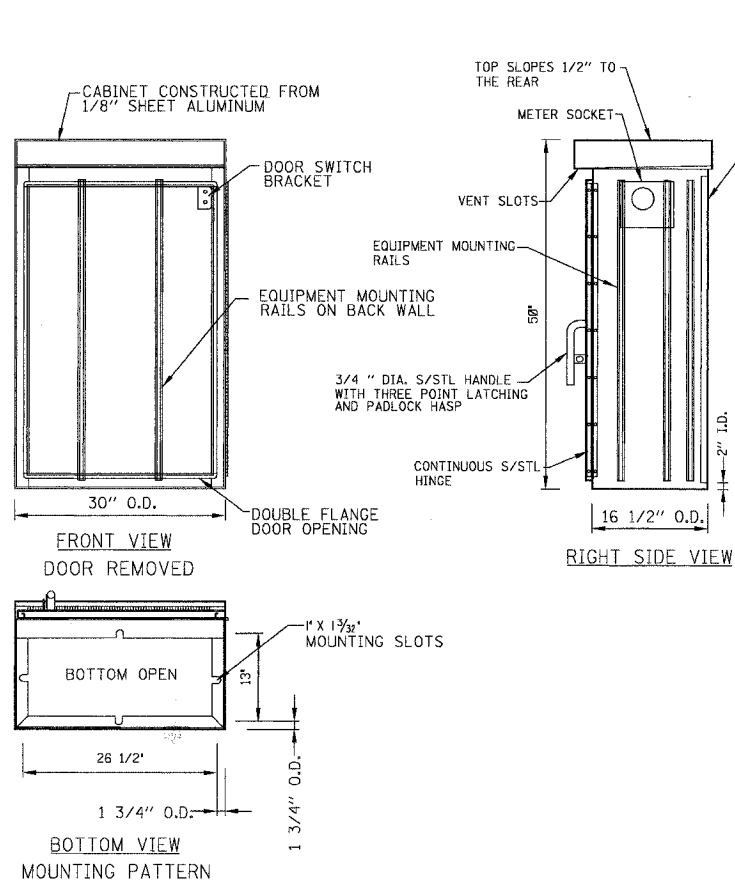
BAXTER & WOODMAN
 Consulting Engineers

Baxter & Woodman
 Crystal Lake, Illinois 815.459.1260
 Itasca, Illinois 630.773.1870
 Burlington, Wisconsin 262.763.7834
 Mokena, Illinois 708.478.2090
 DeKalb, Illinois 815.787.3111
 Grayslake, Illinois 847.223.5088
 Rockford, Illinois 815.488.1551
 Plainfield, Illinois 815.609.7425

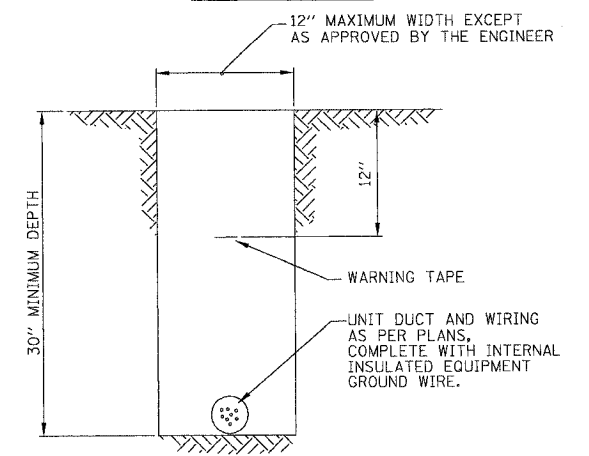
CITY OF OAK FOREST, ILLINOIS
FAP 350 CICERO AVENUE IMPROVEMENTS
 (155TH ST. TO 159TH ST.)

DESIGNED BY	JLR	SCALE	1"=20'
DRAWN BY	MAC	PROJECT NO.	060467
CHECKED BY	JTB	SHEET NO.	6 OF 10
DATE	06/21/07		

CONTRACT NO. 83962



TYPICAL DETAIL FOR SPLICING CONDUIT TO UNIT DUCT

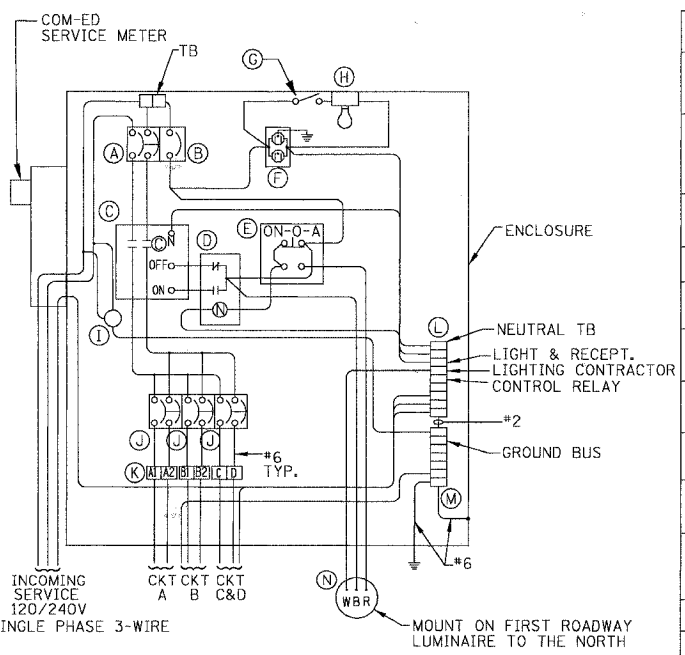


TYPICAL WIRING IN TRENCH DETAIL

LIGHTING CONTROLLER AND FOUNDATION DETAIL

NO SCALE

NO SCALE

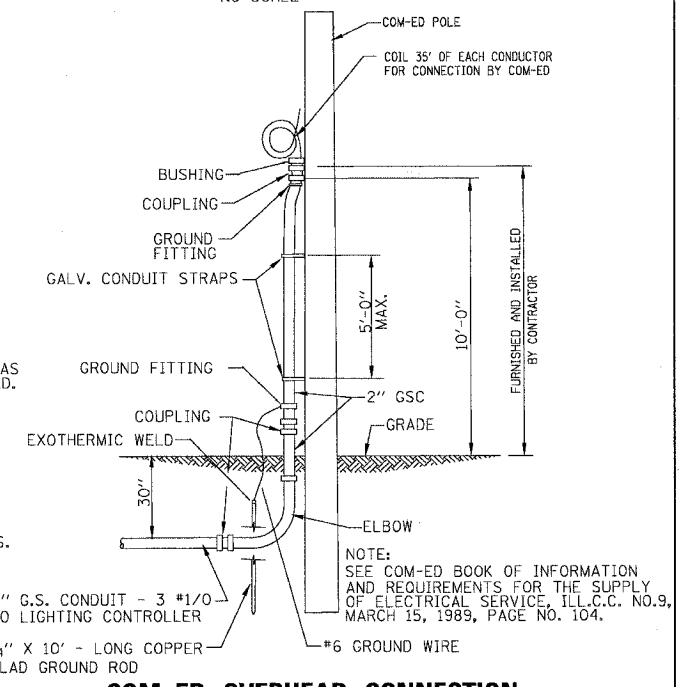


LIGHTING CONTROLLER No. 4 WIRING DIAGRAM

ITEM	QTY.	DESCRIPTION
A	1	MAIN CIRCUIT BREAKER, MOLDED CASE, THERMAL MAGNETIC, 2-POLE, 240 V. SINGLE-PHASE, 150A, BOLT-ON TYPE, TRIP INTERRUPTING RATING OF 22,000 RMS SYMMETRICAL AMPERES AT 240 V.
B	1	CONTROL CIRCUIT BREAKER, MOLDED CASE, THERMAL MAGNETIC, SINGLE-POLE, 120 V. SINGLE PHASE 20 A. BOLT-ON TYPE, TRIP INTERRUPTING RATING OF 14,000 RMS SYMMETRICAL AMPERES AT 120 V.
C	1	LIGHTING CONTACTOR MECHANICALLY HELD, SQUARE "D" SVO10600V 200A, 2-POLE, 600 V. WITH 120 COIL OR EQUAL
D	1	CONTROL RELAY CUTLER HAMMER D3PR2 RATED 12 A. AT 120 VAC OR EQUAL
E	1	ON-OFF-AUTO 3-POSITION SELECTOR SWITCH GE CR104P HEAVY DUTY SWITCH, RATED FOR 10 A. AT 600 VAC.
F	1	GFCI RECEPTACLE, 120 V., 20 A. SPEC. GRADE, NEMA CONFIG. 5-20R
G	1	SPDT LIMIT SWITCH WITH SIDE PUSH ROD PLUNGER SQUARE "D" 88082 RATED 10 A. AT 120 V. OR EQUAL
H	1	60 WATT LIGHT FIXTURE, VAPOR TIGHT, WITH GLOBE, GUARD AND MOUNTING BOX.
I	4	SECONDARY SURGE ARRESTER SQUARE D SDSA1175, 175 VAC PHASE-TO-GROUND MAXIMUM OR EQUAL
J	3	BRANCH CIRCUIT BREAKER, MOLDED CASE, THERMAL MAGNETIC, 2-POLE, 240 V. SINGLE-PHASE, 60A, TRIP INTERRUPTING RATING 22,000 RMS SYMMETRICAL AMPERES AT 240 V.
K	1	TERMINAL BLOCK RATED 600 V., 85 A.
L	1	COPPER NEUTRAL BUS
M	1	COPPER GROUND BUS

NOTES

- CABINET SHALL BE FABRICATED FROM 0.125-INCH SHEET ALUMINUM, ALLOY 5052 FORMED AND ARC WELDED ASSEMBLY WITH NEMA 3R RATING.
- ALL SCREWS AND HARDWARE SHALL BE PLATED, GALVANIZED, OR MADE OF BRASS, ALUMINUM OR STAINLESS STEEL.
- NAME PLATE SHALL HAVE ENGRAVED 0.75-INCH HIGH LETTERS FILLED IN BLACK: LINE ONE "CITY OF OAK FOREST", LINE TWO "STREET LIGHTING"
- CABINET SHALL BE PRIMED AND PAINTED AS SPECIFIED.
- ELECTRIC UTILITY METER BOX SHALL BE MOUNTED ON THE SIDE OF CONTROL CABINET AS SHOWN ON THE PANEL LAYOUT DIAGRAM.
- THE COMPLETED CONTROLLER AND ALL ELECTRICAL COMPONENTS SHALL BE U.L. LISTED AS AN INDUSTRIAL CONTROL PANEL UNDER UL508, AND SHOULD BE SERVICE ENTRANCE RATED.
- METAL MOUNTING PANEL SHALL BE #10 GAUGE GALVANIZED SHEET STEEL FLANGED BACK 0.75-INCHES I.D. ON 4 SIDES.
- CIRCUIT BREAKERS AND CONTACTOR AND OTHER COMPONENTS SHALL BE MOUNTED ON 0.125-INCH THICK GLASTIC INSULATION BACK PANEL.
- ALL DEVICES SHALL BE FRONT REMOVABLE.
- BUS BAR SHALL HAVE 22 LUG TERMINALS SIZED TO ACCOMMODATE REQUIRED WIRE SIZES. NEUTRAL BUS SHALL BE PAINTED WHITE. GROUND BUS SHALL BE PAINTED GREEN.
- ALL LUGS SHALL BE COPPER SCREWS AND CONNECTORS, SPRING HELD.
- ALL WIRING TERMINATIONS SHALL BE RATED NOT LESS THAN 75 DEGREE CENTIGRADE.
- ALL CONTROL WIRING SHALL BE 600V MACHINE TOOL WIRE TYPE MTW.
- ALL POWER WIRING SHALL BE 600V TYPE RHH/RHW.
- A LAMINATED COPY OF THE CIRCUIT SCHEMATIC DIAGRAM SHALL BE ATTACHED TO THE INSIDE OF THE CONTROLLER.
- ALL 120 VOLT SYSTEM AND ALL CONTROL WIRING SHALL BE #12 AWG STRANDED UNLESS OTHERWISE INDICATED.
- ALL WIRING SHALL BE NEATLY DRESSED AND SUPPORTED.
- SERVICE EQUIPMENT SHALL BE MARKED TO IDENTIFY IT AS BEING SUITABLE FOR USE AS SERVICE EQUIPMENT.



COM-ED OVERHEAD CONNECTION

NO SCALE



John L. Dan
ELECTRICAL ENGINEER

COPYRIGHT © 2007 BY BAXTER & WOODMAN, INC.
 STATE OF ILLINOIS - PROFESSIONAL DESIGN FIRM
 LICENSE NO. 084-00017 - EXPIRES 4/30/2009
 2500 N. WISCONSIN ST., SUITE 200, OAK FOREST, IL 60451

CONSULTANTS	REV. NO.	DATE	DESCRIPTION

* REFER TO EQUIPMENT MANUFACTURER'S SHOP DRAWINGS

DRAWING FILE: #FILEA#

BAXTER & WOODMAN
Consulting Engineers

Baxter & Woodman
Crystal Lake, Illinois 815.489.1260
Hawco, Illinois 815.773.1870
Burlington, Wisconsin 262.763.7634
Mokena, Illinois 708.478.2090
DeKalb, Illinois 815.787.8111
Orystal, Illinois 847.293.0988
Rockford, Illinois 815.489.1653
Plainfield, Illinois 815.609.7485

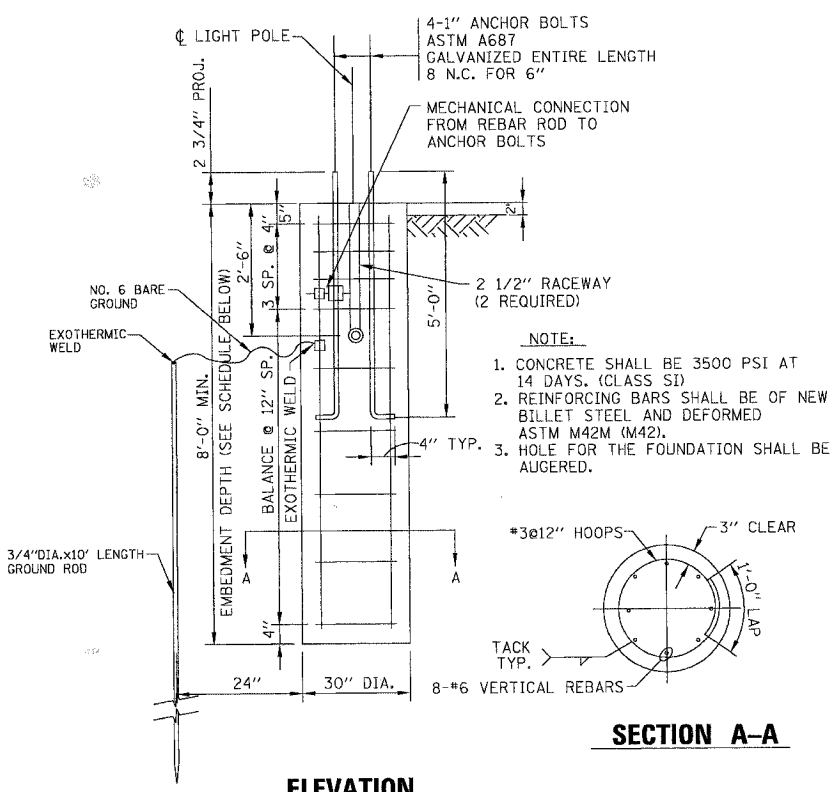
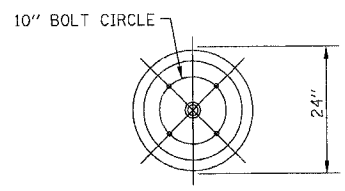
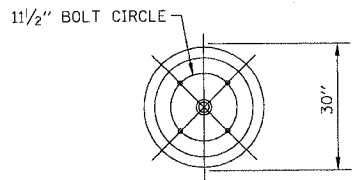
CITY OF OAK FOREST, ILLINOIS
FAP 350 CICERO AVENUE IMPROVEMENTS
(155TH ST. TO 159TH ST.)

STREET LIGHTING DETAILS

DESIGNED BY: JLR
DRAWN BY: MAC
CHECKED BY: JTB
DATE: 06/21/07

SCALE: NONE
PROJECT NO.: 060467
SHEET NO.: 7 OF 10

CONTRACT NO. 83962



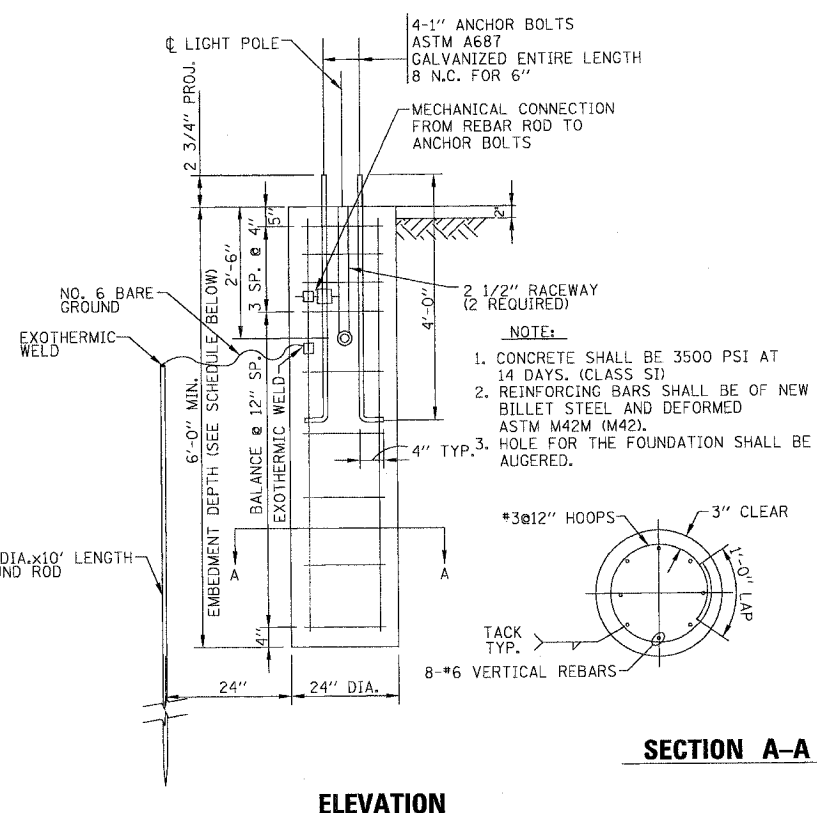
ELEVATION

ROADWAY LIGHT UNIT TYPICAL

FOUNDATION SCHEDULE		
TYPE OF SOILS		EMBEDMENT
DESCRIPTION	STANDARDS	
SOFT CLAY	Qu = .25-.50 T/FT ²	13'-0"
MEDIUM CLAY	Qu = .25-.50 T/FT ²	10'-0"
DENSE CLAY	Qu = .25-.50 T/FT ²	8'-0"
LOOSE SAND	N = 4-10	10'-6"
MEDIUM SAND	N = 10-30	9'-0"
DENSE SAND	N = 30-50	8'-6"

ROADWAY LIGHT UNIT POLE FOUNDATION (TYPICAL)

NO SCALE



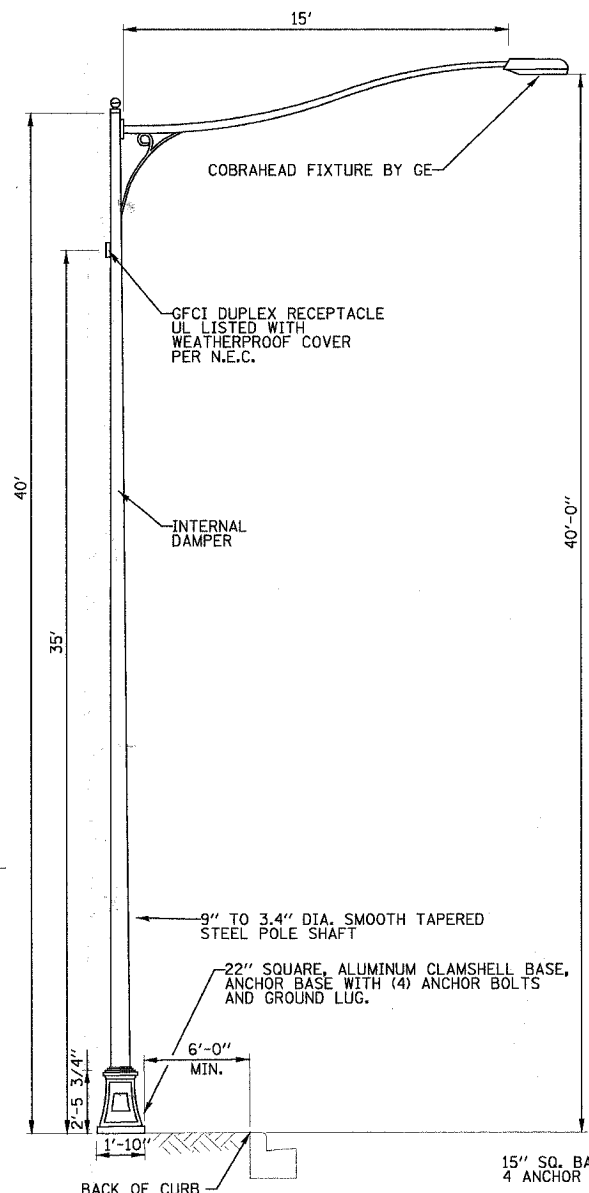
ELEVATION

ORNAMENTAL LIGHT UNIT TYPICAL

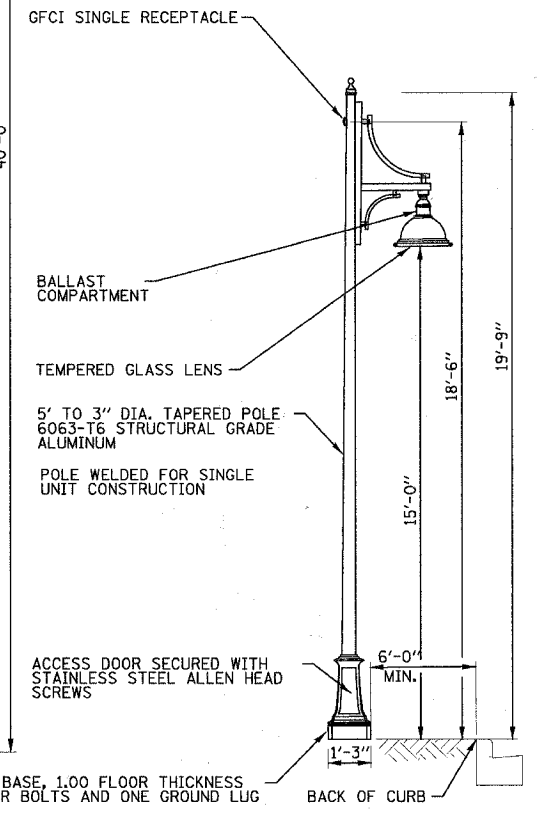
FOUNDATION SCHEDULE		
TYPE OF SOILS		EMBEDMENT
DESCRIPTION	STANDARDS	
SOFT CLAY	Qu = .25-.50 T/FT ²	11'-0"
MEDIUM CLAY	Qu = .25-.50 T/FT ²	8'-0"
DENSE CLAY	Qu = .25-.50 T/FT ²	6'-0"
LOOSE SAND	N = 4-10	8'-6"
MEDIUM SAND	N = 10-30	7'-0"
DENSE SAND	N = 30-50	6'-6"

ORNAMENTAL LIGHT UNIT POLE FOUNDATION (TYPICAL)

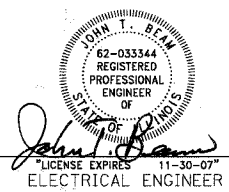
NO SCALE



ROADWAY LIGHT UNIT



ORNAMENTAL LIGHT UNIT



COPYRIGHT © 2007 BY BAXTER & WOODMAN, INC.
 STATE OF ILLINOIS - PROFESSIONAL DESIGN FIRM
 LICENSE NO. - 84-00027 - EXPIRES 4/23/2009
 5717 2521
 432255 P.M.

CONSULTANTS	REV. NO.	DATE	DESCRIPTION

* REFER TO EQUIPMENT MANUFACTURER'S SHOP DRAWINGS

DRAWING FILE: #FILEA#



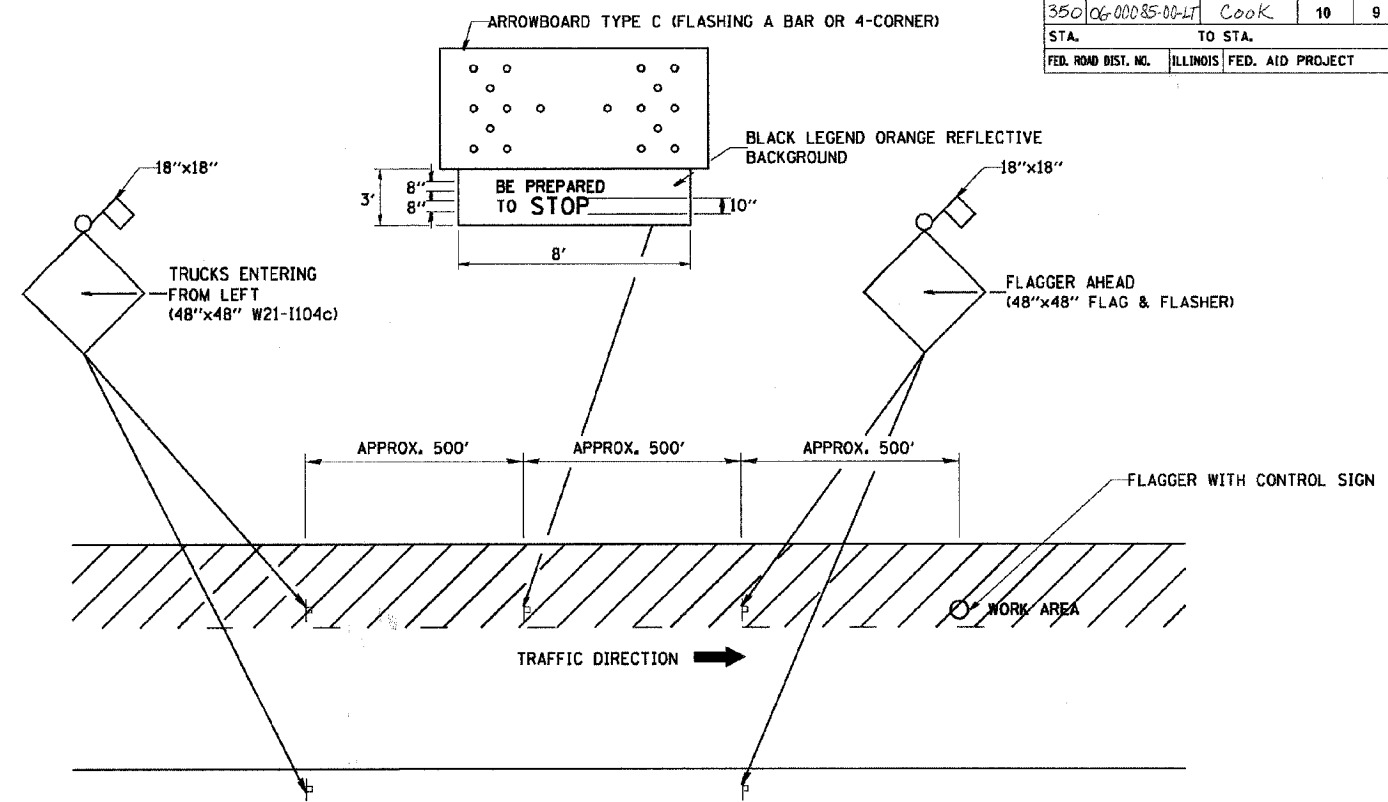
Baxter & Woodman
 Crystal Lake, Illinois 815.489.1280
 Inveso, Illinois 630.773.1870
 Burlington, Wisconsin 262.763.7834
 Mokena, Illinois 708.478.2090
 DeKalb, Illinois 815.787.3111
 Oremville, Illinois 847.293.5088
 Rockford, Illinois 815.489.1551
 Plainfield, Illinois 815.609.7485

CITY OF OAK FOREST, ILLINOIS
 FAP 350 CICERO AVENUE IMPROVEMENTS
 (155TH ST. TO 159TH ST.)

**STREET LIGHTING
 DETAILS**

DESIGNED BY	JLR	SCALE	NONE
DRAWN BY	MAC	PROJECT NO.	060467
CHECKED BY	JTB	SHEET NO.	
DATE	06/21/07		8 OF 10

F.A. RTE.	SECTION	COUNTY	TOTAL SHEETS	SHEET NO.
350	06-00085-00-4T	Cook	10	9
STA.	TO STA.			
FED. ROAD DIST. NO.	ILLINOIS	FED. AID PROJECT		



METHOD OF FLAGGING

NOTE:

1. SIGNS SHALL BE MOUNTED AT A MINIMUM CLEARANCE HEIGHT OF 5 FEET
2. ALL SIGNS SHALL BE REMOVED WHEN THE FLAGGING OPERATION CEASES.
3. THIS CASE ALSO APPLIES WHEN THE WORK ZONE IS ON THE RIGHT. UNDER THESE CONDITIONS "TRUCKS ENTERING FROM RIGHT" SIGNS SHALL BE SUBSTITUTED FOR "TRUCKS ENTERING FROM LEFT" SIGNS. ALSO THE ARROWBOARD AND "BE PREPARED TO STOP" SIGNS SHALL BE RELOCATED TO THE RIGHT SIDE OF THE ROAD.
4. WORK ZONE ACCESS POINTS SHOULD BE A MINIMUM OF ONE HALF MILE APART. MEDIAN WORK ZONE ACCESS POINTS SHOULD NOT BE LOCATED OPPOSITE OF EACH OTHER.
5. NIGHTTIME FLAGGING OPERATIONS: THE FLAG STATION SHALL BE LIGHTED WITH ADDITIONAL LIGHTS OTHER THAN STREET LIGHTS. THE FLAGGER CONTROL SIGN AND THE FLAGGER'S VEST SHALL BE REFLECTORIZED. IN ADDITION, THE FLAGGER SHALL HAVE A FLASHLIGHT OR LIGHTED WAND.

REVISIONS	
NAME	DATE
RAY RITCHIE	5/10/00

ILLINOIS DEPARTMENT OF TRANSPORTATION

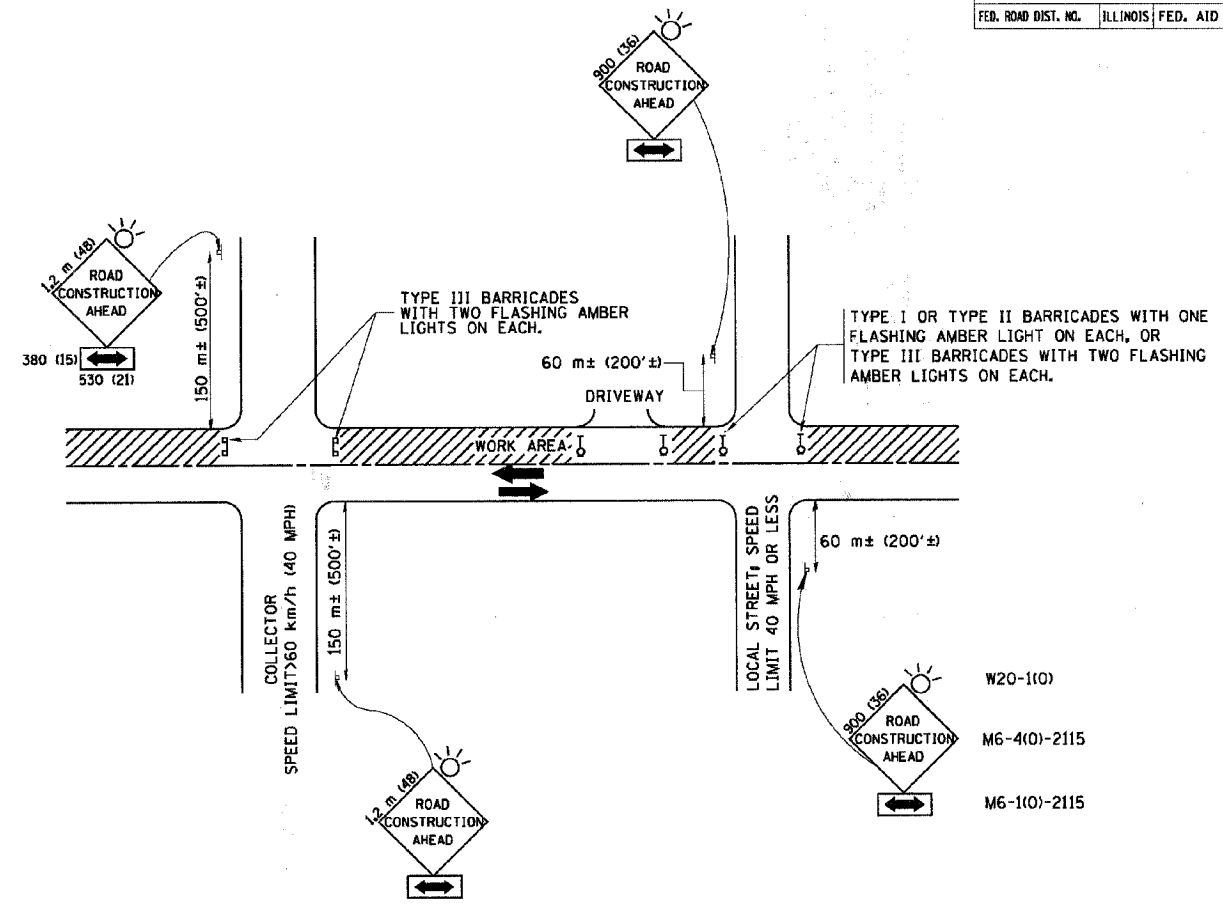
METHOD OF FLAGGING

SCALE: NOT TO SCALE
DATE: 2/15/2006

DRAWN BY C.A.D.
CHECKED BY
BM-14

PLOT DATE = 2/15/2006
FILE NAME = w:\dave\104\14.dgn
PLOT SCALE = 4x11/8.5x11.69
USER NAME = gajilaweb

F.A. RTE.	SECTION	COUNTY	TOTAL SHEETS	SHEET NO.
350	06-00085-001	Cook	10	10
STA.		TO STA.		
FED. ROAD DIST. NO.		ILLINOIS FED. AID PROJECT		



TRAFFIC CONTROL AND PROTECTION FOR SIDE ROADS, INTERSECTIONS, AND DRIVEWAYS

NOTES:

- A. FOR NO LANE RESTRICTION ON THE SIDE ROAD OR DRIVEWAYS**
- SIDE ROAD WITH A SPEED LIMIT OF 60 km/h (40 MPH) OR LESS AS SHOWN ON THE DRAWING AND AS DIRECTED BY THE ENGINEER:
 - ONE ROAD CONSTRUCTION AHEAD SIGN 900x900 (36x36) WITH A FLASHER AND FLAG MOUNTED ON IT APPROXIMATELY 60 m (200') IN ADVANCE OF THE MAIN ROUTE.
 - THE CLOSED PORTION OF THE MAIN ROUTE SHALL BE PROTECTED BY BLOCKING WITH TYPE I, TYPE II OR TYPE III BARRICADES, 1/3 OF THE CROSS SECTION OF THE CLOSED PORTION.
 - SIDE ROAD WITH A SPEED LIMIT GREATER THAN 60 km/h (40 MPH) AS SHOWN ON THE DRAWING AND AS DIRECTED BY THE ENGINEER:
 - ONE ROAD CONSTRUCTION AHEAD SIGN 1.2 m x 1.2 m (48x48) WITH A FLASHER MOUNTED ON IT APPROXIMATELY 150 m (500') IN ADVANCE OF THE MAIN ROUTE.
 - THE CLOSED PORTION OF THE MAIN ROUTE SHALL BE PROTECTED BY BLOCKING WITH TYPE III BARRICADES, 1/2 OF THE CROSS SECTION OF THE CLOSED PORTION.
- 3. WHEN THE SIDE ROAD LIES BETWEEN THE BEGINNING OF THE MAINLINE SIGNING AND THE WORK ZONE, A SINGLE HEADED ARROW (M6-1) SHALL BE USED IN LIEU OF THE DOUBLE HEADED ARROW (M6-4).**
- B. FOR A LANE CLOSURE ON A SIDE ROAD OR DRIVEWAY:**
 USE APPLICABLE PORTIONS OF THE TYPICAL APPLICATION OF TRAFFIC CONTROL DEVICES (STD. 701501, STD. 701606 OR THE APPROPRIATE STANDARD). THE SPACING OF SIGNS AND BARRICADES SHALL BE ADJUSTED FOR FIELD CONDITIONS AS DIRECTED BY THE ENGINEER. THE DIRECTIONAL ARROW SHALL BE COVERED OR REMOVED WHEN NO LONGER CONSISTENT WITH THE SIDE ROAD LANE CLOSURE.
- C. ADVANCE WARNING SIGNS ARE TO BE OMITTED ON DRIVEWAY UNLESS OTHERWISE NOTED.**
- D. THE TRAFFIC CONTROL AND PROTECTION FOR SIDE ROADS, INTERSECTIONS, AND DRIVEWAYS SHALL BE INCIDENTAL TO THE COST OF SPECIFIED TRAFFIC CONTROL STANDARDS OR ITEMS.**

REVISIONS	
NAME	DATE
LHA	6/89
T. RAMMACHER	09/08/94
J. OBERLE	10/18/95
A. HOUSEH	03/06/96
A. HOUSEH	10/15/96
T. RAMMACHER	01/06/00

ILLINOIS DEPARTMENT OF TRANSPORTATION
TRAFFIC CONTROL AND PROTECTION FOR SIDE ROADS, INTERSECTIONS, AND DRIVEWAYS

SCALE: _____ DRAWN BY _____
 DATE: 2/15/2006 CHECKED BY _____

TC-10
 REVISION DATE: 01/06/00

PLOT DATE = 2/15/2006
 FILE NAME = w:\data\10\1018.dgn
 PLOT SCALE = 68.889 / IN.
 USER NAME = gajlenob