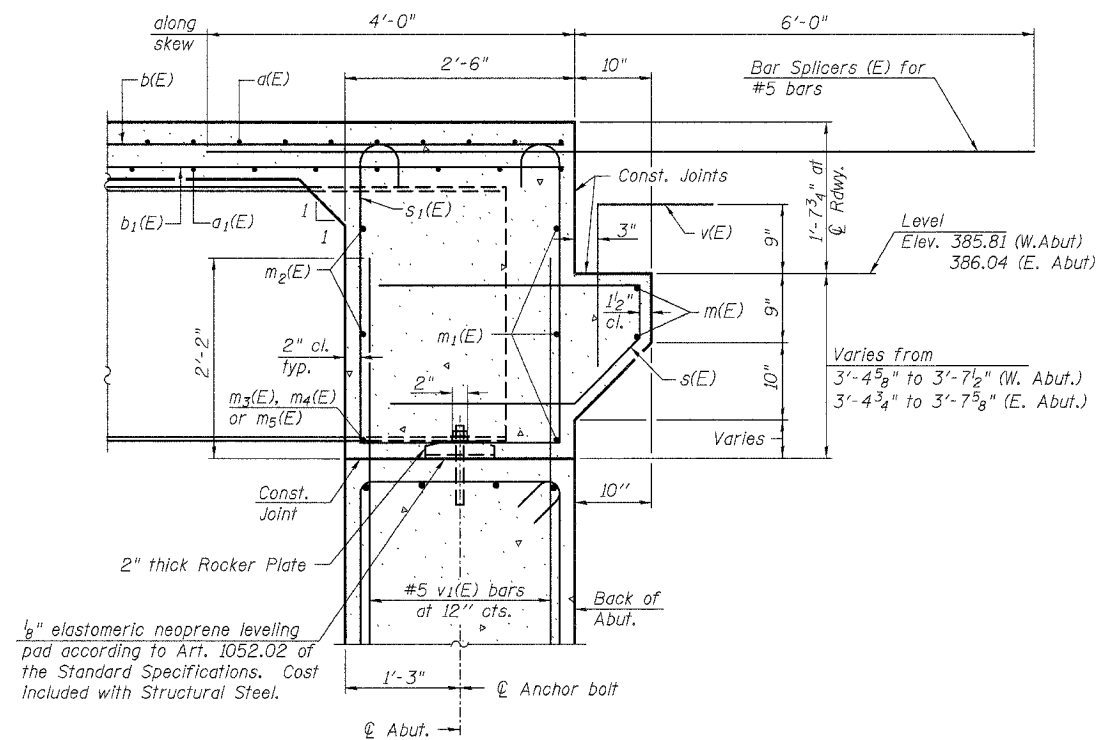


**DIAPHRAGM ELEVATION AT EAST ABUTMENT**  
(Looking East)  
(West Abutment mirrored about  $\phi$  Roadway)

Notes:  
Reinforcement bars in diaphragm are billed with superstructure on sheet 7 of 16.  
Concrete in diaphragm is Included with Concrete Superstructure on sheet 7 of 16.  
For details of bars s(E) & s1(E) see sheet 7 of 16.  
The s(E) and s1(E) bars shall be placed parallel to the beams. Spacing for these bars shall be at right angles to the beams.  
For location of holes thru web, see sheet 9 of 16.

**MIN. BAR LAP**  
#6 bar = 2'-9"



**SECTION A-A**  
Dimensions at right angles to abutment, except as shown.

**LIN ENGINEERING, LTD.**  
Consulting Engineers  
Chatham, Illinois  
Designed By: KJH Checked By: MTH Drawn By: AJF  
Date: 3/2007 File: 044-0059.DGN

REVISIONS	
NAME	DATE

ILLINOIS DEPARTMENT OF TRANSPORTATION  
**CONCRETE END DIAPHRAGMS**  
ILLINOIS ROUTE 146 OVER  
BUCK RUN CREEK  
F.A.P. ROUTE 885 - SEC. (107A)B-1  
JOHNSON COUNTY  
STA. 628+25.00  
STRUCTURE NO. 044-0059