

T.R.	SECTION	COUNTY	TOTAL SHEETS	SHEET NO.
228	06-12122-00-BR	HAMILTON	15	1
FED. ROAD DIST. NO. 9 ILLINOIS		FED. AID PROJECT		323 W. 3RD. ST. P.O. BOX 100 MT. CARMEL, IL 62863
PROJECT # BROS-065(41)		CONTRACT # 99304		PHONE: (618)-262-8651 FAX: (618)-263-3327
JOB # C-99-511-07		HOGG CREEK		LEC JOB # H06102HM

405 W. STATE ST.
SUITE 1
PRINCETON, IN
47670
PHONE:
(812)-386-7611
FAX:
(812)-385-2812



PROFESSIONAL
DESIGN FIRM
LAND SURVEY &
PROFESSIONAL
ENGINEERING
CORPORATION
184-00087
(62-032435)(35-002769)



AARON M. MEFFORD
NAME
Aaron Mefford
SIGNATURE
9-10-07
DATE
11-30-07
EXPIRES

TWIGG TOWNSHIP
OVER HOGG CREEK
HAMILTON COUNTY, ILLINOIS

SHEET TITLE:

TITLE SHEET

SCALE: WRES

BY: AMM

DATE: 9/5/07

REV:

1 OF 15

SHEETS

SHEET NO.

1

INDEX OF SHEETS

SHEET NO.	DESCRIPTION
1	TITLE SHEET & SUMMARY OF QUANTITIES
2	PLAN & PROFILE, TYPICAL SECTIONS & GENERAL NOTES
3-4	ROADWAY CROSS SECTIONS
5-14	BRIDGE DESIGN
15	CURLED END SECTIONS & STONE RIPRAP DITCH DESIGN

THE FOLLOWING STANDARDS ARE A PART OF THESE PLANS AND ARE INCLUDED IN THE PROPOSAL:

000001-04	STANDARD SYMBOLS, ABBREVIATIONS & PATTERNS
280001-03	TEMPORARY EROSION CONTROL SYSTEMS
702001-06	TRAFFIC CONTROL DEVICES
720006-01	SIGN PANEL ERECTION DETAILS
720011	METAL POSTS FOR SIGNS, MARKERS & DELINEATORS
729001	APPLICATIONS OF TYPES A & B METAL POSTS (FOR SIGNS & MARKERS)
B.L.R. 21-6	TYPICAL APPLICATION OF TRAFFIC CONTROL DEVICES FOR CONSTRUCTION ON RURAL LOCAL HIGHWAYS
B.L.R. 22-4	TYPICAL APPLICATION OF TRAFFIC CONTROL DEVICES FOR CONSTRUCTION ON RURAL LOCAL HIGHWAYS (TWO-LANE TWO-WAY RURAL TRAFFIC) (ROAD CLOSED TO THRU TRAFFIC)

SUMMARY OF QUANTITIES

CODE NO.	ITEM	UNIT	QUANTITY
20100110	TREE REMOVAL (6 TO 15 UNITS DIAMETER)	UNIT	12.00
20100210	TREE REMOVAL (OVER 15 UNITS DIAMETER)	UNIT	18.00
20200100	EARTH EXCAVATION	CU YD	366.00
20300100	CHANNEL EXCAVATION	CU YD	369.00
25001000	SEEDING, CLASS 2 (SPECIAL)	ACRE	0.40
28000300	TEMPORARY DITCH CHECKS	EACH	6.00
28001000	AGGREGATE (EROSION CONTROL)	TON	25.00
28100807	STONE DUMPED RIPRAP, CLASS A4	TON	470.00
28102600	STONE RIPRAP DITCH	TON	16.00
40200800	AGGREGATE SURFACE COURSE, TYPE B	TON	390.00
50100100	REMOVAL OF EXISTING STRUCTURES	EACH	1.00
50300225	CONCRETE STRUCTURES	CU YD	37.60
50300280	CONCRETE ENCASEMENT	CU YD	4.70
50400405	PRECAST PRESTRESSED CONCRETE DECK BEAMS (21" DEPTH)	SQ FT	2760.00
50500505	STUD SHEAR CONNECTORS	EACH	36.00
50800105	REINFORCEMENT BARS	POUND	4340.00
50900205	STEEL RAILING, TYPE S1	FOOT	230.00
51201400	FURNISHING STEEL PILES HP10X42	FOOT	1080.00
51202305	DRIVING PILES	FOOT	1080.00
51500100	NAME PLATES	EACH	1.00
▲ 63100075	TRAFFIC BARRIER TERMINAL, TYPE 5A	EACH	1.00
67100100	MOBILIZATION	L SUM	1.00
72000100	SIGN PANEL - TYPE 1	SQ FT	12.50
72900100	METAL POST - TYPE A	FOOT	29.00
▲ LR631020	TRAFFIC BARRIER TERMINAL, TYPE 1	EACH	1.00

▲ SPECIALTY ITEM

DESIGN DESIGNATION:
DESIGN SPEED: 30 MPH
HIGHWAY CLASS - LOCAL ROAD
EXISTING STRUCTURE NO.: 033-3083
PROPOSED STRUCTURE NO.: 033-3307
CURRENT A.D.T. = 50
CONTRACT NO. 99304

J.U.L.I.E.
JOINT UTILITY LOCATION INFORMATION FOR EXCAVATION
1-800-892-0123

STATE OF ILLINOIS

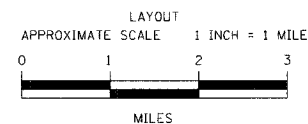
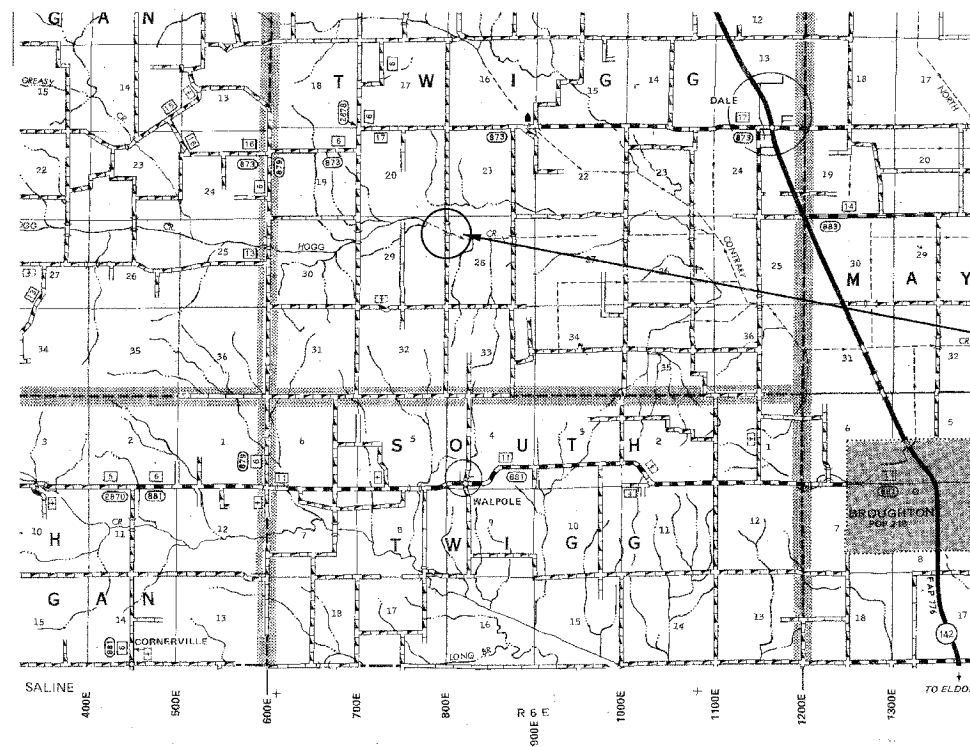
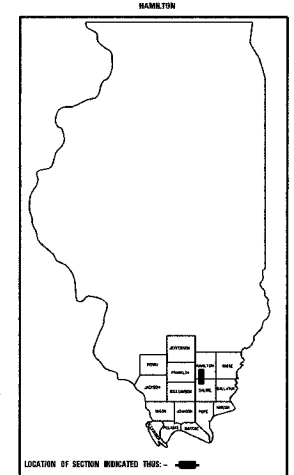
DEPARTMENT OF TRANSPORTATION

PLANS FOR PROPOSED FEDERAL AID - H.B.P. PROJECT

T.R. 228 HAMILTON COUNTY SECTION 06-12122-00-BR

PROJECT NO. BROS-065(41) JOB NO. C-99-511-07

CONTRACT # 99304 HOGG CREEK



	FOOT	MILES
GROSS LENGTH	703.00 FT	0.13 MILES
OMISSIONS	0.00 FT	0.00 MILES
NET LENGTH	703.00 FT	0.13 MILES

PLAN	1" = 50'	
PROFILE	1" = 50'	
PROFILE VERT.	1" = 5'	
CROSS SECTION	1" = 5'	

SECTION 06-12122-00-BR
BEGINS STATION 2+30

STATION 5+00, STRUCTURE NO. 033-3307
A 115' LONG TRIPLE SPAN PRECAST
PRESTRESSED CONCRETE DECK BEAM
BRIDGE (21" DEPTH, 24' ROADWAY,
0.00% GRADE, 30° LT. FWD. SKEW.

SECTION 06-12122-00-BR
ENDS STATION 9+33

STATE OF ILLINOIS
DEPARTMENT OF TRANSPORTATION

APPROVED 9-10-07
Kim D. [Signature]
COUNTY ENGINEER

PASSED Sept. 11, 2007
Dennis W. Hillbman
ENGINEER OF LOCAL ROADS AND STREETS

RELEASING FOR BID
BASED ON LIMITED
REVIEW Sept. 12, 2007
Mary C. Lamie
MARY C. LAMIE, P.E.
DEPUTY DIRECTOR OF HIGHWAY
REGION FIVE ENGINEER