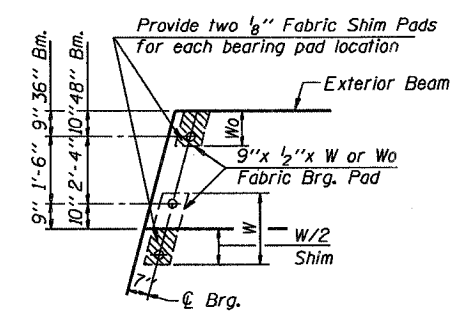
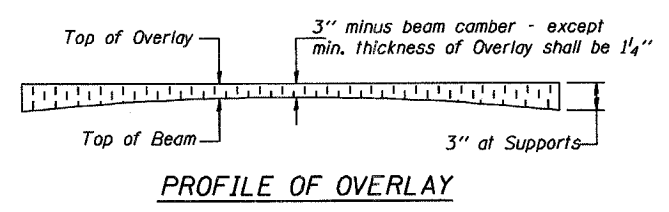
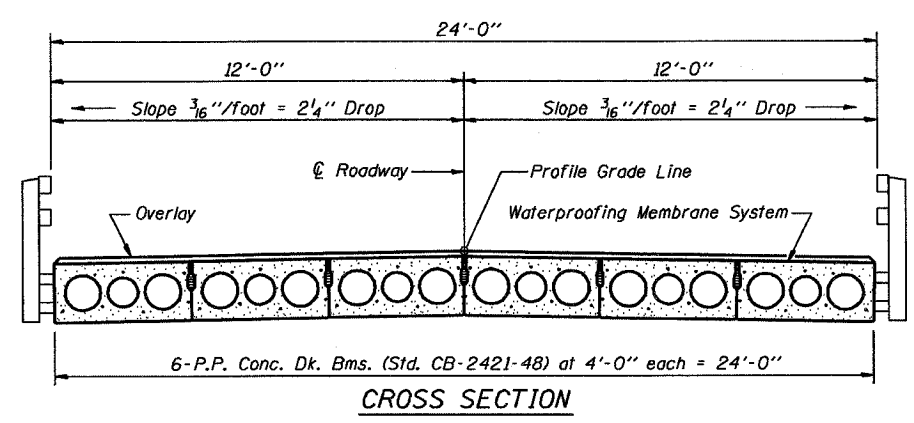
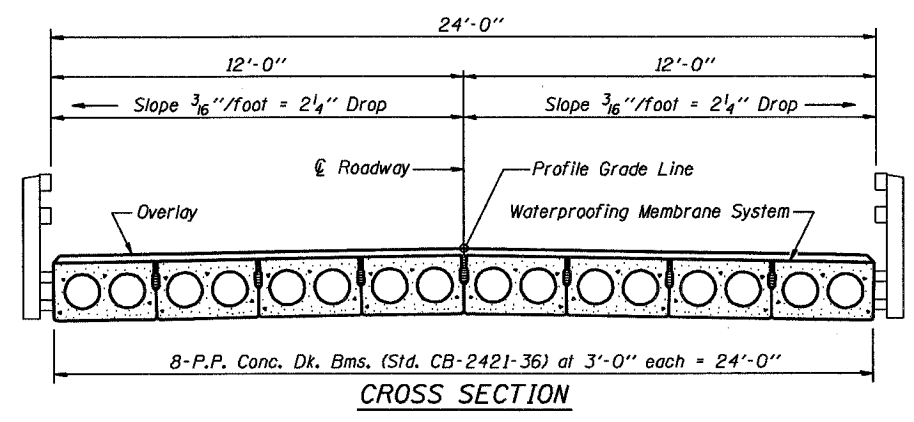


NOTES

- After beams have been erected, holes shall be drilled into substructure and anchor dowels placed. Dowel holes shall be filled with non-shrink grout to top of beam and allowed to cure min. 24 hrs. prior to grouting the shear keys.
- Nominal 1" joint at $\text{\textcircled{C}}$ Pier shall be filled with non-shrink grout.
- Longitudinal keys shall be grouted.

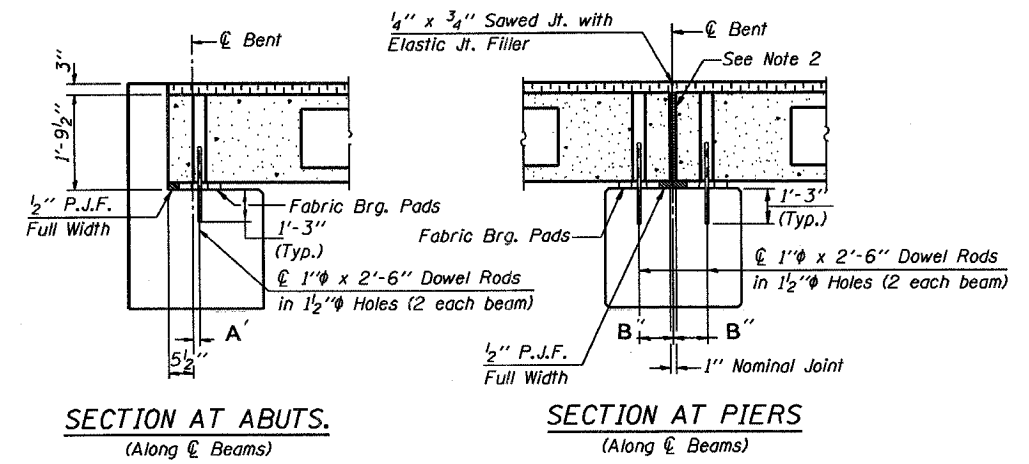


Beam	W	Wo
36"	2'-1"	1'-0 1/2"
48"	2'-5"	1'-2 1/2"



DIMENSIONS 'A' AND 'B'

D	5°	10°	15°	20°	25°	30°
A	1 1/2"	1 5/8"	1 3/4"	1 7/8"	2 1/4"	2 5/8"
B	7 1/2"	7 5/8"	7 3/4"	8"	8 1/4"	8 5/8"



QUANTITIES FOR ONE SPAN

P.P. Conc. Dk. Bm. 17" Dp.	840 Sq. Ft.
Steel Railing	70 Ft.
Waterproofing Membrane System	93.3 Sq. Ft.
Portland Cement Mortar	245 Ft. 36"
Fairing Course	175 Ft. 48"

Note: Quantity of overlay for one span = 14.3 Tons

P.P.C. DECK BEAM SUPERSTRUCTURE			
24' RDWY.	21" BMS.	35' SPAN	LEFT
STANDARD CS-2421-35L			

Illinois Department of Transportation

PASSED APRIL 4, 2005
Theresa J. [Signature]
Engineer of Bridge Design

APPROVED APRIL 4, 2005
Ralph E. [Signature]
Engineer of Bridges and Structures

ISSUED 1-1-10