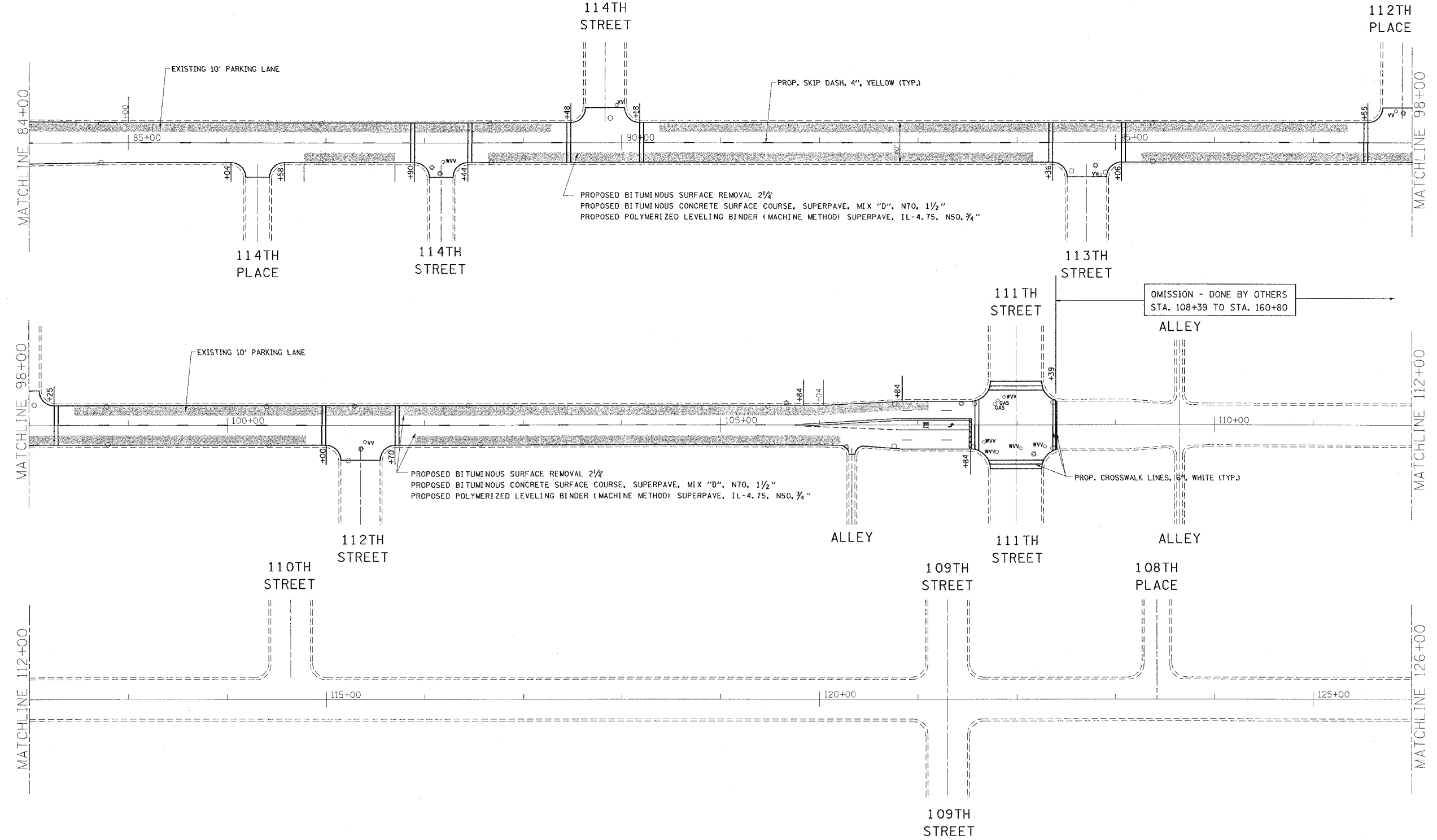
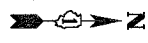


F.A.U. RTE.	SECTION	COUNTY	TOTAL SHEETS	SHEET NO.
VAR.	2003-094 RS	COOK	32	8
STA. 84+00		TO STA. 126+00		
FED. ROAD DIST. NO. 1		ILLINOIS FED. AID PROJECT		



PROPOSED BITUMINOUS SURFACE REMOVAL 2 1/4"
 PROPOSED BITUMINOUS CONCRETE SURFACE COURSE, SUPERPAVE, MIX "D", N70, 1 1/2"
 PROPOSED POLYMERIZED LEVELING BINDER (MACHINE METHOD) SUPERPAVE, IL-4.75, N50, 3/4"

PROPOSED BITUMINOUS SURFACE REMOVAL 2 1/4"
 PROPOSED BITUMINOUS CONCRETE SURFACE COURSE, SUPERPAVE, MIX "D", N70, 1 1/2"
 PROPOSED POLYMERIZED LEVELING BINDER (MACHINE METHOD) SUPERPAVE, IL-4.75, N50, 3/4"

REVISIONS	
NAME	DATE

ILLINOIS DEPARTMENT OF TRANSPORTATION
 PAVEMENT MARKINGS AND
 ROADWAY PLANS FOR
 KEDZIE AVENUE
 SCALE: VERT. 1" = 50'
 HORIZ. 1" = 50'
 DATE _____ DRAWN BY _____
 CHECKED BY _____