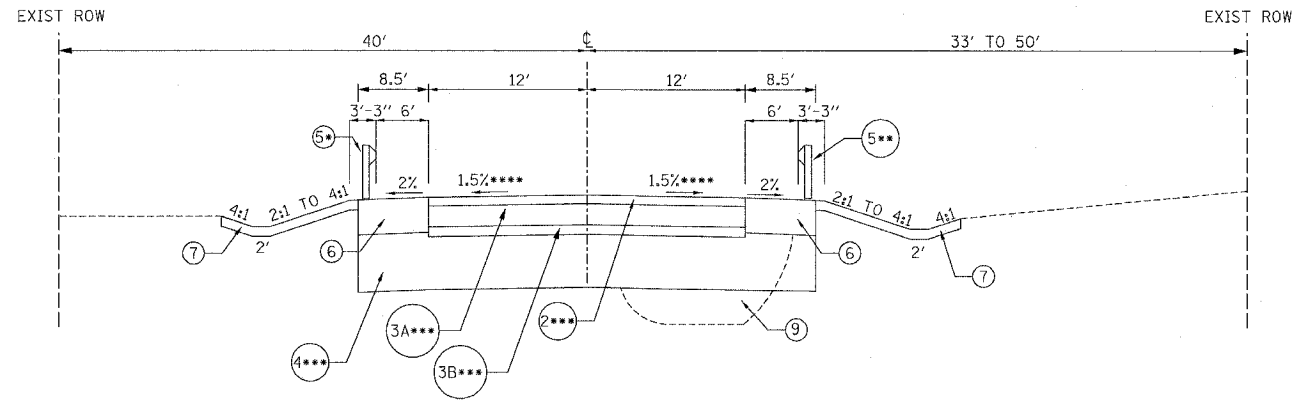
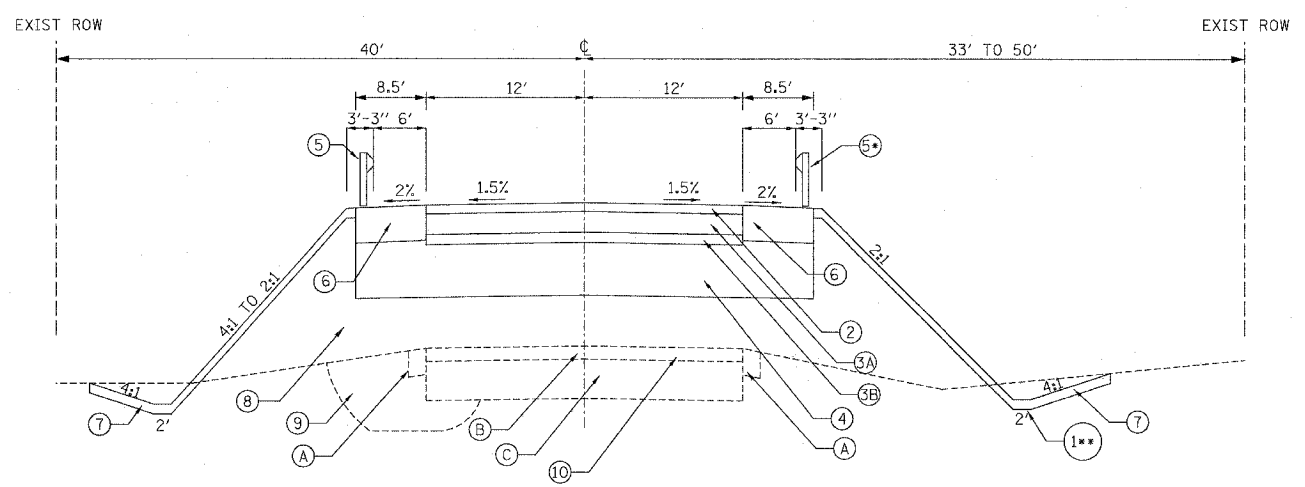


| | | | | |
|---------------------|----------|------------------|--------------|-----------|
| F.A.U. RTE. | SECTION | COUNTY | TOTAL SHEETS | SHEET NO. |
| 1602 | 74 B-1 | COOK | 34 | 5 |
| STA. 4+11.71 | | TO STA. 15+75.79 | | |
| FED. ROAD DIST. NO. | ILLINOIS | FED. AID PROJECT | | |
| CONTRACT NO. 62418 | | | | |



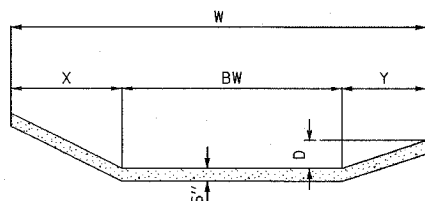
* STA 6+15 TO STA 8+06.49 AND STA 11+86.63 TO STA. 15+30
 ** STA 4+57.50 TO STA 8+06.49
 *** STA 6+20 TO STA 8+06.49 AND STA 11+86.63 TO STA 14+24.71
 **** PAVEMENT SLOPES SHALL BE ADJUSTED TO MATCH THE EXISTING PAVEMENT WITHIN 25' OF THE RECONSTRUCTION LIMITS OR AS DIRECTED BY THE ENGINEER.

PROPOSED SECTION
 STA 4+11.71 TO STA 8+06.49 AND STA 11+86.63 TO STA. 15+75.79



* STA 8+06.49 TO STA 11+78.98
 ** STA 10+16.70 TO STA 11+74.96

PROPOSED SECTION
 STA 8+06.49 TO STA 11+86.63



| STATION | D | W | X | Y | BW |
|-------------------|----|-------|-----|-------|-------|
| 10+16.43 TO 11+00 | 3" | 1'-5" | 5" | 8" | 4" |
| 11+00 TO 11+50 | 5" | 3'-8" | 11" | 1'-4" | 1'-6" |
| 11+50 TO 11+74.96 | 5" | 4'-1" | 10" | 1'-3" | 2' |

PAVED DITCH (SPECIAL)

STRUCTURAL PAVEMENT DESIGN

STRUCTURAL DESIGN TRAFFIC: Year 2016
 PV = 12,029 SU = 0 MU = 0
 ROAD/STREET CLASSIFICATION: Class 2
 PERCENT OF STRUCTURAL DESIGN TRAFFIC IN DESIGN LANE:
 P = 32 S = 45 M = 45
 TRAFFIC FACTOR: Actual TF = 0.01 AC Type = 10
 Minimum TF = 0.50
 PG GRADE: Binder = 7 Surface = 2
 SUBGRADE SUPPORT RATING:
 SSR = POOR

LEGEND - EXISTING

- (A) AGGREGATE SHOULDER, 6"
- (B) BITUMINOUS SURFACE COURSE, 3"
- (C) AGGREGATE BASE COURSE, 9"

LEGEND - PROPOSED

- (1) PAVED DITCH
- (2) BITUMINOUS CONCRETE SURFACE COURSE, SUPERPAVE, MIX "D", N70, 2"
- (3A) BITUMINOUS CONCRETE BINDER COURSE, SUPERPAVE, IL-19, N70, 4 3/4"
- (3B) BITUMINOUS CONCRETE BINDER COURSE, SUPERPAVE, IL-19, N50, 2 1/4"
- (4) AGGREGATE SUBGRADE, 12" (SEE GENERAL NOTE #7)
- (5) STEEL PLATE BEAM GUARDRAIL, TYPE A
- (6) BITUMINOUS SHOULDERS SUPERPAVE 8"
- (7) COMPOST FURNISH AND PLACE, 4"
- (8) FURNISHED EXCAVATION, VARIABLE DEPTH
- (9) POROUS GRANULAR EMBANKMENT, SUBGRADE (LOCATIONS TO BE DETERMINED BY THE ENGINEER)
- (10) PAVEMENT BREAKING

BITUMINOUS MIXTURE REQUIREMENT TABLE

| ITEM | AC TYPE | VOIDS | MAX RAP % |
|---|----------------|--------------|-----------|
| BITUMINOUS CONCRETE SURFACE COURSE, SUPERPAVE, MIX "D", N70 | PG 64-22 | 4% @ 70 GYR. | 10 |
| BITUMINOUS CONCRETE BINDER COURSE, SUPERPAVE, IL-19, N70 | PG 64-22/58-22 | 4% @ 70 GYR. | 15/25 |
| BITUMINOUS CONCRETE BINDER COURSE, SUPERPAVE, IL-19, N50 | PG 58-22 | 4% @ 50 GYR. | 25 |
| BITUMINOUS BASE COURSE, SUPERPAVE (6" OR 8" THICKNESS) | PG 58-22 | 2% @ 50 GYR. | 50 |
| BITUMINOUS CONCRETE SURFACE COURSE, SUPERPAVE, MIX "C", N50 | PG 64-22 | 4% @ 50 GYR. | 15 |
| BITUMINOUS SHOULDER, SUPERPAVE | PG 58-22 | 2% @ 30 GYR. | 50 |

THE UNIT WEIGHT USED FOR ALL BITUMINOUS SURFACE MIXTURES IS 112 LBS / SQ YD / IN

RHA&A
 Robert H. Anderson & Associates, Inc.
 Consulting Engineers
 Timbers Professional Center
 220 West River Drive, St. Charles, IL 60174
 Phone - 630.584.3530 Fax - 630.584.3047

| REVISIONS | |
|-----------|------|
| NAME | DATE |
| | |
| | |
| | |
| | |
| | |
| | |
| | |

ILLINOIS DEPARTMENT OF TRANSPORTATION
 147th STREET OVER BOCA RIO DITCH
 F.A.U. 1602, SECTION 74 B-1
 COOK COUNTY
 PROPOSED TYPICAL SECTIONS
 SCALE: VERT. NOT TO SCALE HORIZ. DATE: SEPTEMBER 2006 DRAWN BY: TC CHECKED BY: KMA

9/20/2006 H:\1 DOT\BRIDGE\124062\DESIGN\GN\11\8\05\PROPOSED TYPICAL.DGN