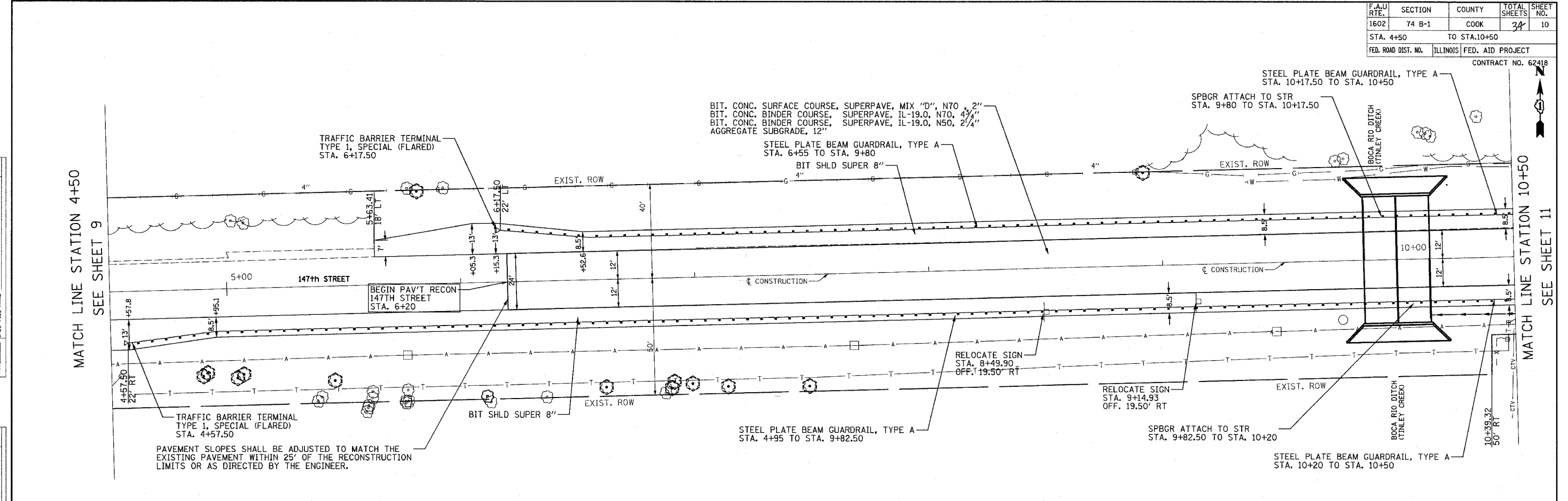


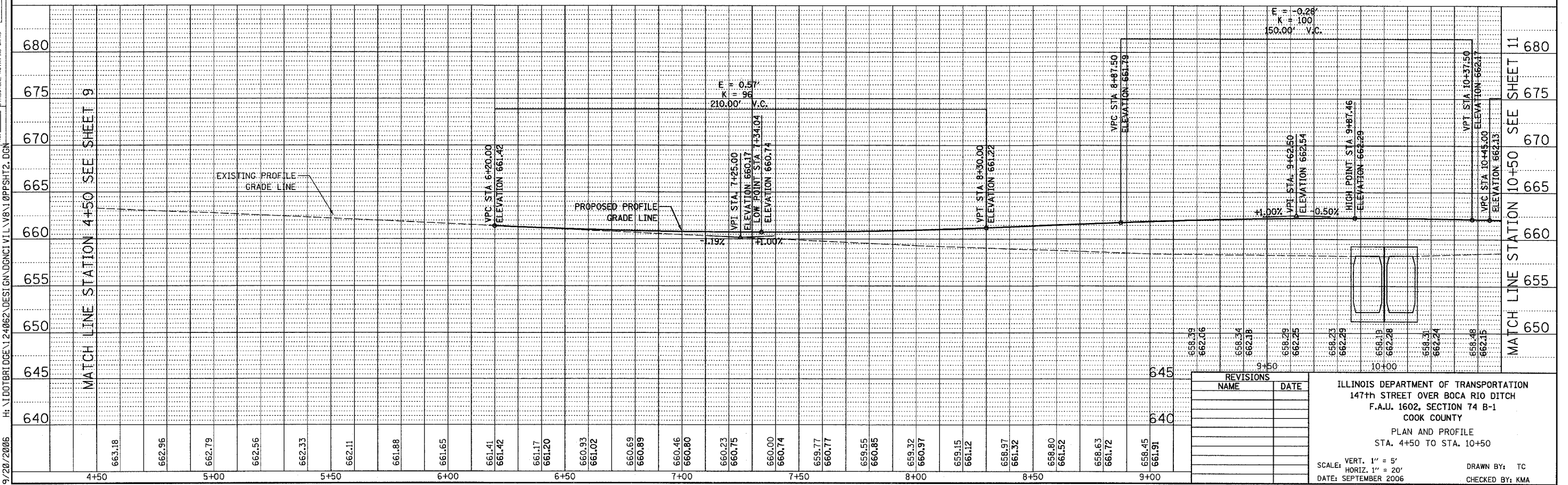
F.A.U. RTE.	SECTION	COUNTY	TOTAL SHEETS	SHEET NO.
1602	74 B-1	COOK	34	10
STA. 4+50		TO STA. 10+50		
FED. ROAD DIST. NO.		ILLINOIS FED. AID PROJECT		CONTRACT NO. 62418

PLAN	DATE	BY
REVISIONS		
NO.	DESCRIPTION	
1	AS SHOWN	

PROFILE	DATE	BY
REVISIONS		
NO.	DESCRIPTION	
1	AS SHOWN	



PAVEMENT SLOPES SHALL BE ADJUSTED TO MATCH THE EXISTING PAVEMENT WITHIN 25' OF THE RECONSTRUCTION LIMITS OR AS DIRECTED BY THE ENGINEER.



REVISIONS	NAME	DATE

ILLINOIS DEPARTMENT OF TRANSPORTATION
 147th STREET OVER BOCA RIO DITCH
 F.A.U. 1602, SECTION 74 B-1
 COOK COUNTY
 PLAN AND PROFILE
 STA. 4+50 TO STA. 10+50
 SCALE: VERT. 1" = 5'
 HORIZ. 1" = 20'
 DATE: SEPTEMBER 2006
 DRAWN BY: TC
 CHECKED BY: KMA

9/20/2006

9-25-06