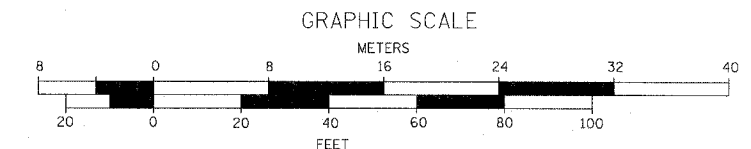
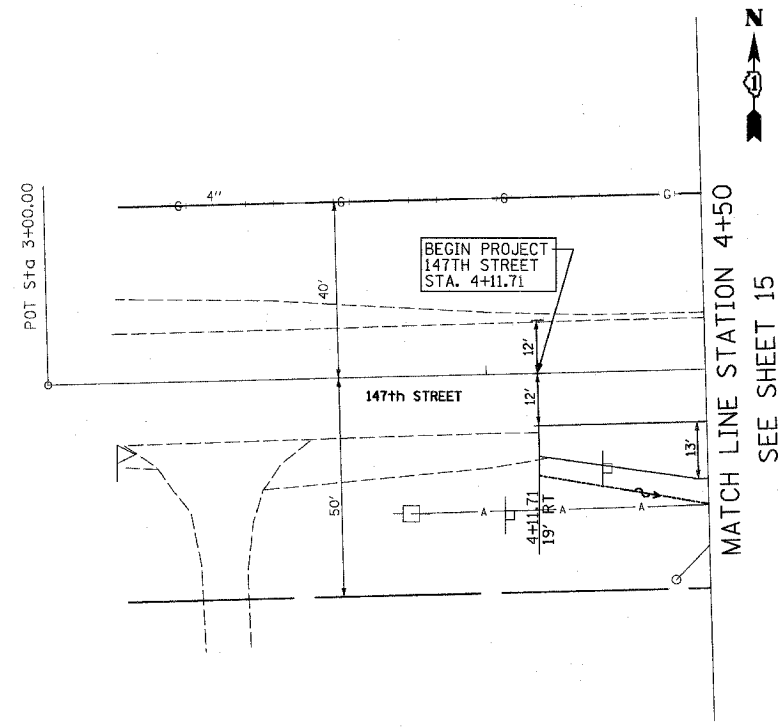


F.A.U. RTE.	SECTION	COUNTY	TOTAL SHEETS	SHEET NO.
1602	74 B-1	COOK	34	14
STA. 4+11.71		TO STA. 4+50		
FED. ROAD DIST. NO.	ILLINOIS	FED. AID PROJECT		CONTRACT NO. 62418

LEGEND FOR EXISTING AND PROPOSED DRAINAGE SYMBOLS

	Existing	Proposed
Ditch		
Channel		
Culvert Size - Type		
Bridge Location - Bridge No.		
Pump Sta. Location - Pump Sta. No.		
Storm Sewer		
Sanitary Sewer		
Culvert End Section		
Catch Basin		
Headwall / Endwall		
Inlet		
Manhole		

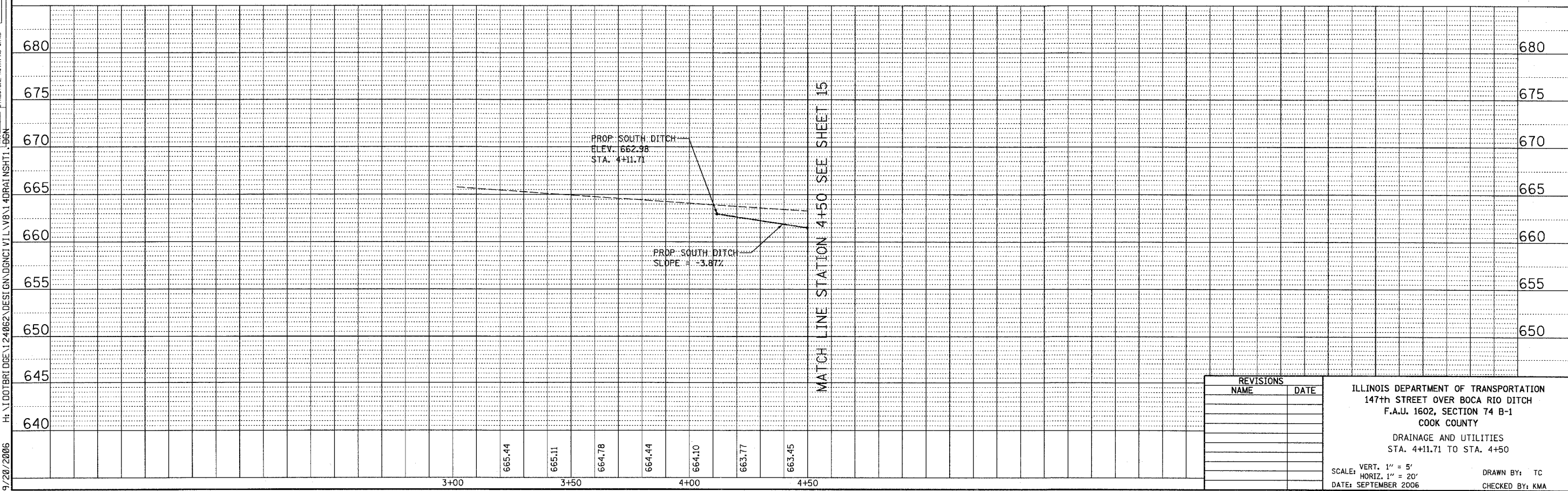


PLAN

BY	DATE
DESIGNED	
PLOTTED	
CHECKED	
ALIGNED	
REVISIONS	
NO.	
DATE	

PROFILE

BY	DATE
DESIGNED	
PLOTTED	
CHECKED	
STRUCTURE	
NOTATION	
NO.	
DATE	



H:\DOT\BRI\DOE\124062\DESI\GN\GN\NCI\VL\WB\14\DR\AI\NSH\TI_196N

REVISIONS

NAME	DATE

ILLINOIS DEPARTMENT OF TRANSPORTATION
147th STREET OVER BOCA RIO DITCH
F.A.U. 1602, SECTION 74 B-1
COOK COUNTY

DRAINAGE AND UTILITIES
STA. 4+11.71 TO STA. 4+50

SCALE: VERT. 1" = 5'
HORIZ. 1" = 20'
DATE: SEPTEMBER 2006

DRAWN BY: TC
CHECKED BY: KMA

9-2506