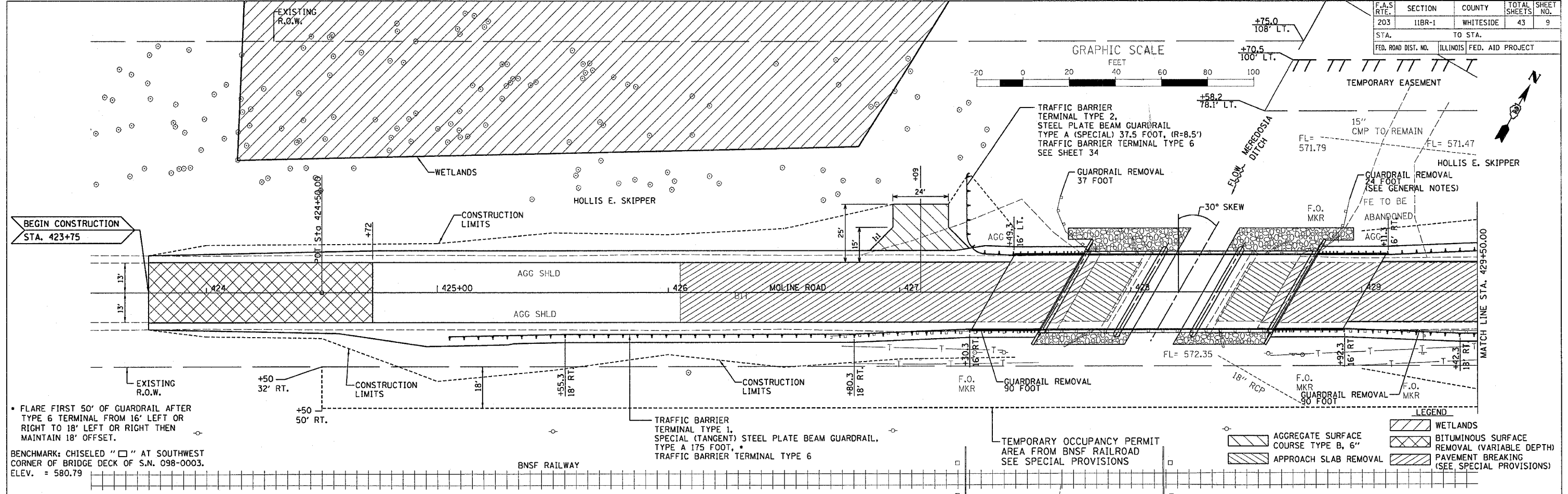
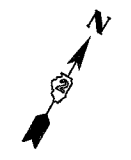


F.A.S. RTE.	SECTION	COUNTY	TOTAL SHEETS	SHEET NO.
203	11BR-1	WHITESIDE	43	9
STA. TO STA.		ILLINOIS FED. AID PROJECT		
FED. ROAD DIST. NO.				

GRAPHIC SCALE



TEMPORARY EASEMENT



• FLARE FIRST 50' OF GUARDRAIL AFTER TYPE 6 TERMINAL FROM 16' LEFT OR RIGHT TO 18' LEFT OR RIGHT THEN MAINTAIN 18' OFFSET.

BENCHMARK: CHISELED "□" AT SOUTHWEST CORNER OF BRIDGE DECK OF S.N. 098-0003. ELEV. = 580.79

TRAFFIC BARRIER TERMINAL TYPE 1, SPECIAL (TANGENT) STEEL PLATE BEAM GUARDRAIL, TYPE A 175 FOOT, \*  
TRAFFIC BARRIER TERMINAL TYPE 6

TEMPORARY OCCUPANCY PERMIT AREA FROM BNSF RAILROAD SEE SPECIAL PROVISIONS

LEGEND

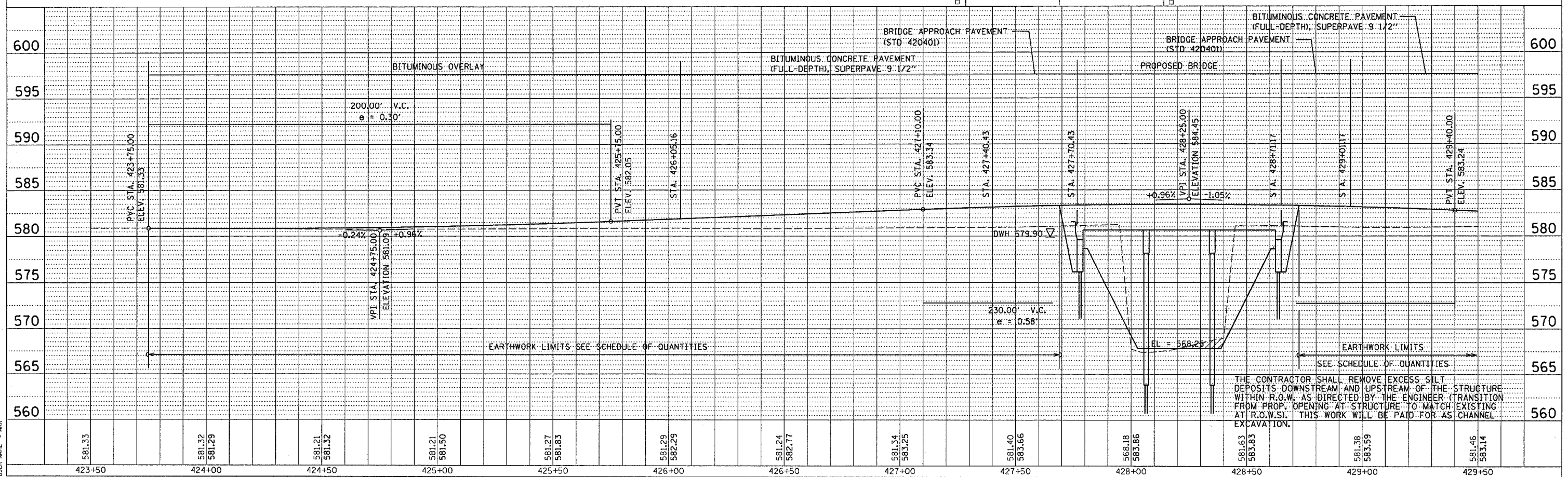
	WETLANDS		BITUMINOUS SURFACE REMOVAL (VARIABLE DEPTH)
	AGGREGATE SURFACE COURSE TYPE B, 6"		PAVEMENT BREAKING (SEE SPECIAL PROVISIONS)
	APPROACH SLAB REMOVAL		

PLAN

NO.	DATE	BY

PROFILE

NO.	DATE	BY



THE CONTRACTOR SHALL REMOVE EXCESS SILT DEPOSITS DOWNSTREAM AND UPSTREAM OF THE STRUCTURE WITHIN R.O.W. AS DIRECTED BY THE ENGINEER (TRANSITION FROM PROP. OPENING AT STRUCTURE TO MATCH EXISTING AT R.O.W.S.). THIS WORK WILL BE PAID FOR AS CHANNEL EXCAVATION.

PLOT DATE = 8/1/08  
FILE NAME = 8/1/08  
PLOT SCALE = 20  
USER NAME = ARR