

Existing Structure: SN 098-0003 to be removed. Originally built in 1924 as Route SB13 Section 11 B. Single span, prestressed concrete box beam with closed abutments on pile supported footings. 47'-4" Bk. to Bk. abutments. Superstructure was replaced and widened in 1971.

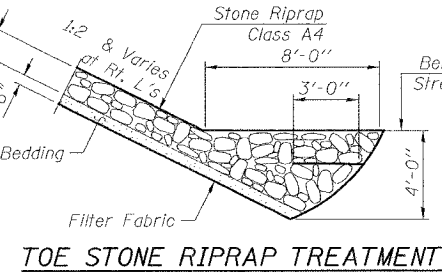
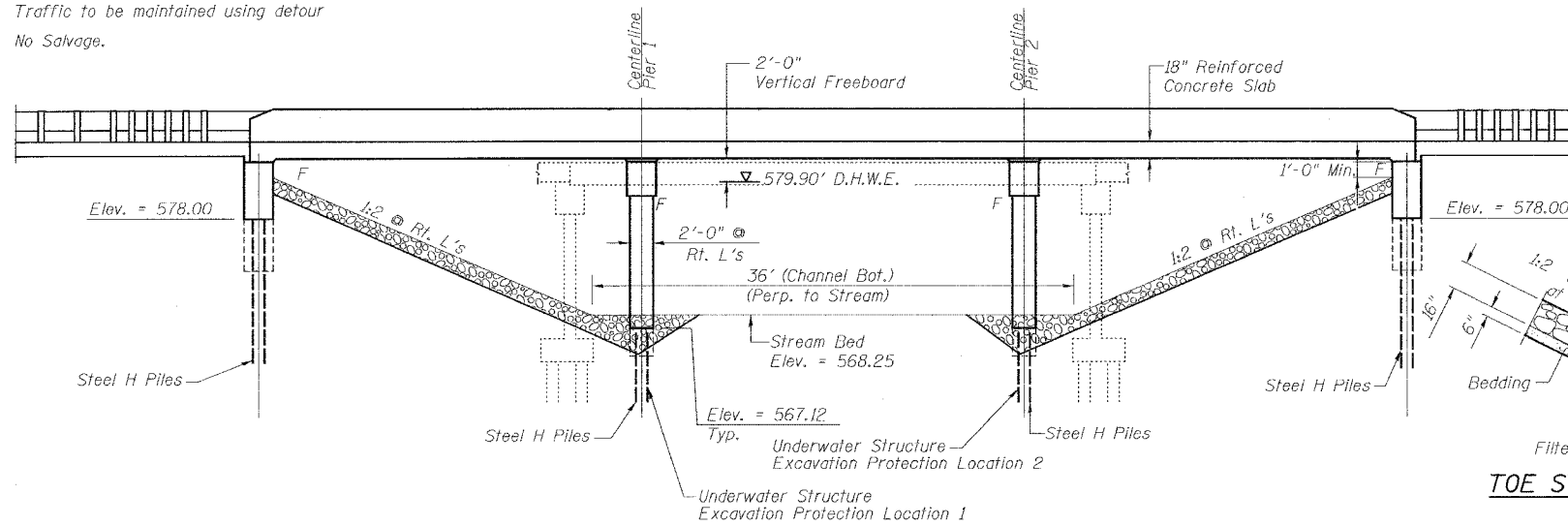
Benchmark: Chiseled "□" at Southwest Corner of Bridge Deck of S.N. 098-0003. Elev. = 580.79

STATE OF ILLINOIS
DEPARTMENT OF TRANSPORTATION

SHEET #1 OF 11 SHEETS		ROUTE NO.	SECTION	COUNTY	STATE SHEET	SHEET
FAS 203	11BR-1	WHITESIDE	43	12		
FED. ROAD DIST. NO. 3		ILLINOIS	FED. AID PROJECT-			
CONTRACT #84939						

Contractor shall remove existing structure as required and replace with a 3 span reinforced concrete slab bridge on pile bent piers and integral abutments.

Traffic to be maintained using detour
No Salvage.



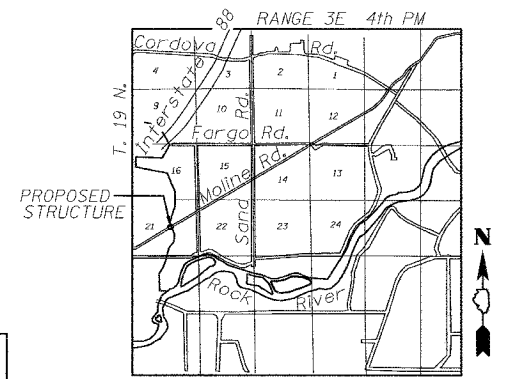
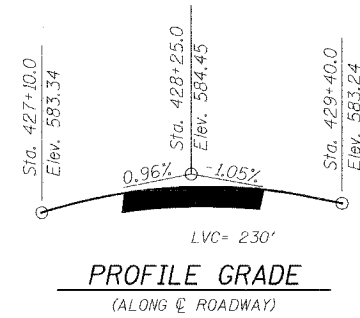
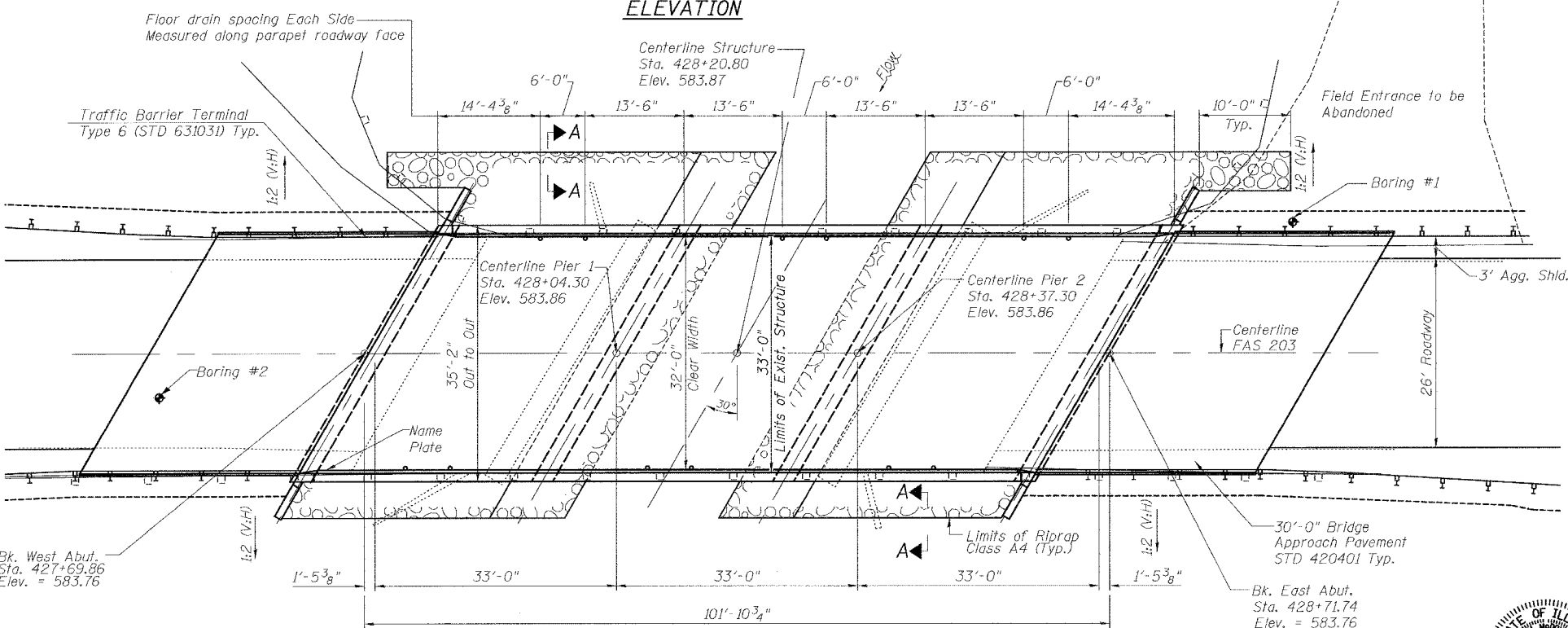
- INDEX OF SHEETS**
1. GENERAL PLAN AND ELEVATION
 2. FOUNDATION PLAN
 3. DECK ELEVATIONS
 4. SUPERSTRUCTURE PLAN
 5. SUPERSTRUCTURE DETAILS
 6. SUPERSTRUCTURE DETAILS
 7. PILE BENT ABUTMENT
 8. PILE BENT PIER
 9. BAR SPLICER DETAILS
 10. BORING LOGS
 11. BORING LOGS

WATERWAY INFORMATION

DRAINAGE AREA = 90.4 SQ. MI. LOW GRADE ELEV. = 581.2 (Exist./Prop.) @ Sta. 424+50

Flood	FREQ. YR.	Q C.F.S.	OPENING SQ. FT.		HEAD - FT.		HEADWATER EL.		
			EXIST.	PROP.	H.W.E.	EXIST. PROP.	EXIST.	PROP.	
	10	1635	360	517	578.2	0.2	0.4	578.4	578.6
Design	50	2247	410	646	579.9	0.7	0.4	580.6	580.3
Overtop (E)	90	2400	410	-	580.3	0.9	-	581.2	-
Base	100	2482	410	685	580.4	1.0	0.5	581.4	580.9
Overtop (P)	250	2700	-	717	580.8	-	0.4	-	581.2
Max. Calc.	500	3016	410	772	581.5	1.3	0.3	582.8	581.8

10 year velocity through existing bridge = 4.5 fps
10 year velocity through prop. bridge = 3.2 fps



STATION 428+20.80
BUILT 200 BY
STATE OF ILLINOIS
F.A. RT. 203 SEC. 11BR-1
LOADING HS20
STR. NO. 098-0111

NAME PLATE
Locate Name Plate at Southwest Corner of Bridge See Std. 515001

APPROVED
FOR STRUCTURAL ADEQUACY ONLY

2002 AASHTO
DESIGN STRESSES
FIELD UNITS
f'c = 3,500 psi
fy = 60,000 psi (Reinforcement)

SEISMIC DATA
S.P.C. A
A = 0.04
S = 1.0

Toni M. McDonough
License Expires 11/30/06

DESIGNED	KCM
CHECKED	TMM
DRAWN	JLM
CHECKED	TMM

LOADING HS20-44
Allow 50#/sq. ft. for future wearing surface