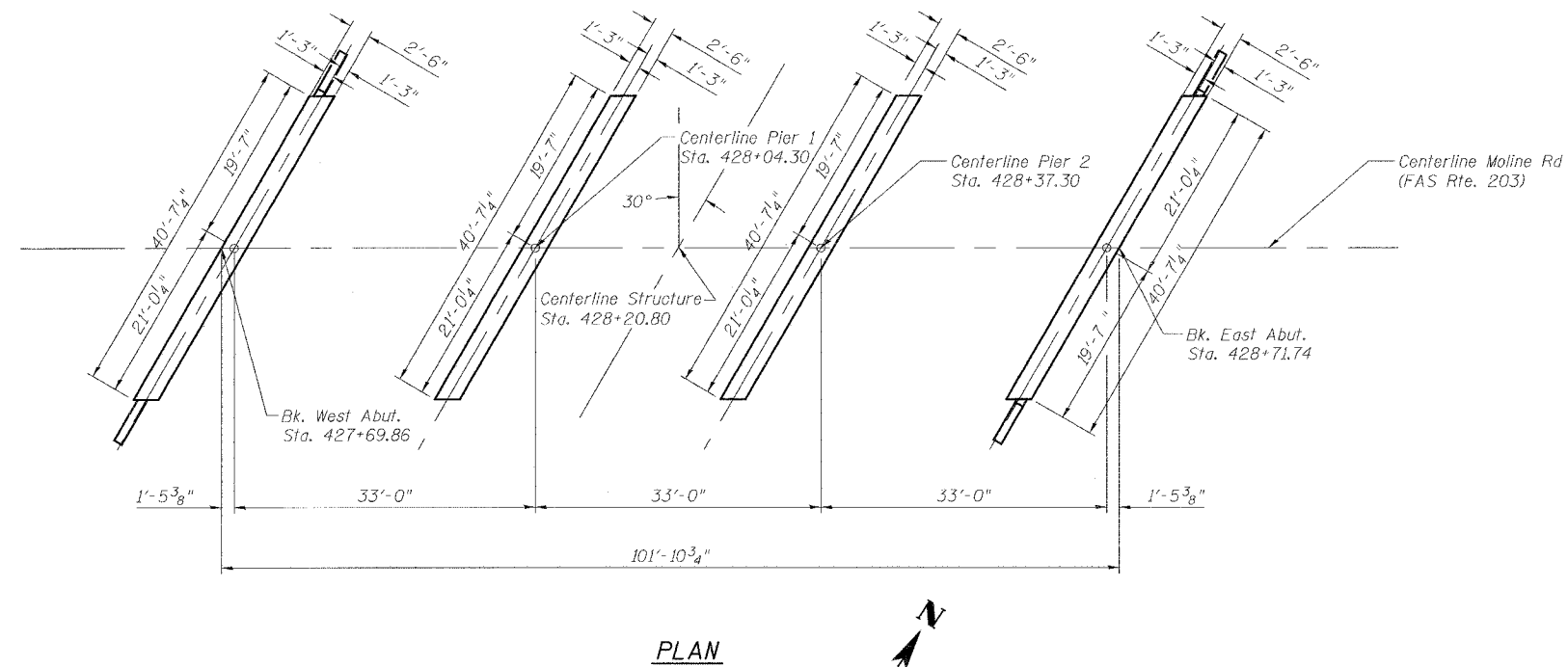


STATE OF ILLINOIS  
DEPARTMENT OF TRANSPORTATION

SHEET #2 OF 11 SHEETS		ROUTE NO.	SECTION	COUNTY	SHEETS	DATE
		FAS 203	11BR-1	WHITESIDE	43	13
		FED. ROAD DIST. NO. 3	ILLINOIS	FED. AID PROJECT-		
CONTRACT #64939						

**GENERAL NOTES**

- The Contractor shall drive 2 test piles, as specified, in permanent locations. 1 HP 8x36 in the West Abutment and 1 HP 12x53 in pier 1, as directed by the Engineer before ordering the remaining piles.
- Layout of the slope protection system may be varied in the field to suit ground conditions as directed by the Engineer.
- Reinforcement bars shall conform to the requirements of AASHTO M31, or M322 Grade 60.
- The Contractor shall make allowance for the deflection of forms, shrinkage and settlement of falsework, in addition to allowance for dead load deflection.
- All construction joints shall be bonded.
- The aggregate material for Pipe Underdrain for Structures shall be CA 7.



**TOTAL BILL OF MATERIAL**

Item	Unit	Super	Sub.		Total
			Piers	Abuts.	
Porous Granular Embankment, (Special)	Cu. Yd.	--	--	66	66
Stone Riprap, Class A4	Sq. Yd.	--	--	--	438
Filter Fabric	Sq. Yd.	--	--	--	438
Removal of Existing Structures	Each	--	--	--	1
Structure Excavation	Cu. Yd.	--	19	91	110
Floor Drains	Each	12	--	--	12
Concrete Structures	Cu. Yd.	--	88.6	29.4	118.0
Concrete Superstructure	Cu. Yd.	228.8	--	--	228.8
Bridge Deck Grooving	Sq. Yd.	336	--	--	336
Protective Coat	Sq. Yd.	451	--	--	451
Reinforcement Bars, Epoxy Coated	Pound	37,480	6,960	3,220	47,660
Furnishing Steel Piles HP8x36	Foot	--	--	551	551
Furnishing Steel Piles HP12x53	Foot	--	537	--	537
Driving Steel Piles	Foot	--	537	551	1088
Test Pile Steel HP8X36	Each	--	--	1	1
Test Pile Steel HP12X53	Each	--	1	--	1
Metal Shoes	Each	--	11	11	22
Name Plates	Each	1	--	--	1
Geocomposite Wall Drain	Sq. Yd.	--	--	36	36
Pipe Underdrains for Structures 4"	Foot	--	--	101	101
Underwater Structure Excavation Protection -Location 1	Each	--	1	--	1
Underwater Structure Excavation Protection -Location 2	Each	--	1	--	1
Bar Splicers	Each	66	--	--	66

DESIGNED	KCM
CHECKED	TMM
DRAWN	JLM
CHECKED	TMM

FOUNDATION PLAN  
FAS ROUTE 203 (MOLINE ROAD)  
OVER MEREDOSIA DITCH  
SECTION 11BR-1  
STA. 428+20.80  
WHITESIDE COUNTY  
SN 098-0111