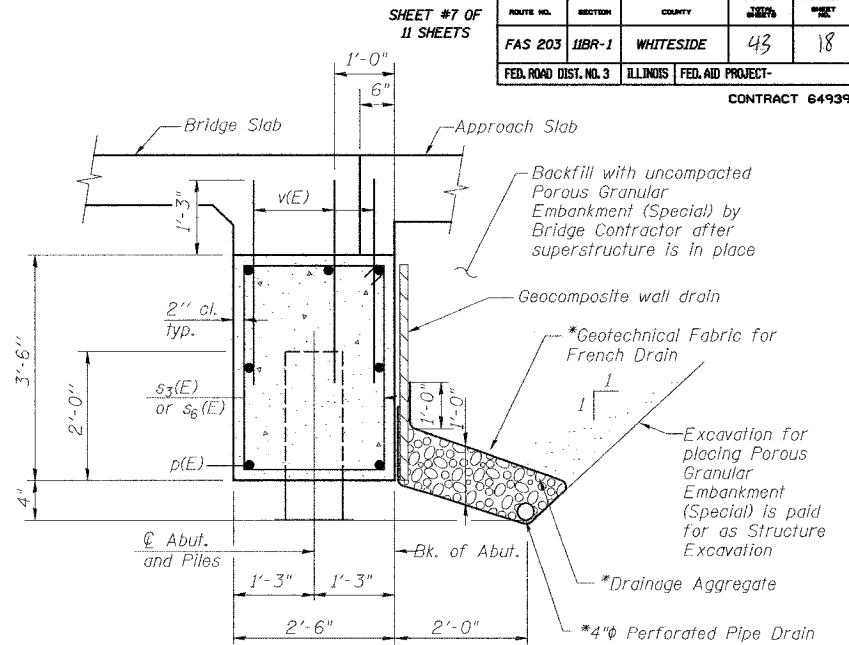
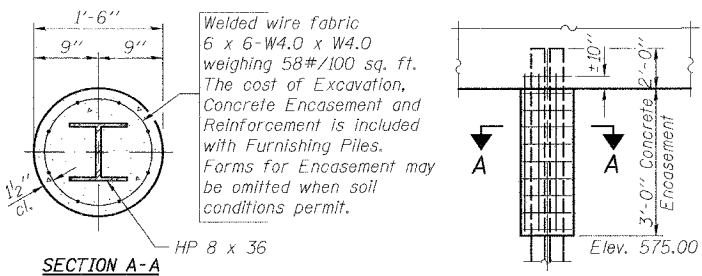
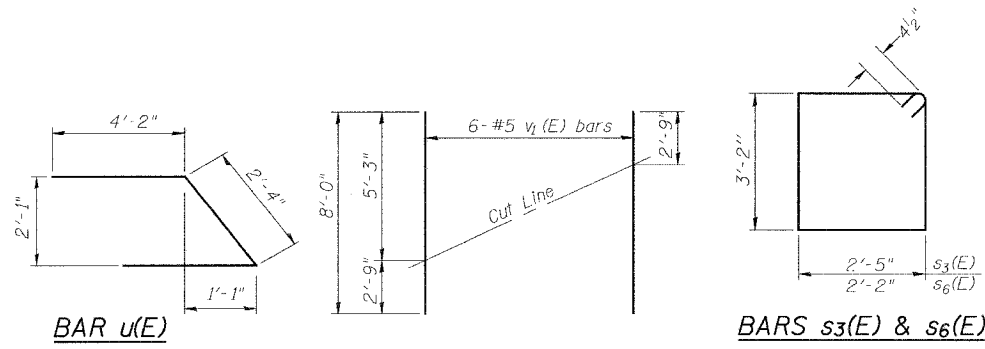
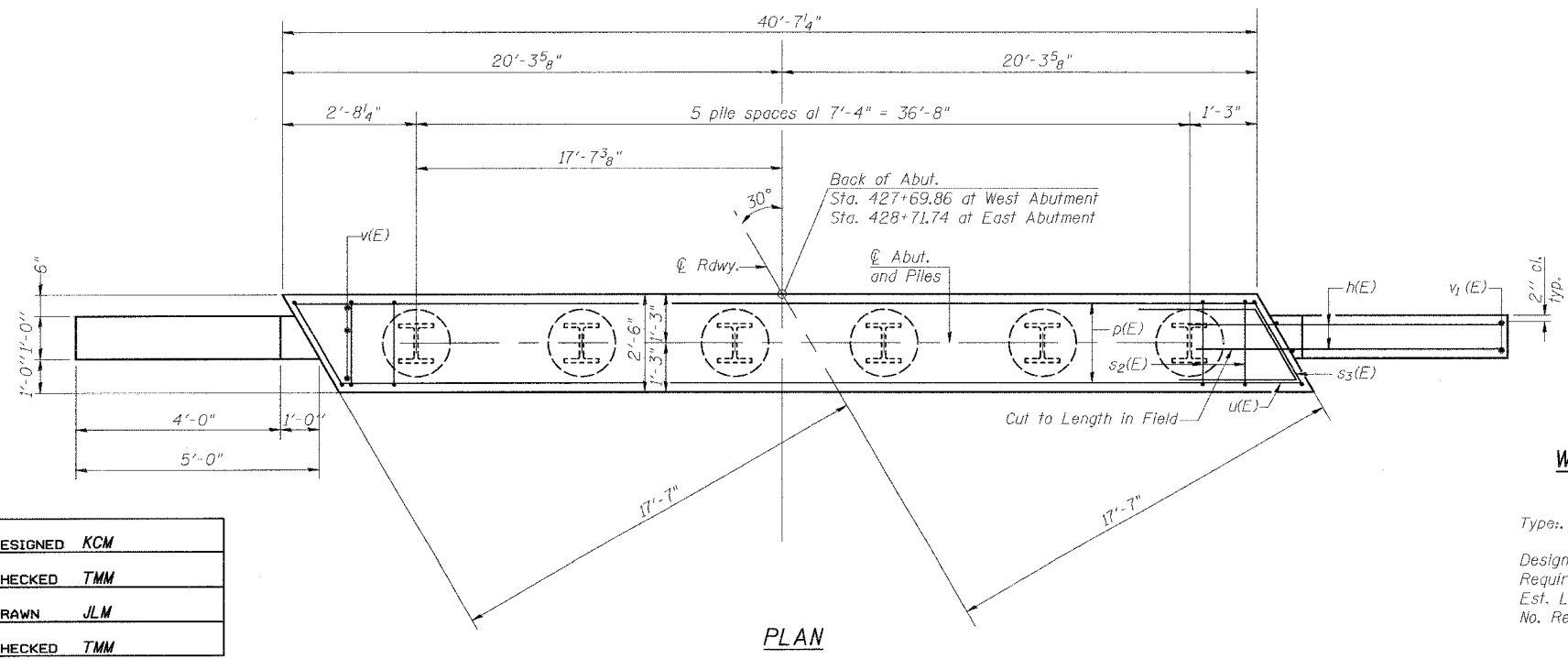
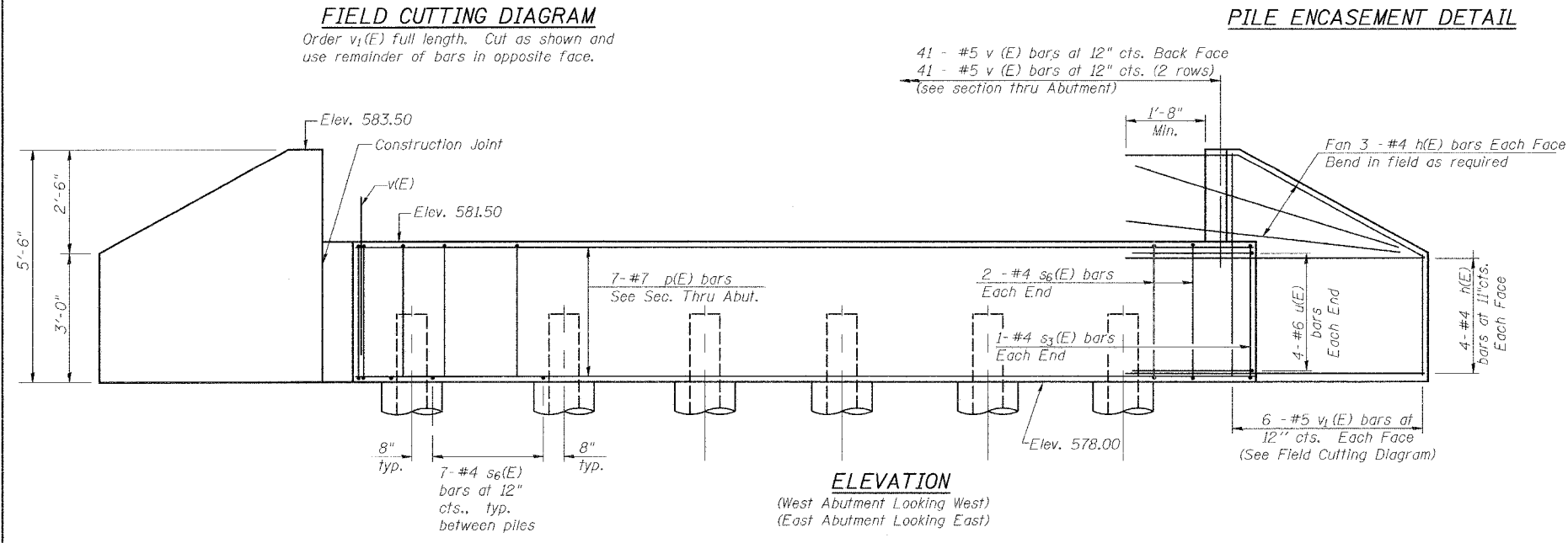


STATE OF ILLINOIS
DEPARTMENT OF TRANSPORTATION

SHEET #7 OF 11 SHEETS		ROUTE NO.	SECTION	COUNTY	DATE	REV.
		FAS 203	11BR-1	WHITESIDE	4/3	18
		FED. ROAD DIST. NO. 3	ILLINOIS	FED. AID PROJECT-		
CONTRACT 64939						



All drainage system components shall extend to 2'-0" from the end of each wingwall except an outlet pipe shall extend until intersecting with the side slopes. The pipes shall drain into concrete headwalls. (See Article 601.05 of the Standard Specifications and Highway Standard 601101)



DESIGNED	KCM
CHECKED	TMM
DRAWN	JLM
CHECKED	TMM

BILL OF MATERIAL FOR WEST ABUTMENT

Bar	No.	Size	Length	Shape
$h(E)$	28	#4	7'-5"	—
$p(E)$	7	#7	40'-3"	—
$s_3(E)$	2	#4	11'-11"	□
$s_6(E)$	39	#4	11'-5"	□
$u(E)$	8	#6	10'-8"	△
$v(E)$	119	#5	2'-9"	—
$v_1(E)$	12	#5	8'-0"	—
Structure Excavation	Cu. Yd.	45.5		
Concrete Structures	Cu. Yd.	14.7		
Reinforcement Bars, Epoxy Coated	Pound	1610		
Furnishing Steel Piles HP 8x36	Foot	365		
Driving Steel Piles	Foot	365		
Test Pile Steel HP 8x36	Each	1		
Metal Shoes	Each	5		

Reinforcement Bars designated (E) shall be epoxy coated.

BILL OF MATERIAL FOR EAST ABUTMENT

Bar	No.	Size	Length	Shape
$h(E)$	28	#4	7'-5"	—
$p(E)$	7	#7	40'-3"	—
$s_3(E)$	2	#4	11'-11"	□
$s_6(E)$	39	#4	11'-5"	□
$u(E)$	8	#6	10'-8"	△
$v(E)$	119	#5	2'-9"	—
$v_1(E)$	12	#5	8'-0"	—
Structure Excavation	Cu. Yd.	45.5		
Concrete Structures	Cu. Yd.	14.7		
Reinforcement Bars, Epoxy Coated	Pound	1610		
Furnishing Steel Piles HP 8x36	Foot	186		
Driving Steel Piles	Foot	186		
Metal Shoes	Each	6		

Reinforcement Bars designated (E) shall be epoxy coated.

WEST ABUTMENT PILE DATA

Type: HP 8 x 36 w/ Metal Shoes
Design Capacity: 46 Tons
Required Bearing: Driven to Refusal
Est. Length: 73 ft.
No. Required: 5 + 1 Test Pile

EAST ABUTMENT PILE DATA

Type: HP 8 x 36 w/ Metal Shoes
Design Capacity: 46 Tons
Required Bearing: Driven to Refusal
Est. Length: 31 ft.
No. Required: 6

PILE BENT ABUTMENT
FAS ROUTE 203 (MOLINE ROAD)
OVER MEREDOSIA DITCH
SECTION 11BR-1
STA. 428+20.80
WHITESIDE COUNTY
SN 098-0111