

STATE OF ILLINOIS
 DEPARTMENT OF PUBLIC WORKS AND BUILDINGS
 DIVISION OF HIGHWAYS
**PLANS FOR PROPOSED
 STATE BOND ISSUE HIGHWAY**

INDEX OF SHEETS

- 1 TITLE SHEET
- 2 TYPICAL SECTIONS, SUMMARY OF QUANTITIES, GENERAL NOTES & SCHEDULE OF QUANTITIES
- 3 PLAN & PROFILE
- 4 GENERAL PLAN & ELEVATION
- 5 APPROACH DETAILS
- 6 SUPER STRUCTURE
- 7 TYPE W STEEL RAILING
- 8 ABUTMENTS
- 9 CROSS SECTIONS (TEMPORARY RUNAROUND)

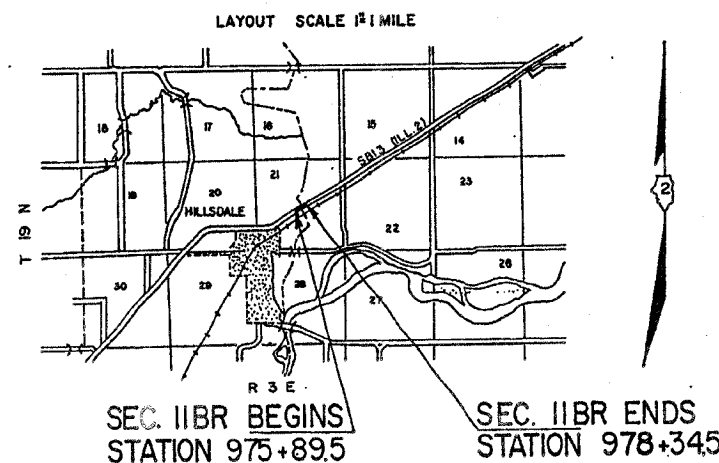
SCALES

PLAN	1 INCH	50 FT.
PROFILE, HOR.	1 INCH	50 FT.
PROFILE, VERT.	1 INCH	10 FT.
CROSS-SECTIONS	1 INCH	5 FT.

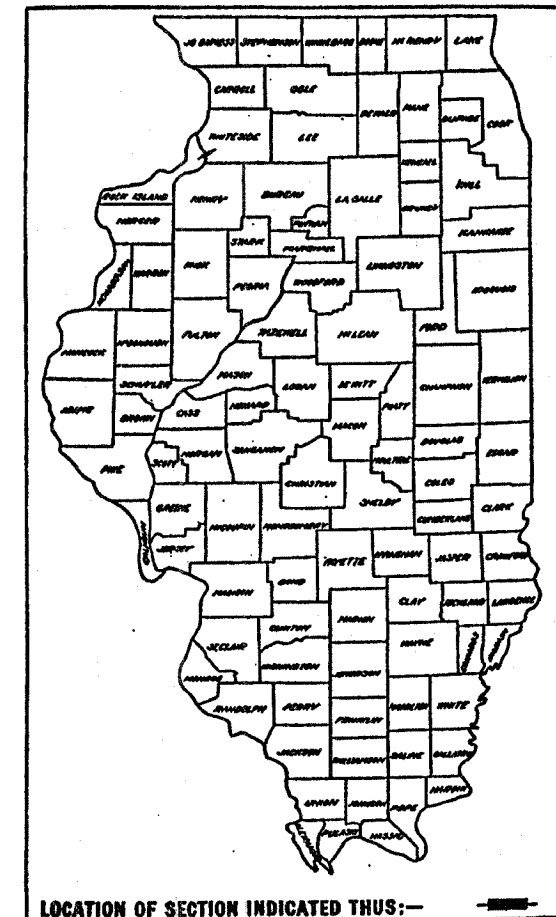
SBI ROUTE 3
 SEC II BR
 WHITESIDE COUNTY

- STD. 2115-3 PAVEMENT FABRIC
- STD. 2230-3 STEEL PLATE BEAM GUARD RAIL
- STD. 2231-3 TYPICAL APPLICATION OF STEEL PLATE BEAM GUARD RAIL
- STD. 2298-1 APPLICATION OF TRAFFIC CONTROL DEVICES
- STD. 2299-1 DESIGN OF TRAFFIC CONTROL DEVICES
- STD. 2300 FLAGMAN TRAFFIC CONTROL SIGN
- STD. 2303-1 APPLICATION OF TRAFFIC CONTROL DEVICES
- STD. 2310-1 APPLICATION OF TRAFFIC CONTROL DEVICES
- STD. 2239-3 BITUMINOUS SHOULDER

ABOVE STANDARDS ARE INCLUDED AFTER SHEET 32 OF SET 4



GROSS LENGTH OF SECTION 245.0 FT.=.046 MILES
 NET LENGTH OF SECTION 245.0 FT.=.046 MILES



SECTION II BR INCLUDES THE REMOVAL OF THE EXISTING SUPERSTRUCTURE AND PORTIONS OF THE SUBSTRUCTURE AND REPLACEMENT WITH A PRECAST PRESTRESSED DECK BEAM BRIDGE OVER MEREDOSIA SLOUGH. ALSO INCLUDED IS CONSTRUCTION OF A TEMPORARY BRIDGE AND RUNAROUND AND ALL OTHER WORK THAT IS NECESSARY TO COMPLETE THE SECTION.

STATE OF ILLINOIS
 DEPARTMENT OF PUBLIC WORKS AND BUILDINGS
 DIVISION OF HIGHWAYS

SUBMITTED March 30, 1970

EXAMINED March 16, 1970

PASSED March 25, 1970

APPROVED March 25, 1970

APPROVED March 25, 1970

DIRECTOR