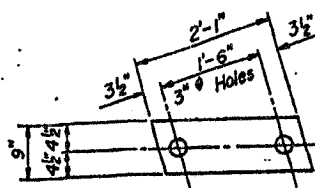
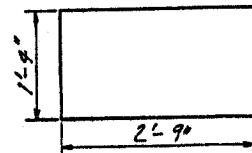


STATE OF ILLINOIS
DEPARTMENT OF PUBLIC WORKS & BUILDINGS
DIVISION OF HIGHWAYS

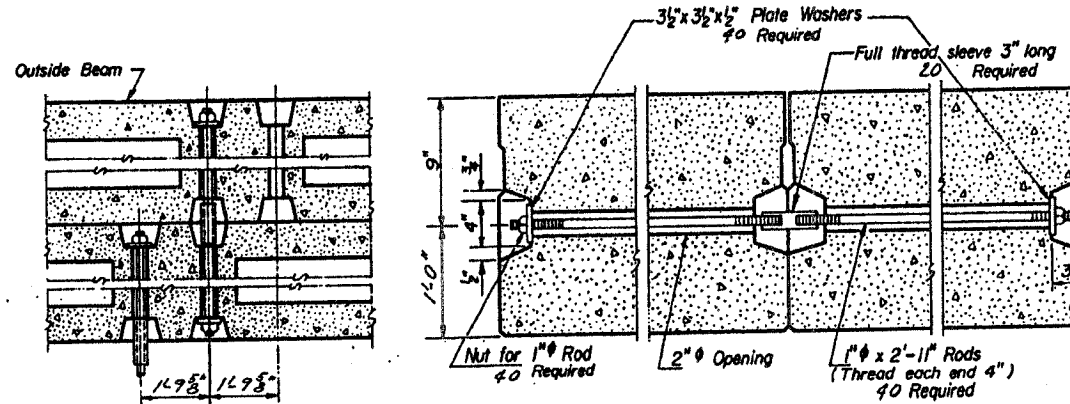
FOR INFORMATION ONLY



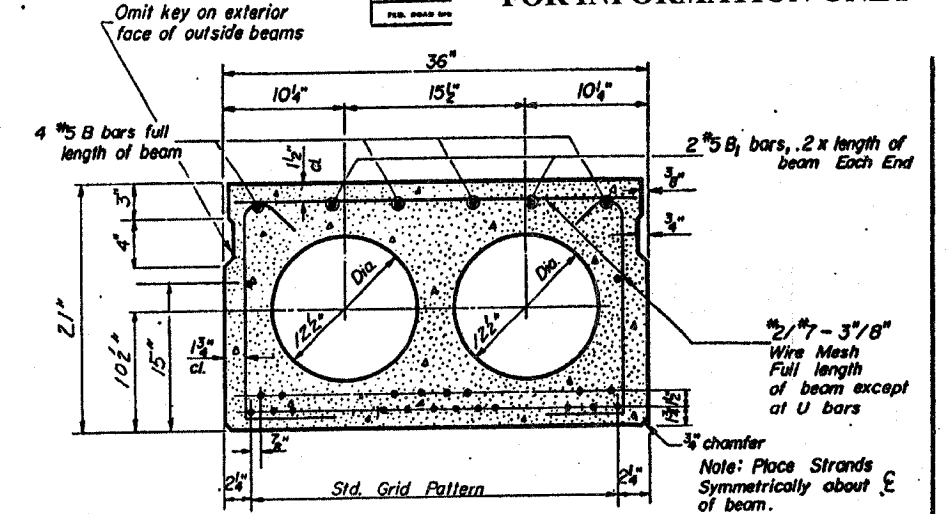
FABRIC BEARING PAD



U BAR

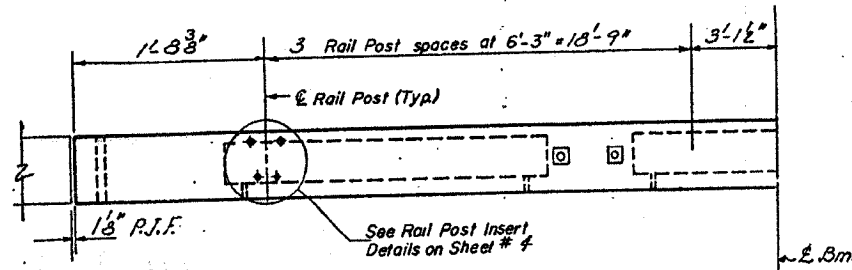


TYPICAL TRANSVERSE TIE ASSEMBLY

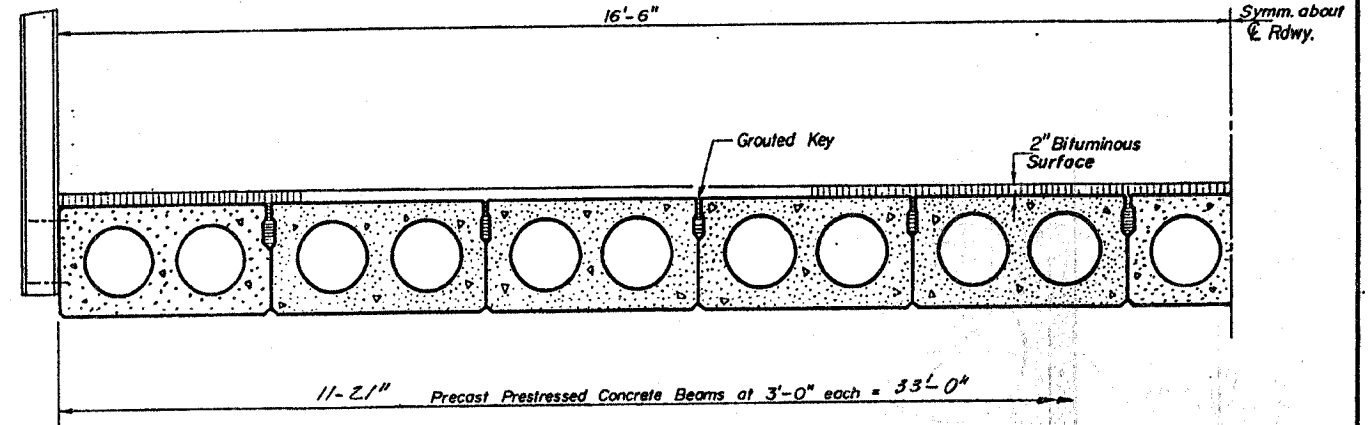


TYPICAL SECTION

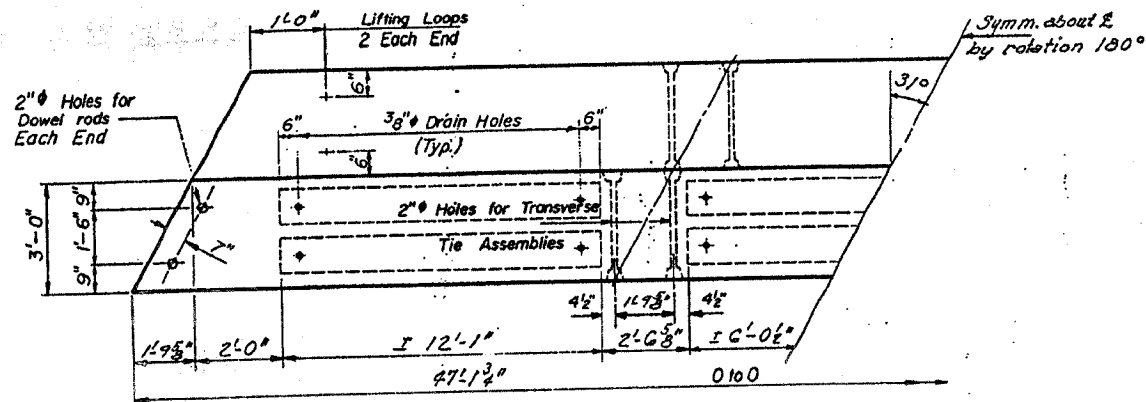
7/16" Strands Each Strand Stressed to 18,900 lbs.
12 Strands 1 3/4" up, 8 Strands 3 1/4" up, 2 Strands 15" up



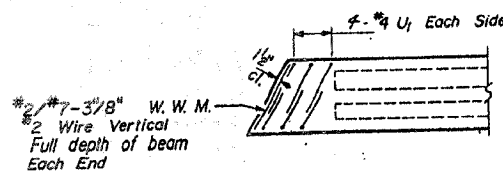
ELEVATION



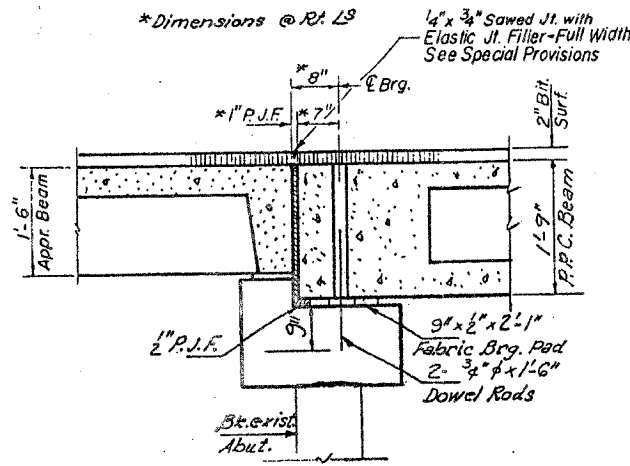
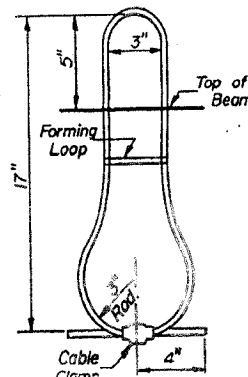
HALF CROSS SECTION



PARTIAL PLAN



END PLAN



*Dimensions @ Rt. L's
1/4" x 3/4" Sawed Jt. with Elastic Jt. Filler-Full Width See Special Provisions

GENERAL NOTES

Prestressing steel shall be non-galvanized high strength, stress-relieved 7-wire strand. The nominal diameter shall be 7/16" and the nominal cross-sectional area shall be 0.109 sq. in.. Lifting loops shall be 5/8" diameter, 6x19 class wire rope with fiber core and shall have a minimum ultimate tensile strength of 27,000 lbs. The 1" rods in the transverse tie assembly shall be tightened to a snug fit and the threads set. Pockets that receive transverse tie bar on outside beam shall be filled with grout after transverse tie assembly is in place. Longitudinal shear keys shall be packed with a very dry mix of 2:1 sand and P.C. mortar. After beams have been erected, holes for dowel anchors shall be drilled into sub-structure. Grout dowels at fixed end. An expansion end grout dowels into sub-structure & fill holes in beam with P.A.F.-4. Steel for dowel rods, transverse tie rods, and armor angles shall be S.A.E. 1020, or ASTM A-306 Grade 70-80. After fabrication the transverse tie assemblies (tie rods, nuts, washers and sleeves) shall be hot-dipped galvanized in accordance with A.S.T.M. Designation A153. Cost of reinforcement and accessories cast into the beam, of bearing pads, of armor angles, and of grouting longitudinal shear keys is included in unit price bid for "Precast Prestressed Concrete Deck Beams."

BILL OF MATERIAL

Item	Unit	Quantity
Precast Prestressed Concrete Deck Beams 2 1/2"	Sq. Ft.	1556
Removal of Existing Superstructure	Each	1

SUPERSTRUCTURE
S.B.I.R.T. 3 SEC. 11 BR
WHITESIDE COUNTY
STA. 977+12

DESIGNED: Simon Ustank
CHECKED: James Ponce
DRAWN: JAMES R. CARMAN
EXAMINED: [Signature]
PASSED: [Signature]
FEB. 26 1970