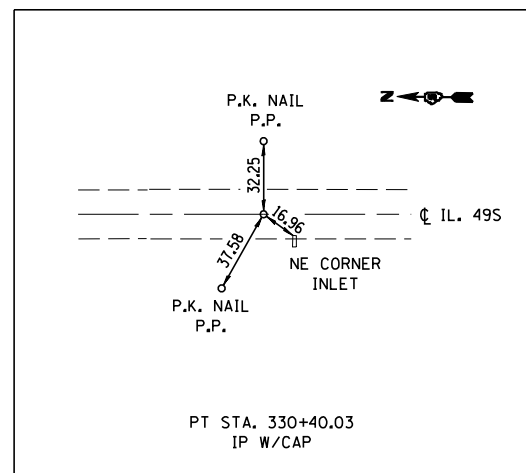
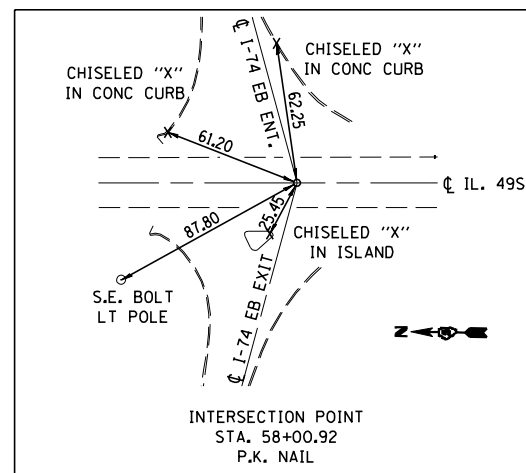
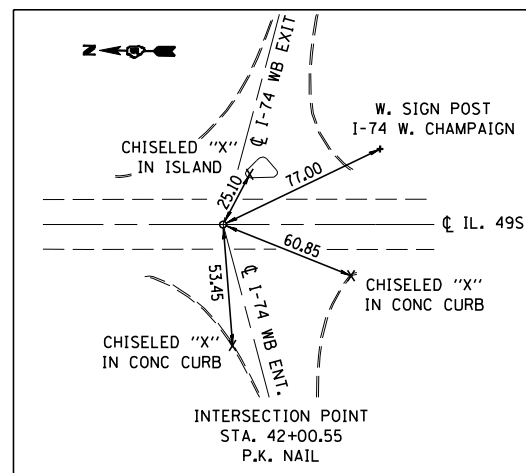
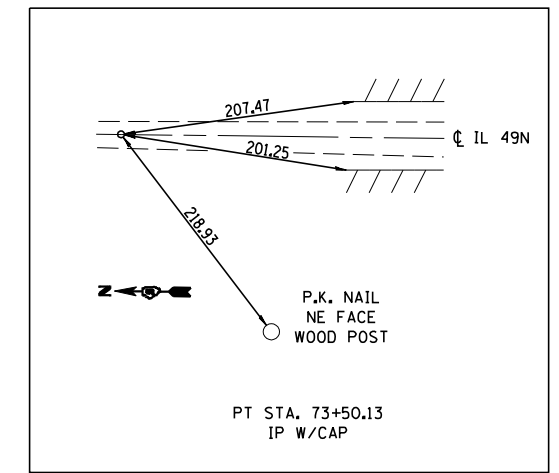
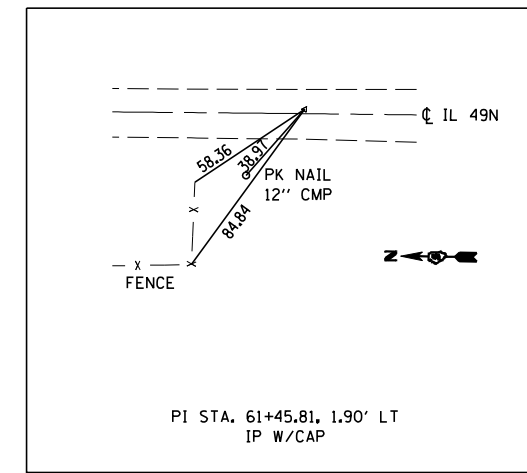
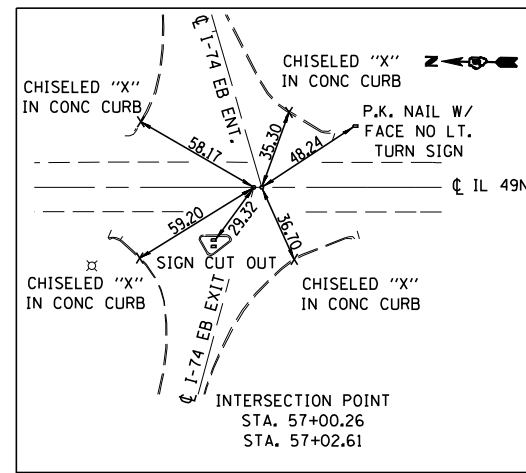
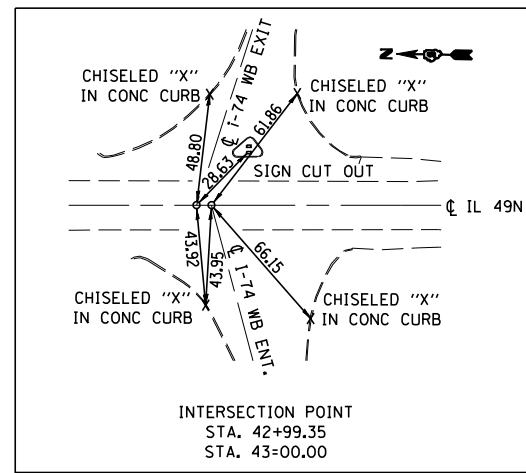
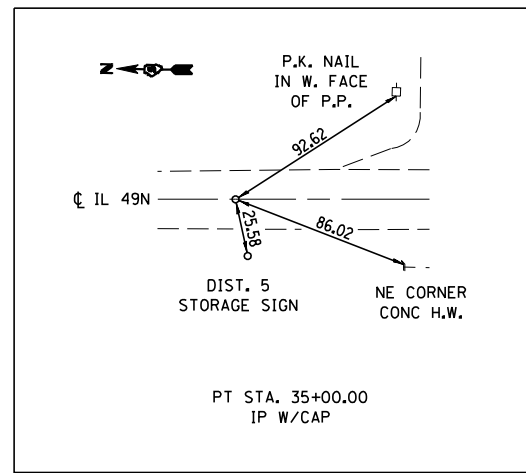


LOCAL TIES



BENCH MARKS

BM #1	CHISELED "□" ON E. FOUNDATION OF SIGN FOR WB I-74 ON W. SIDE OF IL 49 S & N. OF NW RAMP (C), STA. 307+62.594, 33.25' RT, ELEV 667.975
BM #2	CHISELED "□" ON E. FOUNDATION OF SIGN FOR EB I-74 ON E. SIDE OF IL 49 S & S. OF SE RAMP (B), STA. 325+80.458, 33.70' LT, ELEV 666.960
BM #3	CHISELED "□" ON E. FOUNDATION OF SIGN FOR SB IL 49 N. OF ENT. RAMP FOR WB I-74, STA. 42+01.867, 32.88' RT, ELEV 670.842
BM #4	CHISELED "□" ON SE. ABUTMENT, STA. 50+97.692, 16.81' RT, ELEV 688.262
BM #5	CHISELED "□" ON W. FOUNDATION OF SIGN FOR NB IL 49 S. OF ENT. RAMP FOR EB I-74, STA. 58+09.877, 33.23' RT, ELEV 671.562

REVISIONS	
NAME	DATE

ILLINOIS DEPARTMENT OF TRANSPORTATION
LOCAL TIES & BENCH MARKS
 F.A.I. - 74
 CHAMPAIGN &
 VERMILION COUNTIES

SCALE: NONE
 DATE: 06/2003

DRAWN BY: IYL
 CHECKED BY: JH