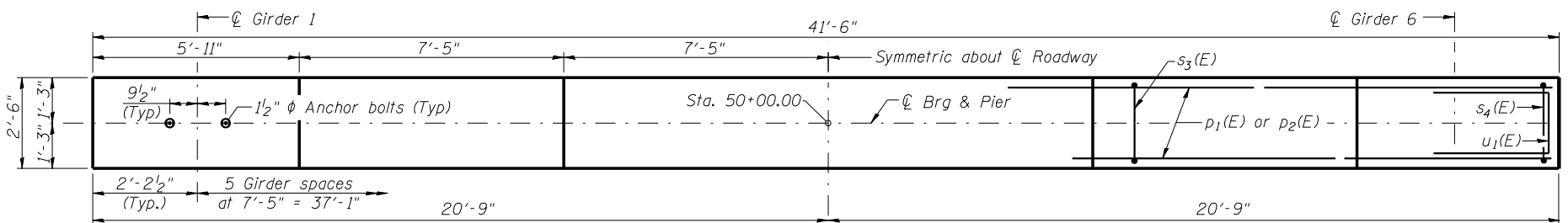


Notes:

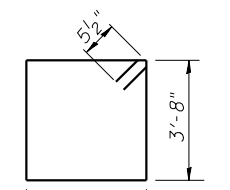
1. Space reinforcement in cap to miss anchor bolts.
2. Pour steps monolithically with cap.
3. The existing Piles shall be cut off 1'-0" below the bottom of the new footing.

ROUTE NO.	SECTION	COUNTY	TOTAL SHEETS	SHEET NO.	SHEET NO. 12
FAI 74	*	CHAMPAIGN	122	63	17 SHEETS
FED. ROAD DIST. NO. 7		ILLINOIS	FED. AID PROJECT		CONTRACT 70001
★ (10-92-8HB-1)BR					

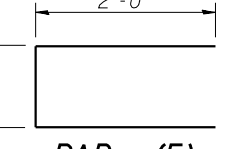
MIN BAR LAP
#5 = 2'-2"



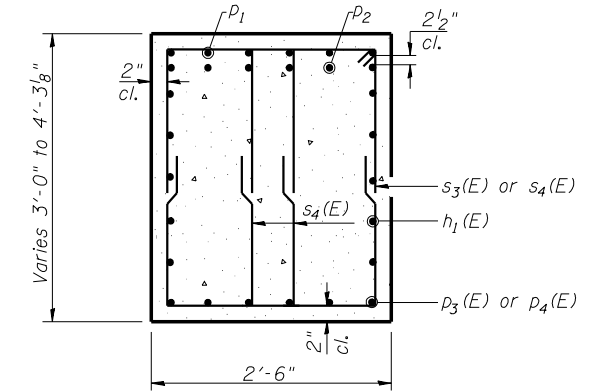
TOP PLAN



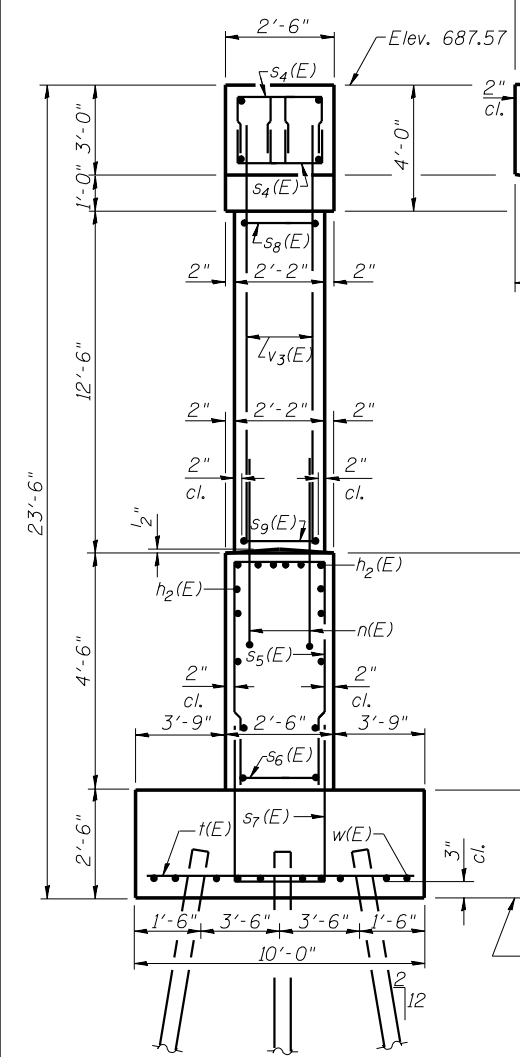
BAR s3(E)



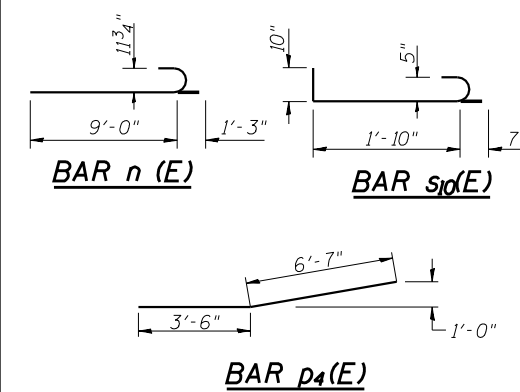
BAR u1(E)



SECTION A-A



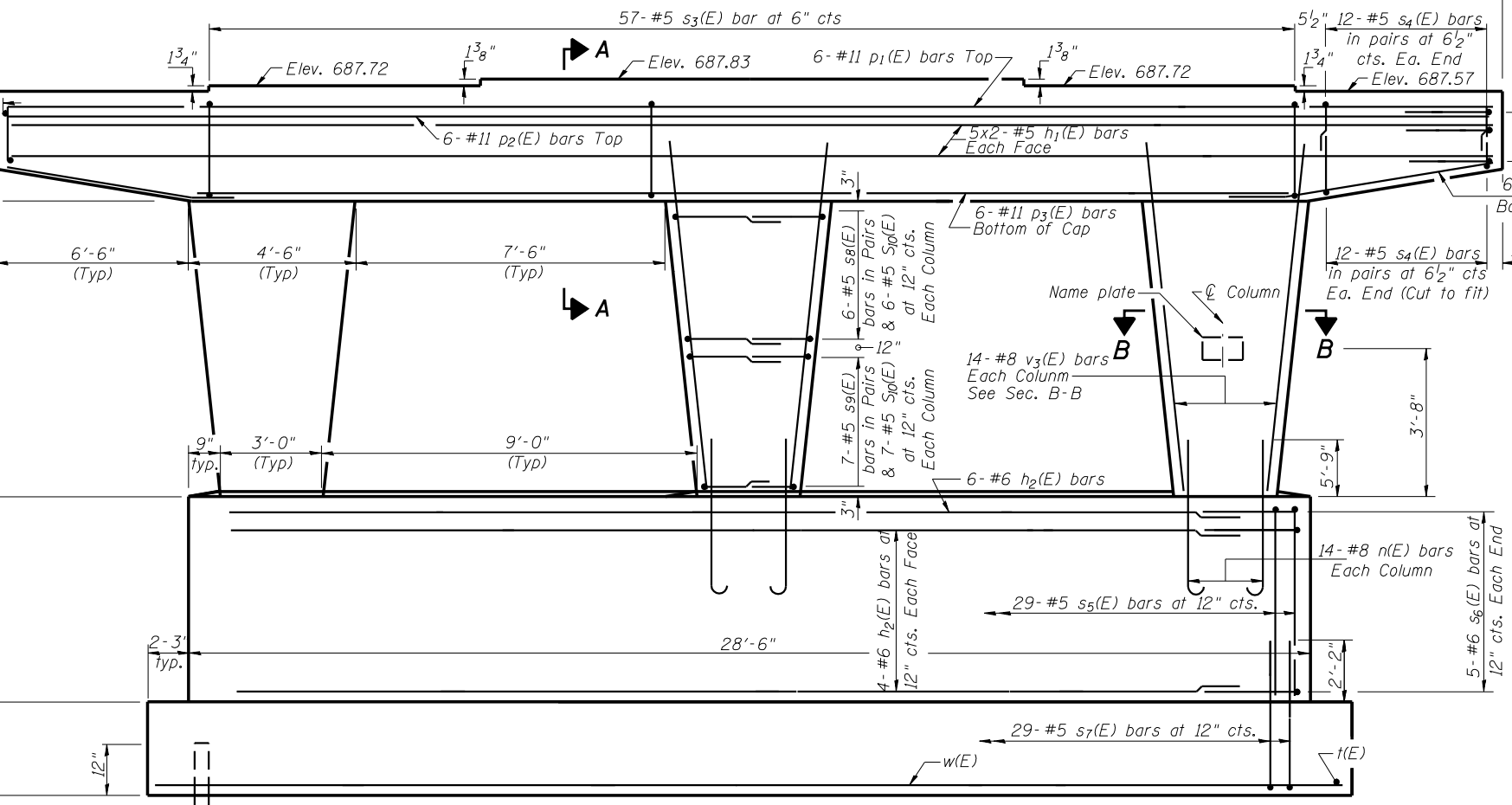
END VIEW



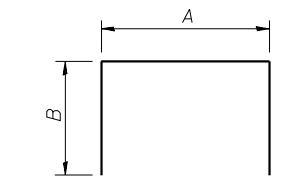
BAR n(E)

BAR s10(E)

BAR p4(E)



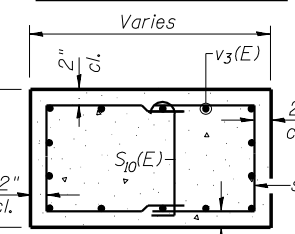
ELEVATION
(Looking South)



BARS p1 & s4 THRU s9

A & B DIMENSIONS

Bar	A	B
p1(E)	41'-0"	2'-6"
s4(E)	1'-6"	2'-11"
s5(E)	2'-2"	4'-3"
s6(E)	2'-1"	2'-6"
s7(E)	2'-2"	4'-5"
s8(E)	1'-10"	3'-2"
s9(E)	1'-10"	2'-9"



SECTION B-B

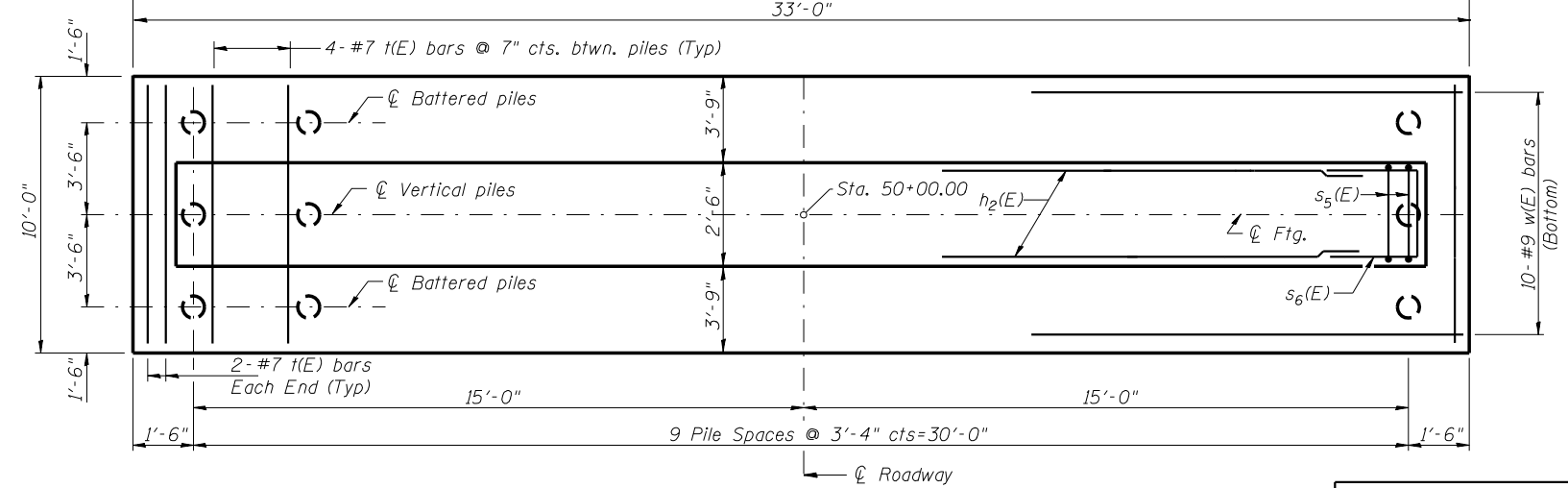
BILL OF MATERIAL

Bar	No.	Size	Length	Shape
h1(E)	20	#5	21'-8"	—
h2(E)	14	#6	28'-2"	—
n(E)	42	#8	10'-3"	U
p1(E)	6	#11	46'-0"	—
p2(E)	6	#11	41'-0"	—
p3(E)	6	#11	28'-0"	—
p4(E)	12	#6	10'-1"	—
s3(E)	57	#5	12'-7"	□
s4(E)	96	#5	7'-4"	□
s5(E)	29	#5	10'-8"	□
s6(E)	10	#6	7'-1"	□
s7(E)	29	#5	11'-0"	□
s8(E)	36	#5	8'-2"	□
s9(E)	42	#5	7'-4"	□
s10(E)	39	#5	3'-3"	□
t(E)	40	#7	9'-8"	—
u(E)	8	#6	6'-1"	□
v3(E)	42	#8	14'-6"	—
w(E)	10	#9	32'-8"	—
Structure Excavation	Cu. Yd.	76.7		
Concrete Structures	Cu. Yd.	67.9		
Reinforcement Bars, Epoxy Coated	Pound	12410		
Furnishing Metal Shell Piles 14" x 0.25"	Foot	1170		
Driving Piles	Foot	1170		

Reinforcement Bars designated (E) shall be epoxy coated.

PILE DATA

Type & Size - Metal shell - 14"φ x 0.25" walls
Nominal Required Bearing: 270 kips
Allowable Resistance Available: 90 kips
Est. Length - 39'
No. Req'd. - 30



FOOTING PLAN

LIN ENGINEERING, LTD.
20 N. Chestnut
Champaign, Illinois 62629
(217) 483-4668
FAX (217) 483-4706
Designed By: MTH Checked By: STD Drawn By: JMD
Date: 11/02 File: 0100277.DGN

REVISIONS	
NAME	DATE

ILLINOIS DEPARTMENT OF TRANSPORTATION
PIER DETAILS
FAS RTE 518 (IL 49S) & FAP RTE 836 (C.H.22)
OVER FAI RTE 74 (I-74)
SECTION (10-92-8HB-1) BR
CHAMPAIGN COUNTY
STA. 1000+88.67 (I-74)
STA. 50+00.00 (IL 49S & C.H. 22)
STRUCTURE NO. 010-0277