

GENERAL NOTES

- Fasteners shall be AASHTO M164 Type 1, mechanically galvanized bolts. Bolts 7/8" ϕ , holes 15/16" ϕ , unless otherwise noted.
- Calculated weight of Structural Steel = 17,800 lbs. (AASHTO M270 Grade 36)
274,060 lbs. (AASHTO M270 Grade 50)
- Field welding of construction accessories will not be permitted to beams or girders.
- Anchor bolts shall be set before bolting diaphragms over supports.
- The main load carrying member components subject to tensile stress shall conform to the Supplemental Requirements for Notch Toughness Zone 2. These components are the tension flanges, webs and all splice plate material except fill plates.
- Reinforcement bars shall conform to the requirements of ASTM A 706 Gr 60 (IL Modified). See Special Provisions
- Slope wall shall be reinforced with welded wire fabric, 6" x 6" - W4.0 x W4.0, weighing 58 lbs. Per 100 sq. ft.
- The Contractor shall drive test piles to 110% of the nominal required bearing specified in production locations at substructures specified or approved by the Engineer before ordering the remainder of piles..
- Bearing seat surfaces shall be constructed or adjusted to the designed elevations within a tolerance of 1/8 inch. Adjustment shall be made either by grinding the surface or by shimming the bearing. Two 1/8" adjusting shims, of the dimensions of the bottom bearing plate, shall be provided for each bearing in addition to all other plates or shims.
- Metal Shell Piles at the abutments shall be driven in holes precored to bottom of existing pavement under the embankment according to article 512.09(c) of the Standard Specifications. Cost included in Driving Piles.
- All construction joints shall be bonded.
- The Organic Zinc Rich Primer / Epoxy / Urethane Paint System shall be used for painting of new structural steel except where otherwise noted. The entire system shall be shop applied, with the exception that masked off connection surfaces, field installed fasteners and damaged areas shall be touched up in the field. The color of the final finish coat for all interior steel surfaces shall be Gray, Munsell No. 5B 7/1. The color of the final finish coat for the exterior and bottom flange of the fascia beams shall be Interstate Green (Munsell Color Standard 7.5G 4/8) -. See Special Provision for "Cleaning and Painting New Metal Structures".

The contractor shall construct the parapets according to the F shape parapet detailed in the special provisions in lieu of the New Jersey parapet detailed in the contract plans.

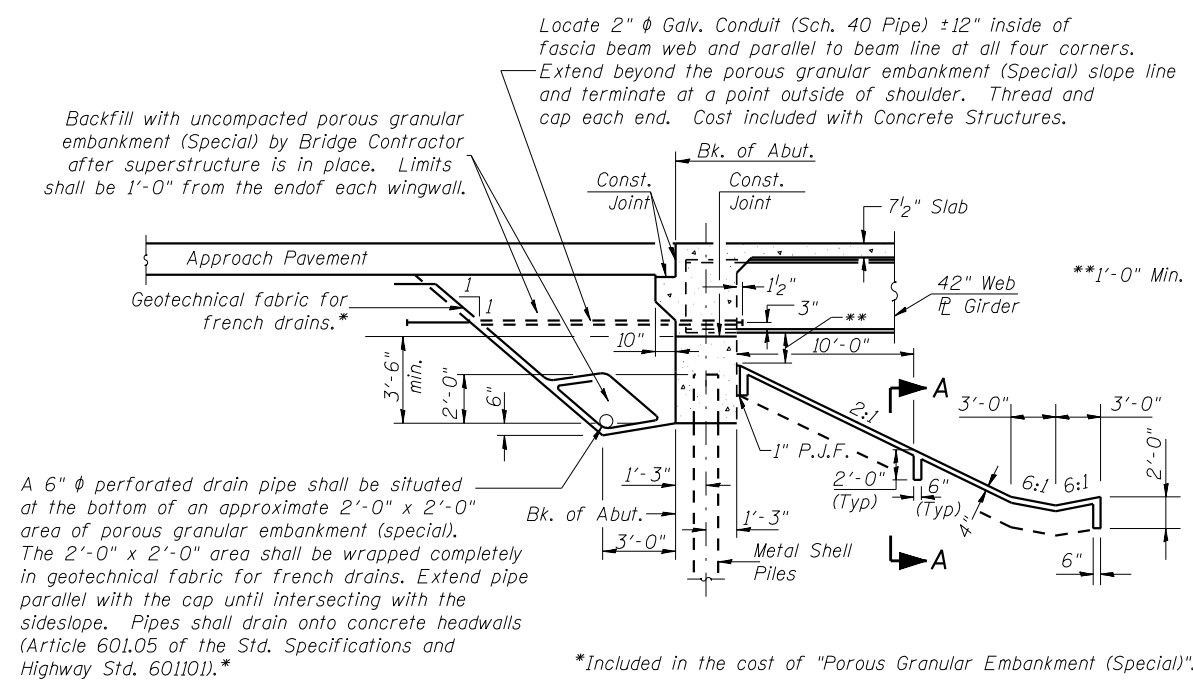
STATION 1160+20.53
BUILT 200 BY
STATE OF ILLINOIS
F.A.I. RT. 74 SEC. (10-92-8HB-4)BR
LOADING HL93 (HS20)
STR. NO. 092-0203

NAME PLATE

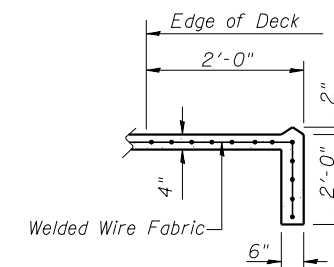
See Std. 515001

ROUTE NO.	SECTION	COUNTY	TOTAL SHEETS	SHEET NO.	SHEET NO. 2
FAI 74	★	VERMILION	122	70	17 SHEETS
FED. ROAD DIST. NO. 7	ILLINOIS	FED. AID PROJECT	★ (10-92-8HB-4)BR		

Note: Excavation for placing PGE (Special) is paid for as Structure Excavation.



INTEGRAL ABUTMENT & SLOPEWALL DETAILS



SECTION A-A

REVISIONS	
NAME	DATE

LIN ENGINEERING, LTD.
210 W. Chestnut
Chattanooga, Illinois 62629
207-483-4669 FAX 207-483-4706
Designed By: MTH Checked By: STD Drawn By: JMD
Date: 11/02 File: 0920203.DGN

ILLINOIS DEPARTMENT OF TRANSPORTATION
GENERAL NOTES
FAP ROUTE 840 (IL 49N)
OVER FAI RTE 74 (I-74)
SECTION (10-92-8HB-4) BR
VERMILION COUNTY
STA. 1160+20.53 (I-74)
STA. 50+00.00 (IL 49N)
STRUCTURE NO. 092-0203