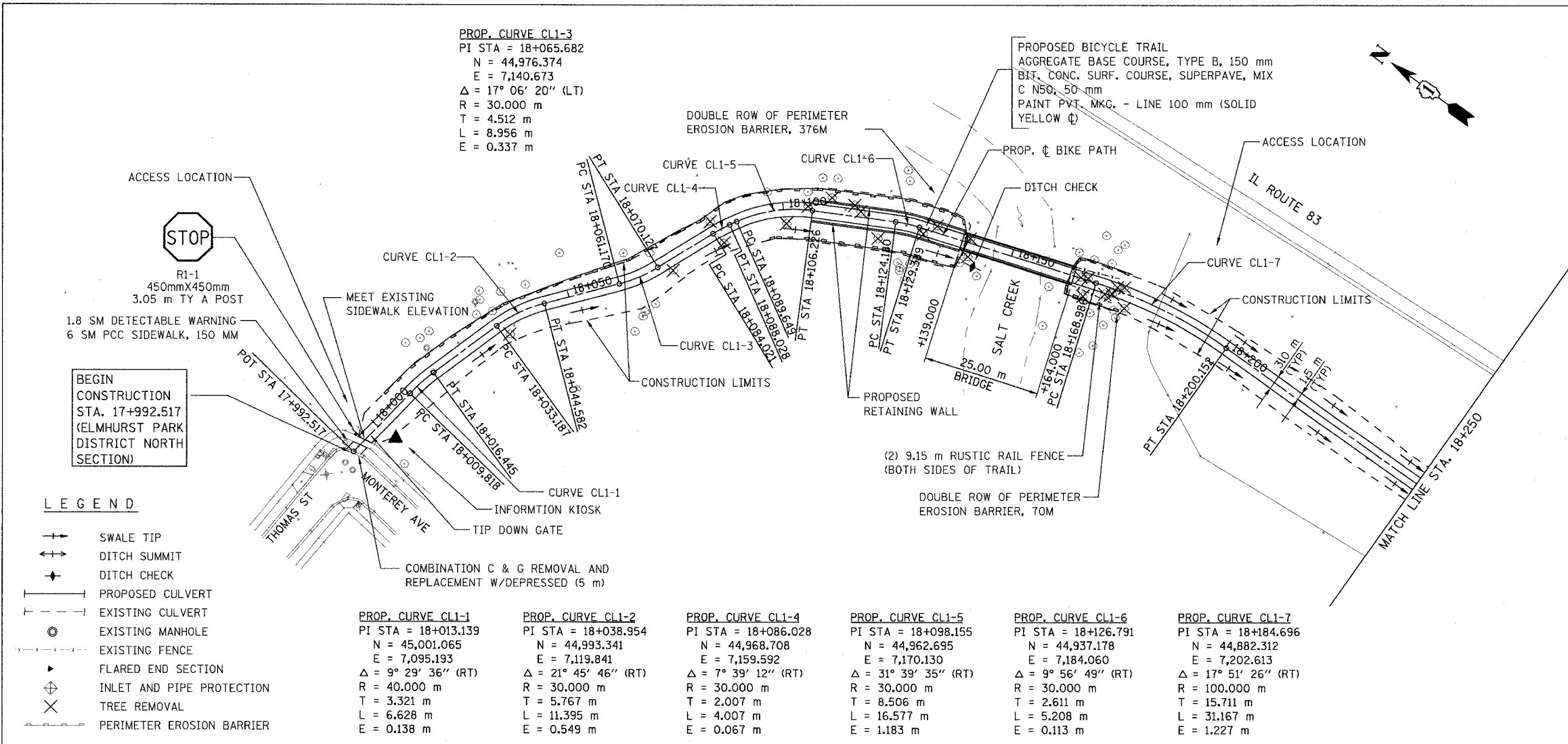


SECTION	COUNTY	TOTAL SHEETS	SHEET NO.
02-00034-00-BT	DUPAGE	108	10
STA. TO STA.			
IDOT PROJECT NO. M-8003(216)			
SALT CREEK GREENWAY TRAIL			
CONTRACT NO. 83714			



**PROP. CURVE CL1-3**  
 PI STA = 18+065.682  
 N = 44,976.374  
 E = 7,140.673  
 $\Delta = 17^\circ 06' 20''$  (LT)  
 R = 30.000 m  
 T = 4.512 m  
 L = 8.956 m  
 E = 0.337 m

**STOP**  
 R1-1  
 450mmX450mm  
 3.05 m TY A POST  
 1.8 SM DETECTABLE WARNING  
 6 SM PCC SIDEWALK, 150 MM

**BEGIN CONSTRUCTION**  
 STA. 17+992.517  
 (ELMHURST PARK DISTRICT NORTH SECTION)

**LEGEND**

- +— SWALE TIP
- +— DITCH SUMMIT
- +— DITCH CHECK
- +— PROPOSED CULVERT
- +— EXISTING CULVERT
- ⊙ EXISTING MANHOLE
- +— EXISTING FENCE
- ▶ FLARED END SECTION
- ⊕ INLET AND PIPE PROTECTION
- ⊗ TREE REMOVAL
- +— PERIMETER EROSION BARRIER

**PROP. CURVE CL1-1**  
 PI STA = 18+013.139  
 N = 45,001.065  
 E = 7,095.193  
 $\Delta = 9^\circ 29' 36''$  (RT)  
 R = 40.000 m  
 T = 3.321 m  
 L = 6.628 m  
 E = 0.138 m

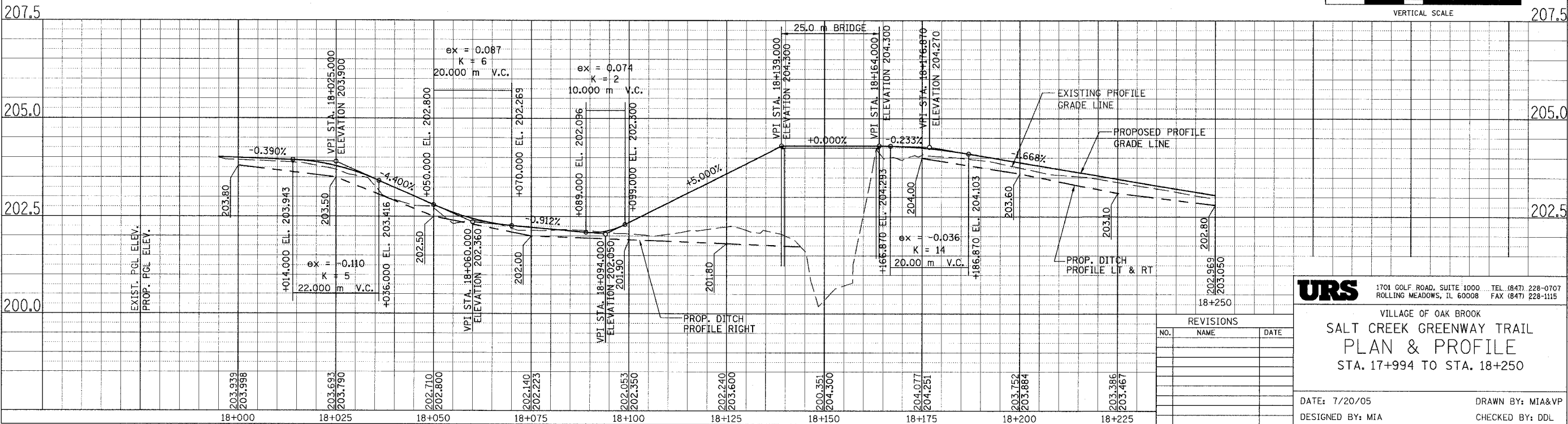
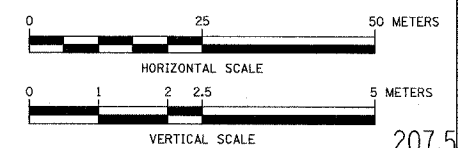
**PROP. CURVE CL1-2**  
 PI STA = 18+038.954  
 N = 44,993.341  
 E = 7,119.841  
 $\Delta = 21^\circ 45' 46''$  (RT)  
 R = 30.000 m  
 T = 5.767 m  
 L = 11.395 m  
 E = 0.549 m

**PROP. CURVE CL1-4**  
 PI STA = 18+086.028  
 N = 44,968.708  
 E = 7,159.592  
 $\Delta = 7^\circ 39' 12''$  (RT)  
 R = 30.000 m  
 T = 2.007 m  
 L = 4.007 m  
 E = 0.067 m

**PROP. CURVE CL1-5**  
 PI STA = 18+098.155  
 N = 44,962.695  
 E = 7,170.130  
 $\Delta = 31^\circ 39' 35''$  (RT)  
 R = 30.000 m  
 T = 8.506 m  
 L = 16.577 m  
 E = 1.183 m

**PROP. CURVE CL1-6**  
 PI STA = 18+126.791  
 N = 44,937.178  
 E = 7,184.060  
 $\Delta = 9^\circ 56' 49''$  (RT)  
 R = 30.000 m  
 T = 2.611 m  
 L = 5.208 m  
 E = 0.113 m

**PROP. CURVE CL1-7**  
 PI STA = 18+184.696  
 N = 44,882.312  
 E = 7,202.613  
 $\Delta = 17^\circ 51' 26''$  (RT)  
 R = 100.000 m  
 T = 15.711 m  
 L = 31.167 m  
 E = 1.227 m



**URS** 1701 GOLF ROAD, SUITE 1000 TEL (847) 228-0707  
 ROLLING MEADOWS, IL 60008 FAX (847) 228-1115

VILLAGE OF OAK BROOK  
**SALT CREEK GREENWAY TRAIL**  
**PLAN & PROFILE**  
 STA. 17+994 TO STA. 18+250

DATE: 7/20/05	DRAWN BY: MIA&VP
DESIGNED BY: MIA	CHECKED BY: DDL