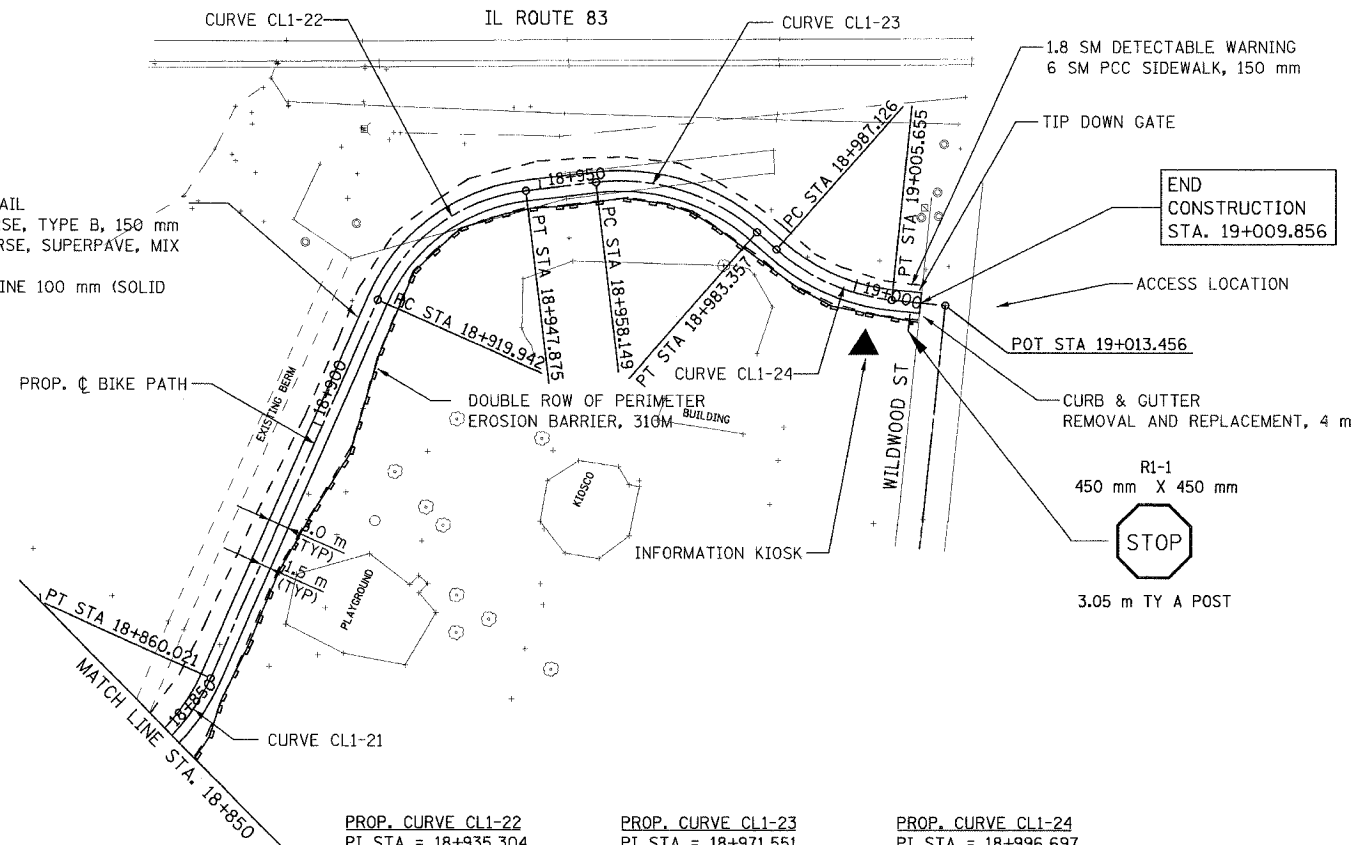


PROP. CURVE CL1-21
 PI STA = 18+847.089
 N = 44,268.495
 E = 7,148.476
 $\Delta = 61^\circ 35' 14''$ (LT)
 R = 27,000 m
 T = 16.091 m
 L = 29.022 m
 E = 4.431 m

PROPOSED BICYCLE TRAIL
 AGGREGATE BASE COURSE, TYPE B, 150 mm
 BIT. CONC. SURF. COURSE, SUPERPAVE, MIX
 C, N50, 50 mm
 PAINT PAVT. MKG. - LINE 100 mm (SOLID
 YELLOW \square)



PROP. CURVE CL1-22
 PI STA = 18+935.304
 N = 44,231.524
 E = 7,232.036
 $\Delta = 59^\circ 16' 30''$ (RT)
 R = 27,000 m
 T = 15.362 m
 L = 27.933 m
 E = 4.064 m

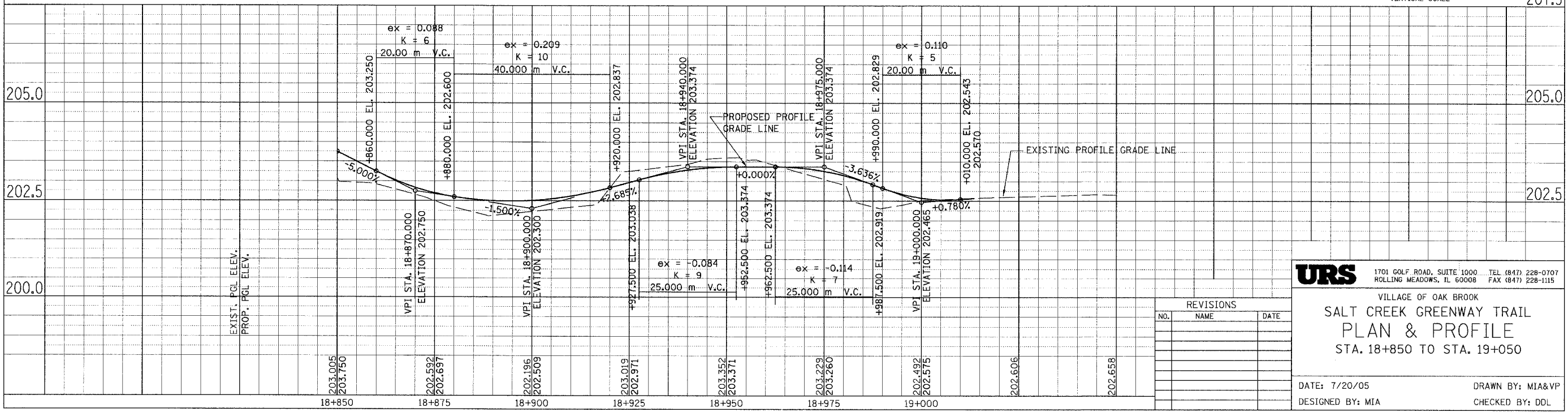
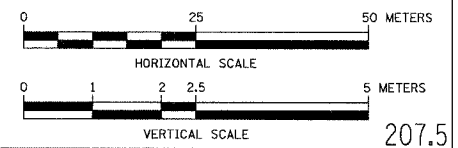
PROP. CURVE CL1-23
 PI STA = 18+971.551
 N = 44,192.766
 E = 7,236.697
 $\Delta = 48^\circ 08' 37''$ (RT)
 R = 30,000 m
 T = 13.402 m
 L = 25.208 m
 E = 2.857 m

PROP. CURVE CL1-24
 PI STA = 18+996.697
 N = 44,172.671
 E = 7,219.052
 $\Delta = 35^\circ 23' 12''$ (LT)
 R = 30,000 m
 T = 9.570 m
 L = 18.528 m
 E = 1.490 m

SECTION	COUNTY	TOTAL SHEETS	SHEET NO.
02-00034-00-BT	DUPAGE	108	13
STA.	TO STA.		
IDOT PROJECT NO. M-8003(216)			
SALT CREEK GREENWAY TRAIL			
CONTRACT NO. 83714			



FOR LEGEND SEE SHEET NO. 10



URS 1701 GOLF ROAD, SUITE 1000 TEL (847) 228-0707
 ROLLING MEADOWS, IL 60008 FAX (847) 228-1115

VILLAGE OF OAK BROOK
SALT CREEK GREENWAY TRAIL
PLAN & PROFILE
 STA. 18+850 TO STA. 19+050

REVISIONS		
NO.	NAME	DATE

DATE: 7/20/05 DRAWN BY: MIA&VP
 DESIGNED BY: MIA CHECKED BY: DDL