

SECTION	COUNTY	TOTAL SHEETS	SHEET NO.
02-00034-00-BT	DUPAGE	108	15
STA. TO STA.			
IDOT PROJECT NO. M-8003(216)			
SALT CREEK GREENWAY TRAIL			

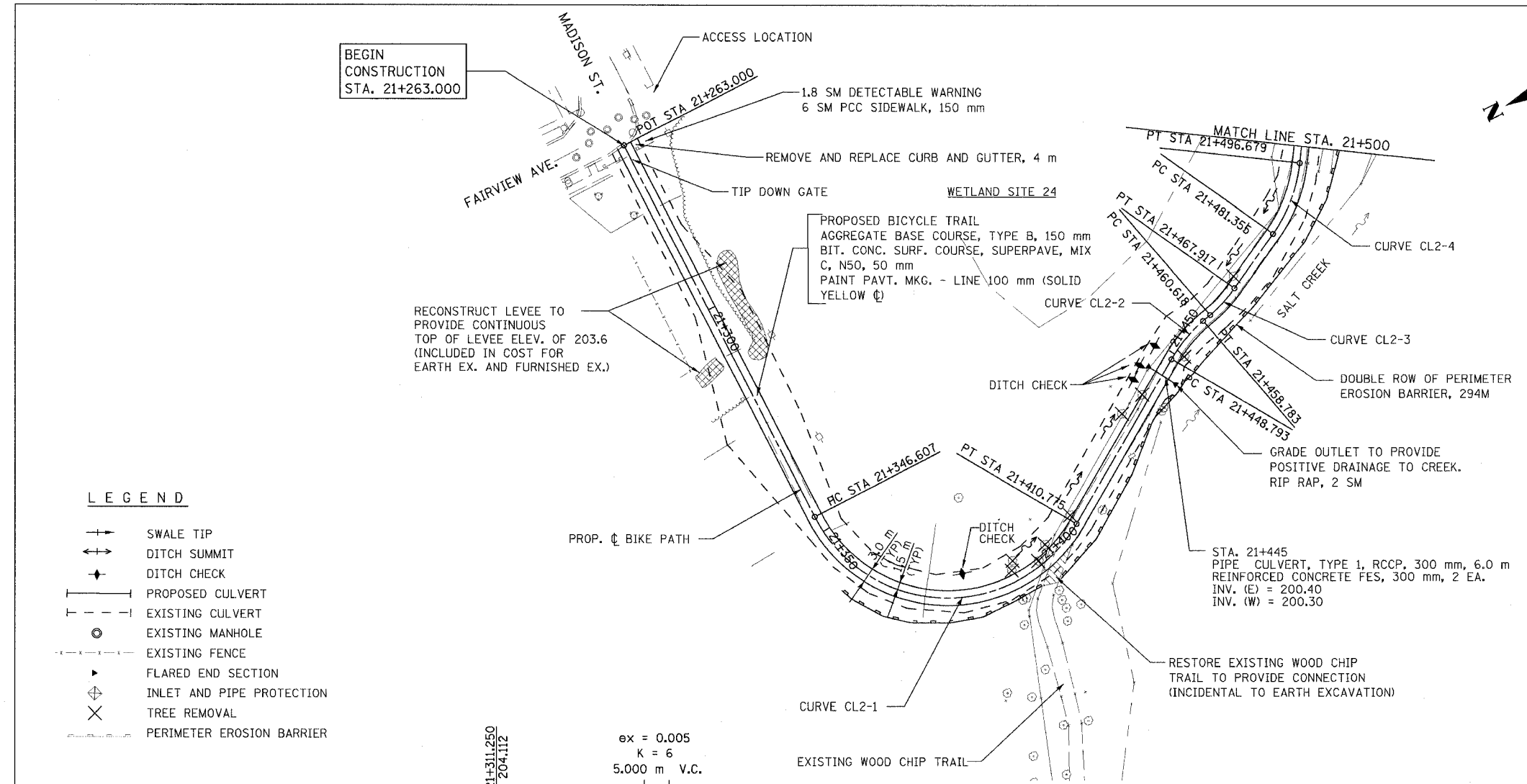
CONTRACT NO. 83714

PROP. CURVE CL2-1
 PI STA = 21+401.350
 N = 42,734.785
 E = 7,482.362
 $\Delta = 122^\circ 33' 12''$ (LT)
 R = 30,000 m
 T = 54.743 m
 L = 64.169 m
 E = 32.424 m

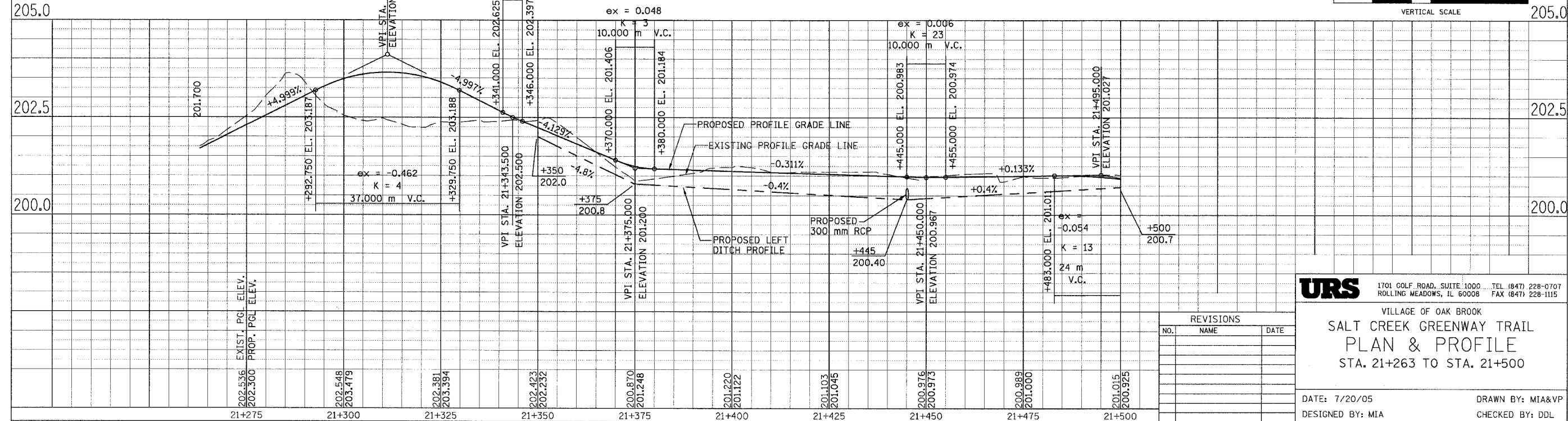
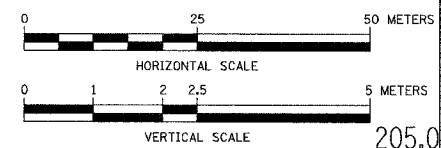
PROP. CURVE CL2-2
 PI STA = 21+453.835
 N = 42,648.446
 E = 7,528.306
 $\Delta = 19^\circ 04' 49''$ (RT)
 R = 30,000 m
 T = 5.042 m
 L = 9.990 m
 E = 0.421 m

PROP. CURVE CL2-3
 PI STA = 21+464.285
 N = 42,638.030
 E = 7,529.945
 $\Delta = 13^\circ 56' 23''$ (LT)
 R = 30,000 m
 T = 3.668 m
 L = 7.299 m
 E = 0.223 m

PROP. CURVE CL2-4
 PI STA = 21+489.188
 N = 42,615.053
 E = 7,539.640
 $\Delta = 29^\circ 15' 58''$ (LT)
 R = 30,000 m
 T = 7.833 m
 L = 15.324 m
 E = 1.006 m



- LEGEND**
- +— SWALE TIP
 - +— DITCH SUMMIT
 - +— DITCH CHECK
 - +— PROPOSED CULVERT
 - +— EXISTING CULVERT
 - +— EXISTING MANHOLE
 - +— EXISTING FENCE
 - +— FLARED END SECTION
 - +— INLET AND PIPE PROTECTION
 - +— TREE REMOVAL
 - +— PERIMETER EROSION BARRIER



URS 1701 GOLF ROAD, SUITE 1000 ... TEL (847) 228-0707
 ROLLING MEADOWS, IL 60008 FAX (847) 228-1115

VILLAGE OF OAK BROOK
**SALT CREEK GREENWAY TRAIL
 PLAN & PROFILE**
 STA. 21+263 TO STA. 21+500

DATE: 7/20/05 DRAWN BY: MIA&VP
 DESIGNED BY: MIA CHECKED BY: DDL

NO.	NAME	DATE