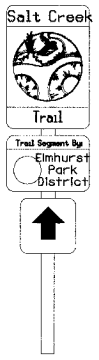
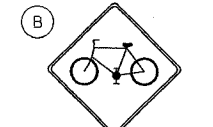


SECTION	COUNTY	TOTAL SHEETS	SHEET NO.
02-00034-00-BT	DUPAGE	108	20
STA.	TO STA.		
IDOT PROJECT NO. M-8003(216)			
SALT CREEK GREENWAY TRAIL			
CONTRACT NO. 83714			

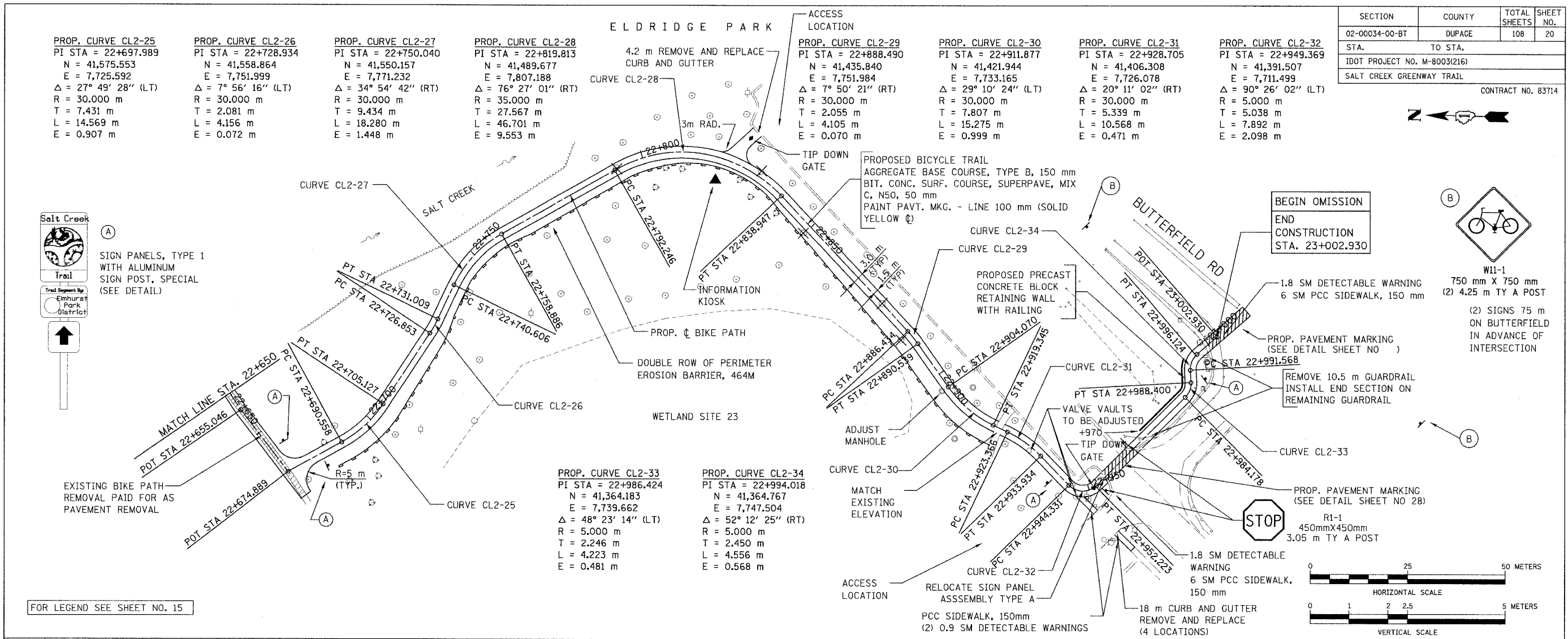
PROP. CURVE CL2-25 PI STA = 22+697.989 N = 41,575.553 E = 7,725.592 $\Delta = 27^\circ 49' 28''$ (LT) R = 30.000 m T = 7.431 m L = 14.569 m E = 0.907 m	PROP. CURVE CL2-26 PI STA = 22+728.934 N = 41,558.864 E = 7,751.999 $\Delta = 7^\circ 56' 16''$ (LT) R = 30.000 m T = 2.081 m L = 4.156 m E = 0.072 m	PROP. CURVE CL2-27 PI STA = 22+750.040 N = 41,550.157 E = 7,771.232 $\Delta = 34^\circ 54' 42''$ (RT) R = 30.000 m T = 9.434 m L = 18.280 m E = 1.448 m	PROP. CURVE CL2-28 PI STA = 22+819.813 N = 41,489.677 E = 7,807.188 $\Delta = 76^\circ 27' 01''$ (RT) R = 35.000 m T = 27.567 m L = 46.701 m E = 9.553 m	PROP. CURVE CL2-29 PI STA = 22+888.490 N = 41,435.840 E = 7,751.984 $\Delta = 7^\circ 50' 21''$ (RT) R = 30.000 m T = 2.055 m L = 4.105 m E = 0.070 m	PROP. CURVE CL2-30 PI STA = 22+911.877 N = 41,421.944 E = 7,733.165 $\Delta = 29^\circ 10' 24''$ (LT) R = 30.000 m T = 7.807 m L = 15.275 m E = 0.999 m	PROP. CURVE CL2-31 PI STA = 22+928.705 N = 41,406.308 E = 7,726.078 $\Delta = 20^\circ 11' 02''$ (RT) R = 30.000 m T = 5.339 m L = 10.568 m E = 0.471 m	PROP. CURVE CL2-32 PI STA = 22+949.369 N = 41,391.507 E = 7,711.499 $\Delta = 90^\circ 26' 02''$ (LT) R = 5.000 m T = 5.038 m L = 7.892 m E = 2.098 m
--	--	--	---	--	--	--	--



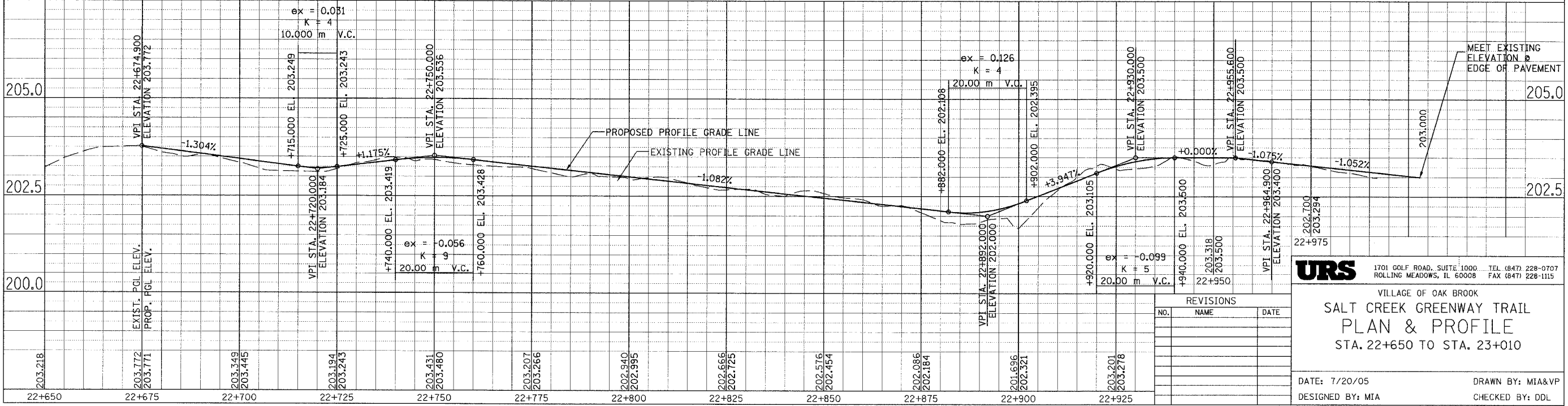
(A) SIGN PANELS, TYPE 1 WITH ALUMINUM SIGN POST, SPECIAL (SEE DETAIL)



W11-1
750 mm X 750 mm
(2) 4.25 m TY A POST
(2) SIGNS 75 m ON BUTTERFIELD IN ADVANCE OF INTERSECTION



FOR LEGEND SEE SHEET NO. 15



URS 1701 GOLF ROAD, SUITE 1000 TEL (847) 228-0707
ROLLING MEADOWS, IL 60008 FAX (847) 228-1115

VILLAGE OF OAK BROOK
SALT CREEK GREENWAY TRAIL
PLAN & PROFILE
STA. 22+650 TO STA. 23+010

REVISIONS		
NO.	NAME	DATE

DATE: 7/20/05
DESIGNED BY: MIA
DRAWN BY: MIA&VP
CHECKED BY: DDL