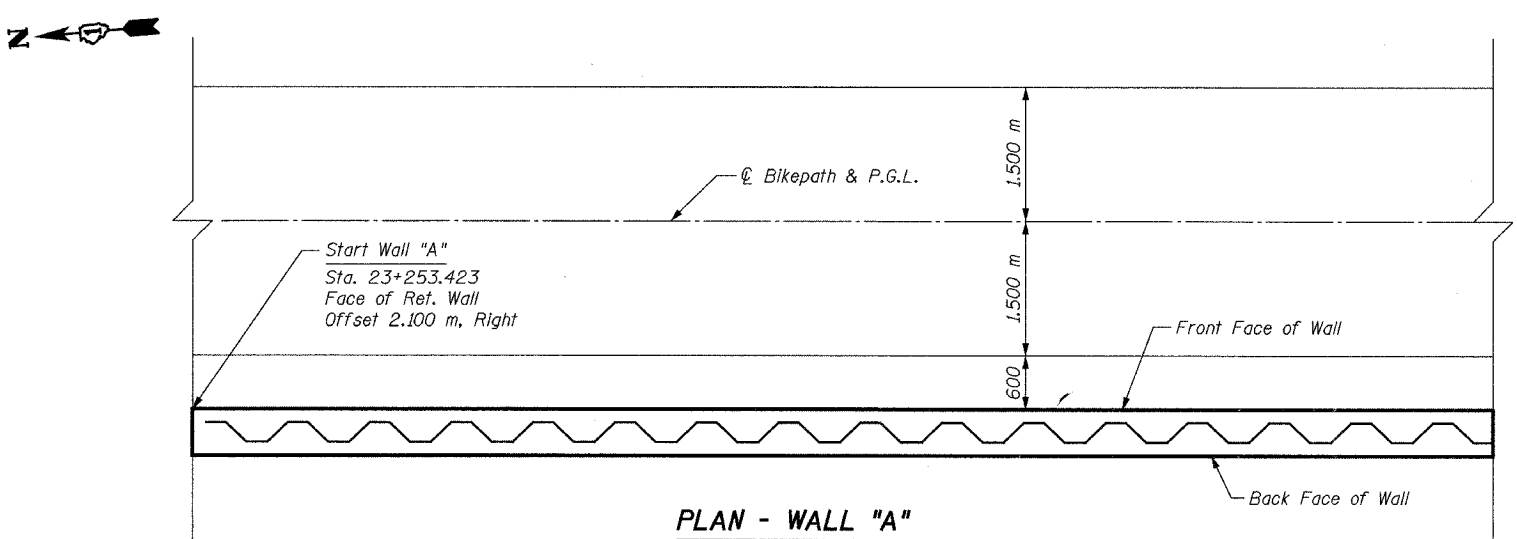
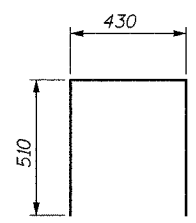


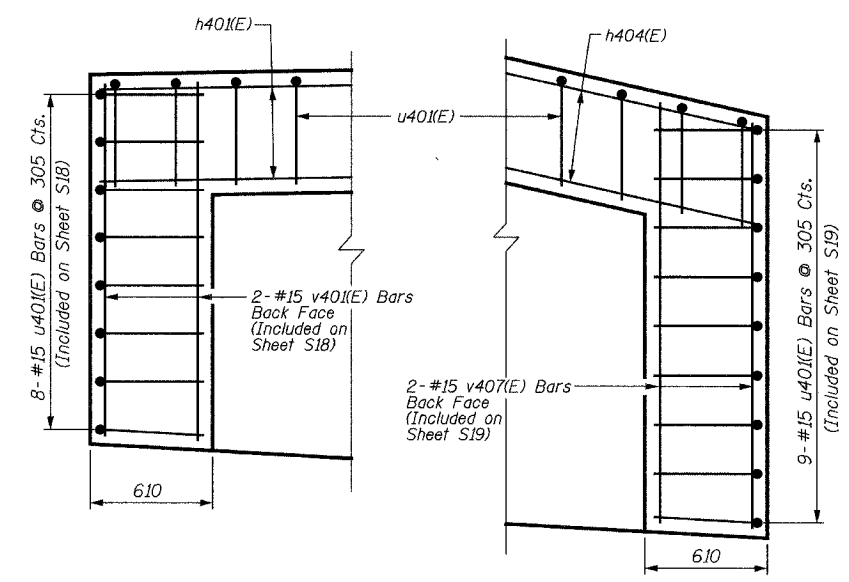
**ELEVATION - WALL "A"**  
(Sta. 23+253.423 to Sta. 23+268)



**PLAN - WALL "A"**  
(Sta. 23+253.423 to Sta. 23+268)  
(Reinforcement Omitted for Clarity)



**BAR u40(E)**



**NORTH END**  
**SOUTH END**  
**END CAP WALL DETAILS - WALL "A"**

**BILL OF MATERIAL**

Bar	No.	Size	Length	Shape
h40(E)	13	#15	6.48 m	—
h402(E)	11	#15	8.64 m	—
u40(E)	57	#15	1.45 m	□
v40(E)	11	#15	1.33 m	—
v402(E)	11	#15	1.56 m	—
v403(E)	14	#15	1.82 m	—
v404(E)	13	#15	2.08 m	—
Concrete Structures		Cu. M	11.4	
Reinforcement Bars, Epoxy Coated		kg	570	
Structure Excavation		Cu. M	14	
Permanent Steel Sheet Piling		Sq. M	58	
Pipe Handrail		Meter	15	

**NOTES:**

- Use Fan h(E) bars for even distribution over face of wall.
- Cut v(E) bars as necessary in field to fit.
- Minimum lap for #15 bar = 640 mm.
- All exposed edges of concrete shall have a 20 mm chamfer unless shown otherwise.
- For minimum effective section modulus properties for sheet piling sections, refer to special provision for Permanent Steel Sheet Piling.
- Work this sheet with Sheet S19.
- Bars designated (E) shall be epoxy coated.
- All dimensions are in millimeters (mm) unless otherwise noted.
- For Typical Section thru Wall, see Sheet S19.

SHEET S18 of S33

REVISIONS		NAME	DATE

**URS** 1701 GOLF ROAD, SUITE 1000 TEL (847) 228-0707  
ROLLING MEADOWS, IL 60008 FAX (847) 228-1115

VILLAGE OF OAKBROOK  
**SALT CREEK GREENWAY TRAIL**  
**WALL "A", STA. 23+253.423 TO**  
**STA. 23+268, PLAN & ELEVATION**

DATE: 06/30/05  
DESIGNED BY: MDS

DRAWN BY: MDS  
CHECKED BY: GAT