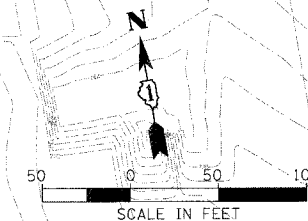
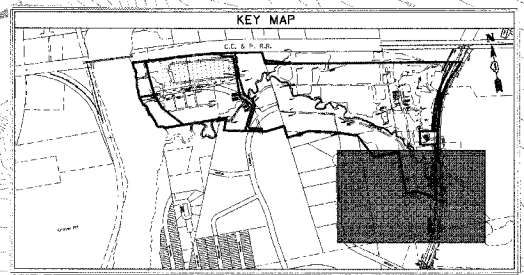
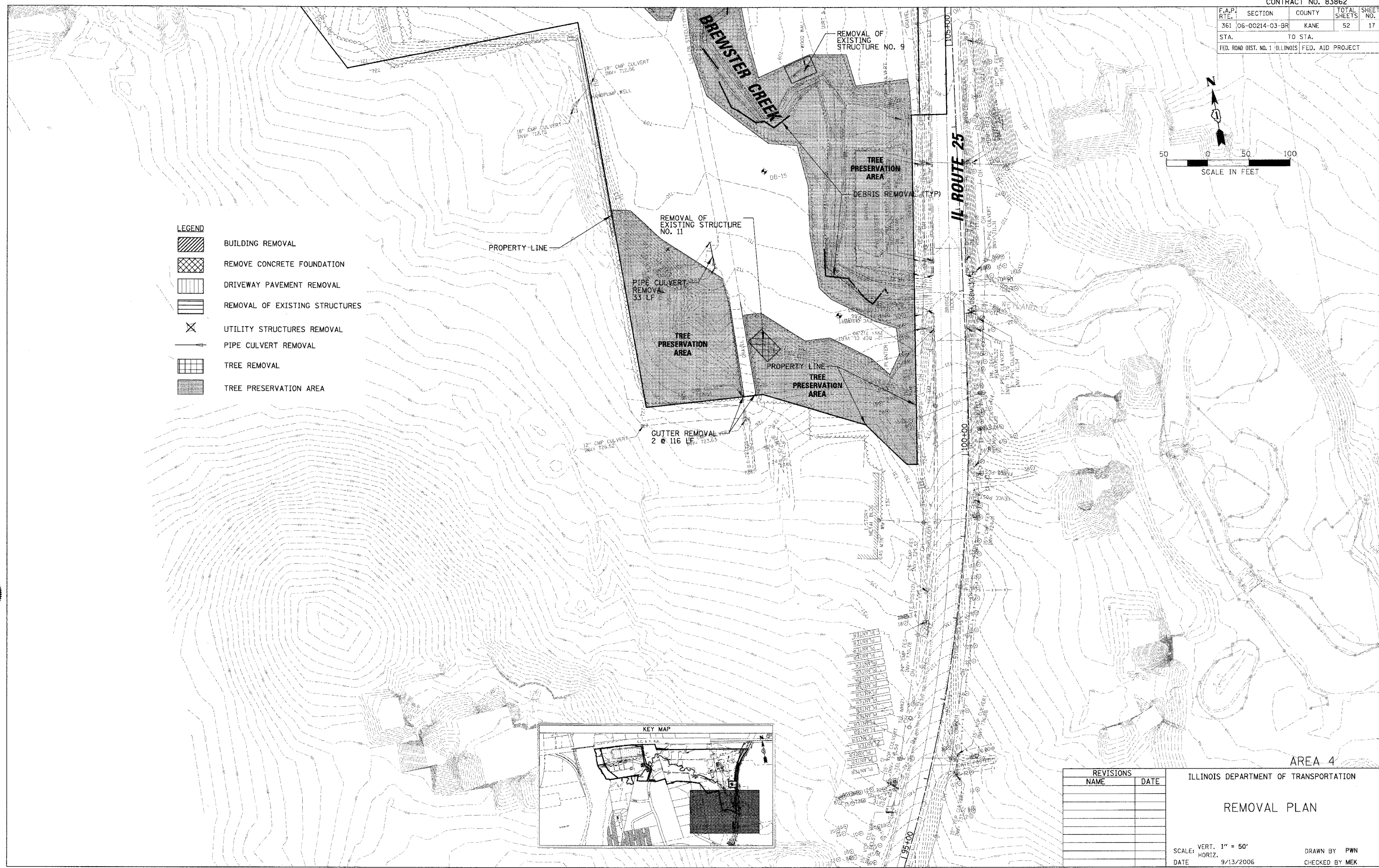


F.A.P. RTE.	SECTION	COUNTY	TOTAL SHEETS	SHEET NO.
361	06-00214-03-BR	KANE	52	17
STA.		TO STA.		
FED. ROAD DIST. NO. 1 ILLINOIS FED. AID PROJECT				



LEGEND

	BUILDING REMOVAL
	REMOVE CONCRETE FOUNDATION
	DRIVEWAY PAVEMENT REMOVAL
	REMOVAL OF EXISTING STRUCTURES
	UTILITY STRUCTURES REMOVAL
	PIPE CULVERT REMOVAL
	TREE REMOVAL
	TREE PRESERVATION AREA



REVISIONS	
NAME	DATE

ILLINOIS DEPARTMENT OF TRANSPORTATION

REMOVAL PLAN

SCALE: VERT. 1" = 50'
 HORIZ. 1" = 100'

DATE: 9/13/2006

DRAWN BY: PWN
 CHECKED BY: MEK

CHRISTOPHER B. BURKE ENGINEERING, LTD.
 9575 W. Higgins Road, Suite 600
 Rosemont, Illinois 60018
 (847) 823-0500



PLOT DATE = 9/13/2006
 FILE NAME = N:\Vancouver\014716R1D\Civil\VIEW\147164.REM
 PLOT SCALE = 1/4" = 100'
 USER NAME = MSBERK