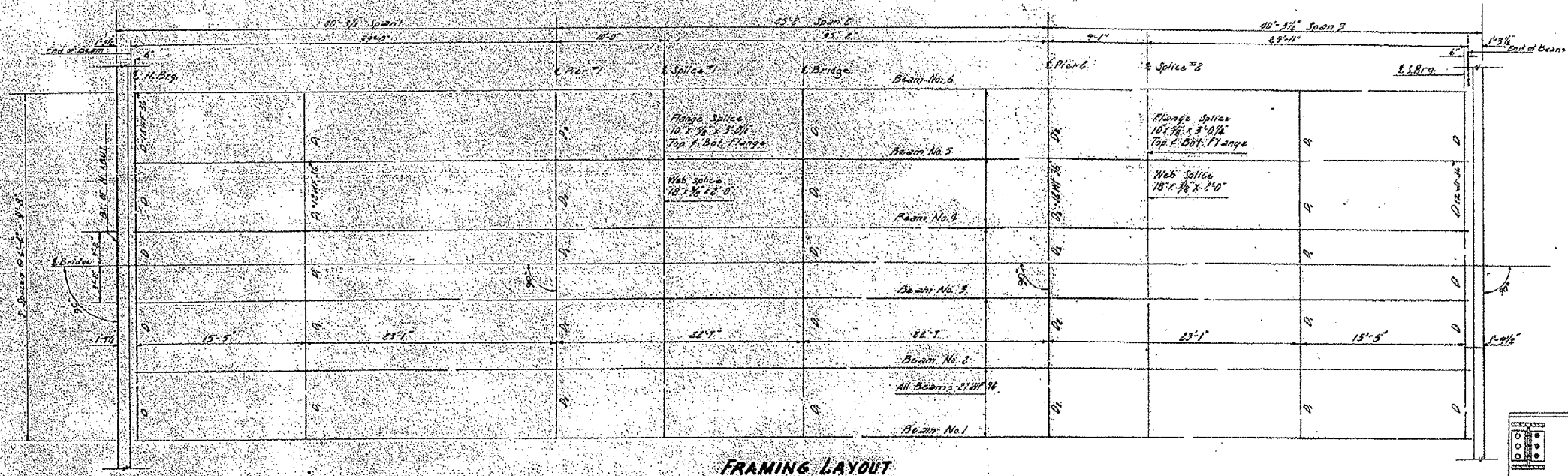
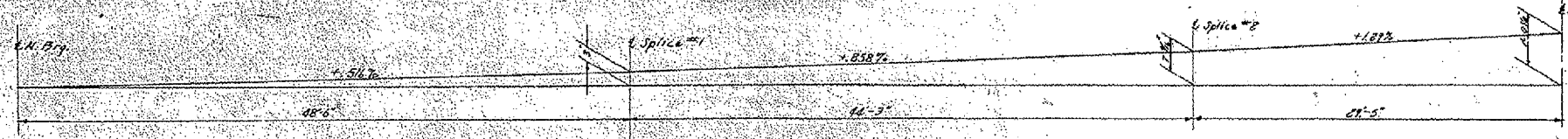


F.A.P. R.T.E.	SECTION	COUNTY	TOTAL SHEETS	SHEET NO.
310			97	32
STA.	TO STA.			
FED. ROAD DIST. NO.	ILLINOIS FED. AID PROJECT			

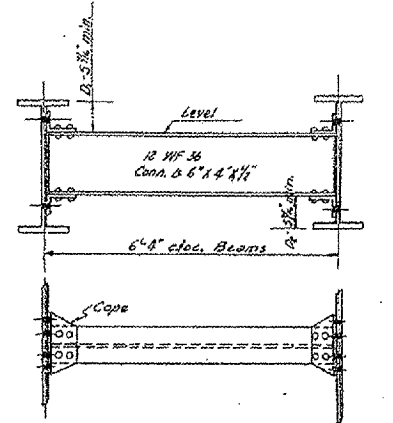
STATE OF ILLINOIS
DEPARTMENT OF PUBLIC WORKS & BUILDINGS
DIVISION OF HIGHWAYS



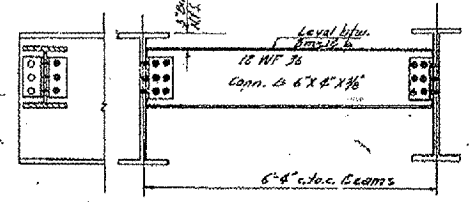
FRAMING LAYOUT



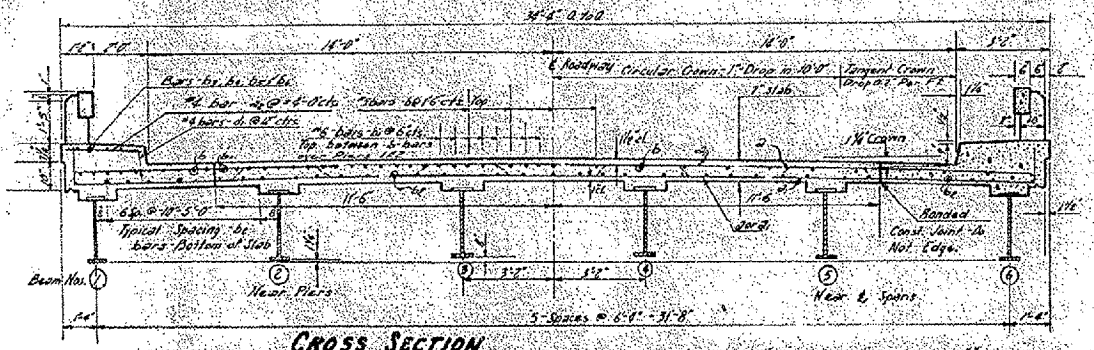
FABRICATION DIAGRAM



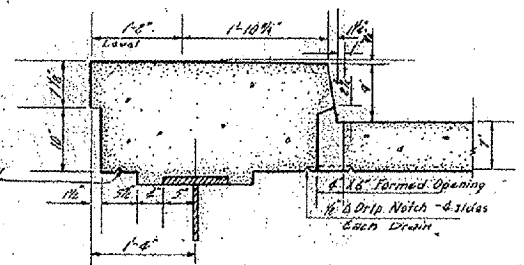
DETAIL OF DIAPHRAGMS-D #02
15 dia. Req. 10 dia. Req.



DETAIL OF DIAPHRAGMS-D
10 Req'd.



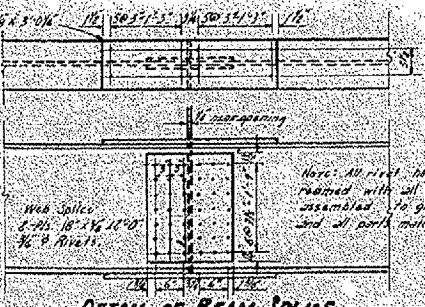
CROSS SECTION



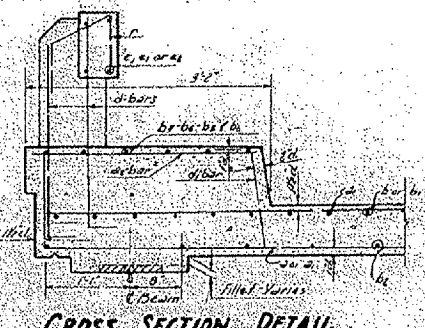
FLOOR DRAIN DETAIL

Method of Determining Fillet Heights:
After all structural steel has been erected, elevations at the top flanges of the beams shall be taken at intervals not to exceed 10 ft. From these elevations subtract the increment of deflection for these points, determined from the full deflection diagram. The elevations so obtained subtracted from the theoretical grade elevations, minus floor thickness, equals the fillet heights above top of beam.

DETAIL OF CONCRETE FILLET



DETAIL OF BEAM SPLICE



CROSS SECTION DETAIL

DECK FRAMING & DETAILS
BRIDGE OVER MIDDLE HENDERSON CREEK
S.A.T. ROUTE 3 SEC. 28-B.R.
WARREN COUNTY
STA. 829 + 24

DESIGNED: J. D. Nightingale	EXAMINED: W. B. Hanson
CHECKED: J. J. Vondra	PASSED: E. J. ...
DRAWN: M. V. C.	APPROVED: E. J. ...

FOR INFORMATION ONLY

REVISIONS	
NAME	DATE

ILLINOIS DEPARTMENT OF TRANSPORTATION
FOR INFORMATION ONLY
EXISTING S.N. 094-0002
MIDDLE HENDERSON CREEK
1954
SCALE: VERT. DATE
HORIZ. DATE
DRAWN BY
CHECKED BY

PLOT DATE: 7/11/2007
PLOT SCALE: 1/8\"/>