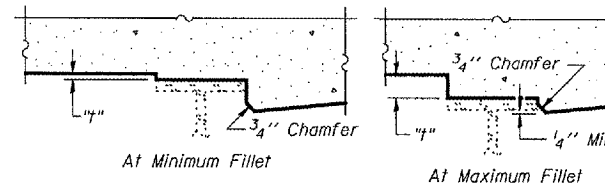


STATE OF ILLINOIS
DEPARTMENT OF TRANSPORTATION

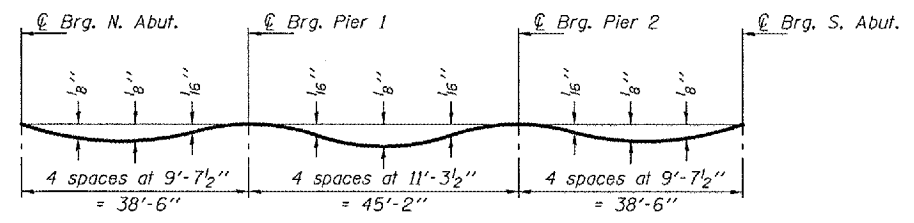


ROUTE NO. F.A.P. 310	SECTION 28BR-1	COUNTY WARREN	SHEET 47	SHEET 53	SHEET NO. 5
FED. ROAD DIST. NO. 7		ILLINOIS	FED. AID PROJECT		

Contract #88798

To determine "I": After all structural steel has been erected, elevations of the top flanges of the beams shall be taken at intervals shown below. These elevations subtracted from the "Theoretical Grade Elevations Adjusted for Dead Load Deflection" shown on sheet 6 of 16, minus slab thickness, equals the fillet heights "I" above top flange of beams.

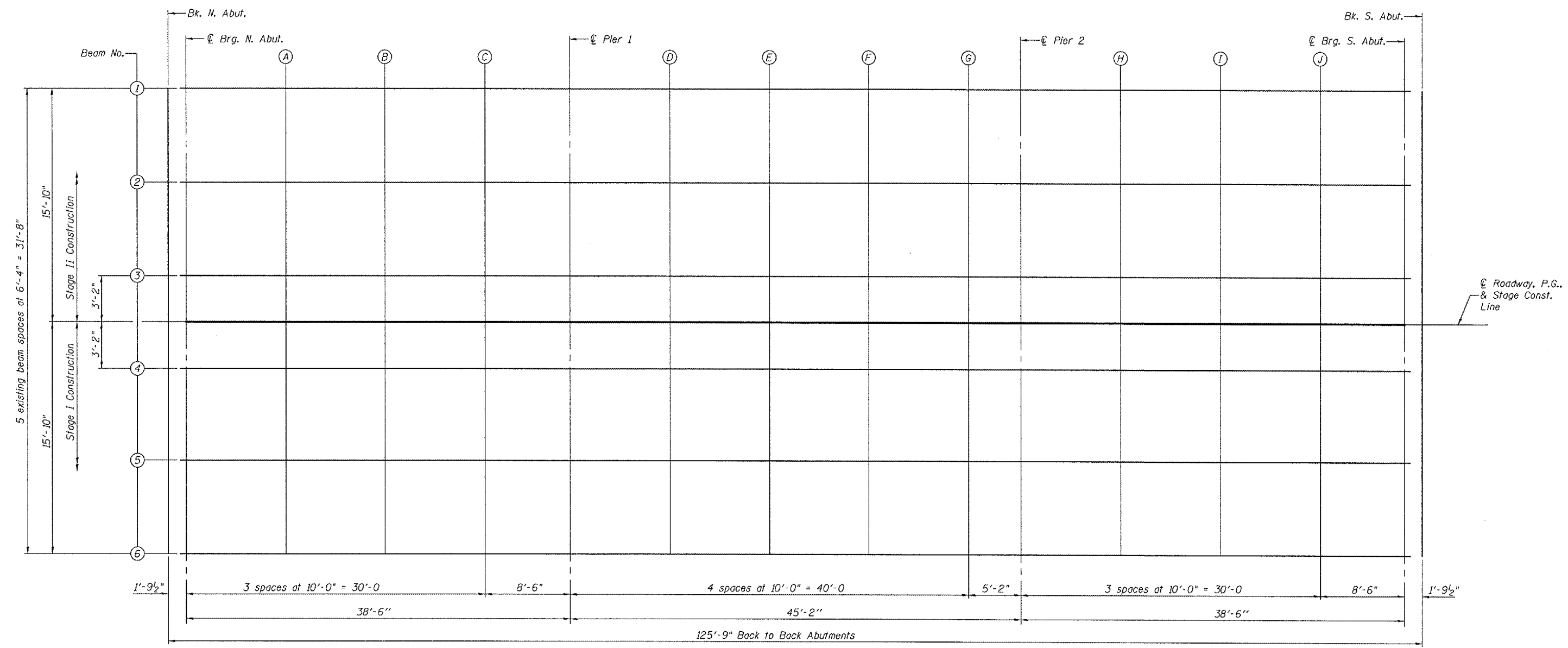
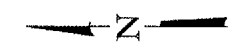
FILLET HEIGHTS



DEAD LOAD DEFLECTION DIAGRAM

(Includes weight of concrete only.)

Note: The above deflections are not to be used in the field if the engineer is working from the grade elevations adjusted for dead load deflections as shown on sheet 6 of 16.



PLAN

DESIGNED	Tom L. Kurtenbach
CHECKED	Alan M. Johnson
DRAWN	AMC Amber M. Seiber
CHECKED	TLK/AMJ

September 4, 2007
EXAMINED *Thomas J. Demagala*
PASSED *Ralph E. Anderson*
ENGINEER OF BRIDGES AND STRUCTURES

TOP OF SLAB ELEVATIONS
F.A.P. ROUTE 310 - SECTION 28BR-1
WARREN COUNTY
STATION 829+24.00
STRUCTURE NO. 094-0002