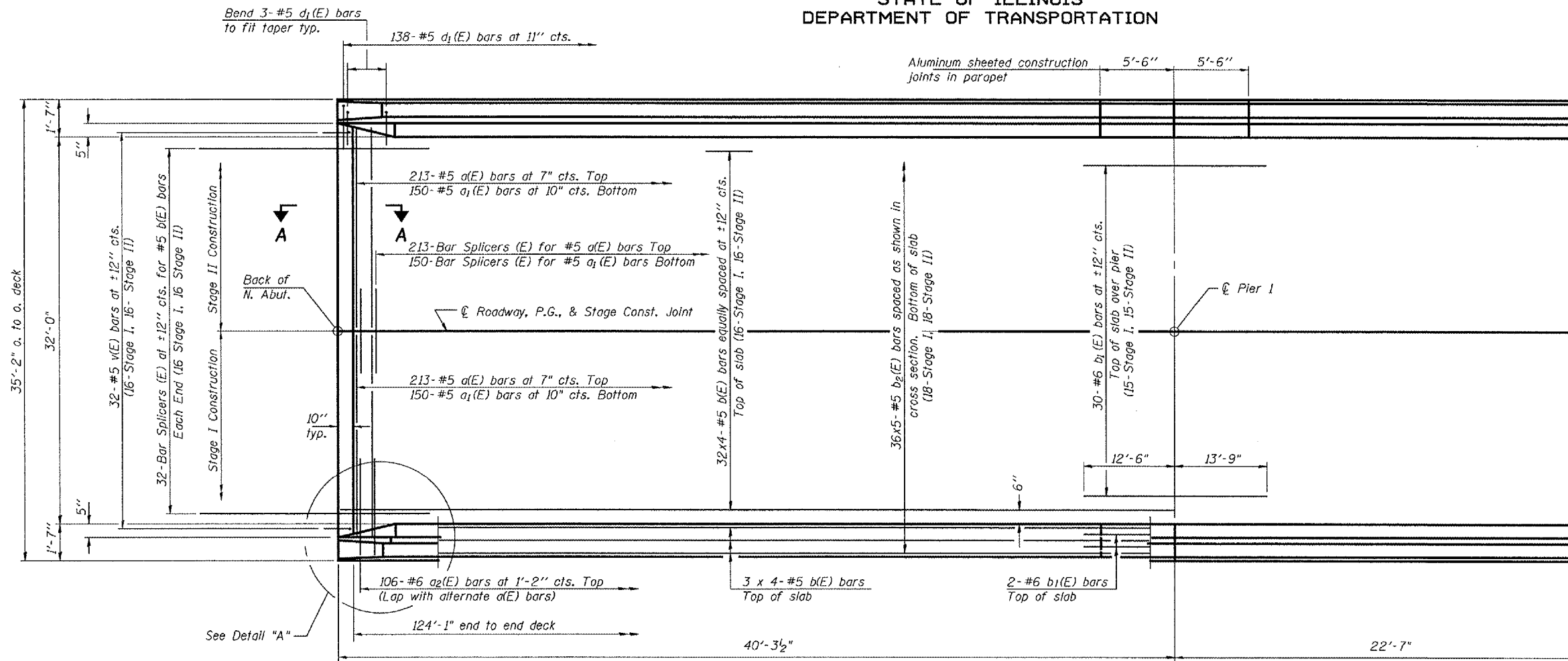


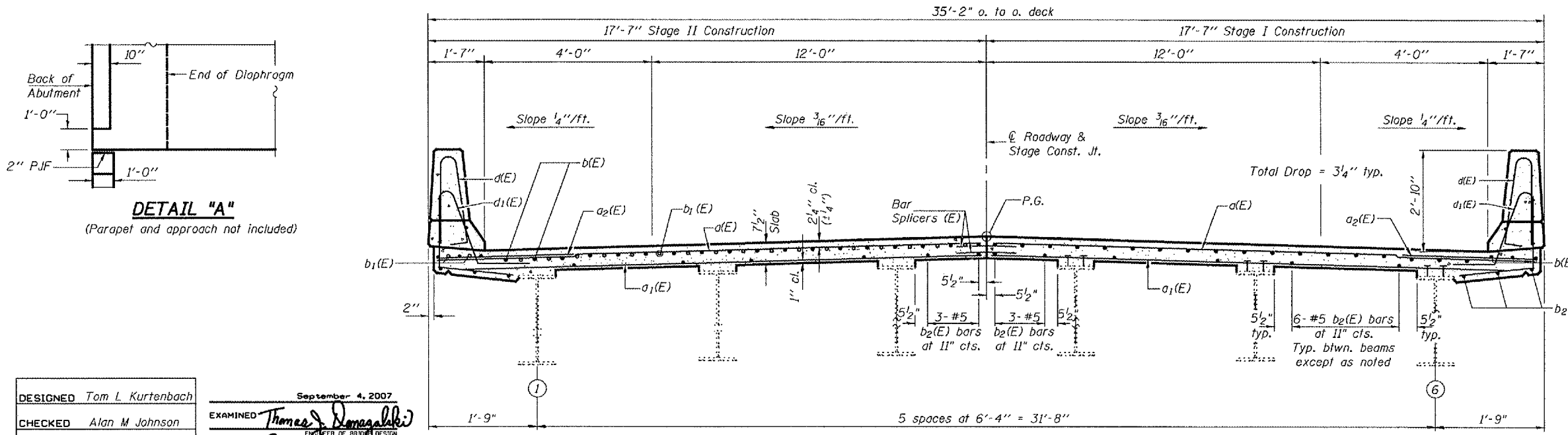
STATE OF ILLINOIS  
DEPARTMENT OF TRANSPORTATION

ROUTE NO.	SECTION	COUNTY	SHEETS	POST	SHEET NO. 7 16 SHEETS
F.A.P. 310	28BR-1	WARREN	97	55	
FED. ROAD DIST. NO. 7	ILLINOIS	FED. AID PROJECT			

Contract #88798



HALF PLAN



CROSS SECTION  
(Looking South)

MIN. BAR LAPS  
#5 = 1'-8"

Notes:  
See Sheet 8 of 16 for superstructure details and Bill of Material.  
Bars indicated thus 32 x 4-#5 etc. indicates 32 lines of bars with 4 lengths per line.  
See Sheet 8 of 16 for parapet reinforcement.  
For Section A-A and diaphragm details see sheet 9 of 16.  
See sheet 16 of 16 for Bar Splicer Details.

DESIGNED Tom L. Kurtenbach  
CHECKED Alan M. Johnson  
DRAWN BMC Amber M. Seiber  
CHECKED TLK/AMJ

September 4, 2007  
EXAMINED Thomas J. Domagalli  
PASSED Ralph E. Anderson

SUPERSTRUCTURE  
F.A.P. ROUTE 310 - SECTION 28BR-1  
WARREN COUNTY  
STATION 829+24.00  
STRUCTURE NO. 094-0002