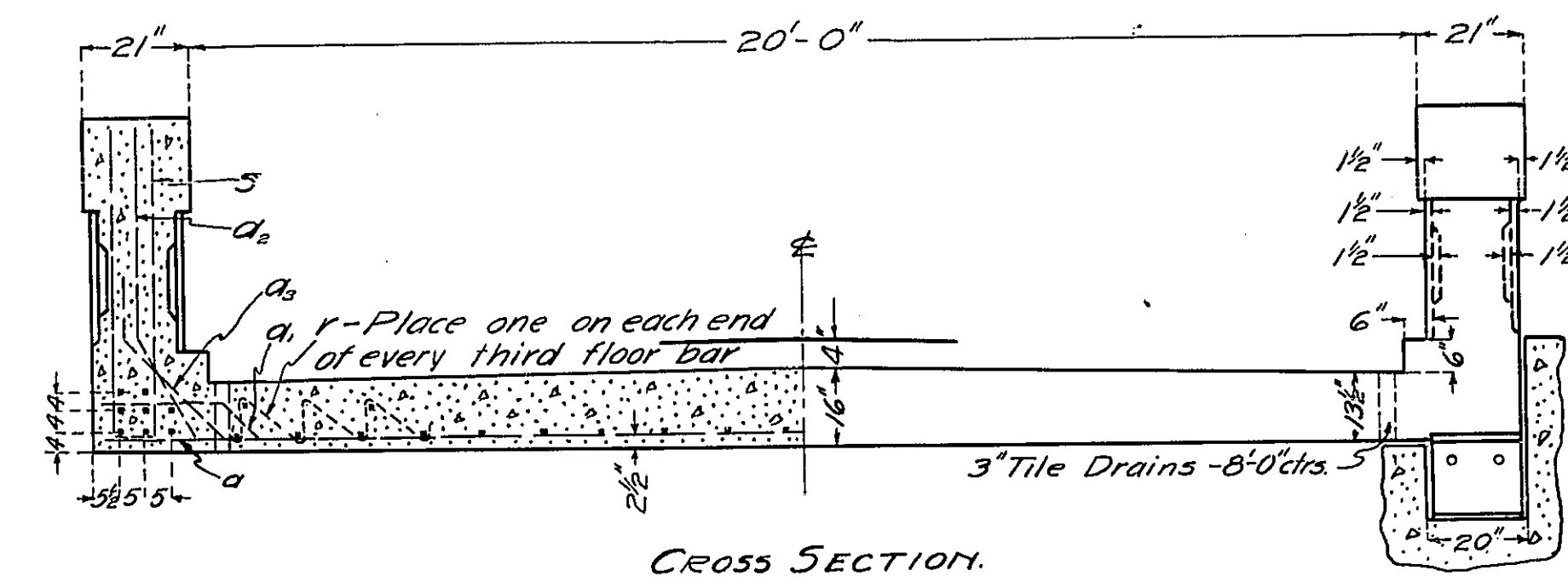
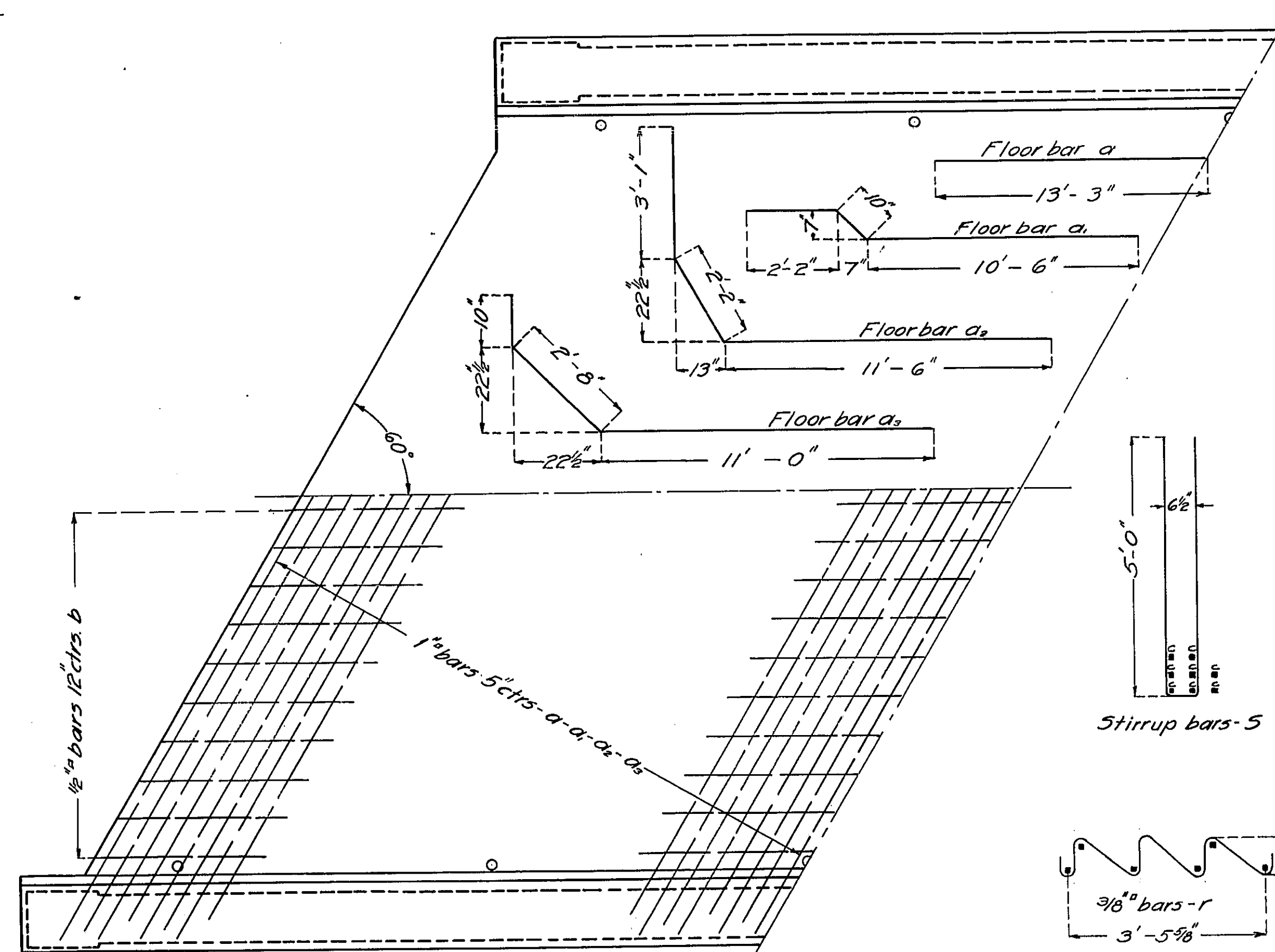
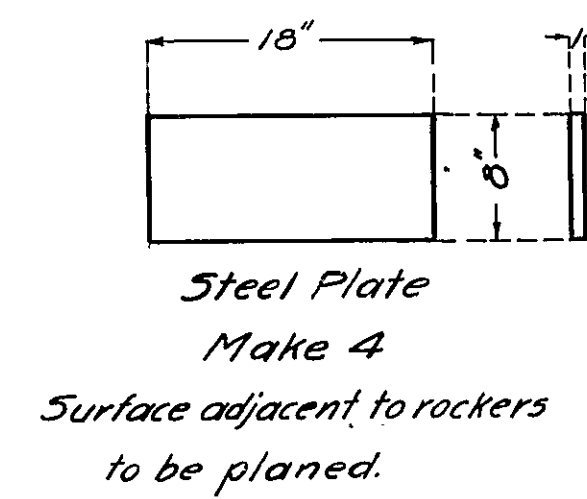
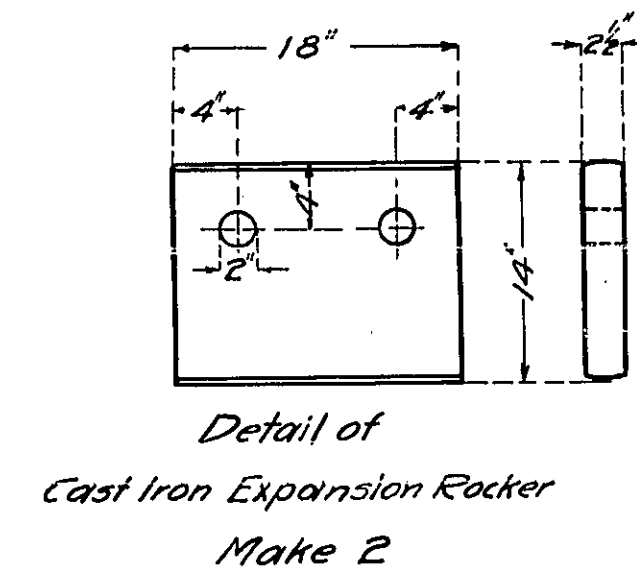
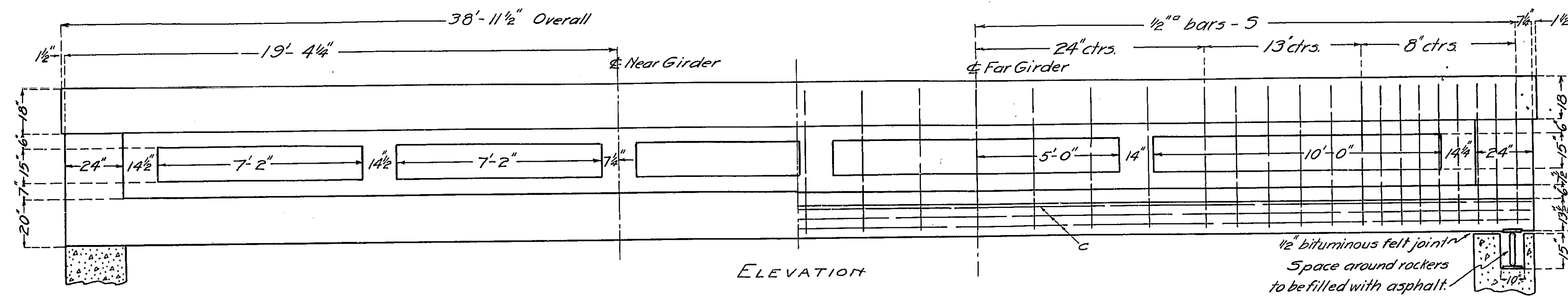


STATE OF ILLINOIS  
DEPARTMENT OF PUBLIC WORKS & BUILDINGS  
DIVISION OF HIGHWAYS

BOND ISSUE ROUTE NO.	COUNTY	SEC.	TOTAL SHEETS	SHEET NO.	SHEET No. 1
3	CASS	6	42	40	2 SHEETS



BILL OF MATERIAL

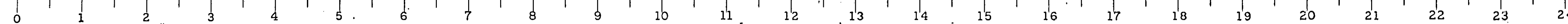
BAR	NUMBER	SIZE	LENGTH
a	19	1"	26'-6"
a1	19	1"	27'-0"
a2	19	1"	33'-6"
a3	19	1"	29'-0"
b	48	1/2"	19'-6"
c	16	1 1/2"	38'-6"
s	70	1/2"	10'-6"
r	50	3/8"	7'-0"
Reinforcing Steel			Lbs. 12,360
Concrete			Cu. Yds. 57.6
Weight of 2 rockers			Lbs. 328
Weight of 4 plates			Lbs. 163

Class A Concrete to be used throughout Proportions 1:2 1/2:4

COMPUTED	- W. G. F. Fleming
CHECKED	- S. A. Mackay
DRAWN	- W. G. F.
CHECKED	- S. A. M.
SPECIAL	ASSEMBLED -
	CHECKED -

EXAMINED Aug 11 1921  
  
 BRIDGE ENGINEER  
 PASSED A. J. O'Neil  
 ENGINEER OF DESIGN  
 APPROVED C. Olden  
 CHIEF HIGHWAY ENGINEER

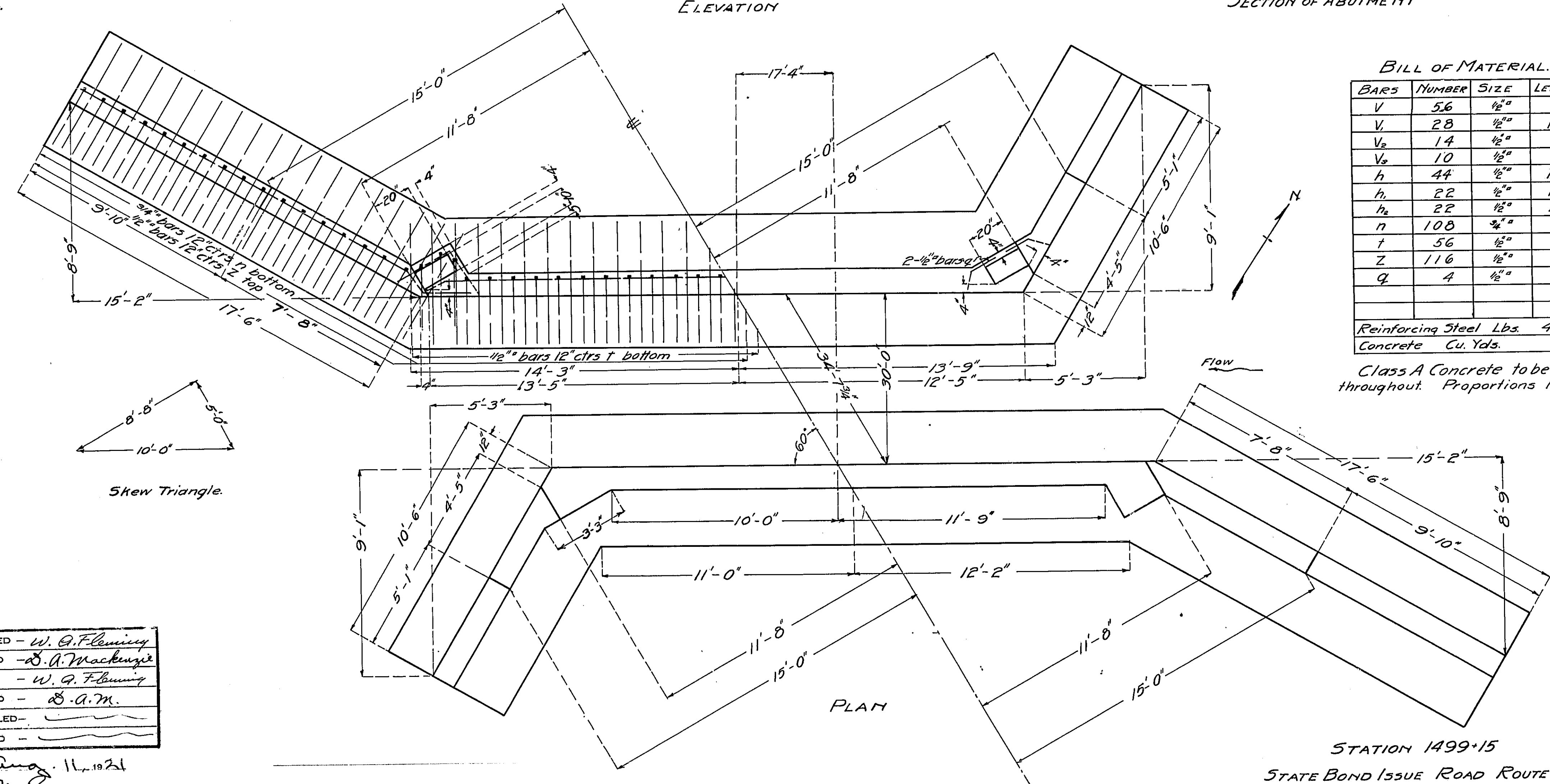
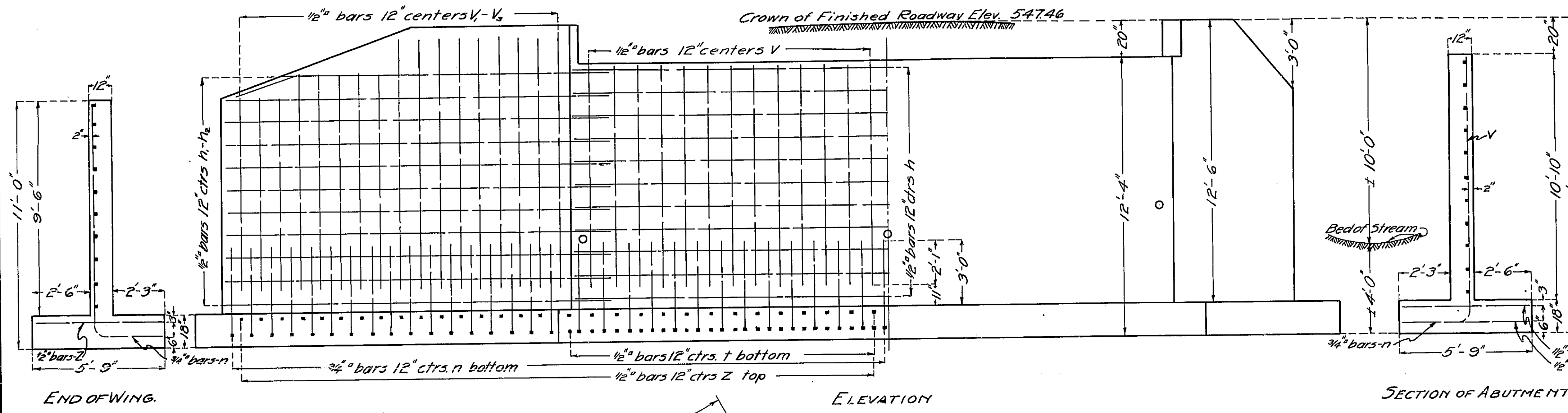
STATION 1499+15  
 STATE BOND ISSUE ROAD ROUTE 3  
 SECTION 6 CASS COUNTY



B.M. 127 Spike in Tel. Pole Left  
Sta. 1492+45 Elev. 597.48

STATE OF ILLINOIS  
DEPARTMENT OF PUBLIC WORKS & BUILDINGS  
DIVISION OF HIGHWAYS

BOND ISSUE	COUNTY	SEC.	TOTAL SHEETS	SHEET NO.	SHEET No. 2.
3	CASS	6	42	41	2 SHEETS.



**BILL OF MATERIAL.**

BARS	NUMBER	SIZE	LENGTH
V	56	1/2"	9'-6"
V	28	1/2"	11'-0"
V-1/2	14	1/2"	9'-6"
V-1/2	10	1/2"	8'-6"
h	44	1/2"	14'-6"
h	22	1/2"	12'-6"
h	22	1/2"	19'-6"
n	108	3/4"	7'-0"
t	56	1/2"	5'-6"
Z	116	1/2"	5'-6"
Q	4	1/2"	5'-0"

Reinforcing Steel Lbs. 4310  
Concrete Cu. Yds. 804

Class A Concrete to be used throughout. Proportions 1:2 1/2:4

COMPUTED	- W. G. Fleming
CHECKED	- R. A. Mackay
DRAWN	- W. G. Fleming
CHECKED	- R. A. M.
SPECIAL	ASSEMBLED -
	CHECKED -

EXAMINED Aug. 11, 1921  
H. F. Rucker  
BRIDGE ENGINEER

PASSED F. J. Skelton  
ENGINEER OF DESIGN

APPROVED C. Alder  
CHIEF HIGHWAY ENGINEER

STATION 1499+15  
STATE BOND ISSUE ROAD ROUTE 3  
SECTION 6 CASS CA

