

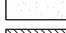

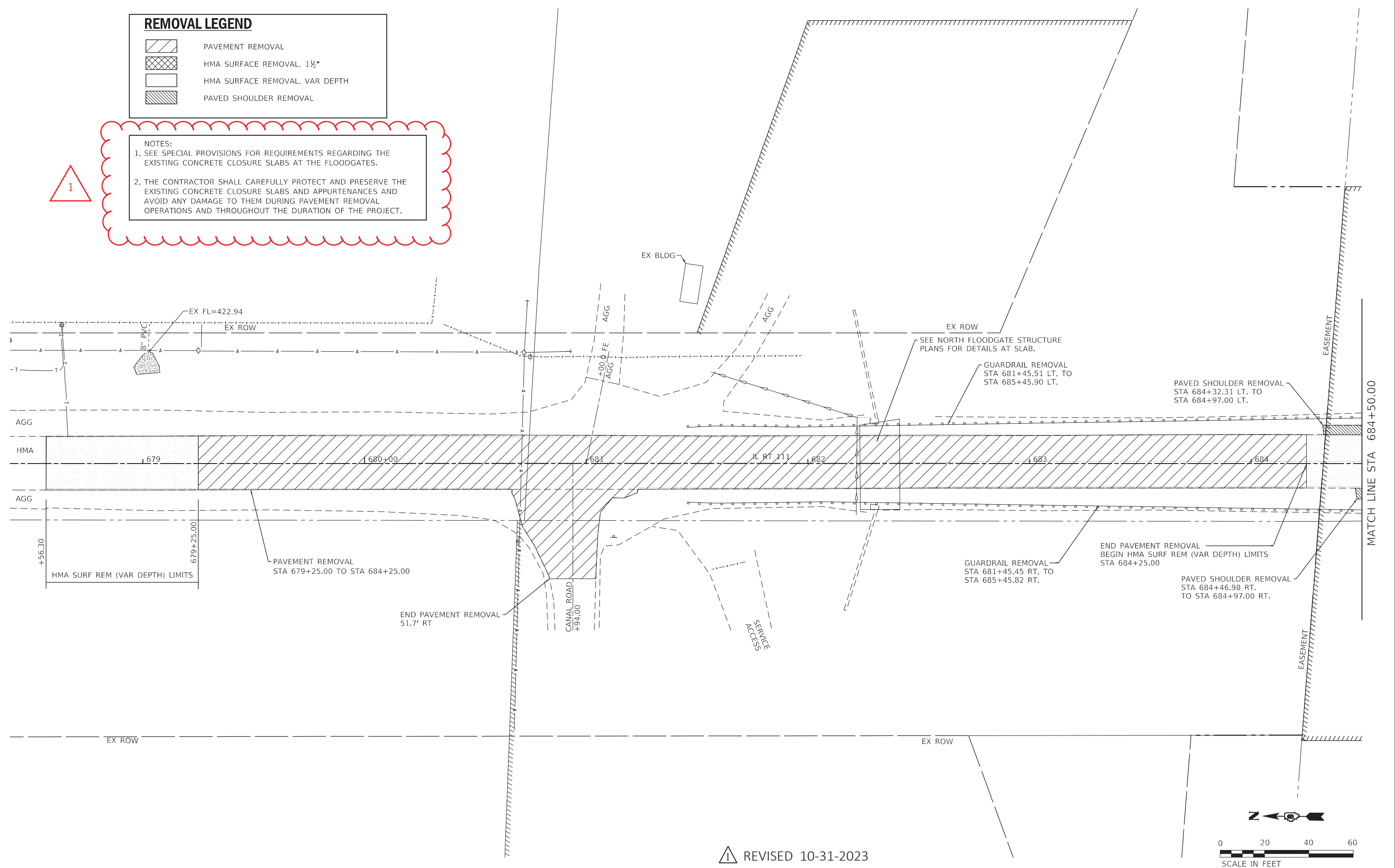


**REMOVAL LEGEND**

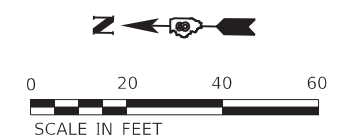
-  PAVEMENT REMOVAL
-  HMA SURFACE REMOVAL, 1 1/2"
-  HMA SURFACE REMOVAL, VAR DEPTH
-  PAVED SHOULDER REMOVAL

NOTES:  
 1. SEE SPECIAL PROVISIONS FOR REQUIREMENTS REGARDING THE EXISTING CONCRETE CLOSURE SLABS AT THE FLOODGATES.  
 2. THE CONTRACTOR SHALL CAREFULLY PROTECT AND PRESERVE THE EXISTING CONCRETE CLOSURE SLABS AND APPURTENANCES AND AVOID ANY DAMAGE TO THEM DURING PAVEMENT REMOVAL OPERATIONS AND THROUGHOUT THE DURATION OF THE PROJECT.

1



REVISÉ 10-31-2023



MODEL: Default; FILE NAME: P:\2022\02\08\59.10 - Carter-DDOT DB\_PTB\_194-054\_W04-1004\_Drawing\DWG\CAD\_Sheets\02\76N16-shr-removal.dgn



USER NAME = rstaley	DESIGNED - RWS	REVISED - #1 - 10/27/23
DRAWN - MRA	CHECKED - ERB	REVISED -
PLOT SCALE = 40.0000 ' / in.	DATE - 07/28/23	REVISED -
PLOT DATE = 10/26/2023		

**STATE OF ILLINOIS  
 DEPARTMENT OF TRANSPORTATION**

**REMOVAL PLAN**

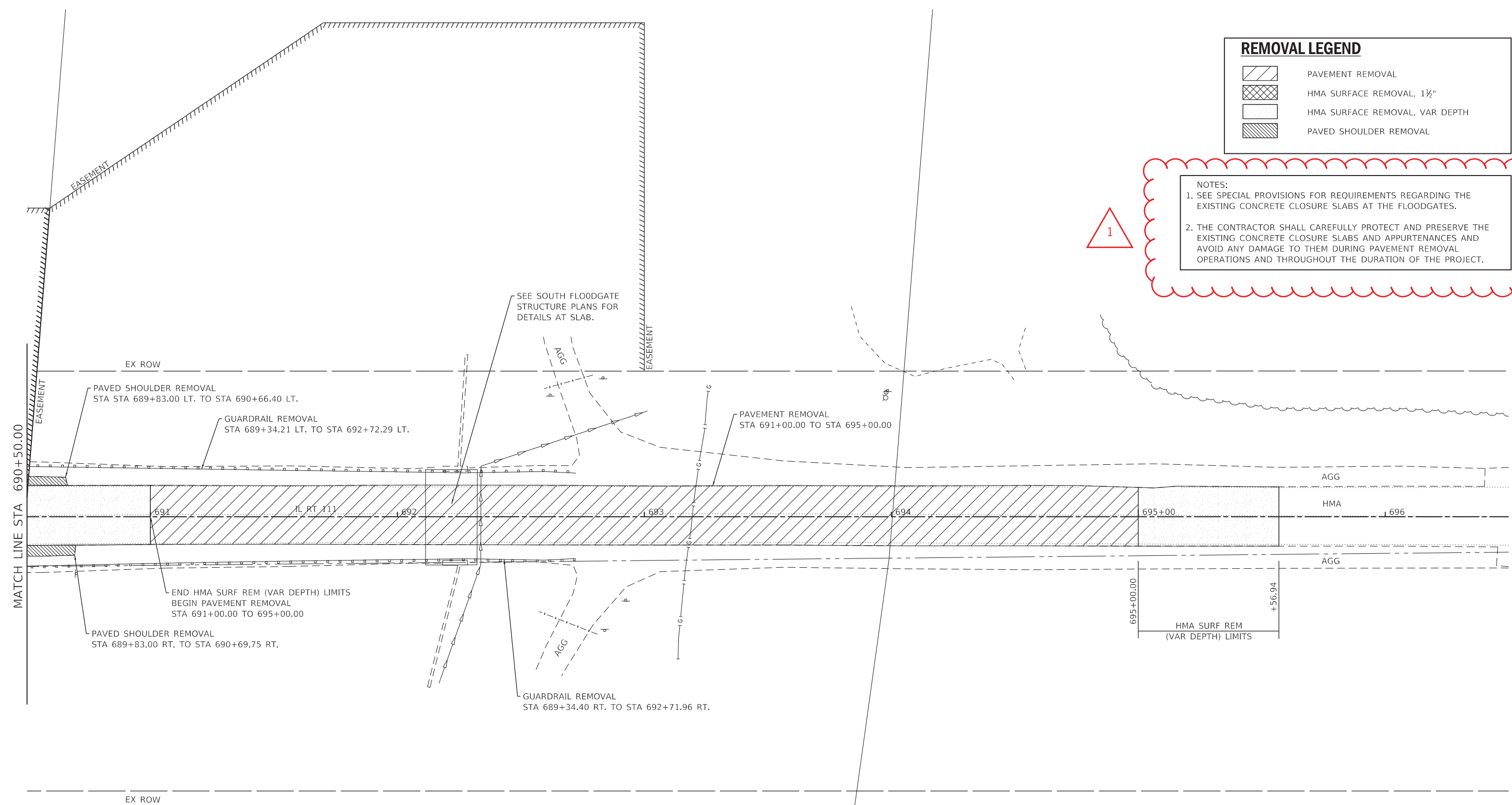
SCALE: 1"=20' SHEET 1 OF 3 SHEETS STA. 678+56.30 TO STA. 684+50.00

F.A.P. RTE.	SECTION	COUNTY	TOTAL SHEETS	SHEET NO.
582	5BR-2	MADISON	81	13
CONTRACT NO. 76N16				
ILLINOIS FED. AID PROJECT				

REMOVAL LEGEND	
	PAVEMENT REMOVAL
	HMA SURFACE REMOVAL, 1 1/2"
	HMA SURFACE REMOVAL, VAR DEPTH
	PAVED SHOULDER REMOVAL

NOTES:

- SEE SPECIAL PROVISIONS FOR REQUIREMENTS REGARDING THE EXISTING CONCRETE CLOSURE SLABS AT THE FLOODGATES.
- THE CONTRACTOR SHALL CAREFULLY PROTECT AND PRESERVE THE EXISTING CONCRETE CLOSURE SLABS AND APPURTENANCES AND AVOID ANY DAMAGE TO THEM DURING PAVEMENT REMOVAL OPERATIONS AND THROUGHOUT THE DURATION OF THE PROJECT.



△ REVISED 10-31-2023

MODEL: Default; FILE: Name: 10/26/2023 10:08:59.10 - C:\p\1004\Drawings\DWG\CAD\_Sheets\0276116-shr-removal.dgn



USER NAME = rstaley	DESIGNED - RWS	REVISED - #1 - 10/27/23
PLOT SCALE = 40.0000 ' / in.	DRAWN - MRA	REVISED -
PLOT DATE = 10/26/2023	CHECKED - ERB	REVISED -
	DATE - 07/28/23	REVISED -

**STATE OF ILLINOIS  
DEPARTMENT OF TRANSPORTATION**

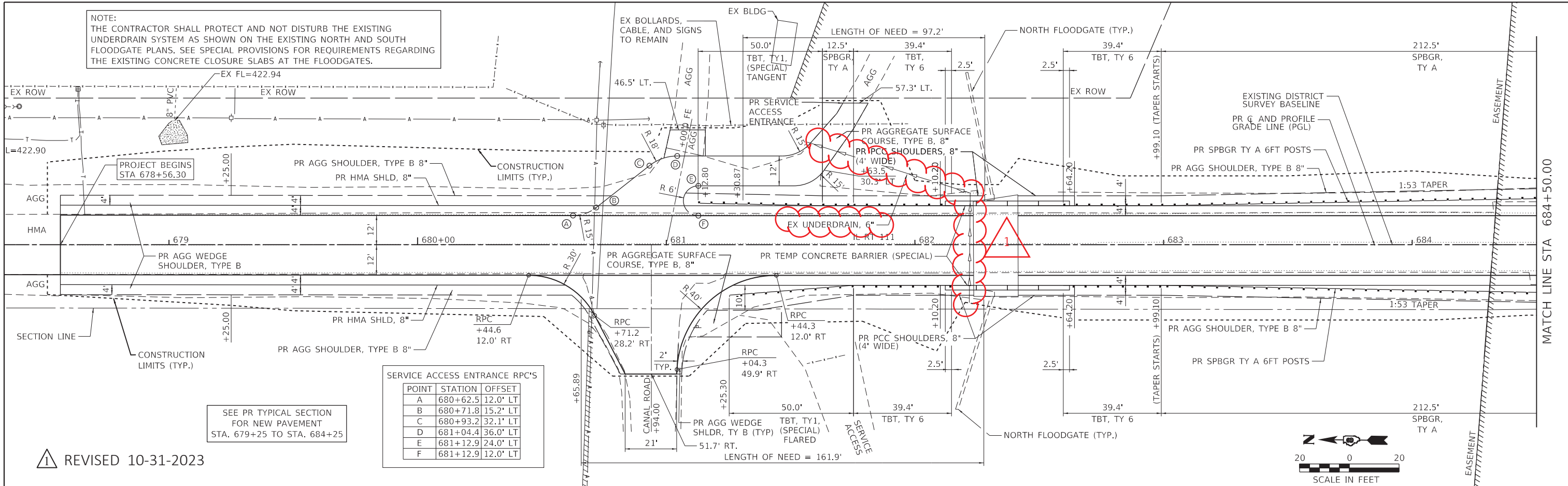
**REMOVAL PLAN**

SCALE: 1"=20' SHEET 3 OF 3 SHEETS STA. 690+50.00 TO STA. 695+56.94

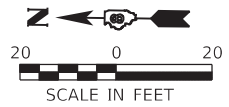
F.A.P. RTE.	SECTION	COUNTY	TOTAL SHEETS	SHEET NO.
582	5BR-2	MADISON	81	15
CONTRACT NO. 76N16				
ILLINOIS FED. AID PROJECT				

NOTE:  
THE CONTRACTOR SHALL PROTECT AND NOT DISTURB THE EXISTING UNDERDRAIN SYSTEM AS SHOWN ON THE EXISTING NORTH AND SOUTH FLOODGATE PLANS. SEE SPECIAL PROVISIONS FOR REQUIREMENTS REGARDING THE EXISTING CONCRETE CLOSURE SLABS AT THE FLOODGATES.

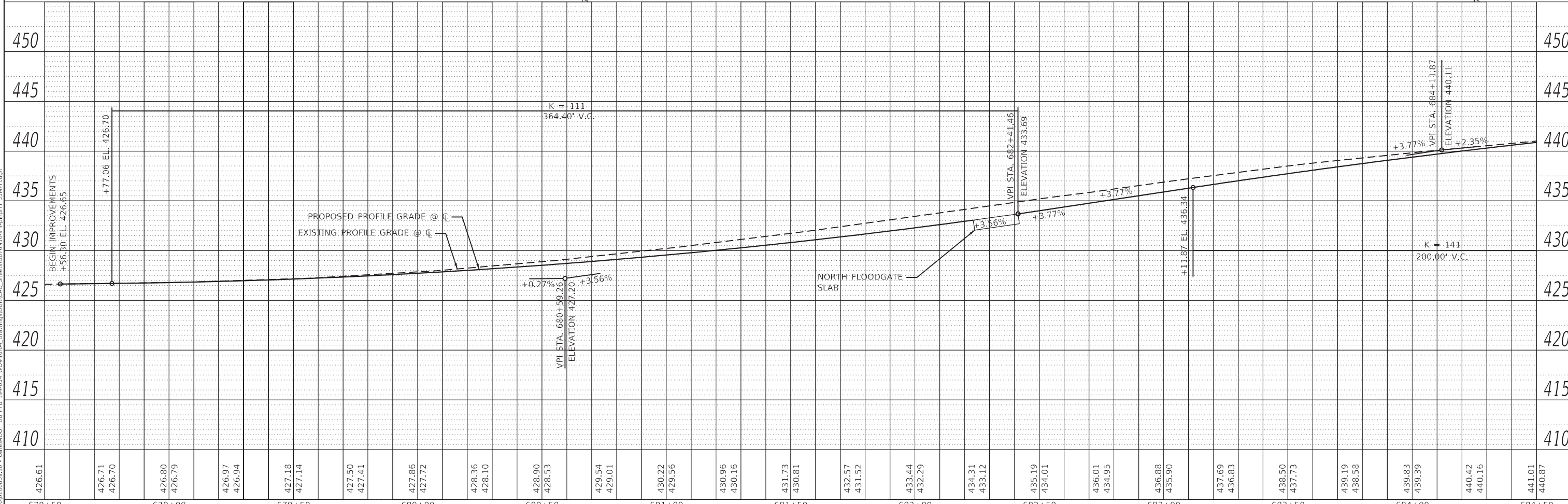
PLAN	SURVEYED	DATE
	PLOTTED	
	ALIGNED	
	CHECKED	
	FILED	
	NO.	



REVIS 10-31-2023



PROFILE	SURVEYED	DATE
	PLOTTED	
	GRADES	
	CHECKED	
	STRUCTURE	
	NOTATIONS	
	NO.	



MODEL: Default  
FILE NAME: J:\2022\07\06\9510 - Dunes\DOT DB PFD 194-051 WOP\1004 Drawings\DRG\CAD\_Sheets\DOT\76N16-16-16.dgn

**Farnsworth Group**  
2709 McGRAW DRIVE  
BLOOMINGTON, ILLINOIS 61704  
(309) 663-8435 / Info@fw.com

USER NAME = rstaley  
DESIGNED - RWS  
DRAWN - MRA  
CHECKED - ERB  
DATE - 07/28/23

REVIS - #1 - 10/27/23  
REVIS -  
REVIS -  
REVIS -

STATE OF ILLINOIS  
DEPARTMENT OF TRANSPORTATION

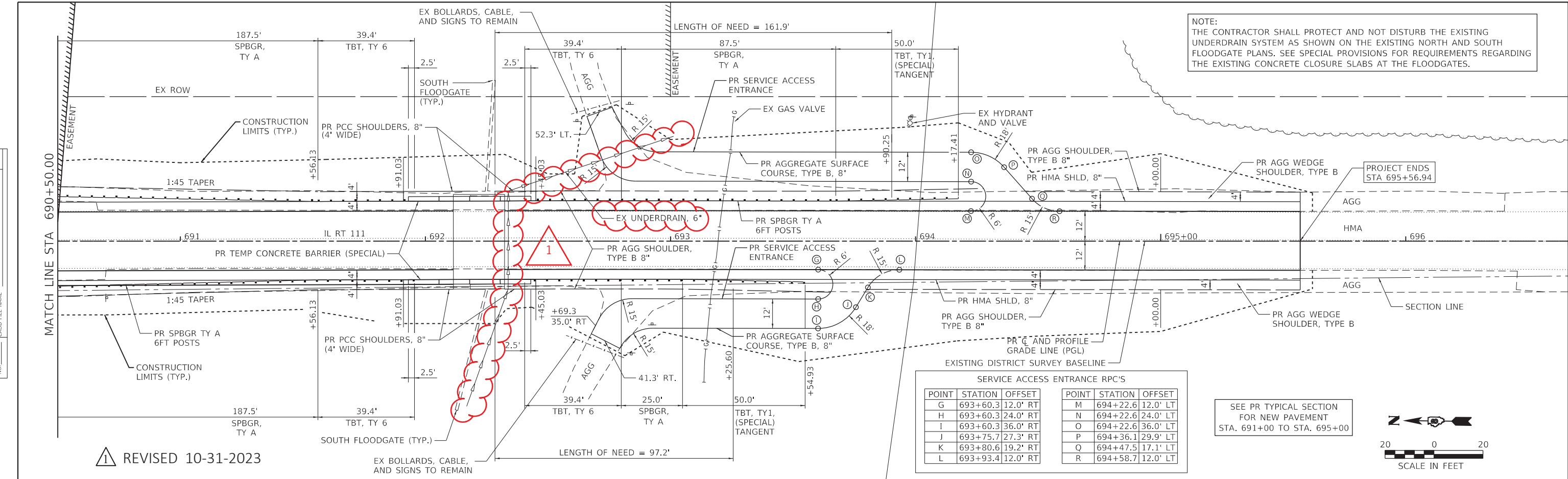
PLAN AND PROFILE

SCALE: 1"=20' SHEET 1 OF 3 SHEETS STA. 678+56.30 TO STA. 684+50.00

F.A.P. RTE.	SECTION	COUNTY	TOTAL SHEETS	SHEET NO.
582	5BR-2	MADISON	81	16
CONTRACT NO. 76N16				
ILLINOIS FED. AID PROJECT				

PLAN	SURVEYED	DATE
	PLOTTED	BY
	ALIGNED	CHECKED
	NOTE BOOK	FILE NAME
	NO.	

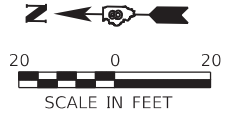
PROFILE	SURVEYED	DATE
	PLOTTED	BY
	GRADES CHECKED	CHECKED
	STRUCTURE NOTATIONS	FILE NAME
	NO.	



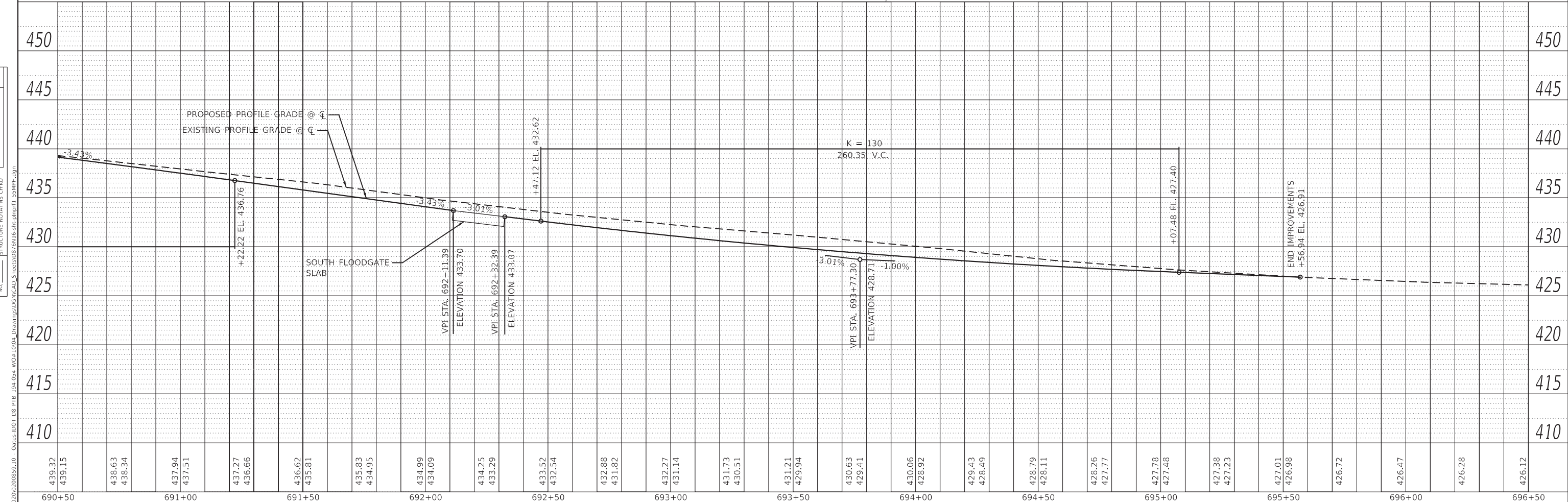
SERVICE ACCESS ENTRANCE RPC'S

POINT	STATION	OFFSET
G	693+60.3	12.0' RT
H	693+60.3	24.0' RT
I	693+60.3	36.0' RT
J	693+75.7	27.3' RT
K	693+80.6	19.2' RT
L	693+93.4	12.0' RT
M	694+22.6	12.0' LT
N	694+22.6	24.0' LT
O	694+22.6	36.0' LT
P	694+36.1	29.9' LT
Q	694+47.5	17.1' LT
R	694+58.7	12.0' LT

SEE PR TYPICAL SECTION FOR NEW PAVEMENT STA. 691+00 TO STA. 695+00



REVISD 10-31-2023



690+50	691+00	691+50	692+00	692+50	693+00	693+50	694+00	694+50	695+00	695+50	696+00	696+50																																	
439.32	439.15	438.63	438.34	437.94	437.51	437.27	436.66	436.62	435.81	435.83	434.95	434.99	434.09	434.25	433.29	433.52	432.54	432.88	431.82	432.27	431.14	431.73	430.51	431.21	429.94	430.63	429.41	431.06	428.92	429.43	428.49	428.79	428.11	428.26	427.77	427.78	427.48	427.38	427.23	427.01	426.98	426.72	426.47	426.28	426.12

**Farnsworth GROUP**  
2709 McGRAW DRIVE  
BLOOMINGTON, ILLINOIS 61704  
(309) 663-8435 / info@fw.com

USER NAME = rstaley	DESIGNED - RWS	REVISED - #1 - 10/27/23
	DRAWN - MRA	REVISED -
PLOT SCALE = 40.0000' / in.	CHECKED - ERB	REVISED -
PLOT DATE = 10/26/2023	DATE - 07/28/23	REVISED -

**STATE OF ILLINOIS  
DEPARTMENT OF TRANSPORTATION**

**PLAN AND PROFILE**

SCALE: 1"=20'    SHEET 3 OF 3 SHEETS    STA. 690+50.00 TO STA. 695+56.94

F.A.P. RTE. 582	SECTION 5BR-2	COUNTY MADISON	TOTAL SHEETS 81	SHEET NO. 18
CONTRACT NO. 76N16			ILLINOIS FED. AID PROJECT	