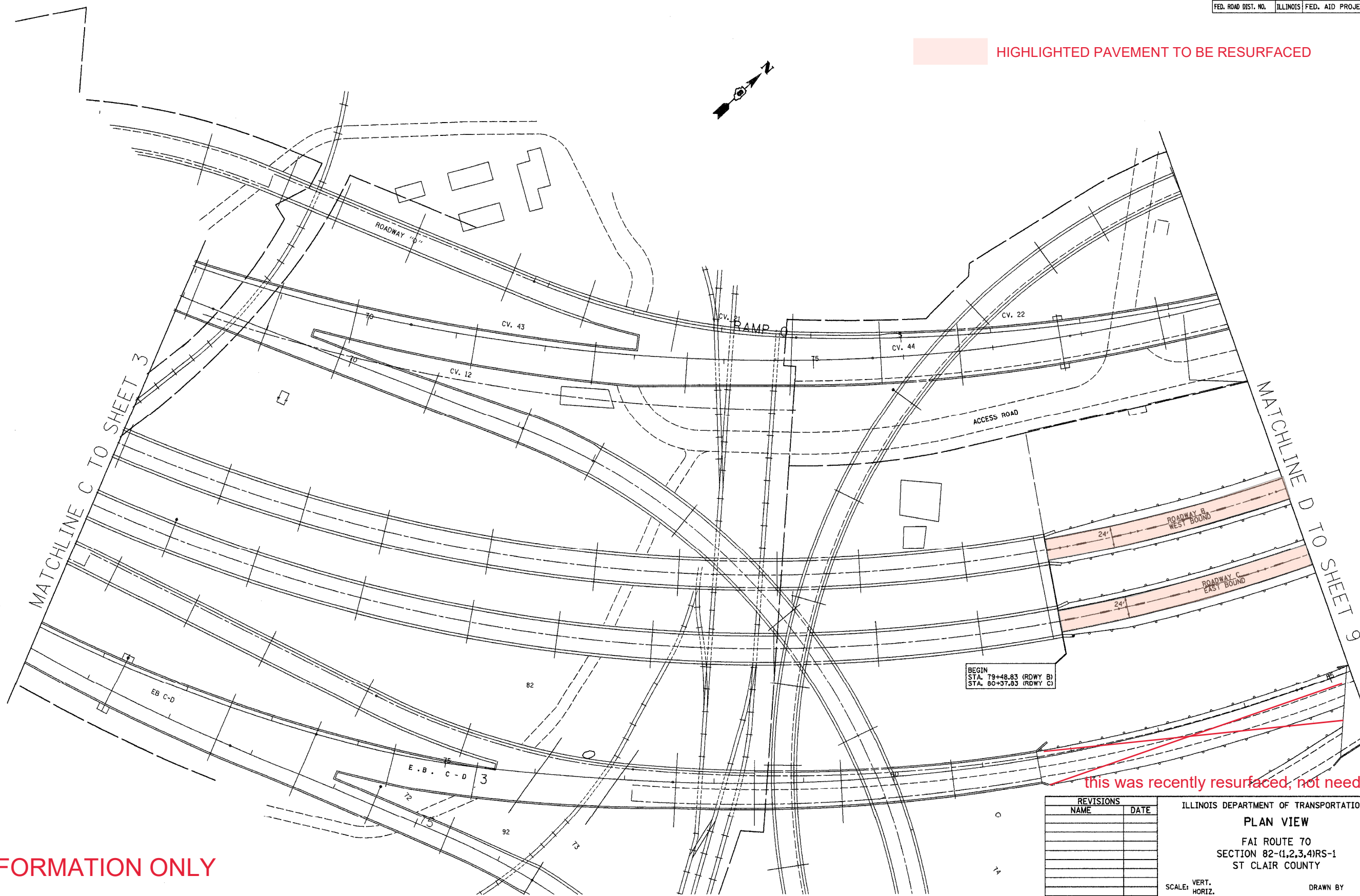


CONTRACT NO. 76A72

F.A.I. RTE.	SECTION	COUNTY	TOTAL SHEETS	SHEET NO.
70	82-(1,2,3,4)RS-1	ST CLAIR	43	8
STA.		TO STA.		
FED. ROAD DIST. NO.		ILLINOIS	FED. AID PROJECT	

HIGHLIGHTED PAVEMENT TO BE RESURFACED



BEGIN
 STA. 79+48.83 (RDWY B)
 STA. 80+37.83 (RDWY C)

REVISIONS	
NAME	DATE

ILLINOIS DEPARTMENT OF TRANSPORTATION
PLAN VIEW
 FAI ROUTE 70
 SECTION 82-(1,2,3,4)RS-1
 ST CLAIR COUNTY

SCALE: VERT. _____
 HORIZ. _____
 DATE _____

DRAWN BY _____
 CHECKED BY _____

FOR INFORMATION ONLY

PLT DATE = 2/16/2007
 PLT SCALE = 50.0000' / IN.
 REFERENCE = #REF#

F.A.I. RTE.	SECTION	COUNTY	TOTAL SHEETS	SHEET NO.
70	82-(1,2,3,4)RS-1	ST CLAIR	43	9
STA. TO STA.		FED. ROAD DIST. NO. ILLINOIS FED. AID PROJECT		

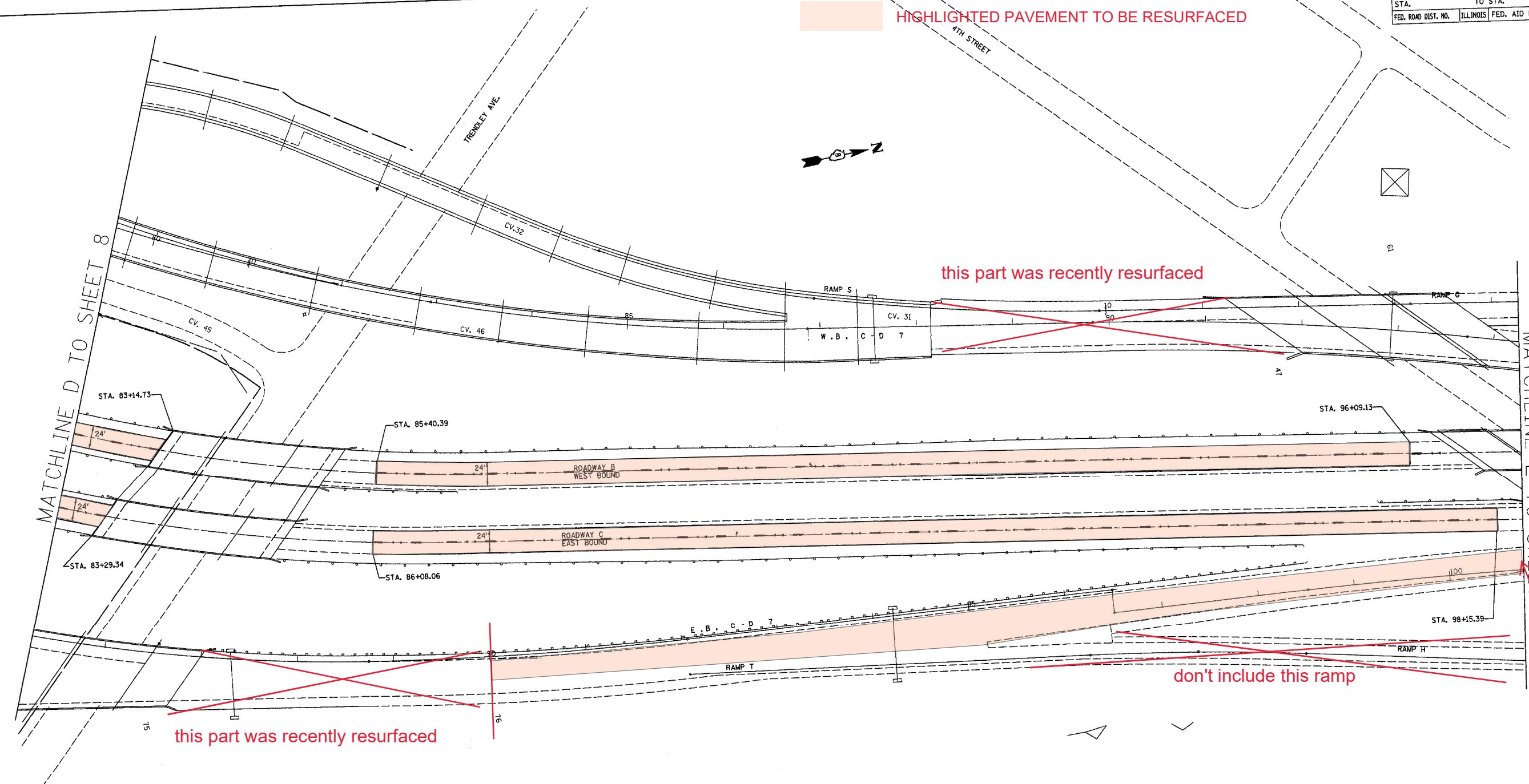
HIGHLIGHTED PAVEMENT TO BE RESURFACED



this part was recently resurfaced

MATCHLINE D TO SHEET 8

MATCHLINE E TO SHEET 10



this part was recently resurfaced

don't include this ramp

stop at bridge approach pavement

STRUCTURE OMISSION
 STA 83+29.34 TO STA 86+08.06 EASTBOUND
 STA 83+14.73 TO STA 85+40.39 WESTBOUND

FOR INFORMATION ONLY

REVISIONS	
NAME	DATE

ILLINOIS DEPARTMENT OF TRANSPORTATION
PLAN VIEW
 FAI ROUTE 70
 SECTION 82-(1,2,3,4)RS-1
 ST CLAIR COUNTY

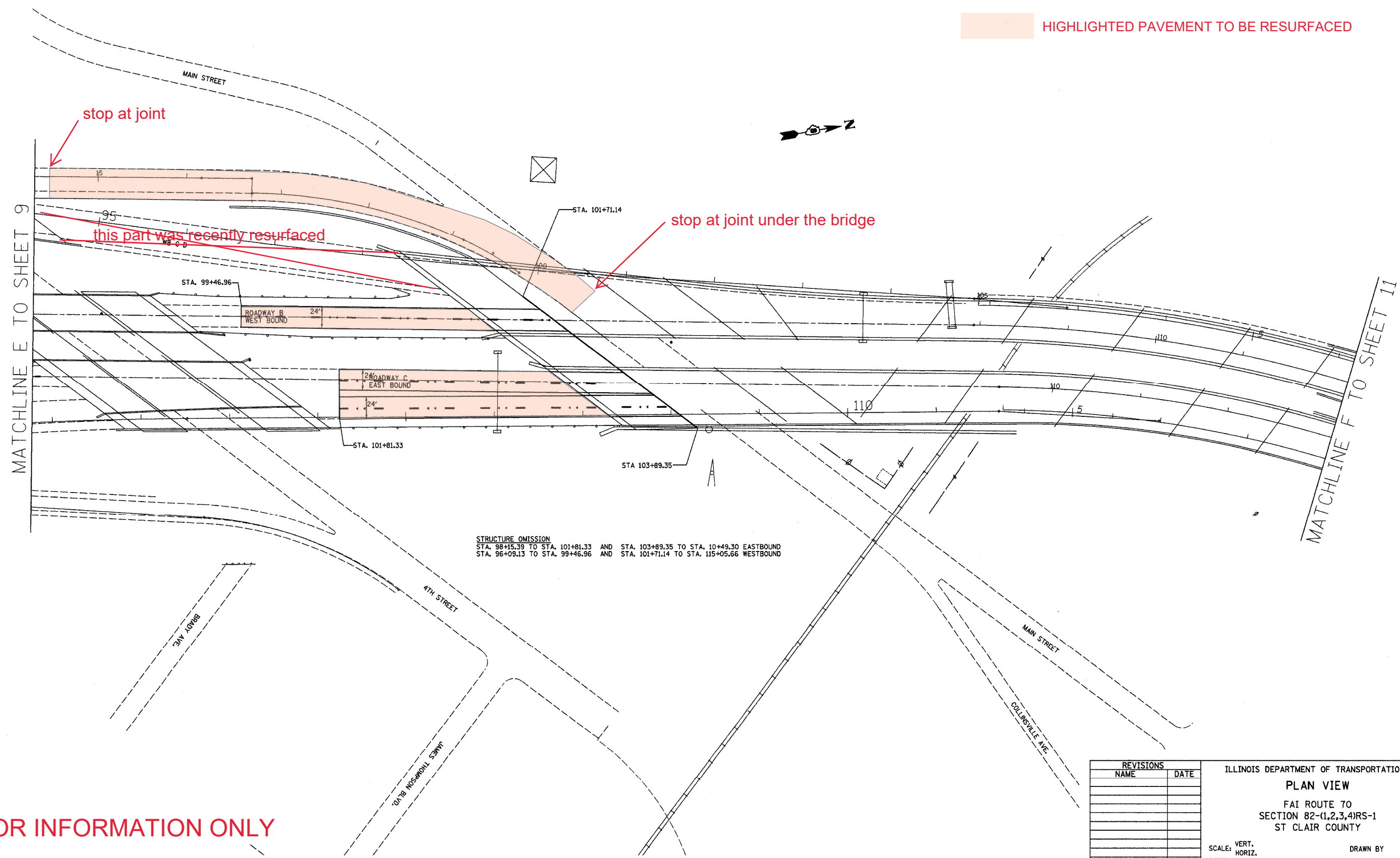
SCALE: VERT. _____
 HORIZ. _____
 DATE _____

DRAWN BY _____
 CHECKED BY _____

PLOT DATE = 2/16/2007
 PLOT SCALE = 50.0000' / 1" IN.
 REFERENCE = SHEET #

F.A.I. RTE.	SECTION	COUNTY	TOTAL SHEETS	SHEET NO.
70	82-(1,2,3,4)RS-1	ST CLAIR	43	10
STA.		TO STA.		
FED. ROAD DIST. NO.		ILLINOIS FED. AID PROJECT		

HIGHLIGHTED PAVEMENT TO BE RESURFACED



STRUCTURE OMISSION
 STA. 98+15.39 TO STA. 101+81.33 AND STA. 103+89.35 TO STA. 10+49.30 EASTBOUND
 STA. 96+09.13 TO STA. 99+46.96 AND STA. 101+71.14 TO STA. 115+05.66 WESTBOUND

FOR INFORMATION ONLY

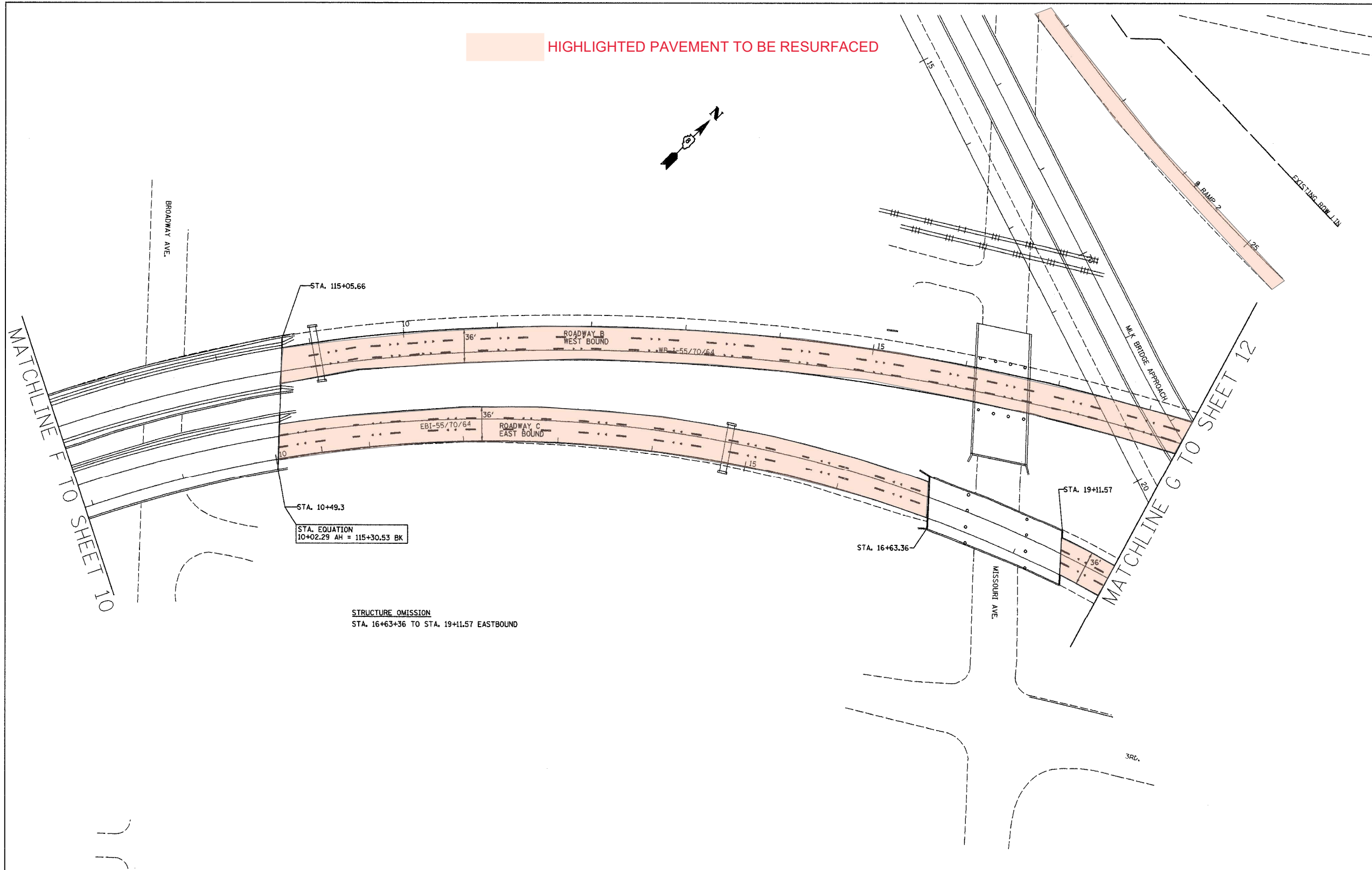
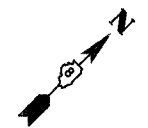
PLT DATE = 2/16/2007
 PLT SCALE = 50.0000' / IN.
 REFERENCE = #REF*

REVISIONS	
NAME	DATE

ILLINOIS DEPARTMENT OF TRANSPORTATION
PLAN VIEW
 FAI ROUTE 70
 SECTION 82-(1,2,3,4)RS-1
 ST CLAIR COUNTY
 SCALE: VERT. _____
 DATE: _____ HORIZ. _____
 DRAWN BY _____
 CHECKED BY _____

F.A.I. RTE.	SECTION	COUNTY	TOTAL SHEETS	SHEET NO.
70	82-(1,2,3,4)RS-1	ST CLAIR	43	11
STA. TO STA.		FED. ROAD DIST. NO. ILLINOIS FED. AID PROJECT		

HIGHLIGHTED PAVEMENT TO BE RESURFACED



STA. EQUATION
10+02.29 AH = 115+30.53 BK

STRUCTURE OMISSION
STA. 16+63+36 TO STA. 19+11.57 EASTBOUND

FOR INFORMATION ONLY

DATE = 2/16/2007
PLOT SCALE = 1/8" = 100'
REFERENCE = *REF*

REVISIONS	
NAME	DATE

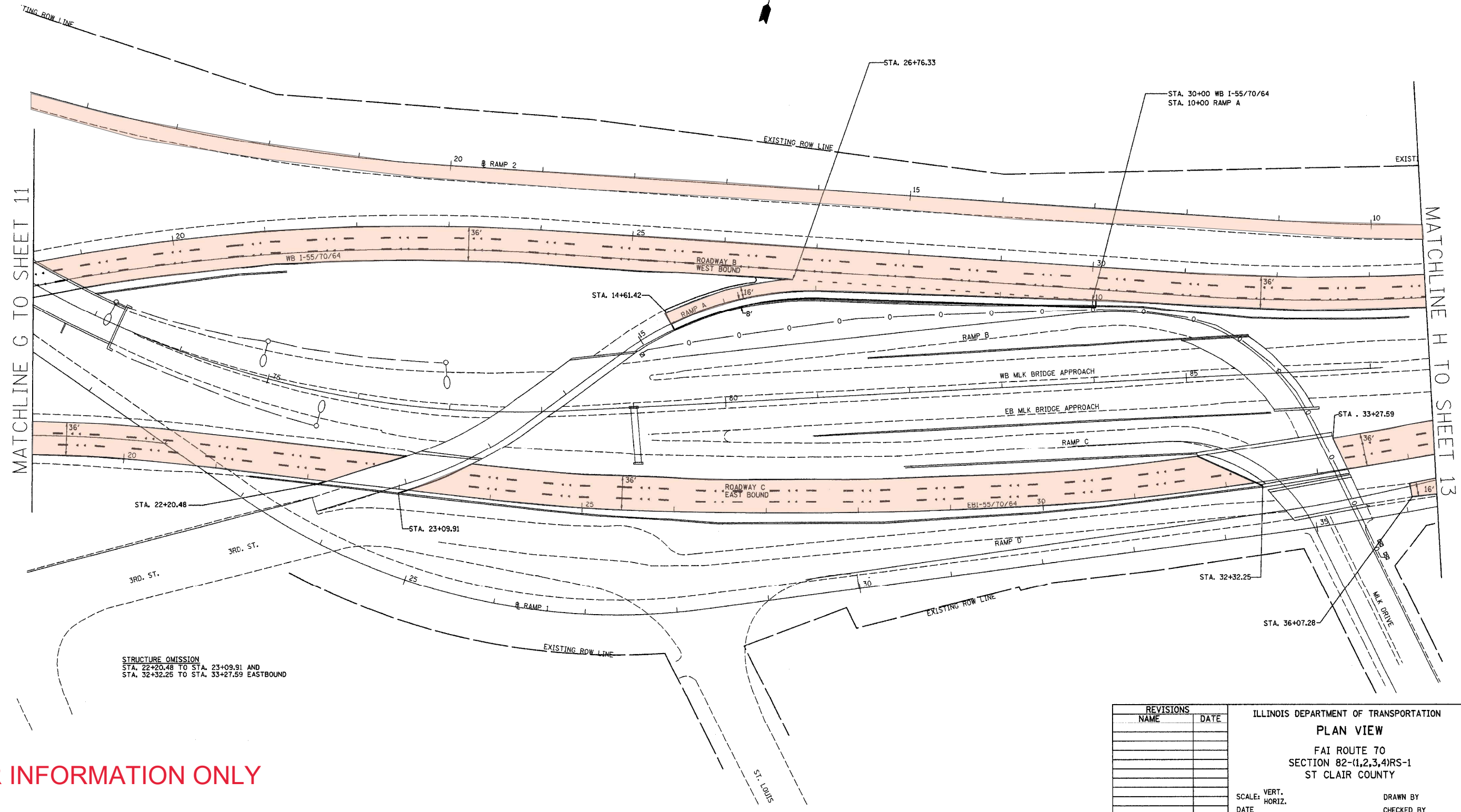
ILLINOIS DEPARTMENT OF TRANSPORTATION
PLAN VIEW
 FAI ROUTE 70
 SECTION 82-(1,2,3,4)RS-1
 ST CLAIR COUNTY

SCALE: VERT. DATE
 HORIZ. CHECKED BY

DRAWN BY

F.A.I. R.T.E.	SECTION	COUNTY	TOTAL SHEETS	SHEET NO.
70	82-(1,2,3,4)RS-1	ST CLAIR	43	12
STA. TO STA.		TO STA.		
FED. ROAD DIST. NO.		ILLINOIS	FED. AID PROJECT	

HIGHLIGHTED PAVEMENT TO BE RESURFACED



FOR INFORMATION ONLY

PLOT DATE = 2/16/2007
 PLOT SCALE = 9000000 / IN.
 REFERENCE = #REF*

STRUCTURE OMISSION
 STA. 22+20.48 TO STA. 23+09.91 AND
 STA. 32+32.25 TO STA. 33+27.59 EASTBOUND

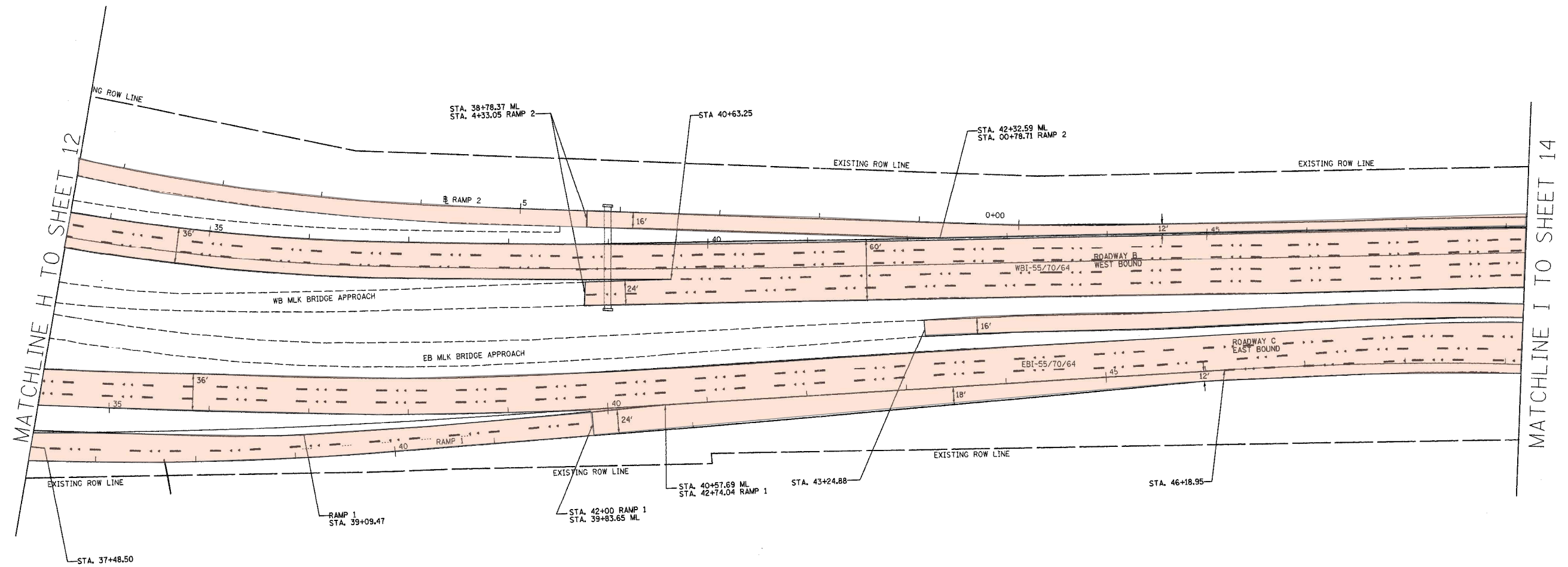
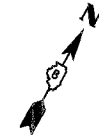
REVISIONS	
NAME	DATE

ILLINOIS DEPARTMENT OF TRANSPORTATION
PLAN VIEW
 FAI ROUTE 70
 SECTION 82-(1,2,3,4)RS-1
 ST CLAIR COUNTY

SCALE: VERT. DRAWN BY
 HORIZ. CHECKED BY
 DATE

CONTRACT NO. 76A72				
FAI RTE.	SECTION	COUNTY	TOTAL SHEETS	SHEET NO.
70	82-(1,2,3,4)RS-1	ST CLAIR	43	13
STA.		TO STA.		
FED. ROAD DIST. NO.		ILLINOIS FED. AID PROJECT		

HIGHLIGHTED PAVEMENT TO BE RESURFACED



MATCHLINE H TO SHEET 12

MATCHLINE I TO SHEET 14

FOR INFORMATION ONLY

PLOT DATE = 2/16/2007
 FILE NAME = 040008 / IN.
 REFERENCE = REF*

REVISIONS	
NAME	DATE

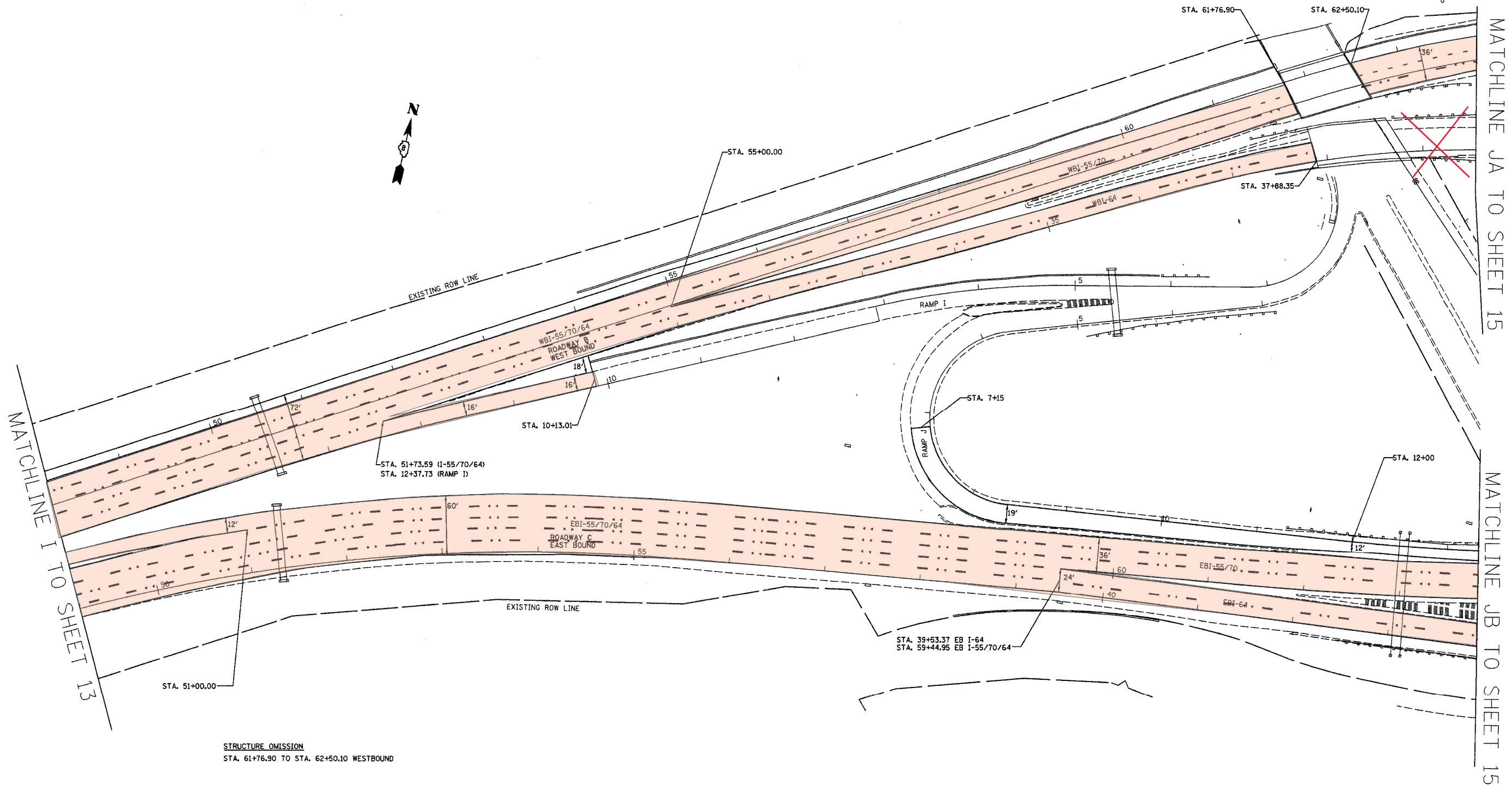
ILLINOIS DEPARTMENT OF TRANSPORTATION
PLAN VIEW
 FAI ROUTE 70
 SECTION 82-(1,2,3,4)RS-1
 ST CLAIR COUNTY

SCALE: VERT. _____
 HORIZ. _____

DATE _____ DRAWN BY _____
 CHECKED BY _____

F.A.I. RTE.	SECTION	COUNTY	TOTAL SHEETS	SHEET NO.
70	82-(1,2,3,4)RS-1	ST CLAIR	43	14
STA. TO STA.		TO STA.		
FED. ROAD DIST. NO.		ILLINOIS FED. AID PROJECT		

HIGHLIGHTED PAVEMENT TO BE RESURFACED



STRUCTURE OMISSION
STA. 61+76.90 TO STA. 62+50.10 WESTBOUND

FOR INFORMATION ONLY

PLOT DATE = 2/16/2007
FILE NAME = c:\p\proj\82\82\plan\p1a4387.dgn
PLOT SCALE = 50.0000' / IN.
REFERENCE = SHEET

REVISIONS	
NAME	DATE

ILLINOIS DEPARTMENT OF TRANSPORTATION
PLAN VIEW
FAI ROUTE 70
SECTION 82-(1,2,3,4)RS-1
ST CLAIR COUNTY
SCALE: VERT. / HORIZ.
DATE / DRAWN BY / CHECKED BY

F.A.I. RTE.	SECTION	COUNTY	TOTAL SHEETS	SHEET NO.
70	82-(1,2,3,4)RS-1	ST CLAIR	43	15
STA. TO STA.		TO STA.		
FED. ROAD DIST. NO.		ILLINOIS FED. AID PROJECT		

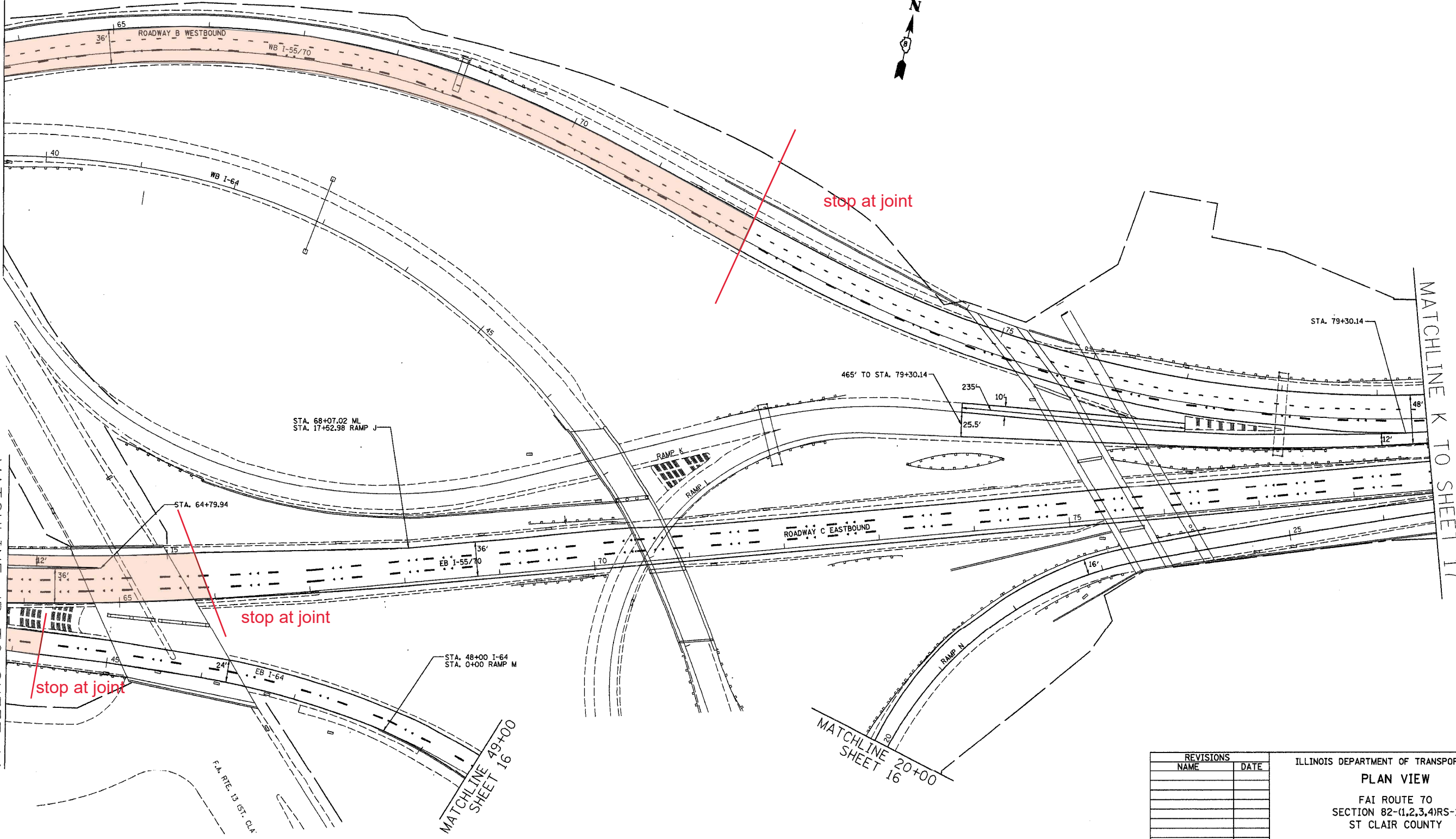
HIGHLIGHTED PAVEMENT TO BE RESURFACED



MATCHLINE JA TO SHEET 14

MATCHLINE JB TO SHEET 14

MATCHLINE K TO SHEET 17



PLOT DATE = 2/16/2007
 PLOT SCALE = 1/4" = 100'
 REFERENCE = #REF#

REVISIONS	
NAME	DATE

ILLINOIS DEPARTMENT OF TRANSPORTATION
PLAN VIEW
 FAI ROUTE 70
 SECTION 82-(1,2,3,4)RS-1
 ST CLAIR COUNTY

SCALE: VERT. DRAWN BY
 HORIZ. CHECKED BY
 DATE

MATCHLINE 49+00
SHEET 16

MATCHLINE 20+00
SHEET 16