

**INDEX OF SHEETS**

- 1 COVER SHEET
- 2 HIGHWAY STANDARDS, GENERAL NOTES, & COMMITMENTS
- 3-5\* SUMMARY OF QUANTITIES
- 6-7 TYPICAL SECTIONS
- 8-10 SCHEDULE OF QUANTITIES
- 11 LOCATION MAP
- 12-13 INTERSTATE WEEKEND CLOSURE DETAILS

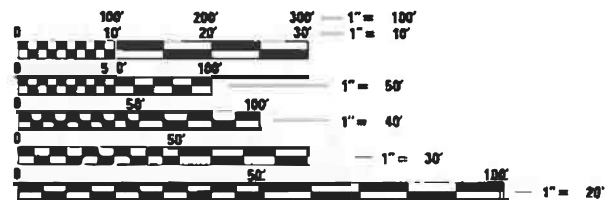
\* SHEET 5 HAS BEEN DELETED

FOR LIST OF HIGHWAY STANDARDS, SEE SHEET NO.2

FUNCTIONAL CLASSIFICATION INTERSTATE

**TRAFFIC DATA**

2019 ADT = 105300 (ACTUAL)  
 2023 ADT = 107400 (ESTIMATED)  
 2043 ADT = 118200 (ESTIMATED)  
 SU = 2.4% MU = 7.5%



FULL SIZE PLANS HAVE BEEN PREPARED USING STANDARD ENGINEERING SCALES. REDUCED SIZED PLANS WILL NOT CONFORM TO STANDARD SCALES. IN MAKING MEASUREMENTS ON REDUCED PLANS, THE ABOVE SCALES MAY BE USED.

**J.U.L.I.E.**  
 JOINT UTILITY LOCATING INFORMATION FOR EXCAVATORS  
 1-800-892-0123  
 OR 811

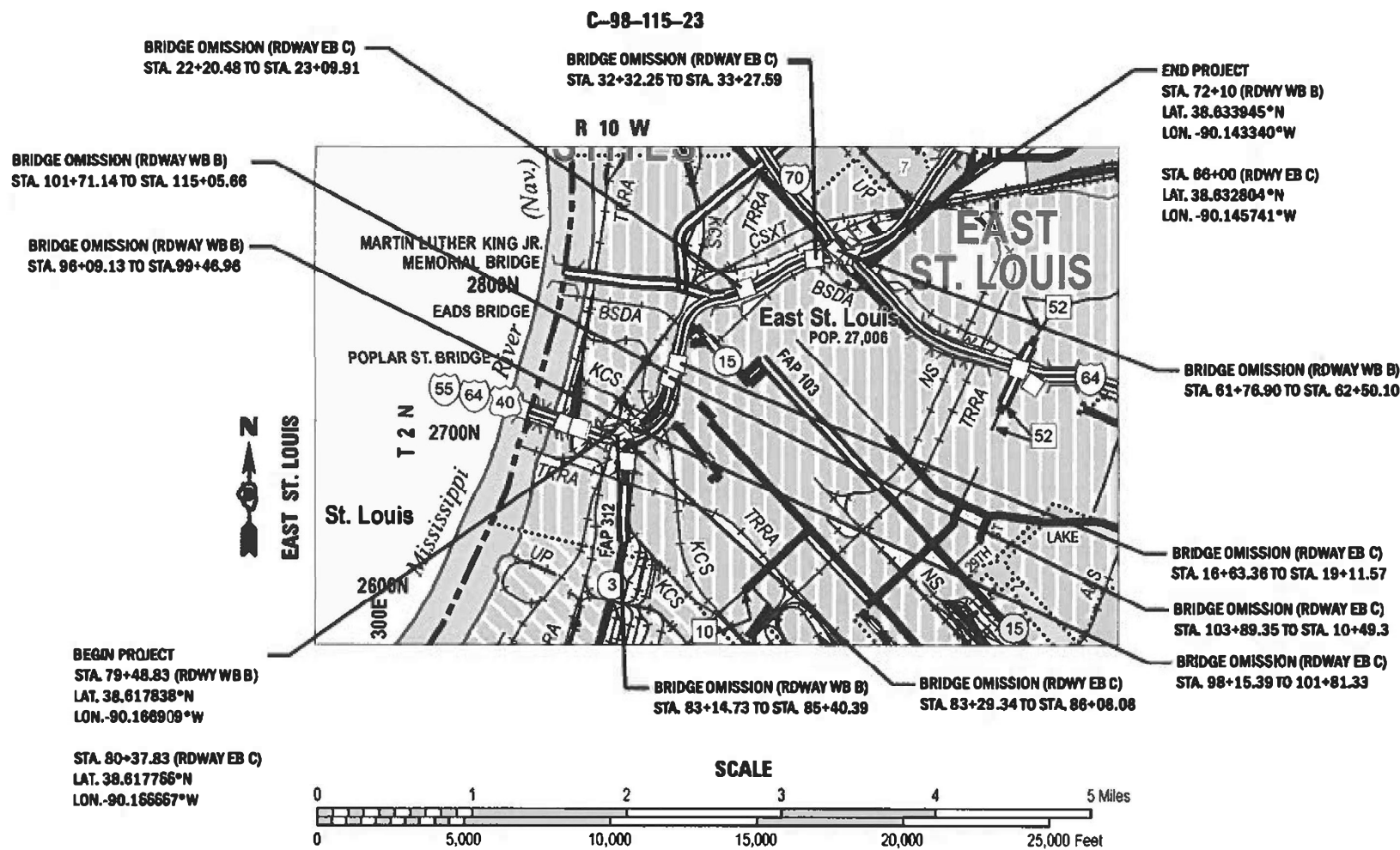
**PROJECT ENGINEER: BILLIE OWEN**  
**PROJECT MANAGER: MEIWU AN**

**CONTRACT NO. 76T39**

**STATE OF ILLINOIS**  
**DEPARTMENT OF TRANSPORTATION**

**PROPOSED**  
**HIGHWAY PLANS**

**F.A.I. ROUTE 70 (I-55/64/US 40)**  
**SECTION 82-7RS**  
**RESURFACING-STANDARD OVERLAY**  
**I-055/064/US 040 FROM 0.9 MILE OF MISSISSIPPI RIVER TO I-64 (TRI-LEVEL) INTCHG IN EAST ST LOUIS**  
**ST. CLAIR COUNTY**



GROSS LENGTH	RDWY B	=	10,032.00 FEET = 1.900 MILES
	RDWY C	=	9,134.400 FEET = 1.730 MILES
NET LENGTH	RDWY B	=	8061.000 FEET = 1.530 MILES
	RDWY C	=	69947.00 FEET = 1.320 MILES

F.A.I. RTE.	SECTION	COUNTY	TOTAL SHEETS	SHEET NO.
070	82 7RS	ST. CLAIR	13*	1

\* 13 - 1 = 12 TOTAL SHEETS



STATE OF ILLINOIS  
 DEPARTMENT OF TRANSPORTATION

SUBMITTED AUGUST 24 2023

*[Signature]*  
 REGIONAL ENGINEER

October 13, 2023

*[Signature]*  
 ENGINEER OF DESIGN AND ENVIRONMENT

October 13, 2023

*[Signature]*  
 DIRECTOR OF HIGHWAYS PROJECT IMPLEMENTATION

**PRINTED BY THE AUTHORITY OF THE STATE OF ILLINOIS**

**HIGHWAY STANDARDS**

000001-08	STANDARD SYMBOLS, ABBREVIATIONS AND PATTERNS
001006	DECIMAL OF AN INCH AND OF A FOOT
420001-10	PAVEMENT JOINTS
442001-04	CLASS A PATCHES
701101-05	OFF-RD OPERATIONS, MULTILANE, 15' (4.5m) TO 24" (600mm) FROM PAVEMENT EDGE
701400-11	APPROACH TO LANE CLOSURE, FREEWAY/EXPRESSWAY
701428-01	TRAFFIC CONTROL SETUP AND REMOVAL FREEWAY/EXPRESSWAY
701446-11	TWO LANE CLOSURE, FREEWAY/EXPRESSWAY
701451-05	RAMP CLOSURE FREEWAY/EXPRESSWAY
701901-08	TRAFFIC CONTROL DEVICES
780001-05	TYPICAL PAVEMENT MARKINGS

**GENERAL NOTES**

1. AGENCIES KNOWN TO HAVE FACILITIES WITHIN THE PROJECT AREA ARE AS FOLLOWS:

UTILITY	ABOVE GROUND	BELOW GROUND
AMEREN ILLINOIS (GAS AND ELECTRIC)	X	X
AT&T Illinois	X	X
Charter Communications, Inc.	X	X
Clearwave Fiber LLC	X	X
City of East St. Louis		X
City of East St. Louis	X	X
Illinois American Water Company		X
Level 3 Communications, LLC	X	X
Verizon Business	X	X
Spire STL Pipeline LLC		X
Windstream KDL, Inc.	X	X
Zayo Group LLC	X	X

2. THE DEPARTMENT STRONGLY ENCOURAGES THE PRIME CONTRACTOR AND THEIR APPROVED SUB-CONTRACTORS TO HIRE MINORITY, WOMEN AND DISADVANTAGED INDIVIDUALS FROM ITS FEDERALLY FUNDED HIGHWAY CONSTRUCTION CAREERS TRAINING PROGRAM (HCCTP) TO HELP MEET WORKFORCE AND TRAINEE GOALS. THIS PROGRAM IS TRAINING MINORITIES, WOMEN AND DISADVANTAGED INDIVIDUALS IN HIGHWAY CONSTRUCTION-RELATED SKILLS, E.G., MATH FOR THE TRADES, JOB READINESS, TECHNICAL SKILLS COURSEWORK (CARPENTRY, CONCRETE FLATWORK, BLUEPRINT READING, SITE PLANS, SITE WORK, TOOLS USE, ETC.) AND OSHA 10 HOUR CERTIFICATION, TO PREPARE THEM FOR A CAREER IN THE HIGHWAY CONSTRUCTION TRADES. GRADUATES ARE WELL-TRAINED AND READY TO BECOME PRODUCTIVE ENTRY-LEVEL CONSTRUCTION WORKERS. CONTACT THE DISTRICT 8 EEO OFFICE AT 618-346-3360 AND/OR THE HCCTP COORDINATOR AT 618-874-6528 TO LEARN MORE ABOUT THE PROGRAM AND FOR ASSISTANCE IN MEETING WORKFORCE AND TRAINEE GOALS.

3. ALL PATCHING ON THIS PROJECT SHALL BE COMPLETED PRIOR TO HMA SURFACE REMOVAL.

4. THE PROPOSED PAVEMENT MARKING SHALL MATCH THE LOCATIONS OF THE EXISTING PAVEMENT MARKING, AS DIRECTED BY THE ENGINEER.

5. STRUCTURES IN THE PROJECT LIMIT CAN BE CROSSED WITH AN EMPTY MTD WITH 40 TONES MAXIMUM GROSS WEIGHT RESTRICTIONS.

6. NO SURVEY WAS PERFORMED FOR THIS PROJECT AND THE PLANS WERE CREATED USING MICROFILM AND FIELD MEASUREMENTS.

7. ALL MILLED AREAS SHALL BE RESURFACED PRIOR TO OPENING THE LANE TO TRAFFIC.

8. THE FOLLOWING MIXTURE REQUIREMENTS ARE APPLICABLE FOR THIS PROJECT:

DESCRIPTION:	RESURFACING-STANDARD OVERLAY ALONG I-055/064/US 040 FROM 0.9 MI E OF MISSISSIPPI RIVER TO I-64 (TRI-LEVEL) INTCHG IN EAST ST LOUIS
MIXTURE USE	POLY SURFACE
AC/PG	SBS PG 76-22
DESIGN AIR VOIDS	4.0% @ Ndes=80
MIX COMPOSITION (Gradation)	SMA 12.5
FRICTION AGG	MIXTURE "E"
QUALITY MGMT PROGRAM	PFP
MatTranDev Required?	YES

PLAN QUANTITIES FOR HMA ITEMS ARE CALCULATED USING A UNIT WEIGHT OF 112 LB/SQ YD/IN

**COMMITMENTS**

ALL LANES OF I-55/64, US 40 ROUTE 070 SHALL BE OPEN TO TRAFFIC DURING THE 2024 SOLAR ECLIPSE FROM 7:00 A.M. ON SATURDAY APRIL 6TH, 2024, THROUGH 10:00 P.M. ON MONDAY APRIL 8TH, 2024.

REV. - MS

MODEL: Default  
 FILE NAME: p:\w\dst\hw\berkeley.com\FWIDDOT\Documents\DOT\_Offices\District\_8\Projects\0876739\CADD\Draw\CADsheets\0376739-shs-general.dgn

USER NAME = Meseret.sima	DESIGNED -	REVISED -
	DRAWN -	REVISED -
PLOT SCALE = 100.0000' / in.	CHECKED -	REVISED -
PLOT DATE = 10/12/2023	DATE -	REVISED -

**STATE OF ILLINOIS  
DEPARTMENT OF TRANSPORTATION**

**HIGHWAY STANDARDS, GENERAL NOTES, & COMMITMENTS**

SCALE: SHEET 1 OF 1 SHEETS STA. TO STA.

F.A.I. RTE.	SECTION	COUNTY	TOTAL SHEETS	SHEET NO.
070	82-7RS	ST. CLAIR	12	2
ILLINOIS FED. AID PROJECT			CONTRACT NO. 76T39	

				CONSTRUCTION CODE
				100% STATE
CODE NO.	ITEM	UNIT	TOTAL QUANTITY	ROADWAY
				0005
				URBAN
40600290	BITUMINOUS MATERIALS (TACK COAT)	POUND	38798	38798
40600370	LONGITUDINAL JOINT SEALANT	FOOT	41406	41406
40605034	POLYMERIZED HOT-MIX ASPHALT SURFACE COURSE, STONE MATRIX ASPHALT, 12.5, MIX "E", N80	TON	12070	12070
44000159	HOT-MIX ASPHALT SURFACE REMOVAL, 2 1/2"	SQ YD	86217	86217
44213000	PATCHING REINFORCEMENT	SQ YD	309	309
44213200	SAW CUTS	FOOT	2316	2316
44213204	TIE BARS 3/4"	EACH	915	915
67000400	ENGINEER'S FIELD OFFICE, TYPE A	CAL MO	6	6
67100100	MOBILIZATION	L SUM	1	1
70107025	CHANGEABLE MESSAGE SIGN	CAL DA	600	600
70200100	NIGHTTIME WORK ZONE LIGHTING	L SUM	1	1
70300100	SHORT TERM PAVEMENT MARKING	FOOT	7214	7214
70300150	SHORT TERM PAVEMENT MARKING REMOVAL	SQ FT	2405	2405
78300200	RAISED REFLECTIVE PAVEMENT MARKER REMOVAL	EACH	926	926

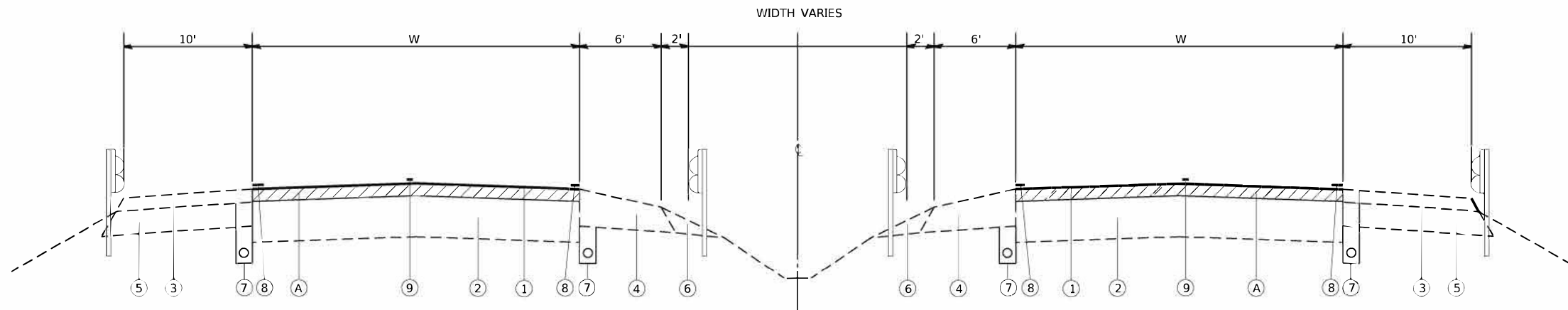
MODEL: Default  
 FILE: \\mifs-pw-backend.com\PW\DOT\Documents\DOT\_Offices\Dir\dr. B\Project\0875739\CAD\Draws\CAD\Sheet\0875739-shs-500.dgn

USER NAME = Meseret.sima	DESIGNED -	REVISED -	<b>STATE OF ILLINOIS DEPARTMENT OF TRANSPORTATION</b>	<b>SUMMARY OF QUANTITIES</b>			F.A.J. RTE.	SECTION	COUNTY	TOTAL SHEETS	SHEET NO.
PLOT SCALE = 100,0000' / in.	DRAWN -	REVISED -					070	82-7RS	ST. CLAIR	12	3
PLOT DATE = 10/12/2023	CHECKED -	REVISED -		SCALE: SHEET 1 OF 3 SHEETS STA. TO STA.			CONTRACT NO. 76T39				
	DATE -	REVISED -					ILLINOIS FED. AID PROJECT				

				CONSTRUCTION CODE	
				100% STATE	
CODE NO.	ITEM	UNIT	TOTAL QUANTITY	ROADWAY	
				0005	
				URBAN	
X0326808	INTERSTATE WEEKEND CLOSURE (SPECIAL)	L SUM	1	1	
X4420575	CLASS A PATCHES, TYPE II, 12 INCH (SPECIAL)	SQ YD	192	192	
X4420577	CLASS A PATCHES, TYPE III, 12 INCH (SPECIAL)	SQ YD	74	74	
X4420573	CLASS A PATCHES, TYPE I, 12 INCH (SPECIAL)	SQ YD	10	10	
X4060107	BITUMINOUS MATERIALS (FOG SEAL)	POUND	326645	326645	
X4420579	CLASS A PATCHES, TYPE IV, 12 INCH (SPECIAL)	SQ YD	33	33	
Z0034105	MATERIAL TRANSFER DEVICE	TON	12070	12070	
* X7800306	PREFORMED PLASTIC PAVEMENT MARKING, TYPE D - INLAID - LINE 6"	FOOT	74318	74318	
∅ Z0076604	TRAINEES TRAINING PROGRAM GRADUATE	HOUR	2000	2000	
* X7800308	PREFORMED PLASTIC PAVEMENT MARKING, TYPE D - INLAID - LINE 8"	FOOT	5816	5816	

\* SPECIALTY ITEM  
∅ 0042

REV. - MS



ROADWAY B WB BRIDGE OMISSION		
STA.	TO	STA.
83+14.73	TO	85+40.39
96+09.13	TO	99+46.96
101+71.14	TO	115+05.66
61+76.90	TO	62+50.10

### EXISTING TYPICAL SECTION ROADWAY B WEST BOUND

STA 79+88.83 TO STA 82+74.73	W=24
STA 85+40.39 TO STA 96+09.13	W=24
STA 99+46.96 TO STA 101+31.14	W=24
*STA 10+17.42 TO STA 40+63.25 (3 LANES)	W=36
STA 40+63.25 TO STA 42+32.59 (5 LANES)	W=60
STA 42+32.59 TO STA 51+73.59 (6 LANES)	W=72
STA 51+73.59 TO STA 55+00 (5 LANES)	W=60
STA 55+00 TO STA 61+36.90 (3 LANES)	W=36
STA 62+90.10 TO STA 72+10 (3 LANES)	W=36

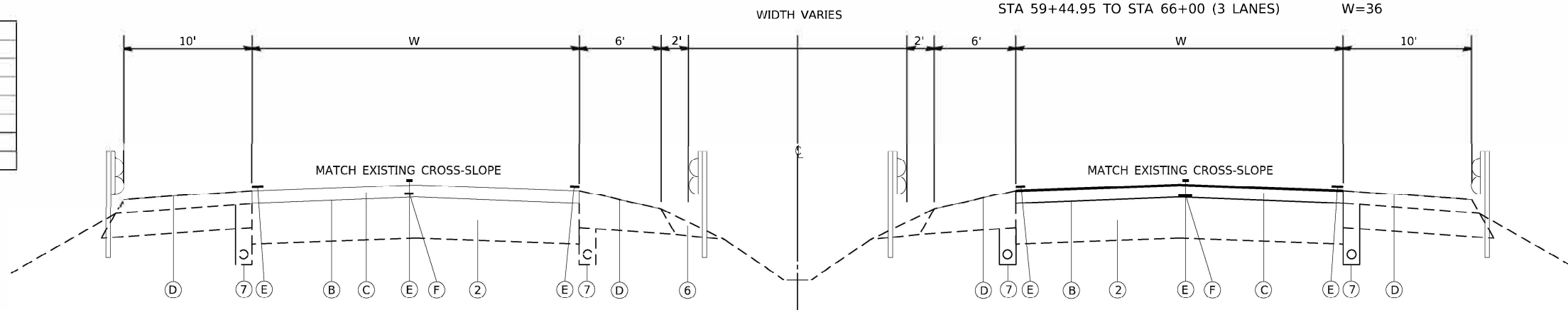
### EXISTING TYPICAL SECTION ROADWAY C EAST BOUND

STA 80+77.83 TO STA 82+89.34	W=24
STA 86+08.06 TO STA 98+15.39	W=24
STA 101+81.33 TO STA 103+49.35 (4 LANES)	W=48
STA 10+89.3 TO STA 16+23.36 (3 LANES)	W=36
STA 19+51.57 TO STA 21+80.48 (3 LANES)	W=36
STA 23+49.91 TO STA 31+92.25 (3 LANES)	W=36
STA 33+67.59 TO STA 46+18.95 (3 LANES)	W=36
STA 46+18.95 TO STA 51+00.00 (4 LANES)	W=48
STA 51+00 TO STA 59+44.95 (5 LANES)	W=60
STA 59+44.95 TO STA 66+00 (3 LANES)	W=36

### STATION EQUATION

\* STA 10+02.29 AH = 115+30.53 BK

ROADWAY C EB BRIDGE OMISSION		
STA.	TO	STA.
83+29.34	TO	86+08.06
98+15.39	TO	101+81.33
103+89.35	TO	10+49.30
16+63.36	TO	19+11.57
22+20.48	TO	23+09.91
32+32.25	TO	33+27.59



### PROPOSED TYPICAL SECTION ROADWAY B WEST BOUND

SEE THE ABOVE EXISTING FOR STATIONING

### PROPOSED TYPICAL SECTION ROADWAY C EAST BOUND

SEE THE ABOVE EXISTING FOR STATIONING

### LEGEND

- ① EXISTING POLYMERIZED HOT-MIX ASPHALT SURFACE COURSE, STONE MATRIX ASPHALT, N80-2-1/2"
- ② EXISTING CONCRETE REINFORCED PCC PAVEMENT
- ③ EXISTING BITUMINOUS SHOULDERS 3 1/4"
- ④ EXISTING BITUMINOUS SHOULDERS 8"
- ⑤ EXISTING BITUMINOUS SHOULDERS (VARIABLE DEPTH)
- ⑥ EXISTING AGGREGATE SHOULDER, TYPE B
- ⑦ EXISTING SUB-SURFACE DRAINS
- ⑧ EXISTING PREFORMED PLASTIC PAVEMENT MARKING

- (A) PROPOSED HOT MIX ASPHALT SURFACE REMOVAL - 2-1/2"
- (B) PROPOSED BITUMINOUS MATERIALS (TACK COAT)
- (C) PROPOSED POLYMERIZED HOT-MIX ASPHALT SURFACE COURSE, STONE MATRIX ASPHALT, 12.5, MIX "E", N80 2-1/2"
- (D) PROPOSED BITUMINOUS MATERIALS (FOG SEAL)
- (E) PROPOSED PREFORMED PLASTIC PAVEMENT MARKING, TYPE D - INLAID
- (F) PROPOSED LONGITUDINAL JOINT SEALANT

MODEL: Default  
 FILE NAME: p:\w\get-hw\barthele.com\FWIDDOT\Documents\DOT\_Offices\District\_8\Projects\0876739\CADD\Drawn\CAD\sheet10376739-shs-by-csa.dgn

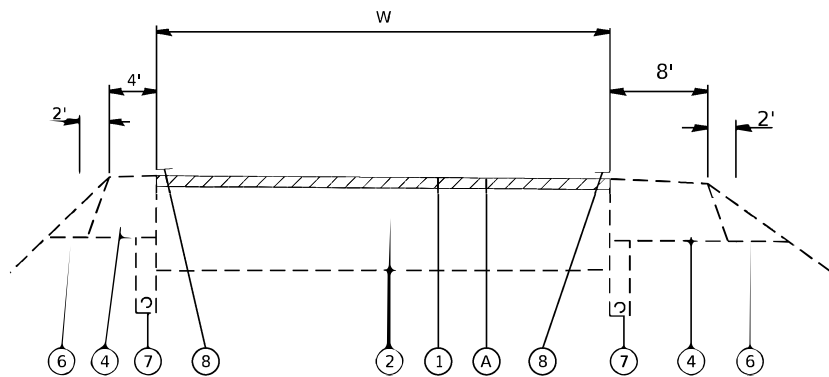
USER NAME = meseret.sima	DESIGNED -	REVISED -
	DRAWN -	REVISED -
PLOT SCALE = 100.0000' / in.	CHECKED -	REVISED -
PLOT DATE = 9/1/2023	DATE -	REVISED -

STATE OF ILLINOIS  
DEPARTMENT OF TRANSPORTATION

TYPICAL SECTIONS

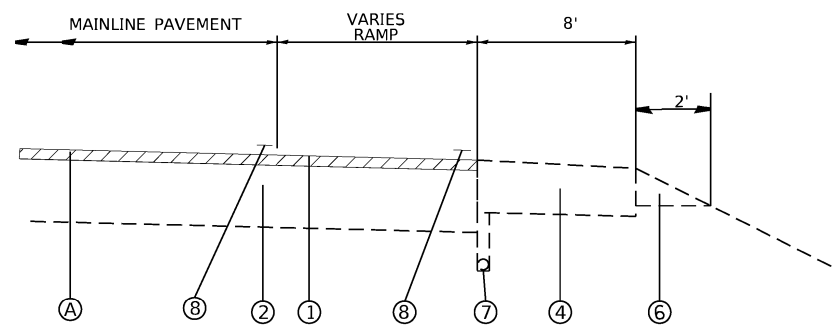
SCALE: SHEET 1 OF 2 SHEETS STA. TO STA.

F.A.I. RTE.	SECTION	COUNTY	TOTAL SHEETS	SHEET NO.
070	82-7RS	ST. CLAIR	13	6
CONTRACT NO. 76T39			ILLINOIS FED. AID PROJECT	



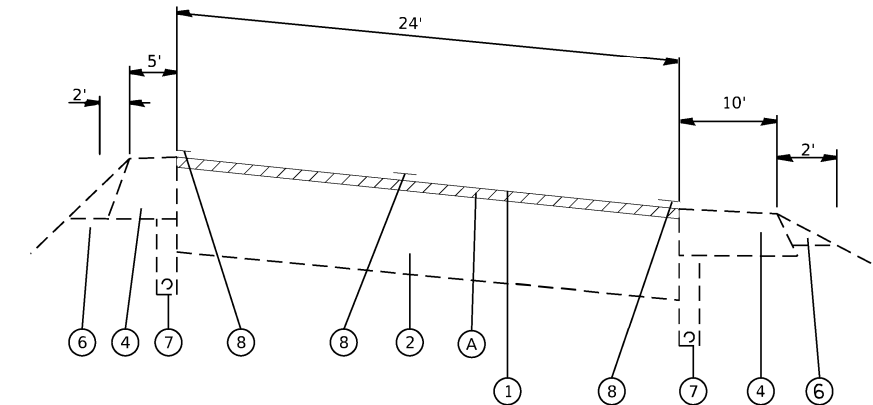
**EXISTING RAMPS TYPICAL SECTION**

RAMP 2	W=16
RAMP A	W=16
RAMP G	W=16
WB MLK APPROACH	W=16



**TYPICAL SECTION RAMP TAPERS**

ROADWAY C EAST BOUND STA 101+81.33 TO STA 103+89.35 STA 40+57.69 TO STA 46+18.95 STA 88+19.92 TO 92+17.07	ROADWAY B WEST BOUND STA 30+00 TO 26+76.33 STA 40+57.69 TO STA 46+18.95 STA 40+63.25 TO STA 38+78.37 STA 92+60 TO STA 91+10.65
I-64 EAST BOUND STA 47+45.81 TO STA 50+09.79	

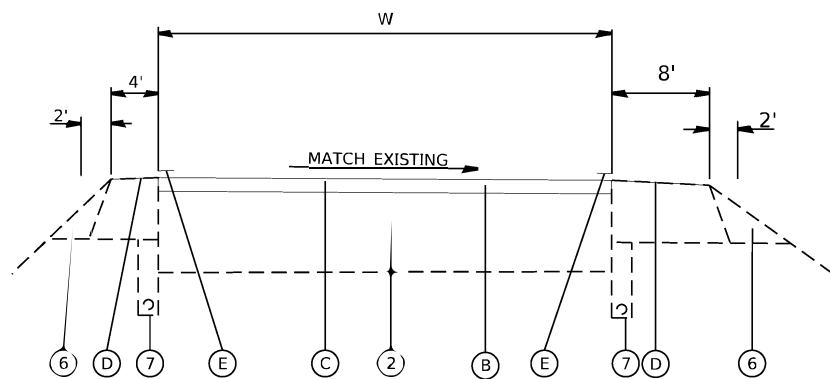


**I-64 EAST/WEST BOUND**

STA. 37+48.53 TO STA. 31+00.00 (WB)  
STA. 39+53.37 TO STA. 50+09.79 (EB)

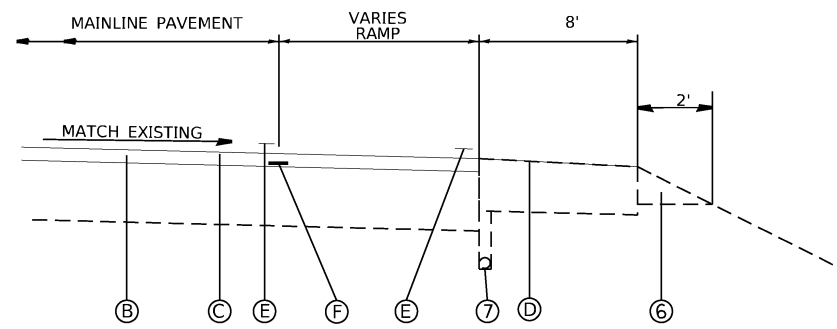
**STATION EQUATION**

\* STA 10+02.29 AH = 115+30.53 BK



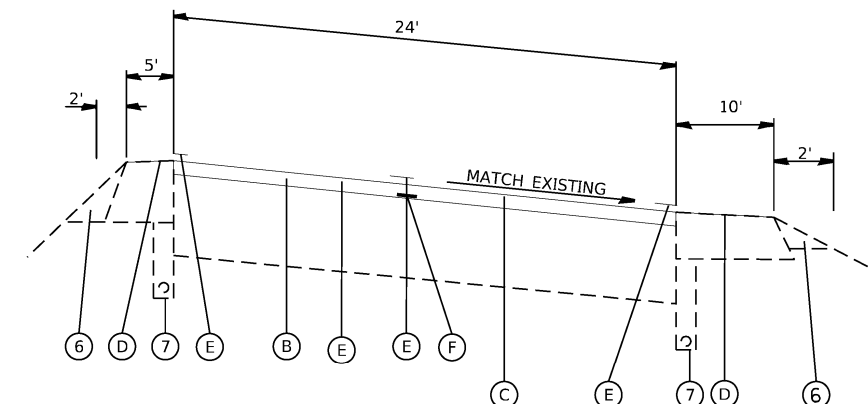
**PROPOSED RAMPS TYPICAL SECTION**

RAMP 2	W=16
RAMP A	W=16
RAMP G	W=16
WB MLK APPROACH	W=16



**PROPOSED TYPICAL SECTION RAMP TAPERS**

ROADWAY C EAST BOUND STA 101+81.33 TO STA 103+89.35 STA 40+57.69 TO STA 46+18.95 STA 88+19.92 TO 92+17.07	ROADWAY B WEST BOUND STA 30+00 TO 26+76.33 STA 40+57.69 TO STA 46+18.95 STA 40+63.25 TO STA 38+78.37 STA 92+60 TO STA 91+10.65
I-64 EAST BOUND STA 47+45.81 TO STA 50+09.79	



**PROPOSED I-64 EAST/WEST BOUND**

STA. 37+48.53 TO STA. 31+00.00 (WB)  
STA. 39+53.37 TO STA. 50+09.79 (EB)

**LEGEND**

- ① EXISTING POLYMERIZED HOT-MIX ASPHALT SURFACE COURSE, STONE MATRIX ASPHALT, N80-2-1/2"
- ② EXISTING CONCRETE REINFORCED PCC PAVEMENT
- ③ EXISTING BITUMINOUS SHOULDERS 3 1/4"
- ④ EXISTING BITUMINOUS SHOULDERS 8"
- ⑤ EXISTING BITUMINOUS SHOULDERS (VARIABLE DEPTH)
- ⑥ EXISTING AGGREGATE SHOULDER, TYPE B
- ⑦ EXISTING SUB-SURFACE DRAINS
- ⑧ EXISTING PREFORMED PLASTIC PAVEMENT MARKING

- Ⓐ PROPOSED HOT MIX ASPHALT SURFACE REMOVAL -
- Ⓑ 2-1/2" PROPOSED BITUMINOUS MATERIALS (TACK COAT)
- Ⓒ PROPOSED POLYMERIZED HOT-MIX ASPHALT SURFACE COURSE, STONE MATRIX ASPHALT, 12.5, MIX "E", N80 2-1/2"
- Ⓓ PROPOSED BITUMINOUS MATERIALS (FOG SEAL)
- Ⓔ PROPOSED PREFORMED PLASTIC PAVEMENT MARKING, TYPE D - INLAID
- Ⓕ PROPOSED LONGITUDINAL JOINT SEALANT

MODEL: Default  
FILE: M:\MSR\p\ulidat-cw\_bentley.com\PROJECTS\DOT\_Offices\District\_8\Projects\0875739\CADD\DATA\CADD\Sheet\0875739-ah-typical.dgn

USER NAME = meseret.sima	DESIGNED -	REVISED -
	DRAWN -	REVISED -
PLOT SCALE = 100.0000' / in.	CHECKED -	REVISED -
PLOT DATE = 9/1/2023	DATE -	REVISED -

**STATE OF ILLINOIS  
DEPARTMENT OF TRANSPORTATION**

SCALE:	SHEET 2	OF 2	SHEETS	STA.	TO STA.
--------	---------	------	--------	------	---------

F.A.I. RTE.	SECTION	COUNTY	TOTAL SHEETS	SHEET NO.
070	82-7RS	ST. CLAIR	13	7
CONTRACT NO. 76T39				
ILLINOIS FED. AID PROJECT				

CLASS A PAVEMENT PATCHING SPECIAL 12 INCH SCHEDULE											
STATION	WB / EB	CLASS A PATCH				PATCHING REINF. (SQ YD)	TIE BARS 3/4" (EACH)	SAW CUTS (FT)	NOTES		
		LENGTH (FT)	WIDTH (FT)	TYPE I SQ YD	TYPE II SQ YD					TYPE III SQ YD	TYPE IV SQ YD
94+55	EB	12	12			16.00		16.00	24.00	72.00	LANE 1
94+55	EB	12	12			16.00		16.00	24.00	72.00	LANE 2
10+57	EB	6	12		8.00			8.00	24.00	60.00	LANE 2
10+68	EB	4	12		5.33			5.33	24.00	56.00	LANE 1
10+68	EB	4	12		5.33			5.33	24.00	56.00	LANE 2
10+68	EB	4	12		5.33			5.33	24.00	56.00	LANE 3
10+88	EB	4	12		5.33			5.33	24.00	56.00	LANE 1
10+88	EB	4	12		5.33			5.33	24.00	56.00	LANE 2
10+88	EB	4	12		5.33			5.33	24.00	56.00	LANE 3
11+61	EB	4	12		5.33			5.33	24.00	56.00	LANE 1
11+61	EB	4	12		5.33			5.33	24.00	56.00	LANE 2
11+61	EB	4	12		5.33			5.33	24.00	56.00	LANE 3
12+64	EB	12	6		8.00			8.00	12.00	48.00	LANE 1
15+47	EB	5	12		6.67			6.67	24.00	58.00	LANE 2
16+34	EB	4	12		5.33			5.33	24.00	56.00	LANE 2
19+40	EB	12	12.0			16.00		16.00	24.00	72.00	LANE 2
23+63	EB	8	12.0		10.67			10.67	24.00	64.00	LANE 2
39+30	EB	7	12.0		9.33			9.33	24.00	62.00	LANE 2
43+00	EB	5	12.0		6.67			6.67	24.00	58.00	LANE 1
43+00	EB	5	12.0		6.67			6.67	24.00	58.00	LANE 2
61+44	EB	5	12.0		6.67			6.67	24.00	58.00	LANE 2
70+56	EB	25	6.0			16.67		16.67	12.00	74.00	LANE 2 , OUTSIDE RESURFACING LIMITS, NEAR ACCIDENT RECONSTRUCTION SITE
103+75	EB	4	13.0		5.78			5.78	26.00	60.00	LANE 3 ROADWAY C / RAMP T
103+75	EB	4	13.0		5.78			5.78	26.00	60.00	LANE 4 ROADWAY C / RAMP T
101+55	WB	4	13.0		5.78			5.78	26.00	60.00	LANE 1 ROADWAY B
101+55	WB	4	13.0		5.78			5.78	26.00	60.00	LANE 2 ROADWAY B
93+83	WB	7	13.0		10.11			10.11	26.00	66.00	LANE 2 ROADWAY B
88+91	WB	5	13.0		7.22			7.22	26.00	62.00	LANE 2 ROADWAY B
79+81	WB	8	32.0				28.44	28.44	64.00	144.00	LANE 2, INCLUDE 2' WIDTH OF SHOULDER, ROADWAY B
19+23	WB	4	12.0		5.33			5.33	24.00	56.00	LANE 2
18+57	WB	7	6.0	4.67				4.67	12.00	38.00	LANE 3
17+01	WB	6	6.0	4.00				4.00	12.00	36.00	LANE 3
13+71	WB	4	12.0		5.33			5.33	24.00	56.00	LANE 2
SUBTOTAL:				8.67	167.11	64.67	28.44	268.89	796.00	2014.00	
ANTICIPATED FAILURES (15%):				1.30	25.07	9.70	4.27	40.33	119.40	302.10	
TOTAL:				10	192	74	33	309	915	2316	

MODEL: Default  
 FILE: M:\GIS\Projects\GIS\Projects\DOT\_Offices\District\_8\Projects\DOT\Documents\DOT\_087539\CADD\DOT\CADD\DOT\_087539-011-schedule.dgn

USER NAME = meseret.sima	DESIGNED -	REVISED -	<b>STATE OF ILLINOIS DEPARTMENT OF TRANSPORTATION</b>	<b>SCHEDULE OF QUANTITIES</b>			F.A.P. RTE.	SECTION	COUNTY	TOTAL SHEETS	SHEET NO.
PLOT SCALE = 100.0000' / in.	DRAWN -	REVISED -					070	82-7RS	ST. CLAIR	13	8
PLOT DATE = 9/1/2023	CHECKED -	REVISED -		SCALE: SHEET 1 OF 3 SHEETS STA. TO STA.			CONTRACT NO. 76T39				
	DATE -	REVISED -		ILLINOIS FED. AID PROJECT							

LOCATION			PERFORMED PLASTIC PAVEMENT MARKING, TYPE D - INLAID - LINE										SHORT TERM PAVEMENT MARKING	SHORT TERM PAVEMENT MARKING REMOVAL	RAISED REFLECTIVE PAVEMENT MARKERS REMOVAL EACH
			LENGTH	6"					8"						
				SOLID WHITE	SOLID YELLOW	SPECIAL SKIP-DASH WHITE	EDGE LINE WHITE	EDGE LINE YELLOW	SKIP DASH WHITE	SOLID YELLOW	SOLID WHITE				
STA.	TO	STA.	FOOT	FOOT	FOOT	FOOT	FOOT	FOOT	FOOT	FOOT	FOOT	FOOT	SQ. FT.		
<b>ROADWAY C-EAST BOUND</b>															
80+37.83	TO	83+29.34	292	292	292	73	12	12	30				65	22	7
83+29.34	TO	86+08.06							BRIDGE OMISSION						
86+08.06	TO	98+15.39	1207	1207	1207	302	49	49	121				267	89	30
98+15.39	TO	101+81.33							BRIDGE OMISSION						
101+81.33	TO	103+89.39	208	208	208	104	9	9	42		416		91	30	10
103+89.39	TO	10+49.30							BRIDGE OMISSION						
10+49.30	TO	16+63.36	614	614	614	307	25	25	123				155	52	31
16+63.36	TO	19+11.57							BRIDGE OMISSION						
19+11.57	TO	22+20.48	309	309	309	154	13	13	62				78	26	15
22+20.48	TO	23+09.91							BRIDGE OMISSION						
23+09.91	TO	32+32.25	922	922	922	461	37	37	185				233	78	46
32+32.25	TO	33+27.59							BRIDGE OMISSION						
33+27.59	TO	46+18.95	1291	646	1291	646	52	52	239		670		329	110	82
46+18.95	TO	51+00.00	481	481	481	361	20	20	145		200		155	52	24
51+00.00	TO	59+44.95	845	845	845	845	34	34	339				267	89	84
59+44.95	TO	66+00.00	655	655	655	328	8746	8746	437	350	350		1842	614	16
<b>ROADWAYB-WESTBOUND</b>															
72+10.00	TO	66+00.00	610	610	610	552	25	25	134		350		214	71	40
66+00.00	TO	62+50.10	350	350	350	1558	96	96	430		900		348	116	83
62+50.10	TO	61+76.90							BRIDGE OMISSION						
61+76.90	TO	55+00.00	677	677	677	169	27	27	102		677		214	71	34
55+00.00	TO	51+73.59	326	326	326	245	13	13	98		326		123	41	32
51+73.59	TO	40+63.25	1110	1110	1110	1110	44	44	444				351	117	111
40+63.25	TO	09+77.42	3086	3086	3086	1543	123	124	617		205		799	266	77
115+05.66	TO	101+71.14							BRIDGE OMISSION						
101+71.14	TO	99+46.96	224	224	224	56	9	9	23				50	17	6
99+46.96	TO	96+09.13							BRIDGE OMISSION						
96+09.13	TO	85+40.39	1069	1069	1069	267	43	43	321				256	85	53
85+40.39	TO	83+14.73							BRIDGE OMISSION						
83+14.73	TO	79+48.83	366	366	366	366	15	15	37				106	35	9
<b>EASTBOUND I-64</b>															
39+53.37	TO	50+09.79	1056	1056	1056	264	42	42	106				233	78	29
<b>WESTBOUND I-64</b>															
37+68.35	TO	31+00.00	668	668	668	167	27	27			500		187	62	13
<b>EB MLK A<sup>2</sup> PROACH</b>															
43+24.88	TO	51+00.00	775	775										0	
<b>RAMP 2</b>															
00+78.71	TO	04+33.05	2720	2720	2720	680	14		35		354		593	198	68
<b>WB MLK APPROACH</b>															
40+63.25	TO	38+78.37	185	185	185	46		8	19		185		57	19	5
<b>RAMP A</b>															
14+61.42	TO	40+63.25		188	188	47		8	19		185		58	19	
<b>RAMP I</b>															
12+37.73	TO	10+13.01	225	225	9		9						22	7	6
<b>RAMP G</b>															
			530	530	530	133					148		122	41	13
<b>SUB TOTAL</b>				20345	20000	10783	9484	9478	4228	350	5466		7214	2405	926
<b>TOTAL</b>				<b>74318</b>						<b>5816</b>		<b>7214</b>	<b>2405</b>	<b>926</b>	

MODEL: D:\m\l\...  
 FILE NAME: ...  
 PROJECT: ...  
 DATE: 10/12/2023

USER NAME = Meseret.sima	DESIGNED -	REVISED -
PLOT SCALE = 100,0000' / in.	CHECKED -	REVISED -
PLOT DATE = 10/12/2023	DATE -	REVISED -

DESIGNED -	REVISED -
DRAWN -	REVISED -
CHECKED -	REVISED -
DATE -	REVISED -

**STATE OF ILLINOIS  
DEPARTMENT OF TRANSPORTATION**

**SCHEDULE OF QUANTITIES**

SCALE: SHEET 3 OF 3 SHEETS STA. TO STA.

F.A.1 RTE.	SECTION	COUNTY	TOTAL SHEETS	SHEET NO.
070	82-7RS	ST. CLAIR	12	9
ILLINOIS FED. AID PROJECT			CONTRACT NO. 76T39	



LOCATION			PERFORMED PLASTIC PAVEMENT MARKING, TYPE D - INLAID - LINE/TEMPORARY PAVEMENT MARKING PAINT											PAVEMENT MARKING REMOVAL - WATER BLASTING	SHORT TERM PAVEMENT MARKING	SHORT TERM PAVEMENT MARKING REMOVAL	RAISED REFLECTIVE PAVEMENT MARKERS REMOVAL		
			LENGTH	6"						8"		SQ. FT.	FOOT					SQ. FT.	EACH
				SOLID WHITE	SOLID YELLOW	SPECIAL SKIP-DASH WHITE	EDGE LINE WHITE	EDGE LINE YELLOW	SKIP DASH WHITE	SOLID YELLOW	SOLID WHITE								
STA.	TO	STA.	FOOT	FOOT	FOOT	FOOT	FOOT	FOOT	FOOT	FOOT	FOOT	FOOT	SQ. FT.	FOOT	SQ. FT.	EACH			
<b>ROADWAY C-EAST BOUND</b>																			
80+37.83	TO	83+29.34	292	292	292	73	12	12	30				237	65	22	7			
83+29.34	TO	86+08.06								BRIDGE OMISSION									
86+08.06	TO	98+15.39	1207	1207	1207	302	49	49	121				978	267	89	30			
98+15.39	TO	101+81.33								BRIDGE OMISSION									
101+81.33	TO	103+89.39	208	208	208	104	9	9	42		416		471	91	30	10			
103+89.39	TO	10+49.30								BRIDGE OMISSION									
10+49.30	TO	16+63.36	614	614	614	307	25	25	123				569	155	52	31			
16+63.36	TO	19+11.57								BRIDGE OMISSION									
19+11.57	TO	22+20.48	309	309	309	154	13	13	62				287	78	26	15			
22+20.48	TO	23+09.91								BRIDGE OMISSION									
23+09.91	TO	32+32.25	922	922	922	461	37	37	185				855	233	78	46			
32+32.25	TO	33+27.59								BRIDGE OMISSION									
33+27.59	TO	46+18.95	1291	646	1291	646	52	52	259		670		1429	329	110	82			
46+18.95	TO	51+00.00	481	481	481	361	20	20	145		200		636	155	52	24			
51+00.00	TO	59+44.95	845	845	845	845	34	34	339				981	267	89	84			
59+44.95	TO	66+00.00	655	655	655	328	8746	8746	437	350	350		6989	1842	614	16			
<b>ROADWAYB-WESTBOUND</b>																			
72+10.00	TO	66+00.00	610	610	610	552	25	25	184		350		902	214	71	40			
66+00.00	TO	62+50.10	350	350	350	1558	96	96	480		900		1577	348	116	83			
62+50.10	TO	61+76.90								BRIDGE OMISSION									
61+76.90	TO	55+00.00	677	677	677	169	27	27	102		677		1011	214	71	34			
55+00.00	TO	51+73.59	326	326	326	245	13	13	98		326		558	123	41	32			
51+73.59	TO	40+63.25	1110	1110	1110	1110	44	44	444				1288	351	117	111			
40+63.25	TO	09+77.42	3086	3086	3086	1543	123	124	617		205		2996	799	266	77			
115+05.66	TO	101+71.14								BRIDGE OMISSION									
101+71.14	TO	99+46.96	224	224	224	56	9	9	23				182	50	17	6			
99+46.96	TO	96+09.13								BRIDGE OMISSION									
96+09.13	TO	85+40.39	1069	1069	1069	267	43	43	321				937	256	85	53			
85+40.39	TO	83+14.73								BRIDGE OMISSION									
83+14.73	TO	79+48.83	366	366	366	366	15	15	37				388	106	35	9			
<b>EASTBOUND I-64</b>																			
39+53.37	TO	50+09.79	1056	1056	1056	264	42	42	106				856	233	78	29			
<b>WESTBOUND I-64</b>																			
37+68.35	TO	31+00.00	668	668	668	167	27	27		500			853	187	62	13			
<b>EB MLK APPROACH</b>																			
43+24.88	TO	51+00.00	775	775									258		0				
<b>RAMP 2</b>																			
00+78.71	TO	04+33.05	2720	2720	2720	680	14		35		354		2292	593	198	68			
<b>WB MLK APPROACH</b>																			
40+63.25	TO	38+78.37	185	185	185	46		8	19		185		271	57	19	5			
<b>RAMP A</b>																			
14+61.42	TO	40+63.25		188	188	47		8	19		185		273	58	19				
<b>RAMP I</b>																			
12+37.73	TO	10+13.01	225	225	9		9						81	22	7	6			
<b>RAMP G</b>																			
			530	530	530	133					148		496	122	41	13			
<b>SUB TOTAL</b>				20345	20000	10783	9484	9478	4228	350	5466		28650	7214	2405	926			
<b>TOTAL</b>				<b>74318</b>						<b>5816</b>			<b>28650</b>	<b>7214</b>	<b>2405</b>	<b>926</b>			

MODEL: Default  
 FILE NAME: \\pilot-new-beadley.com\FW\DOT\Documents\DOT\_offices\Dir\dr\_8\Project\0875739\CADD\Basis\CADD\Sheet\0875739-Sub-Quantity.tbl.dgn

USER NAME = meseret,sima	DESIGNED -	REVISED -
	DRAWN -	REVISED -
PLOT SCALE = 100,0000' / in.	CHECKED -	REVISED -
PLOT DATE = 9/5/2023	DATE -	REVISED -

**STATE OF ILLINOIS  
DEPARTMENT OF TRANSPORTATION**

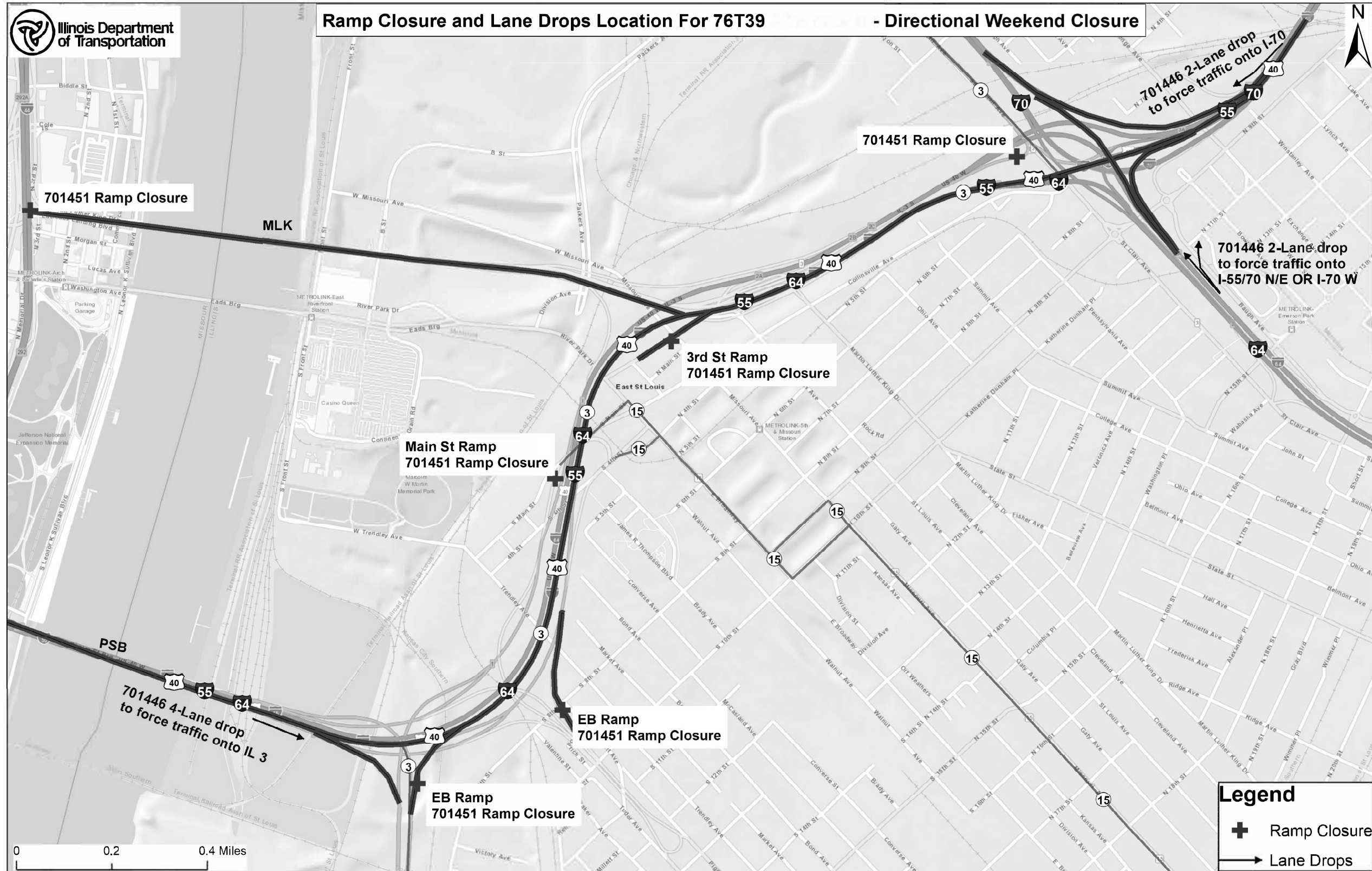
**SCHEDULE OF QUANTITIES**

SCALE: SHEET 3 OF 3 SHEETS STA. TO STA.

F.A.I. RTE.	SECTION	COUNTY	TOTAL SHEETS	SHEET NO.
070	82-7RS	ST. CLAIR	13	10
CONTRACT NO. 76T39			ILLINOIS FED. AID PROJECT	



**Ramp Closure and Lane Drops Location For 76T39 - Directional Weekend Closure**



0 0.2 0.4 Miles

**Legend**

- Ramp Closure
- Lane Drops

MODEL: D:\detail... FILE NAME: ...

USER NAME = meseret.sima	DESIGNED -	REVISED -
	DRAWN -	REVISED -
PLOT SCALE = 100.0000 "/> <td>CHECKED -</td> <td>REVISED -</td>	CHECKED -	REVISED -
PLOT DATE = 9/1/2023	DATE -	REVISED -

**STATE OF ILLINOIS  
DEPARTMENT OF TRANSPORTATION**

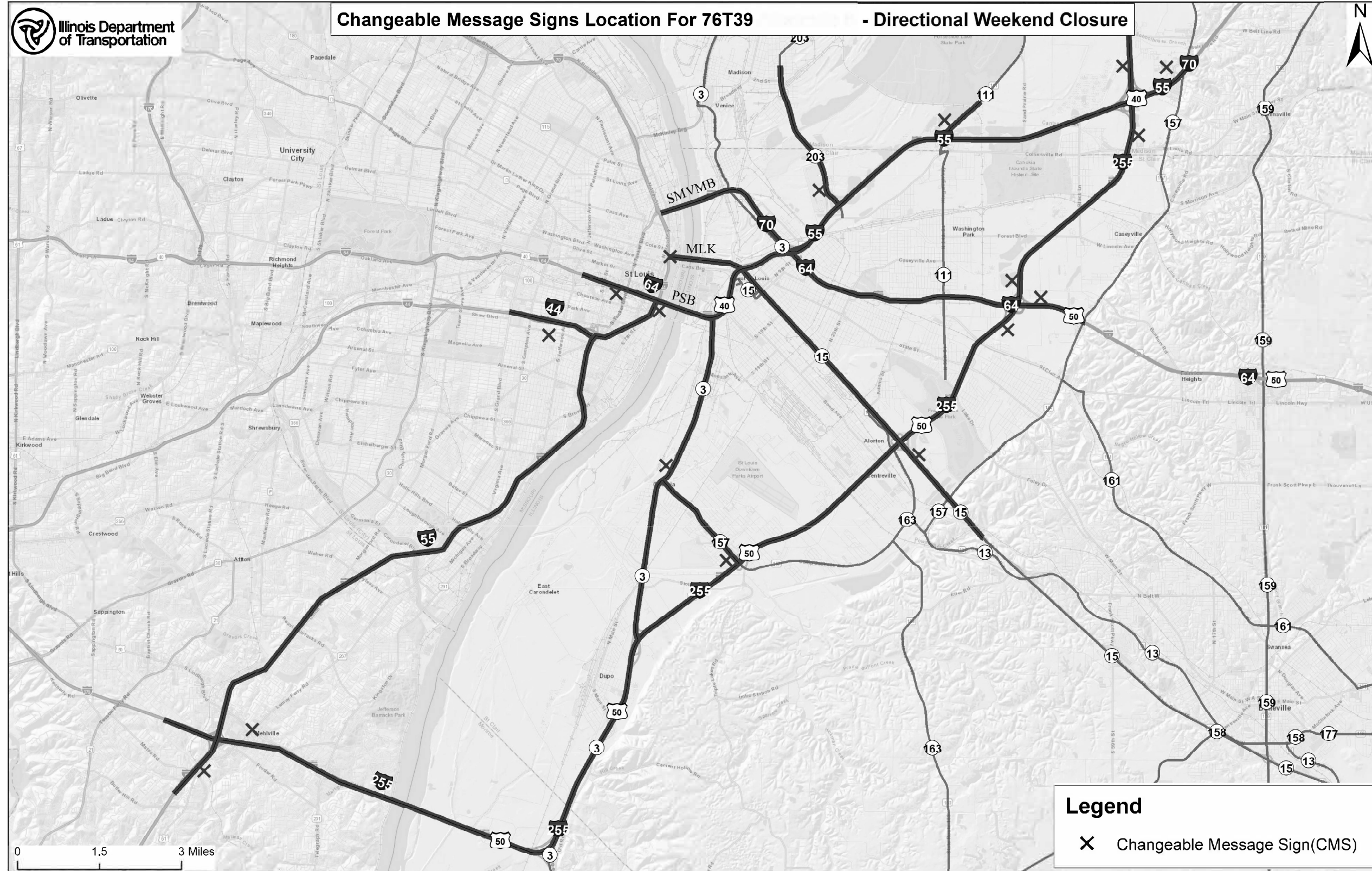
**INTERSTATE WEEKEND CLOSURE DETAIL**

SCALE: SHEET 1 OF 1 SHEETS STA. TO STA.

F.A.I. RTE.	SECTION	COUNTY	TOTAL SHEETS	SHEET NO.
070	82-7RS	ST. CLAIR	12	11
ILLINOIS FED. AID PROJECT			CONTRACT NO. 76T39	



**Changeable Message Signs Location For 76T39 - Directional Weekend Closure**



0 1.5 3 Miles

**Legend**

X Changeable Message Sign(CMS)

MODEL: D:\detroit... FILE NAME: ...

USER NAME = meseret.sima	DESIGNED -	REVISED -
	DRAWN -	REVISED -
PLOT SCALE = 100.0000 "/ in.	CHECKED -	REVISED -
PLOT DATE = 9/1/2023	DATE -	REVISED -

**STATE OF ILLINOIS  
DEPARTMENT OF TRANSPORTATION**

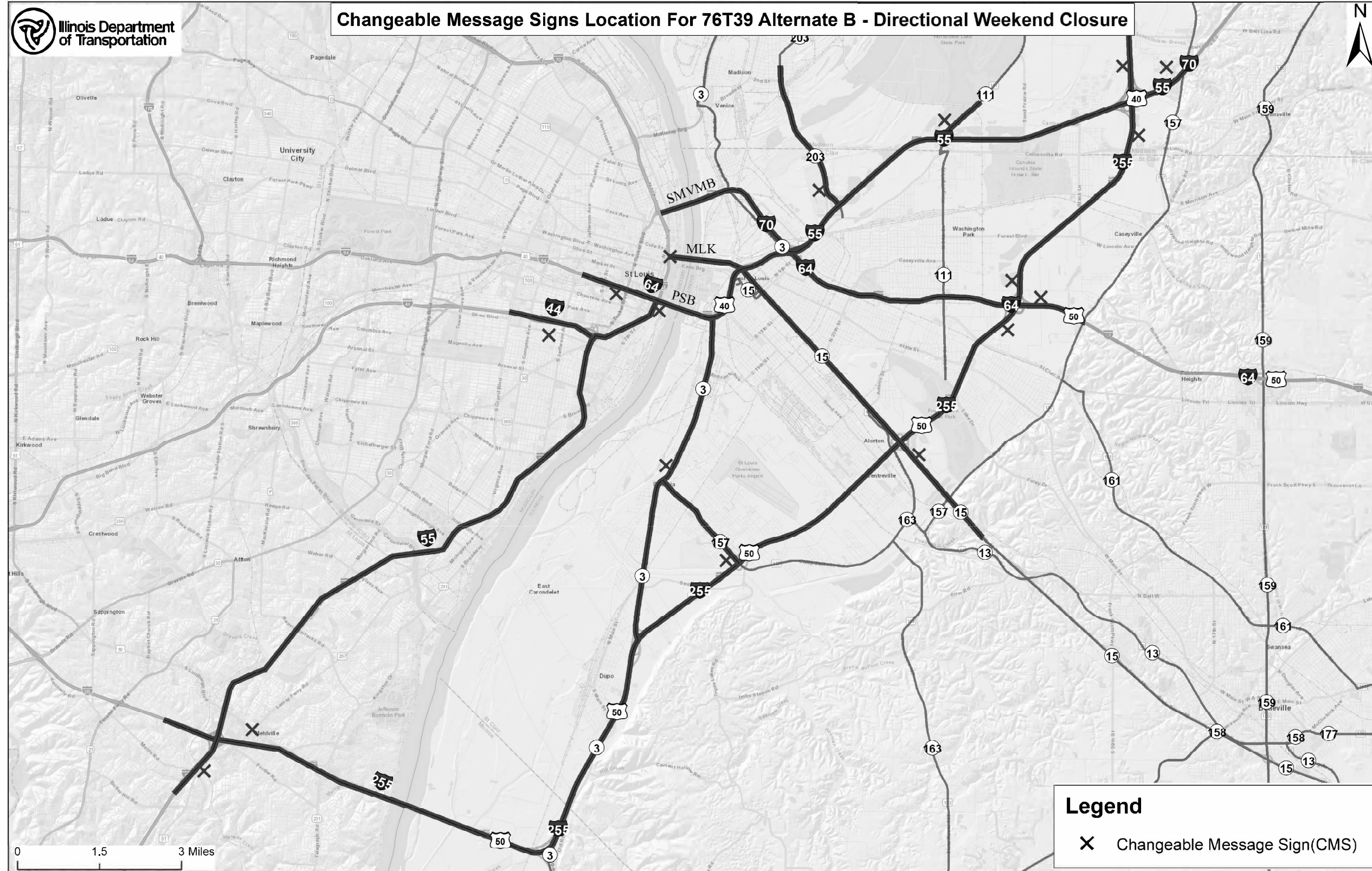
**INTERSTATE WEEKEND CLOSURE DETAIL**

SCALE: SHEET 1 OF 1 SHEETS STA. TO STA.

F.A.I. RTE.	SECTION	COUNTY	TOTAL SHEETS	SHEET NO.
070	82-7RS	ST. CLAIR	12	12
ILLINOIS FED. AID PROJECT			CONTRACT NO. 76T39	



### Changeable Message Signs Location For 76T39 Alternate B - Directional Weekend Closure



0 1.5 3 Miles

**Legend**

X Changeable Message Sign(CMS)

MODEL: D:\detroit... FILE NAME: ...

USER NAME = meseret.sima	DESIGNED -	REVISED -
	DRAWN -	REVISED -
PLOT SCALE = 100.0000 "/> <td>CHECKED -</td> <td>REVISED -</td>	CHECKED -	REVISED -
PLOT DATE = 9/1/2023	DATE -	REVISED -

**STATE OF ILLINOIS  
DEPARTMENT OF TRANSPORTATION**

**INTERSTATE WEEKEND CLOSURE DETAIL**

SCALE: SHEET 1 OF 1 SHEETS STA. TO STA.

F.A.I. RTE.	SECTION	COUNTY	TOTAL SHEETS	SHEET NO.
070	82-7RS	ST. CLAIR	13	13

CONTRACT NO. 76T39

ILLINOIS FED. AID PROJECT