

STATE OF ILLINOIS
DEPARTMENT OF TRANSPORTATION

| F.A. RTE. | SECTION | COUNTY | TOTAL SHEETS | SHEET NO. |
|-----------|-----------------------|----------|--------------------|-----------|
| VAR | D7 EMULSION TANK 2024 | RICHLAND | 6 | 1 |
| | | ILLINOIS | CONTRACT NO. 74C38 | |

D-97-081-23

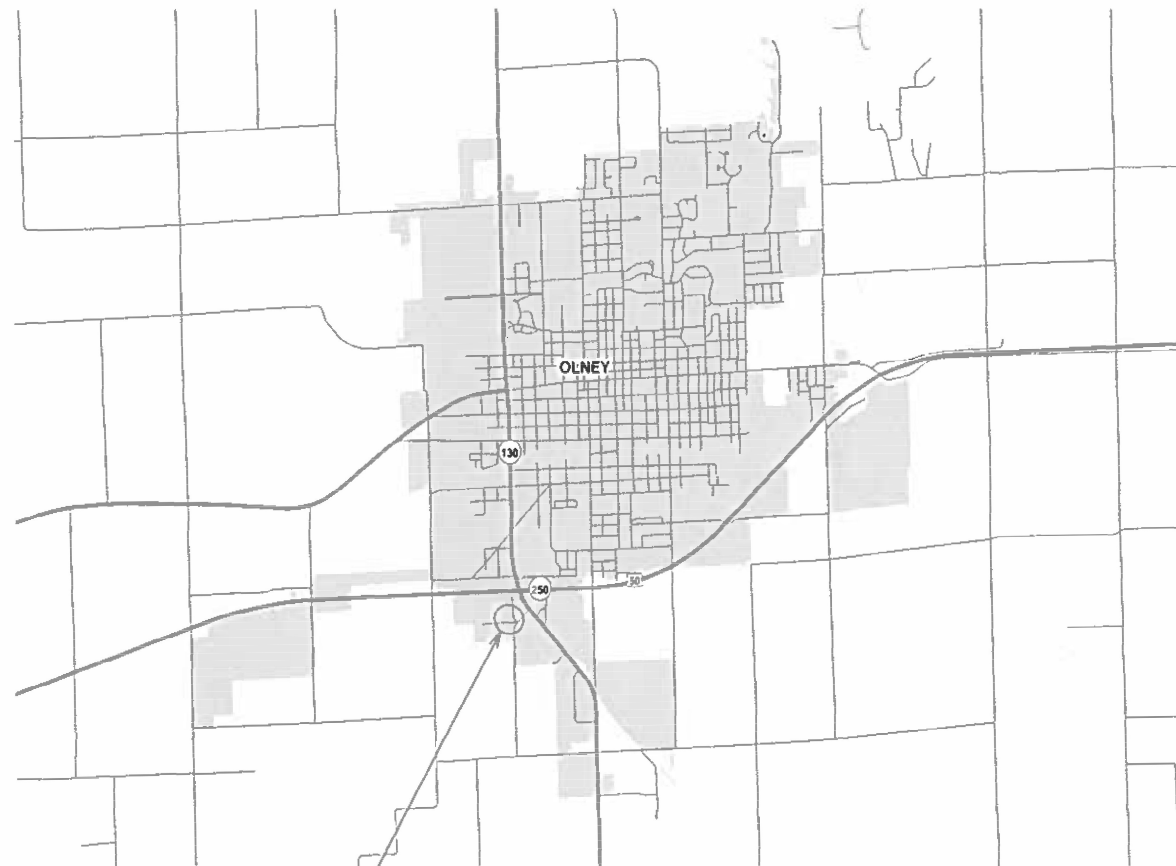
FOR INDEX OF SHEETS, SEE SHEET NO. 2

PROPOSED HIGHWAY PLANS

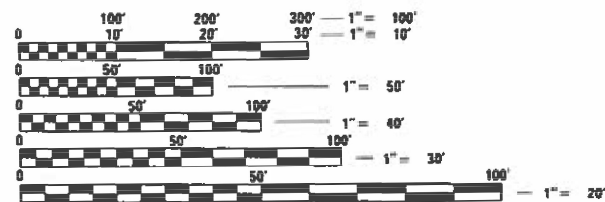
OLNEY MAINTENANCE YARD SECTION D7 EMULSION TANK 2024

EMULSION TANK INSTALLATION RICHLAND COUNTY

C-97-110-23



OLNEY MAINTENANCE YARD
3964 N. GENTRY ROAD



FULL SIZE PLANS HAVE BEEN PREPARED USING STANDARD ENGINEERING SCALES. REDUCED SIZED PLANS WILL NOT CONFORM TO STANDARD SCALES. IN MAKING MEASUREMENTS ON REDUCED PLANS, THE ABOVE SCALES MAY BE USED.

J.U.L.I.E.
JOINT UTILITY LOCATION INFORMATION FOR EXCAVATORS
1-800-892-0123
OR 811

PROJECT ENGINEER DEWAYNE SEACHRIST
PROJECT MANAGER ROBERT GREUEL

CONTRACT NO. 74C38

STATE OF ILLINOIS
DEPARTMENT OF TRANSPORTATION

SUBMITTED JUNE 14 2023
Jeffrey P. Meyer
REGIONAL ENGINEER

August 18, 2023
Scott A. Etkin
ENGINEER OF DESIGN AND ENVIRONMENT

August 18, 2023
Stephen M. Lewis
DIRECTOR OF HIGHWAYS PROJECT IMPLEMENTATION

PRINTED BY THE AUTHORITY
OF THE STATE OF ILLINOIS

INDEX OF SHEETS

SHEET NO. DESCRIPTION

- 1 COVER SHEET
- 2 INDEX OF SHEETS, STANDARDS AND GENERAL NOTES
- 3 SUMMARY OF QUANTITIES
- 4 PLAN SHEET
- 5 DETAIL SHEET
- 6 SCHEMATIC SHEET

STANDARDS

- 000001-08 STANDARD SYMBOLS, ABBREVIATIONS AND PATTERNS
- 001001-02 AREAS OF REINFORCEMENT BARS
- 001006 DECIMAL OF AN INCH AND OF A FOOT
- 701901-08 TRAFFIC CONTROL DEVICES

GENERAL NOTES

THE LOCATION OF THIS PROJECT IS THE OLNEY MAINTENANCE YARD AT 3964 NORTH GENTRY ROAD, OLNEY, ILLINOIS.

CONTRACTOR SHALL COORDINATE LOCATION AND ORIENTATION WITH ILLINOIS DEPARTMENT OF TRANSPORTATION (IDOT). CONTRACTOR SHALL COORDINATE WITH RESIDENT ENGINEER AND OR AN ELECTRICAL CONTRACTOR TO DETERMINE LOCATIONS OF ANY CONDUIT THROUGH CONCRETE. CONTRACTOR SHALL COORDINATE WITH THE TANK MANUFACTURER TO DETERMINE LOCATIONS OF TANK PADS AND ANY SPECIAL REQUIREMENTS FOR SECURING THE TANK TO THE PADS.

THE EXISTING EQUIPMENT, VEHICLES, AND MATERIALS LOCATED NEAR THE WORK SITE IN THE YARD WILL BE MOVED AND REPLACED BY STATE FORCES TO ACCOMMODATE THE WORK.

QUANTITIES SHOWN ON THE PLANS ARE FOR ESTIMATION PURPOSES. IT IS THE RESPONSIBILITY OF THE CONTRACTOR TO VERIFY QUANTITIES.

DRILLED SHAFTS SHALL BE INCIDENTAL TO THE CONCRETE STRUCTURE AND SHALL BE INCLUDED IN THE COST OF THE CONCRETE FOR CONCRETE STRUCTURES.

TRENCH BACKFILL SHALL BE DONE ACCORDING TO ARTICLE 208.1 AND 208.2 OF THE STANDARD SPECIFICATIONS FOR ROADS AND BRIDGE CONSTRUCTION BOOK. THE BASIS OF OF PAYMENT SHALL BE INCLUDED IN THE COST OF THE CONDUIT.

THE THREE INCH SCHEDULE 40 PVC DRAIN WITH A THREE INCH STAINLESS STEEL BALL VALVE AND THE THREE INCH QUICK COUPLER SHALL BE INCLUDED IN THE COST OF THE CONCRETE IN THE CONCRETE STRUCTURE.

Rev. SK

MODEL: Default
 FILE NAME: p:\w\idot\pw\berkeley.com\FWIDOT\Documents\DOT_Offices\District_7\Projects\74C38\CADD\18\CAD\Drawings\0774C38-01-0000.dgn

| | | | | | | | | | | |
|------------------------------|------------|-----------|---|--|--------------------|-----------------------|-----------------------------|--------------|-----------|--|
| USER NAME = jessica.hille | DESIGNED - | REVISED - | STATE OF ILLINOIS DEPARTMENT OF TRANSPORTATION | INDEX OF SHEETS AND GENERAL NOTES | F.A. RTE. | SECTION | COUNTY | TOTAL SHEETS | SHEET NO. | |
| PLOT SCALE = 100.0000' / in. | DRAWN - | REVISED - | | | VAR | D7 EMULSION TANK 2024 | RICHLAND | 6 | 2 | |
| PLOT DATE = 7/5/2023 | CHECKED - | REVISED + | | | CONTRACT NO. 74C38 | | ILLINOIS FED. AID PROJECT | | | |
| | DATE - | REVISED + | | | SCALE: | SHEET OF SHEETS | STA. | TO STA. | | |

| SUMMARY OF QUANTITIES | | | TOTAL QUANTITIES | CONSTRUCTION TYPE CODE | | |
|-----------------------|--|-------|------------------|------------------------|--|--|
| CODE NO | ITEM | UNIT | | 0044 100% STATE URBAN | | |
| 50300225 | CONCRETE STRUCTURES | CU YD | 15.1 | 15.1 | | |
| 50800205 | REINFORCEMENT BARS, EPOXY COATED | POUND | 2130 | 2130 | | |
| 67100100 | MOBILIZATION | L SUM | 1 | 1 | | |
| * 81028320 | UNDERGROUND CONDUIT, PVC, 1" DIA. | FOOT | 150 | 150 | | |
| * 81028330 | UNDERGROUND CONDUIT, PVC, 1 1/4" DIA. | FOOT | 150 | 150 | | |
| * 81100300 | CONDUIT ATTACHED TO STRUCTURE, 1" DIA., GALVANIZED STEEL | FOOT | 10 | 10 | | |
| * 81100400 | CONDUIT ATTACHED TO STRUCTURE, 1 1/4" DIA., GALVANIZED STEEL | FOOT | 10 | 10 | | |
| * 81702381 | ELECTRIC CABLE IN CONDUIT, 600V (XLP-TYPE USE) 2-1/C NO. 1, 1/C NO. 6 GROUND | FOOT | 166 | 166 | | |
| * 81702418 | ELECTRIC CABLE IN CONDUIT, 600V (XLP-TYPE USE) 3-1/C NO. 6, 1/C NO. 8 GROUND | FT | 166 | 166 | | |
| * X1200131 | EMULSION TANK | L SUM | 1 | 1 | | |
| * X1400517 | SAFETY SWITCH, 60AMP, NEMA 3R, 2-POLE FUSED | EACH | 1 | 1 | | |
| * X1400518 | SAFETY SWITCH, 100AMP, NEMA 3R, 2-POLE FUSED | EACH | 1 | 1 | | |

| SUMMARY OF QUANTITIES | | | TOTAL QUANTITIES | CONSTRUCTION TYPE CODE | | |
|-----------------------|--------------------------------|------|------------------|------------------------|--|--|
| CODE NO | ITEM | UNIT | | 0044 100% STATE URBAN | | |
| * X8010260 | 60 AMP CIRCUIT BREAKER, 2 POLE | EACH | 1 | 1 | | |
| * XP000136 | 100A CIRCUIT BREAKER, 2P | EACH | 1 | 1 | | |

* SPECIALTY ITEM

REV. - MS

MODEL: Default
 FILE NAME: \\p11000-rw-bentley.com-p11000\Documents\DOT Offices\District 3\Projects\74C38\CADDData\CAD\Sheet\74C38-sh-500.dgn

| | | |
|------------------------------|------------|-----------|
| USER NAME = jessica-hille | DESIGNED - | REVISED - |
| PLOT SCALE = 100.0000' / in. | DRAWN - | REVISED - |
| PLOT DATE = 7/5/2023 | CHECKED - | REVISED - |
| | DATE - | REVISED - |

**STATE OF ILLINOIS
DEPARTMENT OF TRANSPORTATION**

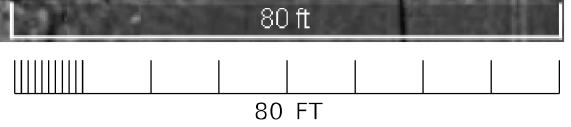
SUMMARY OF QUANTITIES

SCALE: SHEET OF SHEETS STA. TO STA.

| | | | | |
|---------------------------|-----------------------|----------|--------------------|-----------|
| F.A. RTE. | SECTION | COUNTY | TOTAL SHEETS | SHEET NO. |
| VAR | D7 EMULSION TANK 2024 | RICHLAND | 6 | 3 |
| | | | CONTRACT NO. 74C38 | |
| ILLINOIS FED. AID PROJECT | | | | |



Google Earth



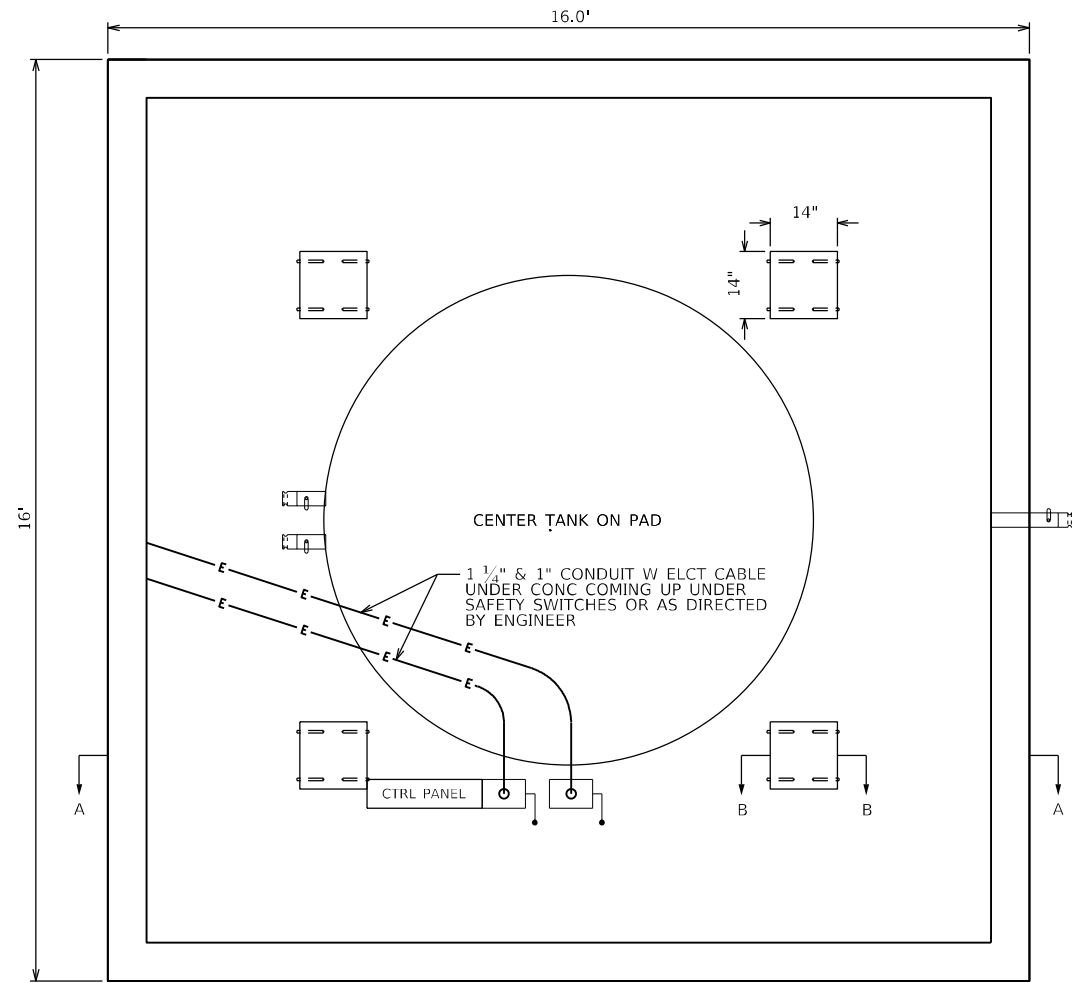
MODEL: Default
 FILE: \\mifs-pw-beadley.com\P\INDOT\Documents\INDOT Office\District 7\Projects\74C38\CADDData\CAD\Sheets\74C38-eh-draw38.dgn

| | | |
|------------------------------|------------|-----------|
| USER NAME = jessica.hille | DESIGNED - | REVISED - |
| | DRAWN - | REVISED - |
| PLOT SCALE = 100,0000' / in. | CHECKED - | REVISED - |
| PLOT DATE = 7/5/2023 | DATE - | REVISED - |

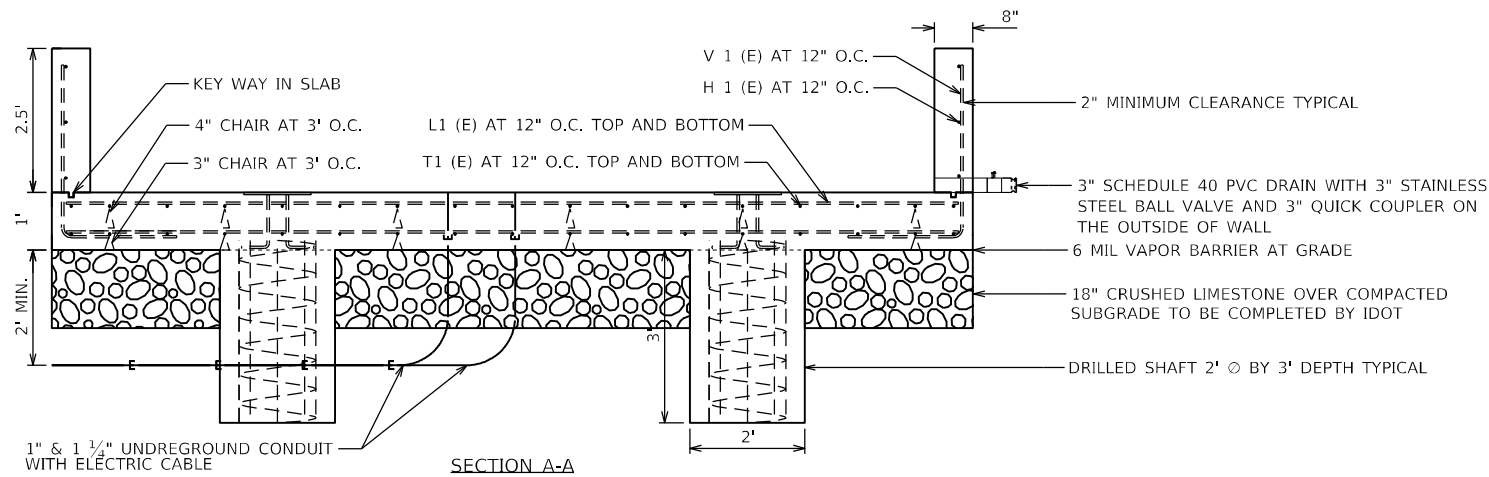
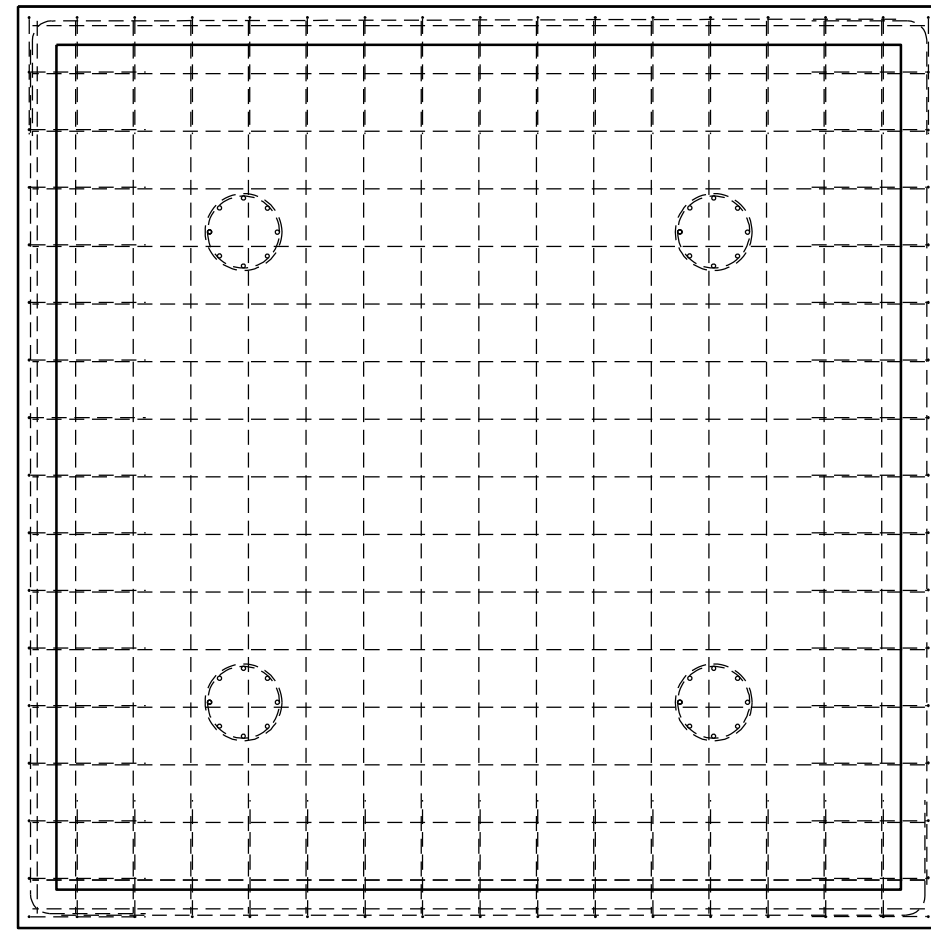
**STATE OF ILLINOIS
DEPARTMENT OF TRANSPORTATION**

| | | | |
|-------------------|-------|-----------|--------------|
| PLAN SHEET | | | |
| SCALE: | SHEET | OF SHEETS | STA. TO STA. |

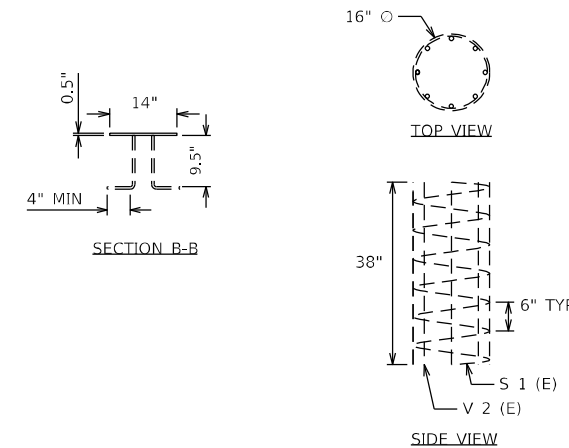
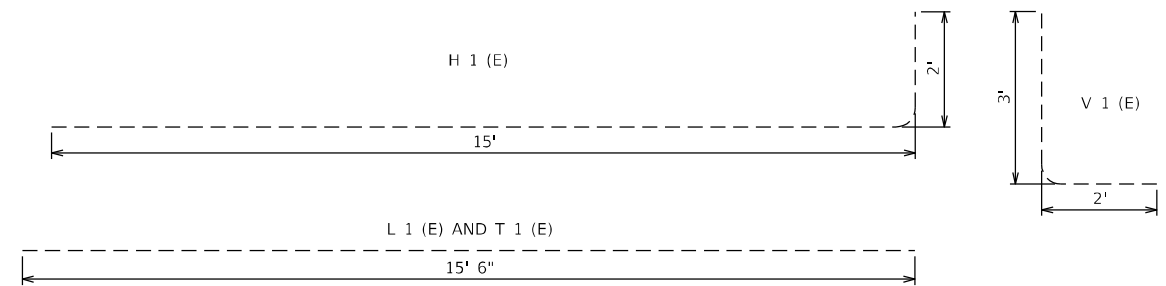
| | | | | |
|-----------|-----------------------|----------|--------------------|-----------|
| F.A. RTE. | SECTION | COUNTY | TOTAL SHEETS | SHEET NO. |
| VAR | D7 EMULSION TANK 2024 | RICHLAND | 6 | 4 |
| | | | CONTRACT NO. 74C38 | |
| | | ILLINOIS | FED. AID PROJECT | |



PLAN VIEW



SECTION A-A



| BILL OF MATERIAL | | | | |
|--------------------------------------|-----|------|--------|-------|
| BAR | NO. | SIZE | LENGTH | SHAPE |
| H 1 (E) | 12 | #5 | 17'-0" | |
| L 1 (E) | 34 | #5 | 15'-6" | |
| S 1 (E) | 4 | #3 | 27'-4" | |
| T 1 (E) | 34 | #5 | 15'-6" | |
| V 1 (E) | 66 | #5 | 5'-0" | |
| V 2 (E) | 32 | #7 | 3'-2" | |
| REINFORCEMENT BARS, EPOXY COATED | | | POUND | 2,130 |
| CONCRETE STRUCTURE FOR EMULSION TANK | | | CU YD | 15.1 |

MODEL: Default
 FILE: 74438.dwg
 PROJECT: 74438
 DRAWING: 74438.dwg
 DATE: 7/5/2023

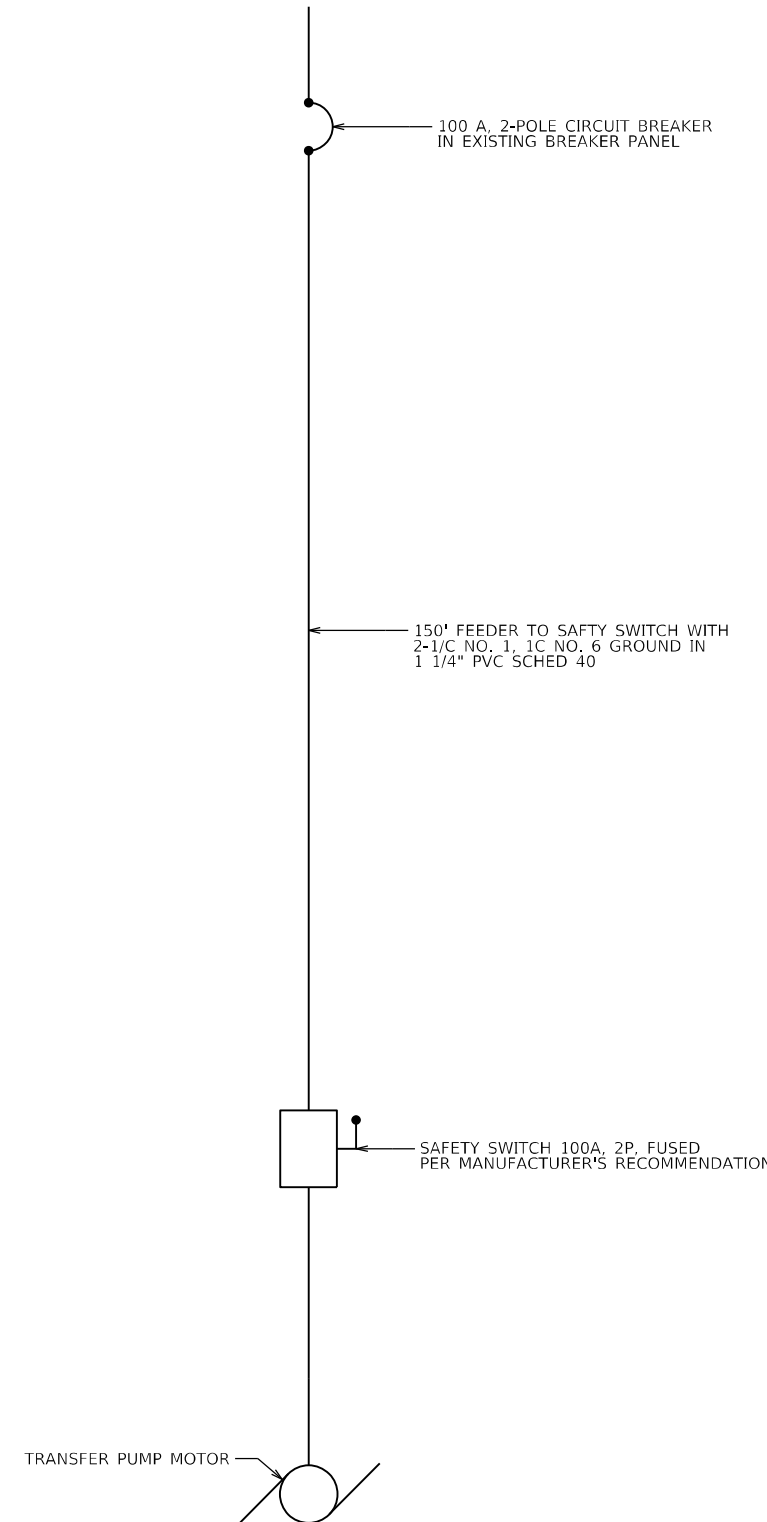
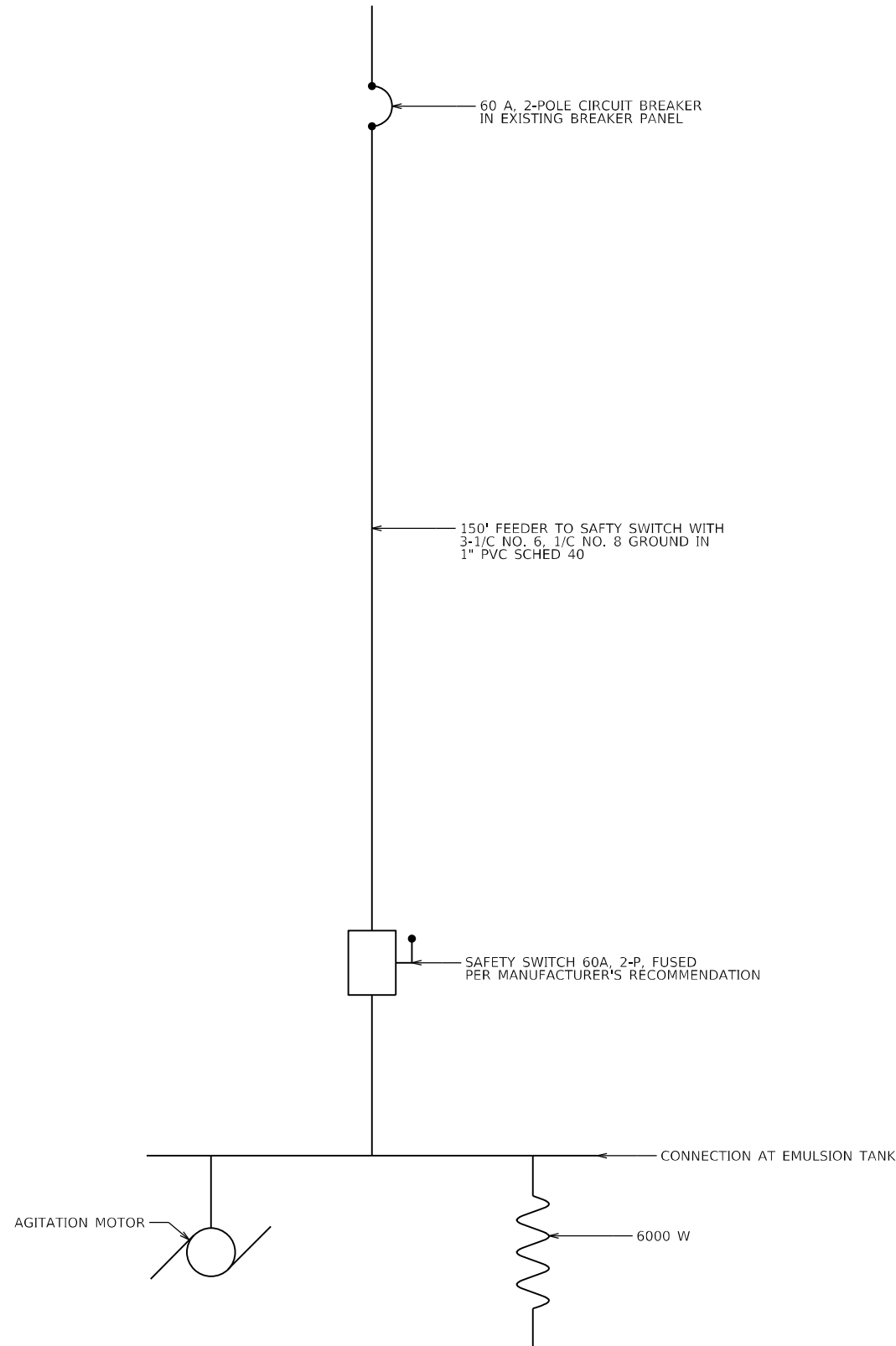
| | | |
|------------------------------|------------|-----------|
| USER NAME = jessica.wille | DESIGNED - | REVISED - |
| PLOT SCALE = 100,0000' / in. | DRAWN - | REVISED - |
| PLOT DATE = 7/5/2023 | CHECKED - | REVISED - |
| | DATE - | REVISED - |

STATE OF ILLINOIS
 DEPARTMENT OF TRANSPORTATION

DETAIL SHEET

SCALE: SHEET OF SHEETS STA. TO STA.

| | | | | |
|---------------------------|-----------------------|----------|--------------------|-----------|
| F.A. RTE. | SECTION | COUNTY | TOTAL SHEETS | SHEET NO. |
| VAR | D7 EMULSION TANK 2024 | RICHLAND | 6 | 5 |
| | | | CONTRACT NO. 74C38 | |
| ILLINOIS FED. AID PROJECT | | | | |



MODEL: Default
 FILE: \\mfc-pw-bentley.com\P\W\DOT\Documents\DOT Office\Dir\dr. 7\Project\74C38\CADD\DATA\CAD\Sheet\74C38-eh-draw.dgn

| | | |
|------------------------------|------------|-----------|
| USER NAME = jessica.hille | DESIGNED - | REVISED - |
| | DRAWN - | REVISED - |
| PLOT SCALE = 100,0000' / in. | CHECKED - | REVISED - |
| PLOT DATE = 7/5/2023 | DATE - | REVISED - |

**STATE OF ILLINOIS
DEPARTMENT OF TRANSPORTATION**

SCHEMATIC SHEET

SCALE: SHEET OF SHEETS STA. TO STA.

| | | | | |
|--------------------|-----------------------|----------|---------------------------|-----------|
| F.A. RTE. | SECTION | COUNTY | TOTAL SHEETS | SHEET NO. |
| VAR | D7 EMULSION TANK 2024 | RICHLAND | 6 | 6 |
| CONTRACT NO. 74C38 | | | ILLINOIS FED. AID PROJECT | |