

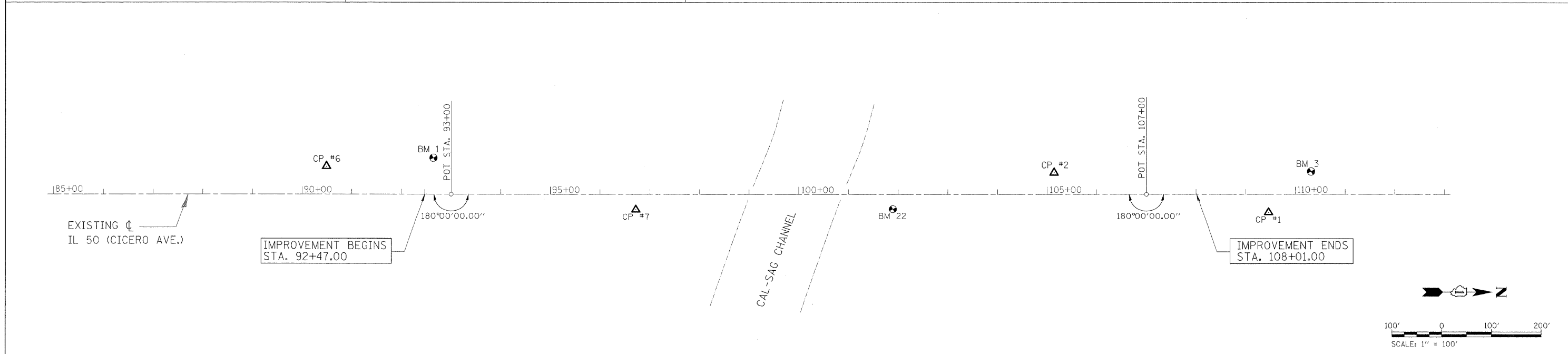
BENCHMARK 1  
CHISELLED "□" IN CONC. BASE OF MAST ARM  
NW CORNER OF CICERO AVE. AND CAL-SAG ROAD.  
STA. = 92+98, OFFSET = 61.3' LEFT  
ELEV. = 596.70

BENCHMARK 22  
CHISELLED "□" IN NE WINGWALL OF IL 50 BRIDGE  
OVER CAL-SAG CHANNEL.  
STA. = 101+88, OFFSET = 30.7' RIGHT  
ELEV. = 606.15

BENCHMARK 3  
CHISELLED "□" IN CONC. BASE OF MAST ARM  
SW CORNER OF CICERO AVE. AND 128TH PLACE.  
STA. = 110+27, OFFSET = 46.5' LEFT  
ELEV. = 596.53

NOTES:

- HORIZONTAL AND VERTICAL CONTROL PROVIDED BY IDOT.
- ELEVATIONS FOR CONTROL POINTS PROVIDED FOR INFORMATION ONLY. ALL ELEVATIONS FOR CONSTRUCTION SHALL UTILIZE BENCHMARK ELEVATIONS.



<b>LIN ENGINEERING, LTD.</b> Consulting Engineers Chatham, Illinois	USER NAME = Plotted by flin	DESIGNED - GLW	REVISED -	<b>STATE OF ILLINOIS</b> <b>DEPARTMENT OF TRANSPORTATION</b>	<b>ALIGNMENT, TIES &amp; BENCHMARKS</b> <b>IL 50 (CICERO AVE.) OVER CAL SAG CHANNEL</b>		F.A.P. RTE. 350	SECTION 3068 A-B-R-1	COUNTY COOK	TOTAL SHEETS 57	SHEET NO. 7
	PLOT SCALE = 100.000' / IN.	CHECKED - GLW	REVISED -		NOT TO SCALE	SHEET NO. 1 OF 1 SHEETS	STA. 93+00.00 TO STA. 107+00.00	JOB NO. D-91-428-11	CONTRACT NO. 60N88		FED. ROAD DIST. NO. 1   ILLINOIS   FED. AID PROJECT
	PLOT DATE = 9/9/2011	DATE - 9/2/11	REVISED -								