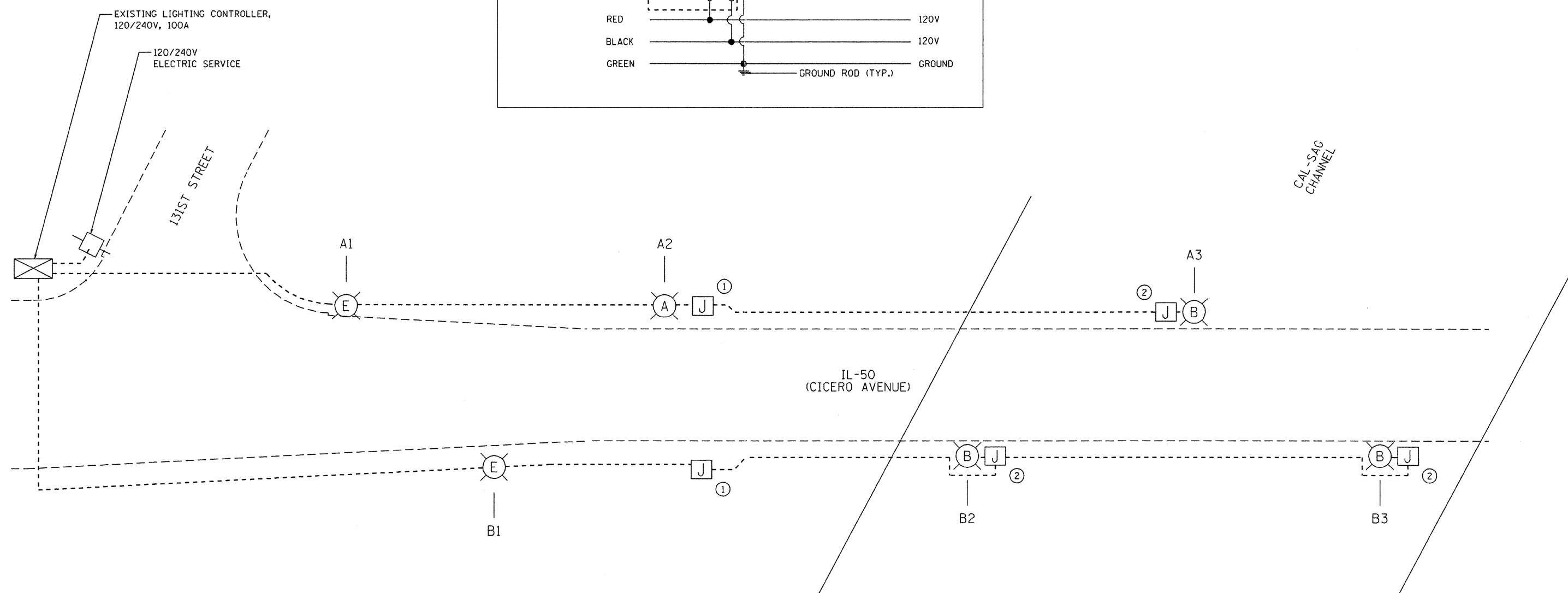
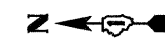
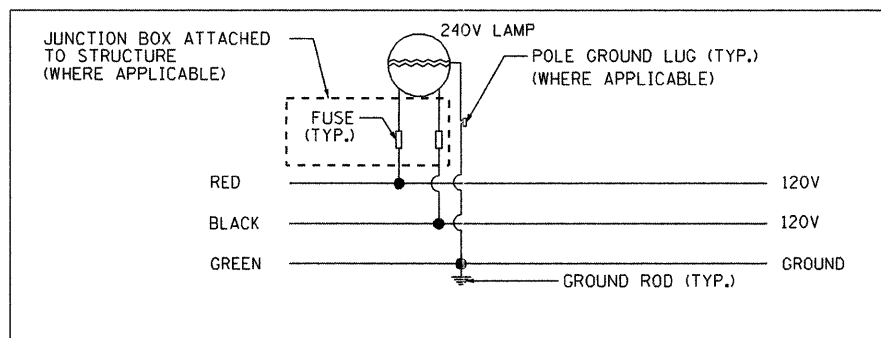


TYPICAL POLE WIRING DIAGRAM



LEGEND

- EXISTING POWER POLE / ELECTRIC UTILITY SERVICE CONNECTION
- JUNCTION BOX, STAINLESS STEEL, ATTACHED TO STRUCTURE 18" X 12" X 8"
- JUNCTION BOX, STAINLESS STEEL, ATTACHED TO STRUCTURE 8" X 8" X 6"
- EXISTING LIGHTING CONTROLLER, 120/240V, 100A
- LIGHT POLE, EXISTING 250W LUMINAIRE
- LIGHT POLE, ALUMINUM, 40 FT. M.H., 12 FT. MAST ARM 250W LUMINAIRE
- LUMINAIRE AND 4 FT. MAST ARM 250W LUMINAIRE MOUNTED ON BRIDGE STRUCTURE
- ELECTRIC CABLE IN CONDUIT, 600V (XLP-TYPE USE) 2-1/C NO. 6 AND 1/C NO. 6 GROUND

\\svr2822.pub1.cpe.com\00003398.000\design\Lighting\016-0421\Cable Plan_Roadway.dgn

	USER NAME = wlaneester	DESIGNED - JMV	REVISED - 10/5/2011	STATE OF ILLINOIS DEPARTMENT OF TRANSPORTATION	ILL. 50 OVER THE CAL SAG CHANNEL STRUCTURE NO. 016-0421 ROADWAY LIGHTING ONE LINE DIAGRAM	F.A.P. RTE. 350	SECTION 3068 A-B-R-1	COUNTY COOK	TOTAL SHEETS 57	SHEET NO. 15
	PLOT SCALE = 40,0000' / IN. PLOT DATE = 10/5/2011	DRAWN - JMK CHECKED - JMV DATE - 9/2/11	REVISED - ADDENDUM #1 REVISED - REVISED -			SCALE: 1" = 20' SHEET NO. OF SHEETS STA. TO STA.	CONTRACT NO. 60N88 ILLINOIS FED. AID PROJECT			