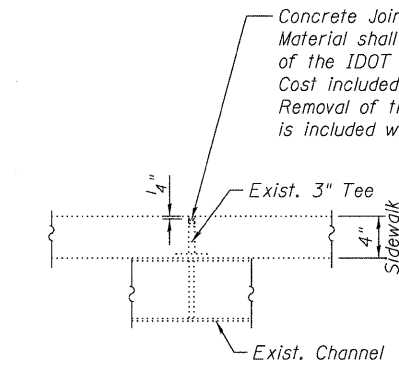
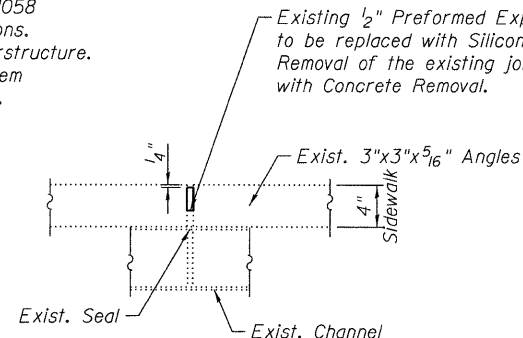


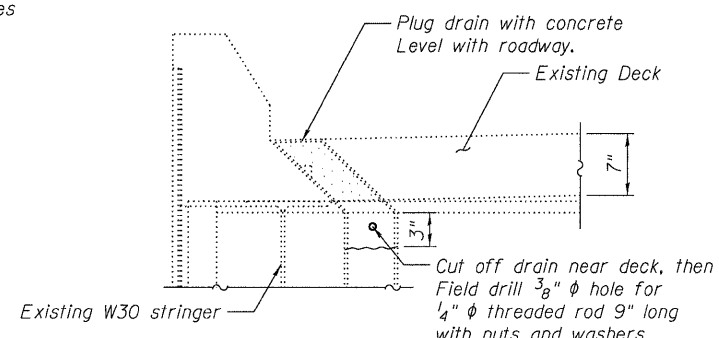
DECK PLAN



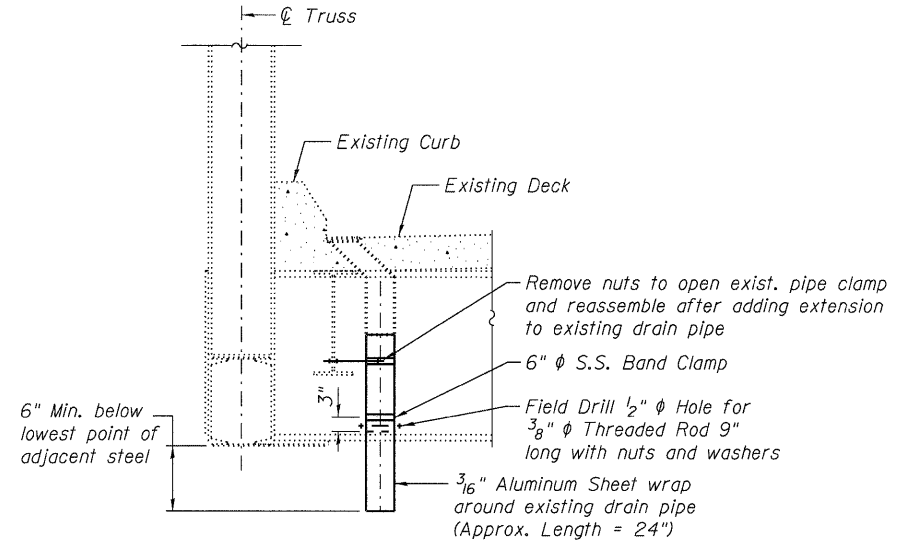
SIDEWALK JOINT DETAIL
(Typ. L1, L2, L4, L5, L6, L8 & L9)



SIDEWALK JOINT DETAIL
(Typ. L3 & L7)



SECTION AT DRAIN
DRAIN ELIMINATION DETAIL
(8 thus)



FLOOR DRAIN EXTENSION
(24 Thus)

Cost of field drilling and all associated material or floor drain extension included with "Floor Drain Extension".

NOTES:

- Deck condition survey performed January 2011.
- Repairs should include but not be limited to the areas shown on the plans. The actual areas to be determined by the engineer at the time of construction.
- The Engineer shall record the actual deck repair areas in order to document as-built condition for future reference.
- For expansion joint replacement, see sheets S-6, S-7 & S-8.
- Any reinforcement bars that are damaged during concrete repair operations shall be repaired or replaced using an approved bar splicer or anchorage system. Cost included with "Concrete Removal".
- Scarification and overlay includes Bridge Deck and approach slabs.

LEGEND

- Deck Slab Repair (Partial Depth)
Protective shield to be placed under all Partial Depth Patches. Limits of Protective Shield should extend from stringer to stringer and 2' wider than patch in each direction.
- Concrete Removal

BILL OF MATERIAL

ITEM	UNIT	QUANTITY
Concrete Bridge Deck Scarification 3/8"	Sq. Yd.	2,300
Bridge Deck Thin Polymer Overlay 3/8"	Sq. Yd.	2,300
Concrete Removal	Cu. Yd.	26.1
Floor Drain Extension	Each	24
Plug Existing Deck Drains	Each	8
Silicone Joint Sealer 1/2"	Foot	22
Deck Slab Repair (Partial Depth)	Sq. Yd.	3
Protective Shield	Sq. Yd.	60

N:\PROJ\03398\00\Design\Structural\CAD\03398\00_04_Deck_Repair_Plan.dgn

Ciorba Group, Inc.
CONSULTING ENGINEERS
2007 North Commonwealth Avenue
Suite 400 - Chicago, Illinois 60664
Tel: 773.776.4200
Fax: 773.776.4214
Email: ciorbagroup@comcast.net

USER NAME = akhan	DESIGNED - BWS	REVISED -
PLOT SCALE = 1/8" = 1' / 1"	CHECKED - AMK	REVISED -
PLOT DATE = 9/9/2011	DRAWN - RD	REVISED -
	CHECKED - AMK	REVISED -

STATE OF ILLINOIS
DEPARTMENT OF TRANSPORTATION

DECK REPAIR PLAN
STRUCTURE NO. 016-0421
SHEET NO. S-4 OF S-27 SHEETS

F.A.P. RTE. 350	SECTION 3068 A-B-R-1	COUNTY COOK	TOTAL SHEETS 57	SHEET NO. 27
CONTRACT NO. 60N88				ILLINOIS FED. AID PROJECT