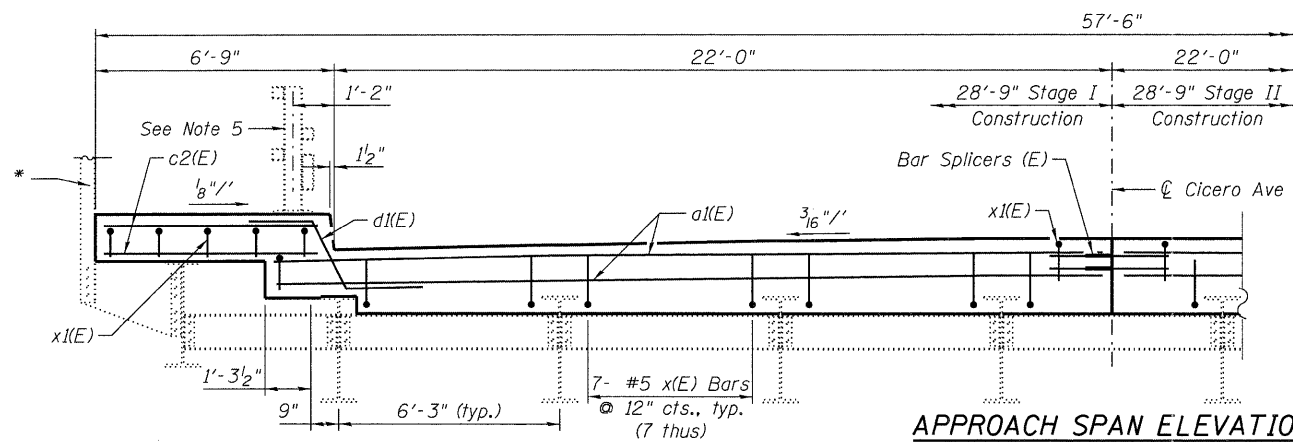


* Railing to be removed, stored and reattached as needed. Removal and reattachment of Railing included in Concrete Removal cost.

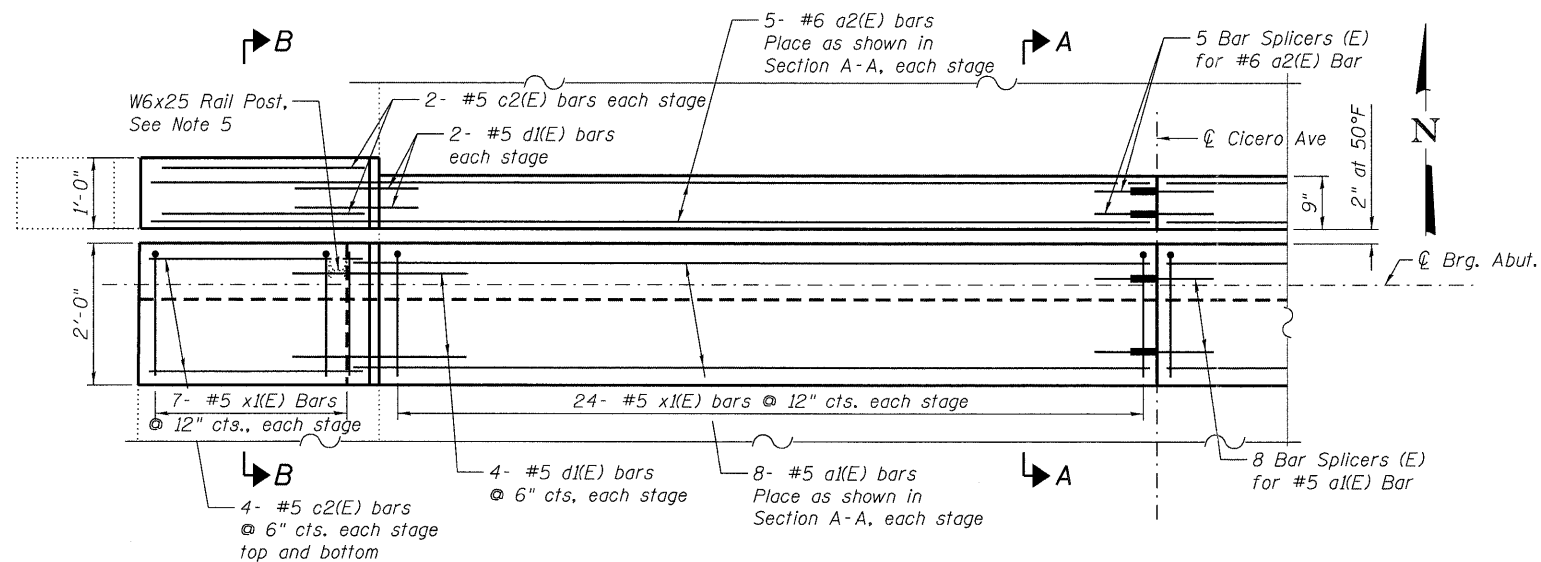
NORTH ABUTMENT ELEVATION

Looking North
(Symmetrical about C)
(South Abutment similar, opposite hand)



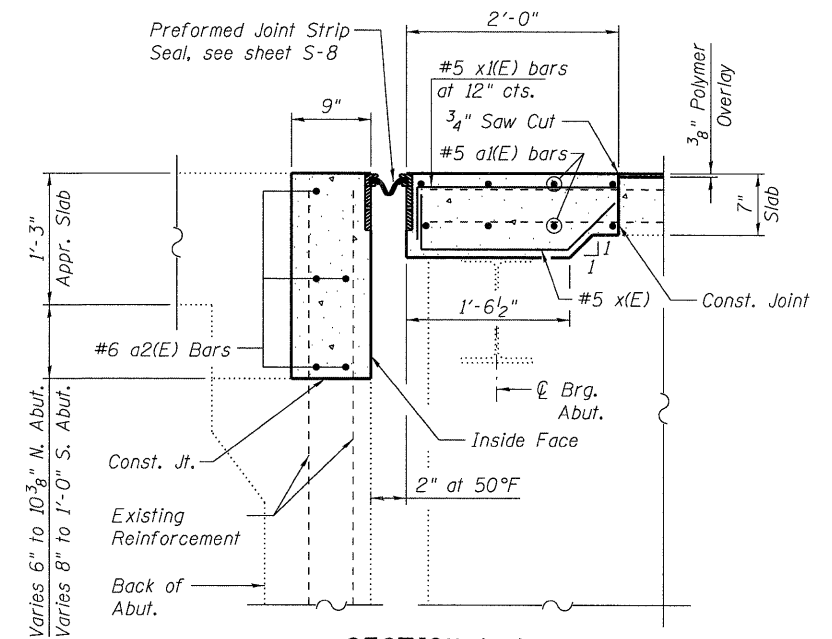
APPROACH SPAN ELEVATION

Looking North
(Symmetrical about C)
(South Abutment similar, opposite hand)



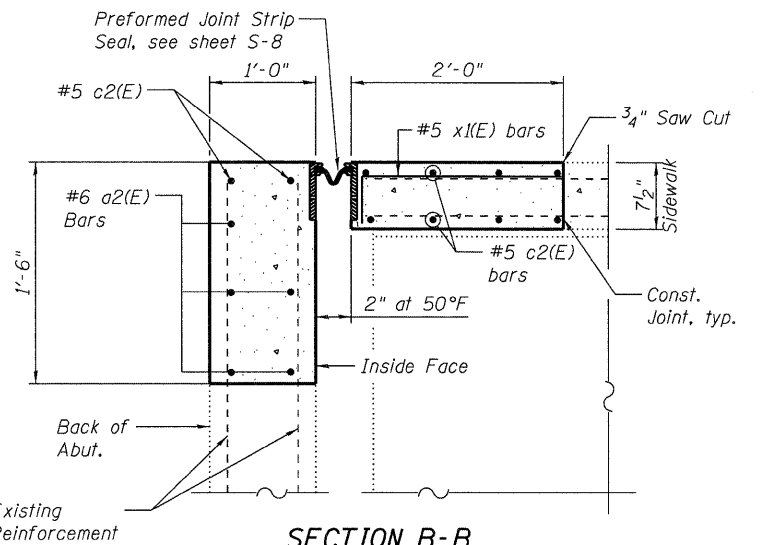
NORTH ABUTMENT PLAN

(Symmetrical about C)
(South Abutment similar by rotation)



SECTION A-A

Thru Deck



SECTION B-B

Thru Sidewalk

NOTES:

1. Work this sheet with sheets S-3 and S-7.
2. Existing reinforcement shown should be blast cleaned, straightened, and incorporated into new construction. Cost included with Concrete Removal.
3. Bar bending details shown on sheet S-7.
4. For Joint Detail see sheet S-8.
5. Traffic Rail Posts to be removed, stored and replaced. Drill and grout 4- 1" ϕ x 12" Anchor Bolts into traffic rail post base plate after post is relocated. Weld NE & SW Traffic post to existing Base Plate. Cost included in cost of Concrete Superstructure.
6. Joint openings shall be adjusted according to Article 520.04 of the Standard Specifications when the deck is poured at an ambient temperature other than 50°F.
7. Concrete Sealer to be applied to the inside face of proposed backwall.
8. Perimeter of concrete removal areas shall be saw cut 3/4" prior to removal of the concrete.

BILL OF MATERIAL

Two Abutments

Bar	No.	Size	Length	Shape
a1(E)	32	#5	23'-7"	—
a2(E)	20	#6	28'-5"	—
c2(E)	40	#5	6'-5"	—
d1(E)	24	#5	6'-1"	—
x(E)	98	#5	2'-2"	—
x1(E)	124	#5	2'-2"	—
Concrete Superstructure			Cu. Yd.	12.9
Bar Splicers			Each	26
Reinforcement Bars, Epoxy Coated			Pound	2,570
Protective Coat			Sq. Yd.	37
Concrete Sealer			Sq. Ft.	173

N:\PROJ\03398\00\Design\Structural\CAD\03398\00_06 Joint Constr. N and S Abut.dgn

Clorba Group, Inc.
CONSULTING ENGINEERS
1507 North Commercial Avenue
Suite 402 Chicago, Illinois 60642
Tel: 773.776.4000
Fax: 773.776.4014
Email: clorba@clorba.com

USER NAME = akhan	DESIGNED BWS	REVISED -
PLOT SCALE = 2/8" = 1'	CHECKED AMK	REVISED -
PLOT DATE = 9/9/2011	DRAWN RD	REVISED -
	CHECKED AMK	REVISED -

**STATE OF ILLINOIS
DEPARTMENT OF TRANSPORTATION**

**JOINT CONSTRUCTION, NORTH AND SOUTH ABUTMENTS
STRUCTURE NO. 016-0421**

F.A.P. RTE. 350	SECTION 3068 A-B-R-1	COUNTY COOK	TOTAL SHEETS 57	SHEET NO. 29
SHEET NO. S-6 OF S-27 SHEETS			CONTRACT NO. 60N88	
ILLINOIS FED. AID PROJECT				