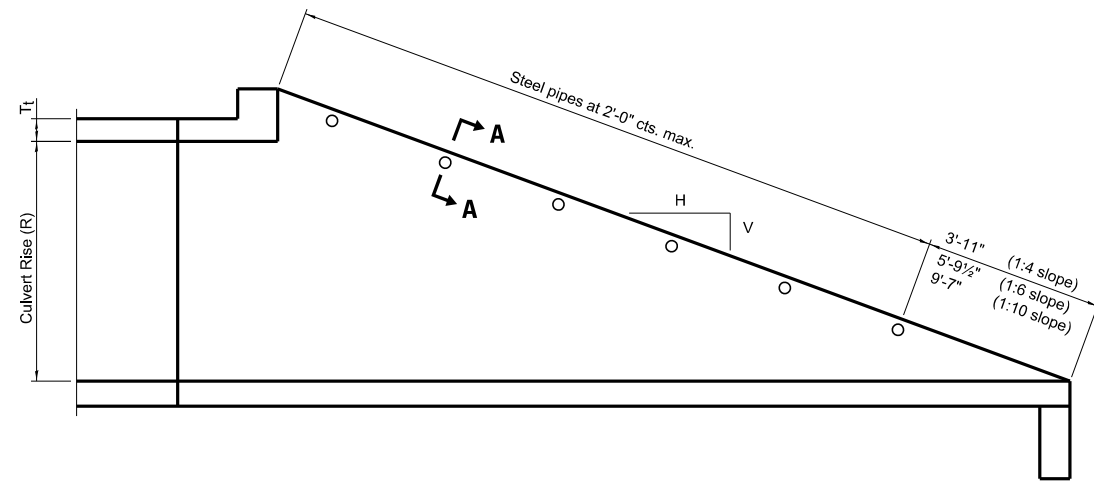
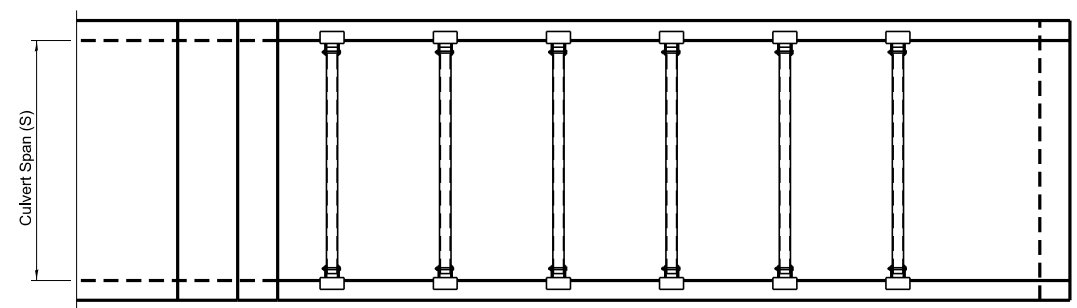


TRAVERSABLE PIPE GRATE FOR PARALLEL DRAINAGE STRUCTURE



LONGITUDINAL SECTION



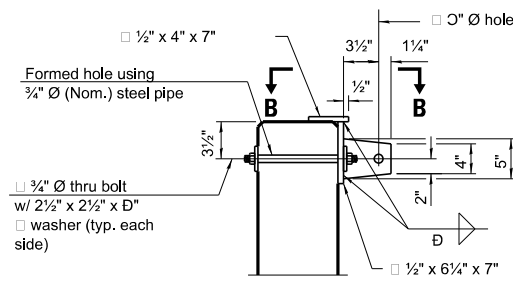
PLAN VIEW

GENERAL NOTES

The minimum edge distance from the center of a hole to the free edge of a structural shape or plate shall be 1½" unless noted otherwise.

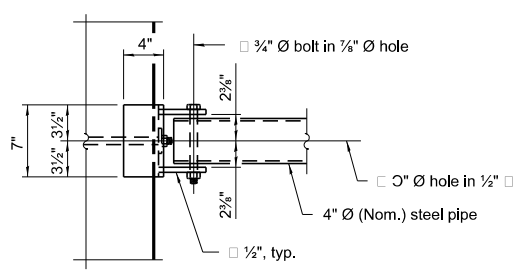
This standard shall only be used on concrete end sections for parallel drainage structures.

The Contractor may install the thru bolts using drilling and grouting in lieu of providing a formed hole using steel pipe. Installation shall be in accordance with Article 509.06 using a method that results in the annulus surrounding the bolt being completely filled with adhesive. The method of drilling shall not result in spalled concrete at the exit face. Epoxy grouted thru bolts shall be snug tightened followed by an additional 1/3 turn on the interior nut at final installation. Cost included with Traversable Pipe Grate.



SECTION A-A

(4" Ø pipe not shown for clarity.)



VIEW B-B

MODEL: ###
FILE NAME: c:\pwworking\pcharng\dms415601500-599 STRUCTURES.dgn

	USER NAME = Anthony.Grunstad	DESIGNED -	REVISED -	STATE OF ILLINOIS DEPARTMENT OF TRANSPORTATION						F.A RTE.	SECTION	COUNTY	TOTAL SHEETS	SHEET NO.					
		DRAWN -	REVISED -																
		CHECKED -	REVISED -																
	PLOT DATE = 2/28/2025	DATE -	REVISED -																
					SCALE:	SHEET ####	OF	SHEETS	STA.	TO STA.	CONTRACT NO.								
										ILLINOIS					FED. AID PROJECT				