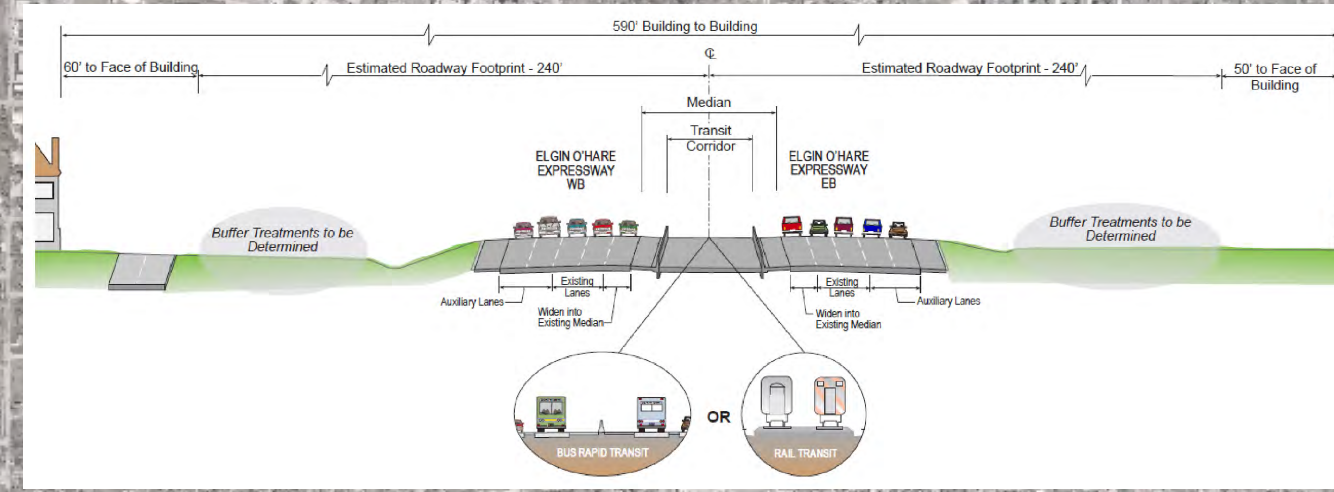
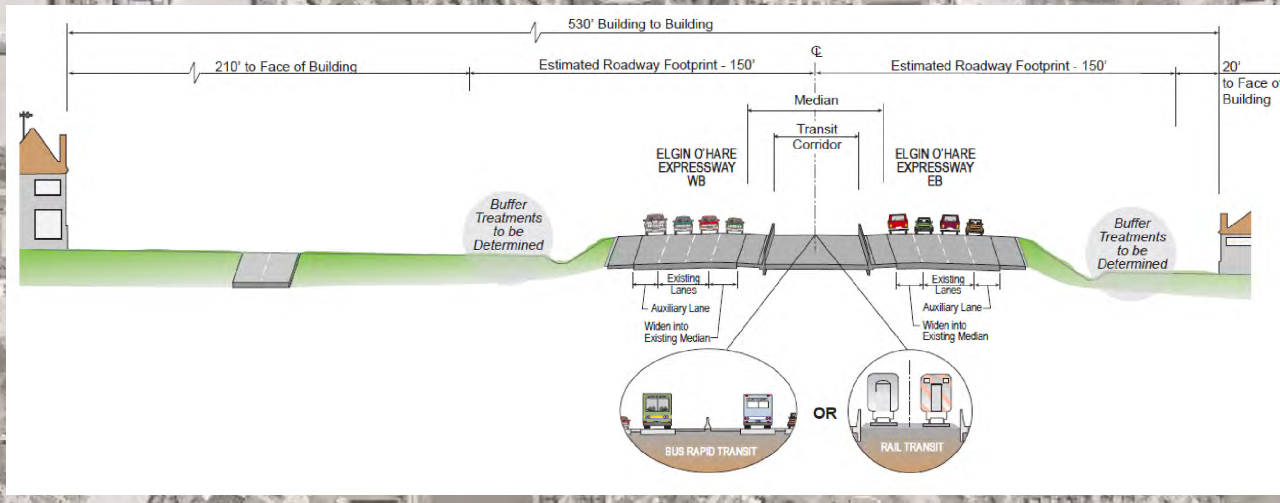


**LEGEND**

- INTERSTATE AND RAMPS
- ARTERIAL OR LOCAL STREETS
- RETAINING WALL
- BRIDGE
- TUNNEL
- NUMBER OF LANES AND DIRECTION
- ROADWAY REMOVAL
- 3 OR I-PASS TOLL BOOTHS
- PRELIMINARY ESTIMATED FOOTPRINT



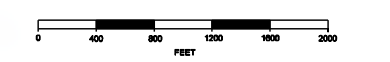
**PRELIMINARY**

ELGIN O'HARE WEST BYPASS  
communities. opportunities. solutions.

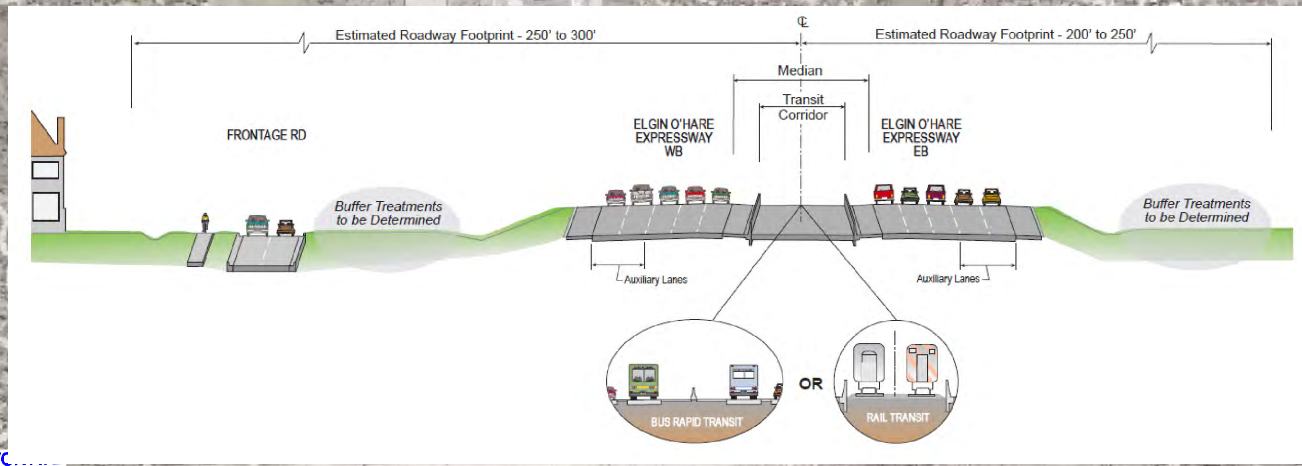
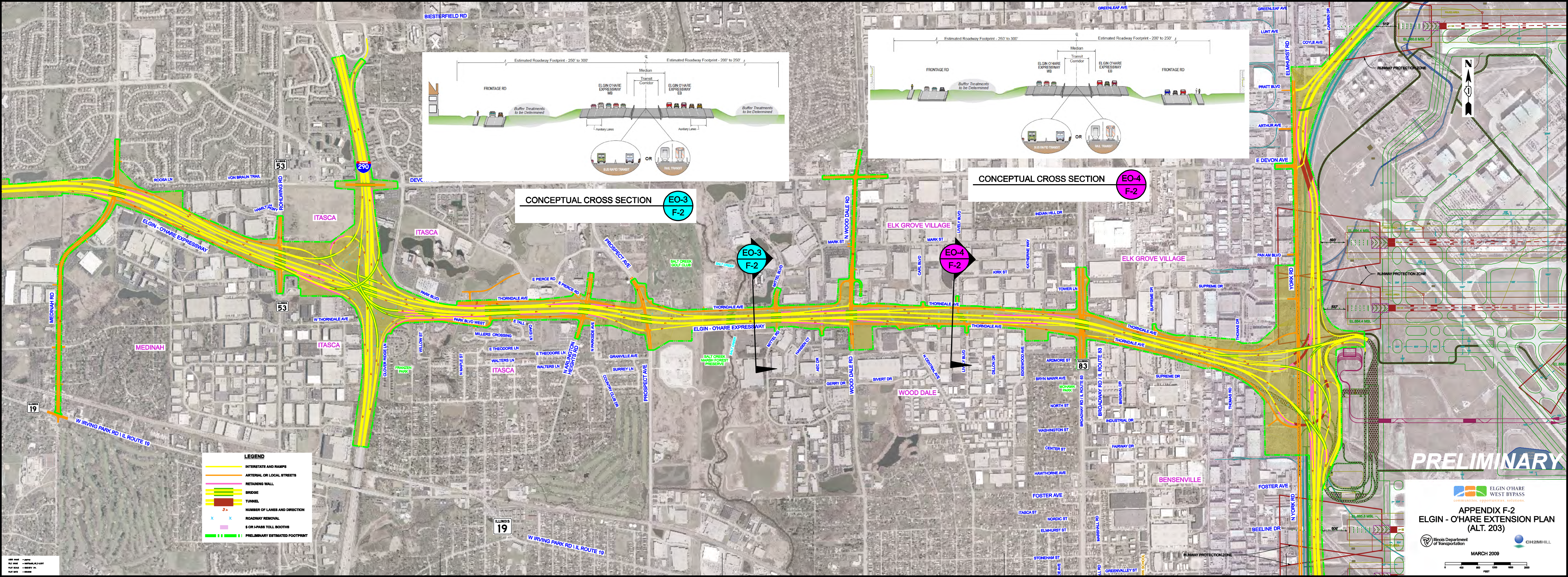
**APPENDIX F-1  
ELGIN - O'HARE WIDENING PLAN  
(ALL ALTERNATIVES)**

Illinois Department of Transportation | CH2MHILL

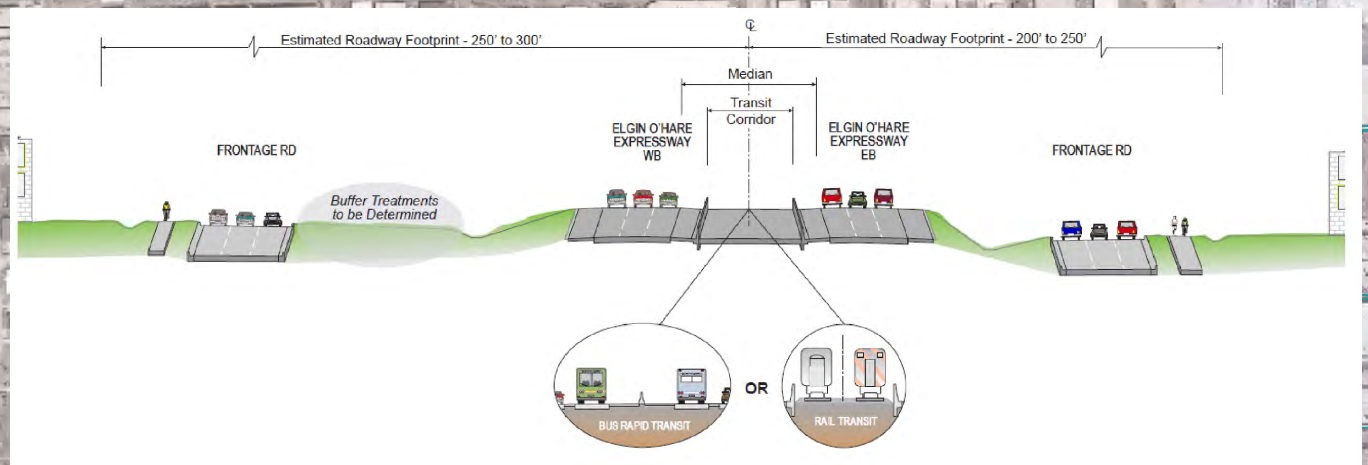
MARCH 2009



DATE: 03/09  
FILE NAME: 090309\_011\_011.dwg  
PLOT SCALE: 1/8" = 1'-0"  
PLOT DATE: 03/09/09



CONCEPTUAL CROSS SECTION **EO-3**  
F-2



CONCEPTUAL CROSS SECTION **EO-4**  
F-2

**LEGEND**

- INTERSTATE AND RAMPS
- ARTERIAL OR LOCAL STREETS
- RETAINING WALL
- BRIDGE
- TUNNEL
- NUMBER OF LANES AND DIRECTION
- ROADWAY REMOVAL
- \$ OR I-PASS TOLL BOOTHS
- PRELIMINARY ESTIMATED FOOTPRINT

**PRELIMINARY**

**ELGIN O'HARE WEST BYPASS**  
communities. opportunities. solutions.

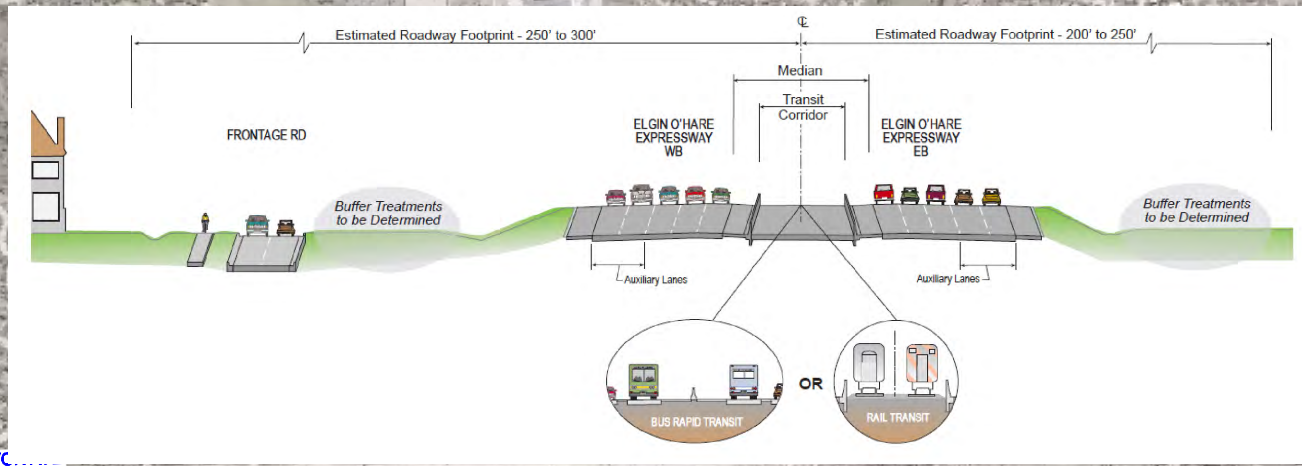
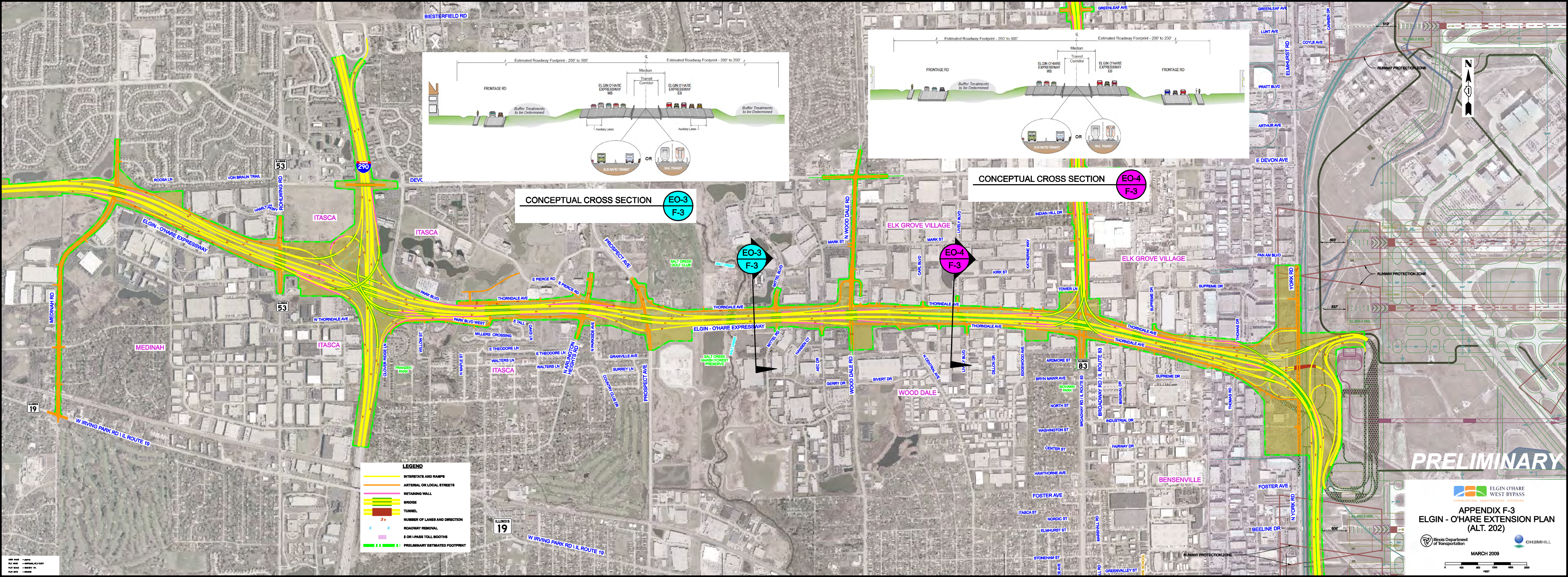
**APPENDIX F-2**  
**ELGIN - O'HARE EXTENSION PLAN**  
(ALT. 203)

Illinois Department of Transportation

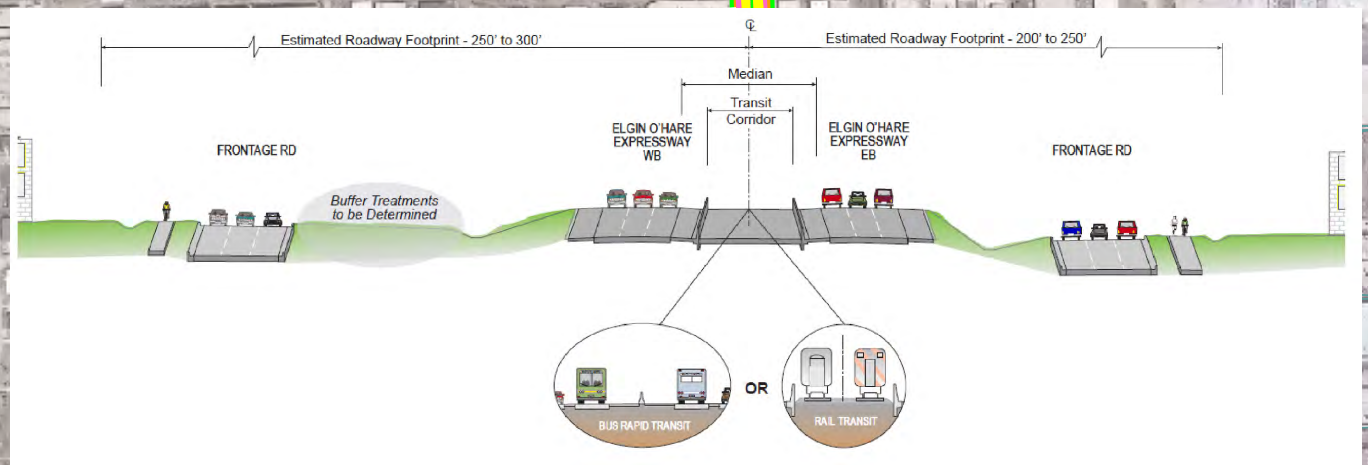
CH2MHILL

MARCH 2009

0 400 800 1200 1600 2000  
FEET



CONCEPTUAL CROSS SECTION **EO-3**  
F-3



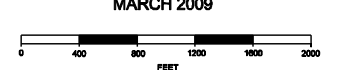
CONCEPTUAL CROSS SECTION **EO-4**  
F-3

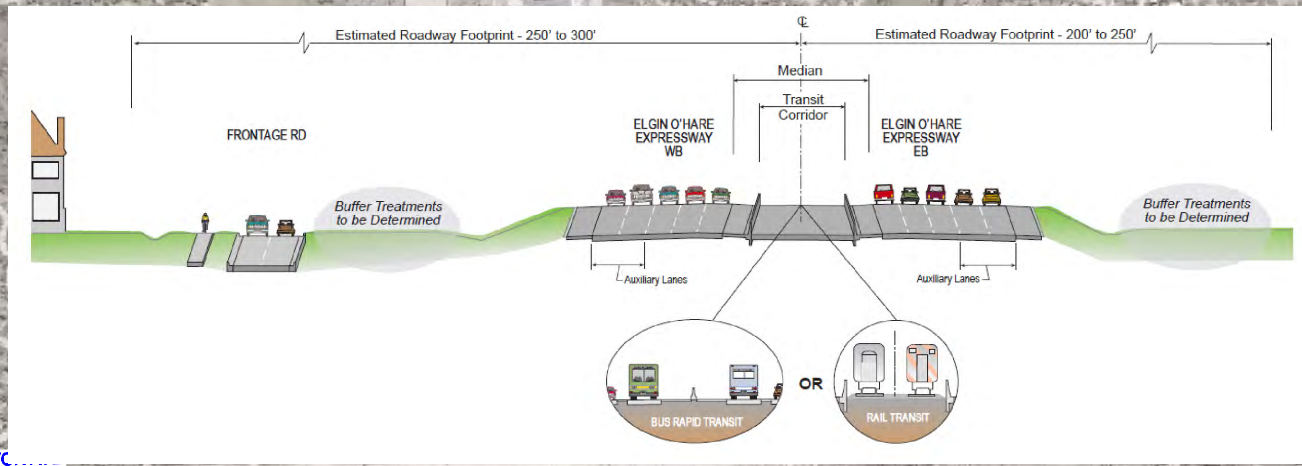
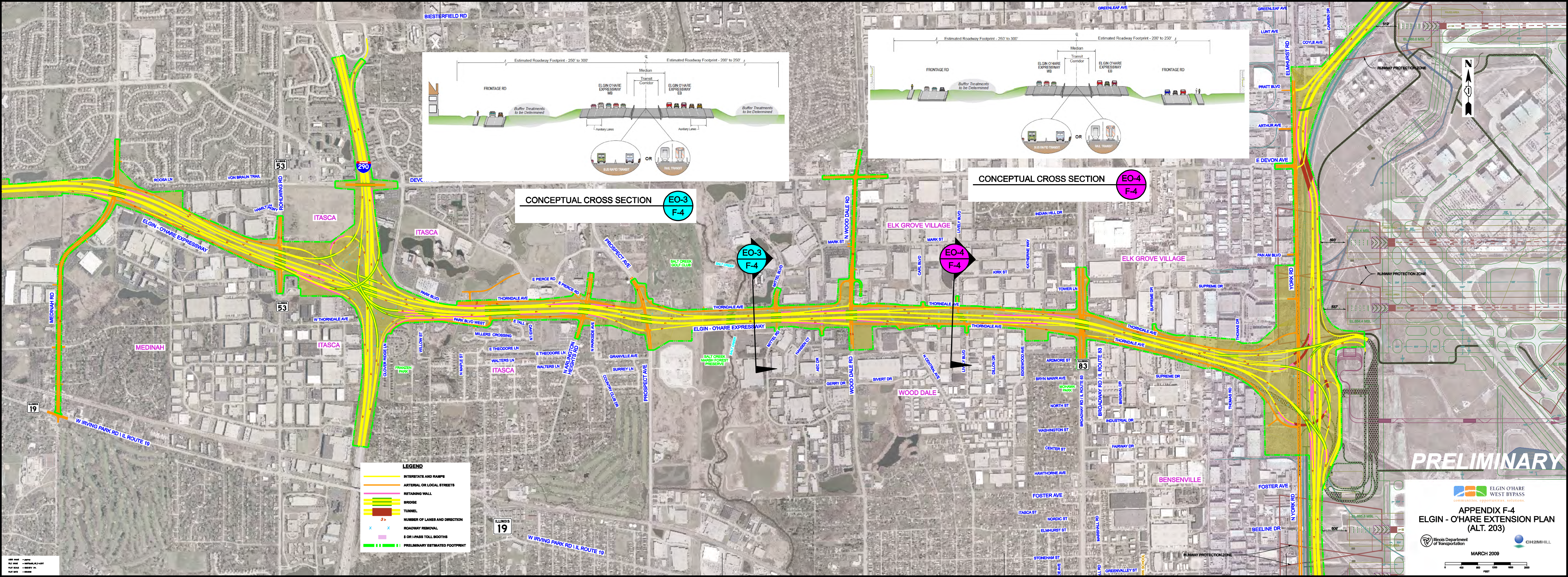
**LEGEND**

- INTERSTATE AND RAMPS
- ARTERIAL OR LOCAL STREETS
- RETAINING WALL
- BRIDGE
- TUNNEL
- ↔ NUMBER OF LANES AND DIRECTION
- x ROADWAY REMOVAL
- § OR I-PASS TOLL BOOTHS
- PRELIMINARY ESTIMATED FOOTPRINT

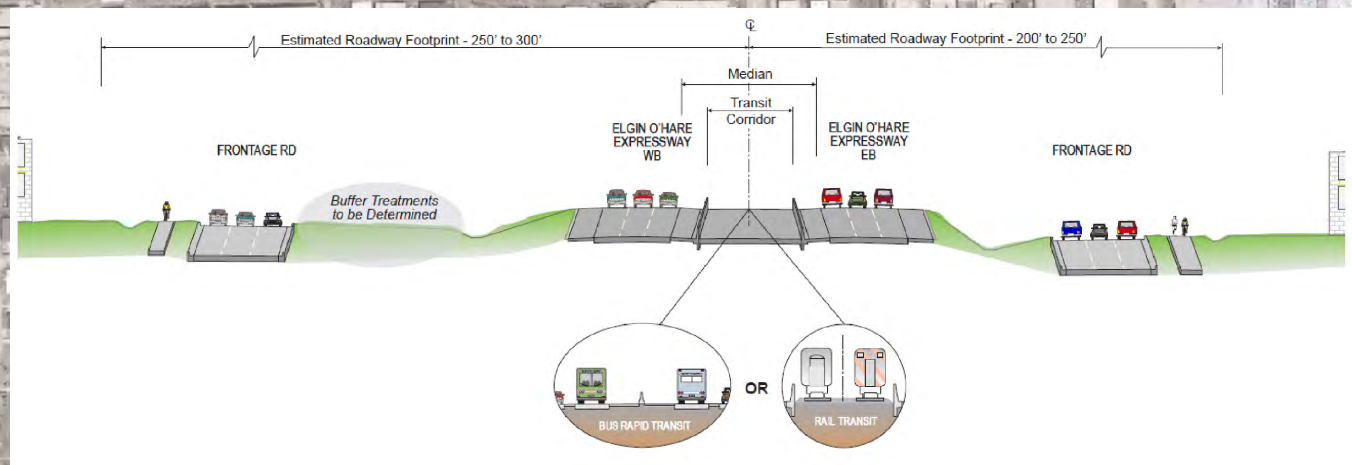
**PRELIMINARY**

**APPENDIX F-3**  
**ELGIN - O'HARE EXTENSION PLAN**  
**(ALT. 202)**  
  
 MARCH 2009





CONCEPTUAL CROSS SECTION **EO-3**  
F-4



CONCEPTUAL CROSS SECTION **EO-4**  
F-4

**LEGEND**

- INTERSTATE AND RAMPS
- ARTERIAL OR LOCAL STREETS
- RETAINING WALL
- BRIDGE
- TUNNEL
- ↔ NUMBER OF LANES AND DIRECTION
- x ROADWAY REMOVAL
- § OR I-PASS TOLL BOOTHS
- PRELIMINARY ESTIMATED FOOTPRINT

**PRELIMINARY**

**ELGIN O'HARE WEST BYPASS**  
 communities. opportunities. solutions.

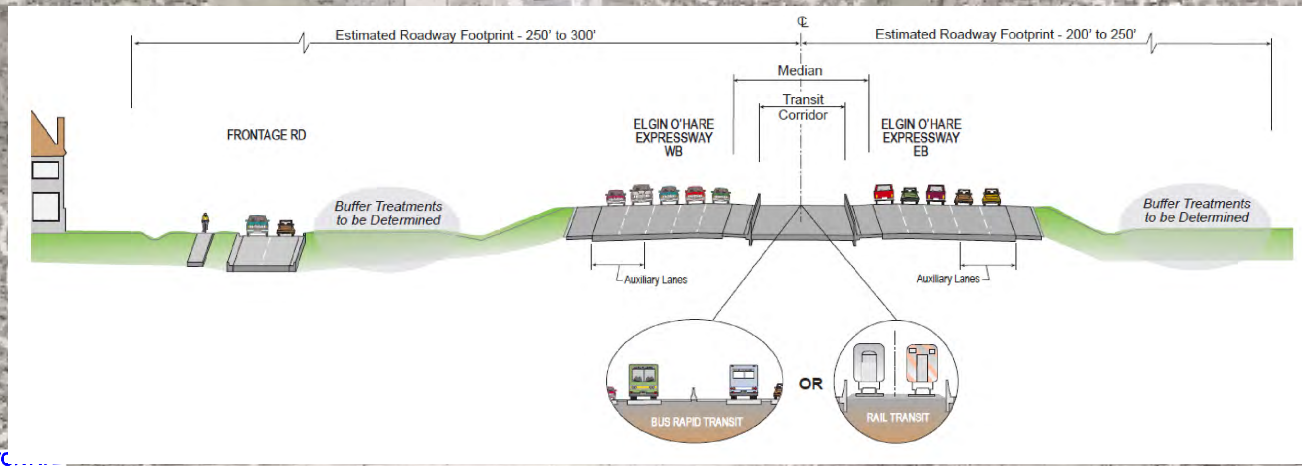
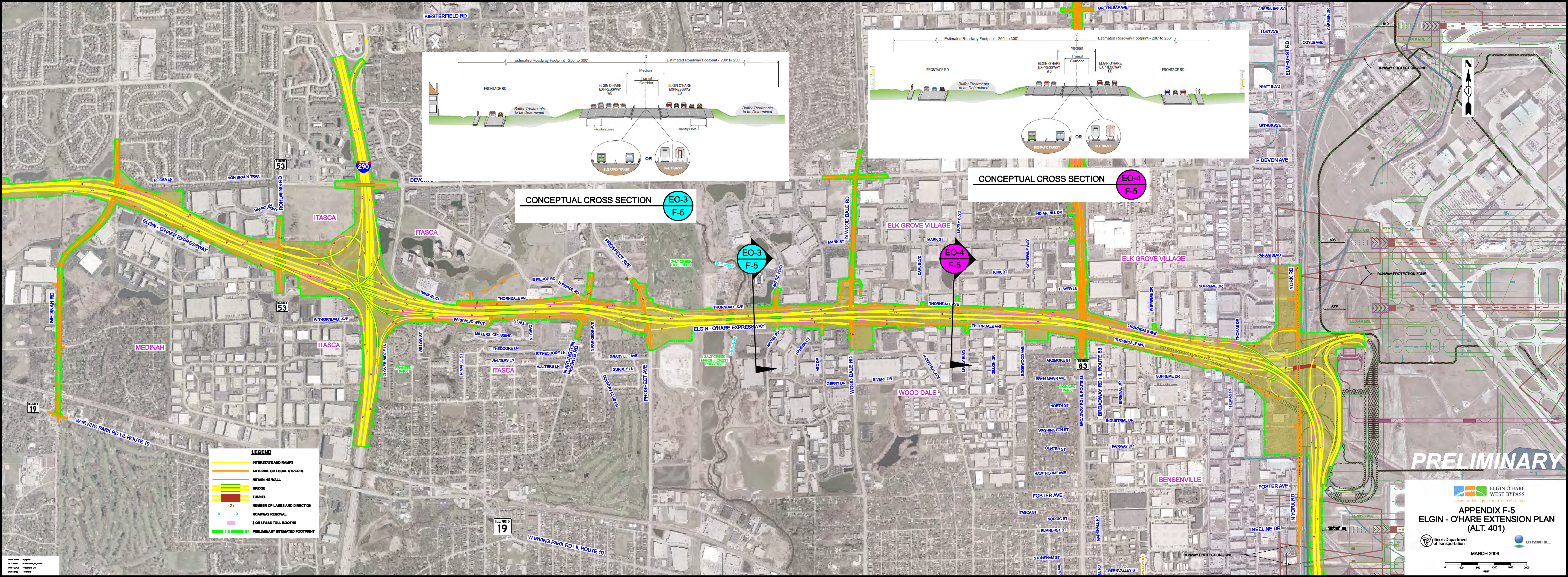
**APPENDIX F-4**  
**ELGIN - O'HARE EXTENSION PLAN (ALT. 203)**

Illinois Department of Transportation

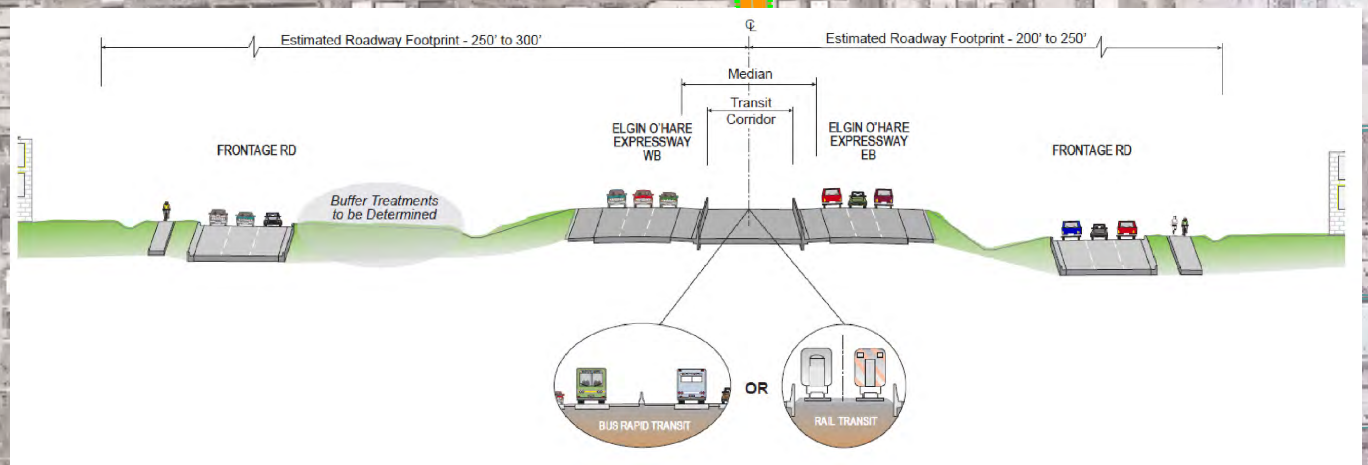
CH2MHILL

MARCH 2009

0 400 800 1200 1600 2000  
 FEET



CONCEPTUAL CROSS SECTION **EO-3**  
F-5



CONCEPTUAL CROSS SECTION **EO-4**  
F-5

**LEGEND**

- INTERSTATE AND RAMPS
- ARTERIAL OR LOCAL STREETS
- RETAINING WALL
- BRIDGE
- TUNNEL
- NUMBER OF LANES AND DIRECTION
- ROADWAY REMOVAL
- \$ OR I-PASS TOLL BOOTHS
- PRELIMINARY ESTIMATED FOOTPRINT

**PRELIMINARY**

ELGIN O'HARE WEST BYPASS  
communities. opportunities. solutions.

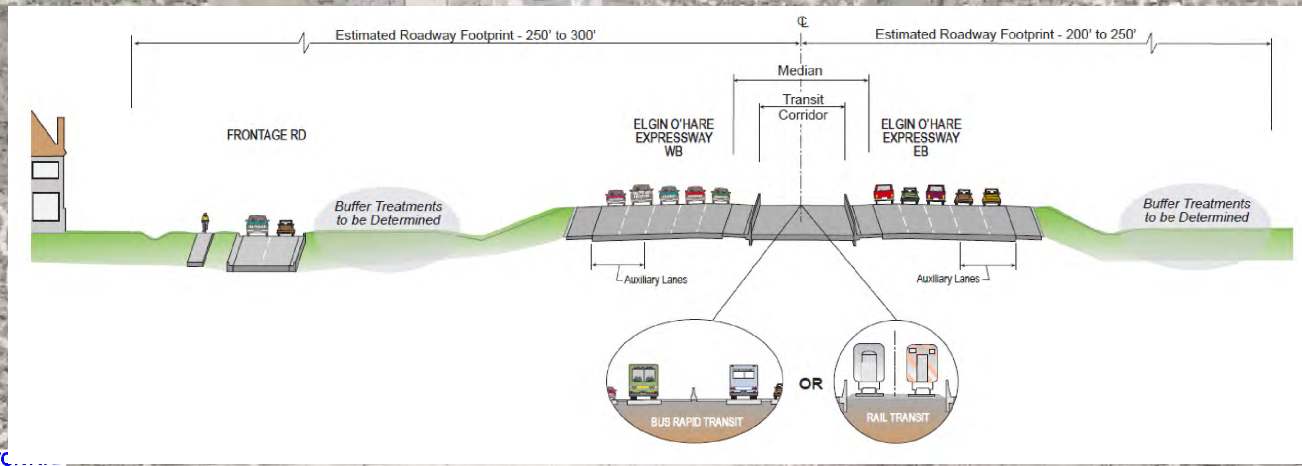
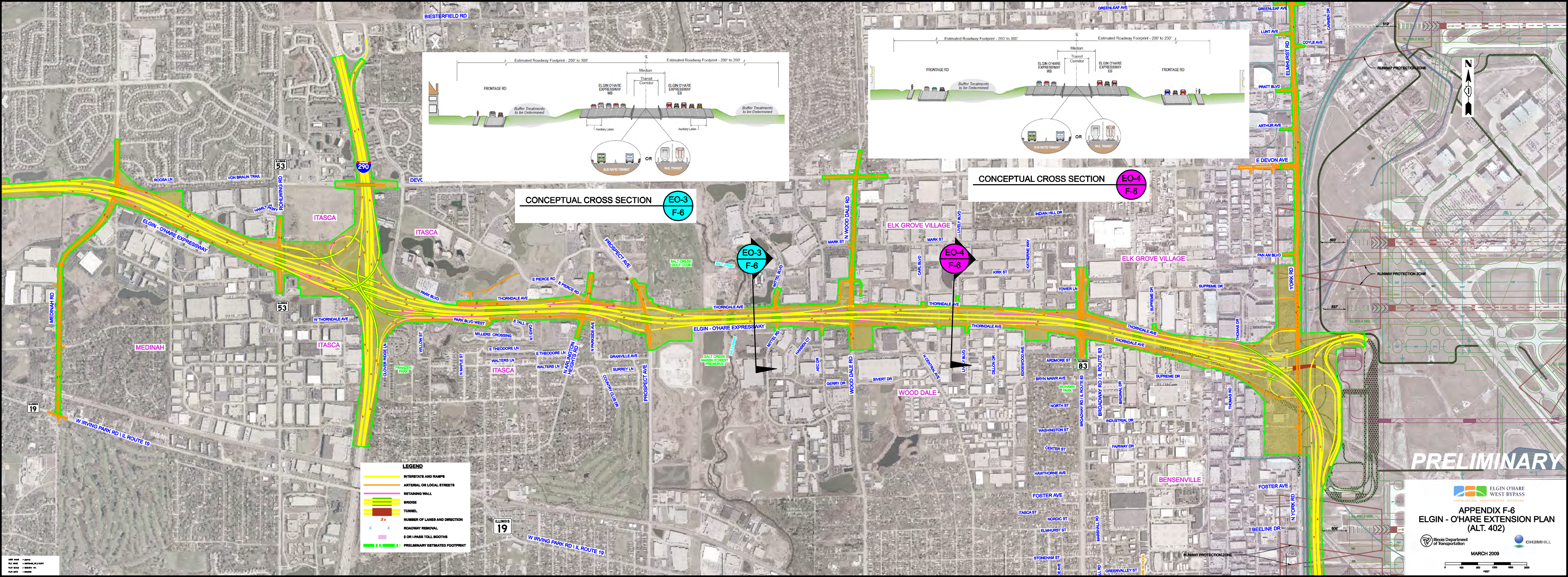
**APPENDIX F-5**  
**ELGIN - O'HARE EXTENSION PLAN (ALT. 401)**

Illinois Department of Transportation

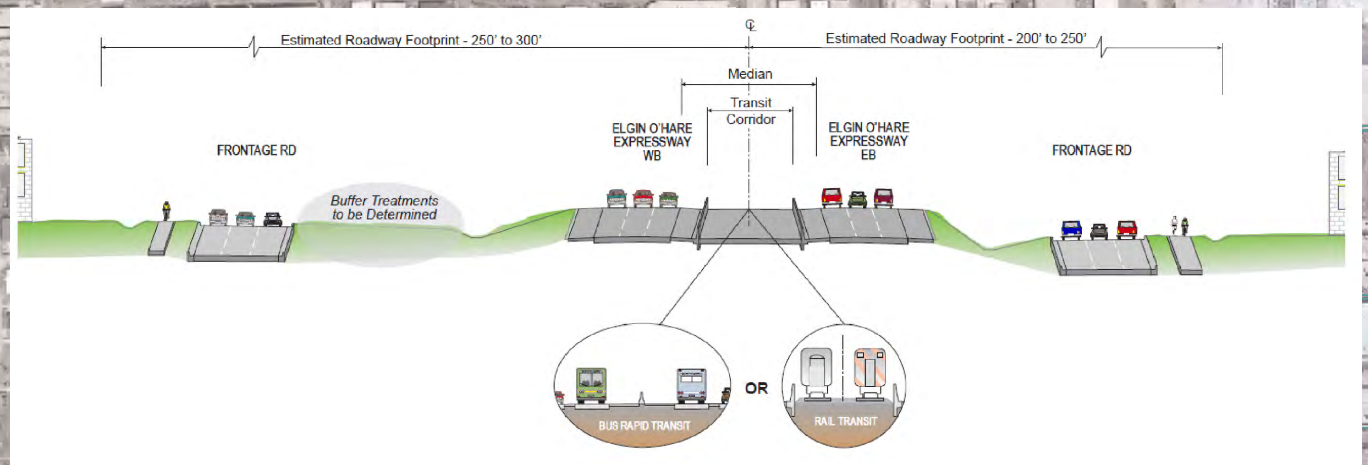
CH2MHILL

MARCH 2009

0 400 800 1200 1600 2000  
FEET



CONCEPTUAL CROSS SECTION **EO-3**  
F-6



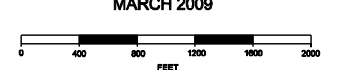
CONCEPTUAL CROSS SECTION **EO-4**  
F-6

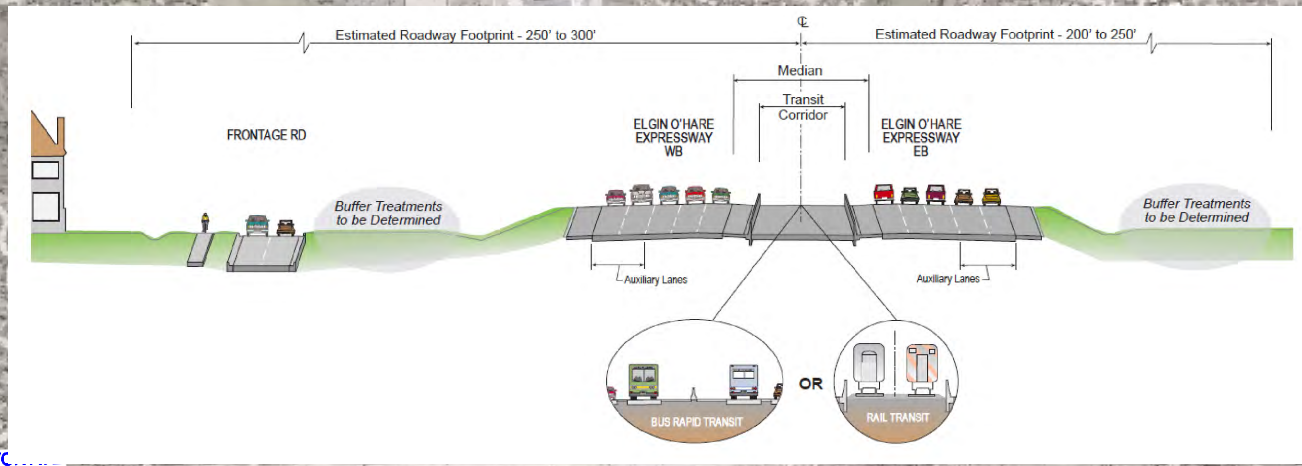
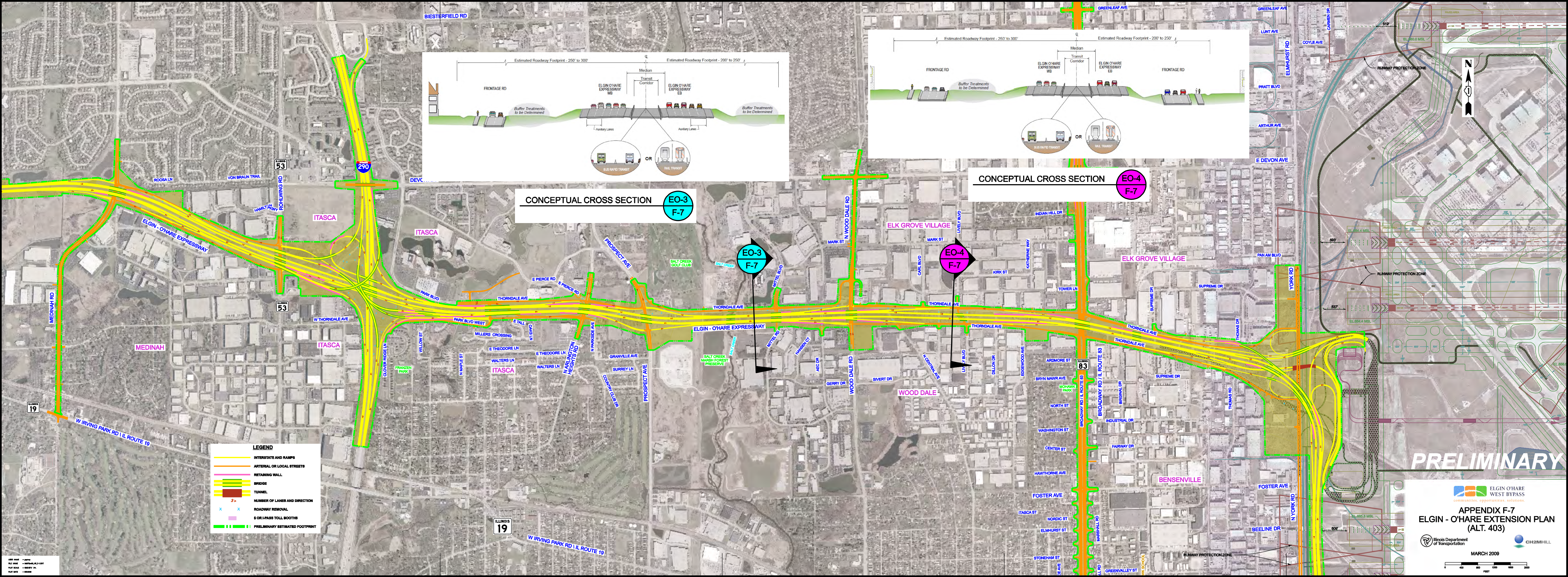
**LEGEND**

- INTERSTATE AND RAMPS
- ARTERIAL OR LOCAL STREETS
- RETAINING WALL
- BRIDGE
- TUNNEL
- ↔ NUMBER OF LANES AND DIRECTION
- x ROADWAY REMOVAL
- § OR I-PASS TOLL BOOTHS
- PRELIMINARY ESTIMATED FOOTPRINT

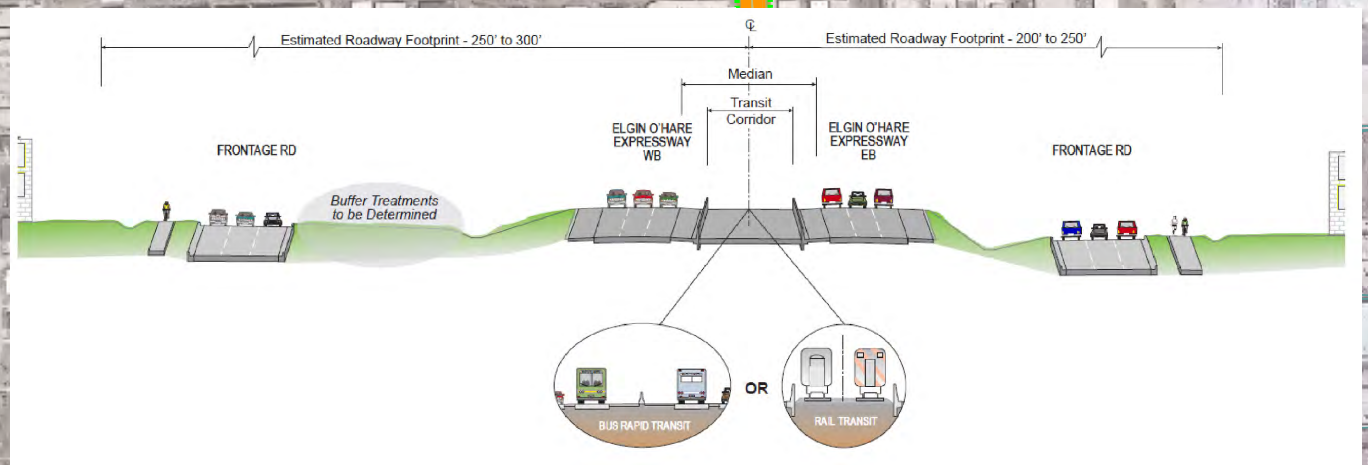
**PRELIMINARY**

**APPENDIX F-6**  
**ELGIN - O'HARE EXTENSION PLAN (ALT. 402)**  
  
 MARCH 2009





CONCEPTUAL CROSS SECTION **EO-3**  
F-7



CONCEPTUAL CROSS SECTION **EO-4**  
F-7

**LEGEND**

- INTERSTATE AND RAMPS
- ARTERIAL OR LOCAL STREETS
- RETAINING WALL
- BRIDGE
- TUNNEL
- NUMBER OF LANES AND DIRECTION
- ROADWAY REMOVAL
- \$ OR I-PASS TOLL BOOTHS
- PRELIMINARY ESTIMATED FOOTPRINT

**PRELIMINARY**

ELGIN O'HARE WEST BYPASS  
communities. opportunities. solutions.

**APPENDIX F-7**  
**ELGIN - O'HARE EXTENSION PLAN**  
(ALT. 403)

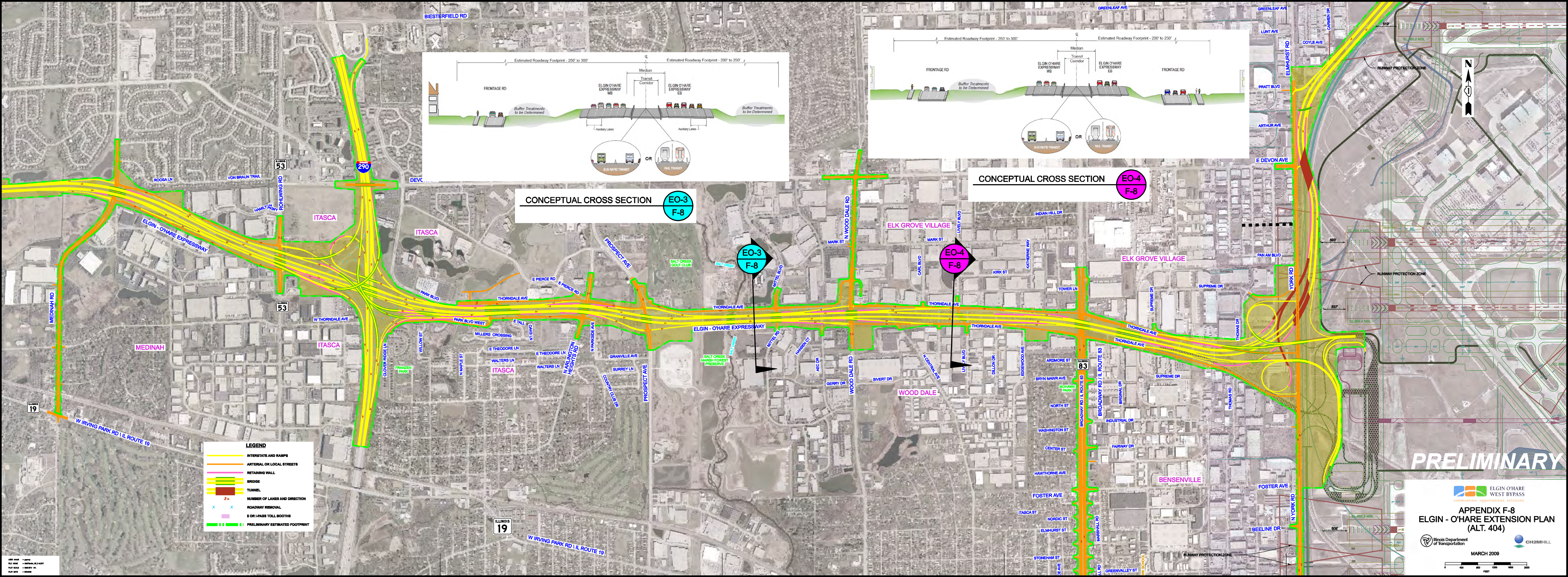
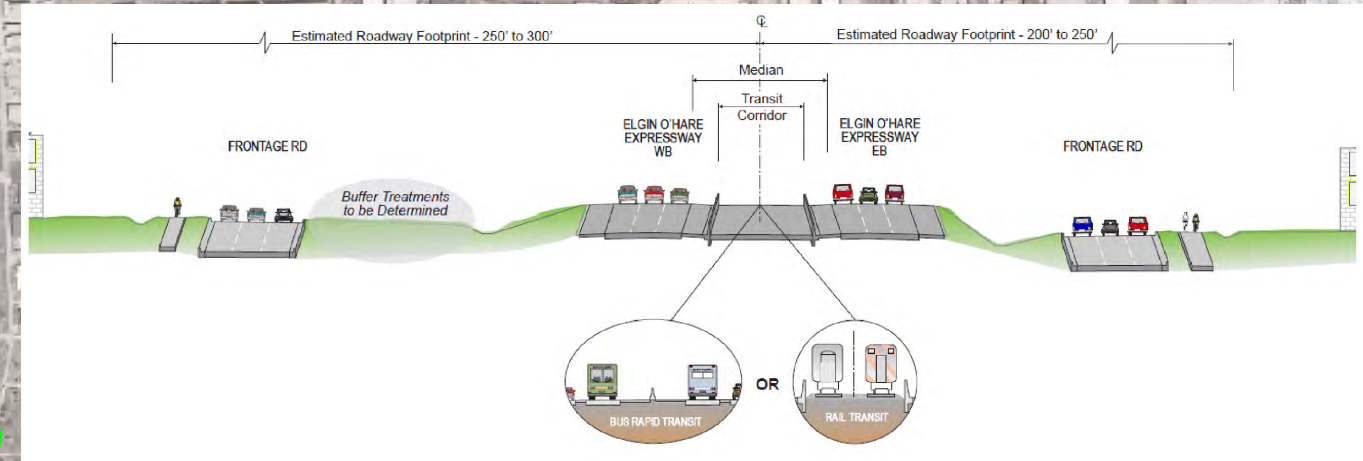
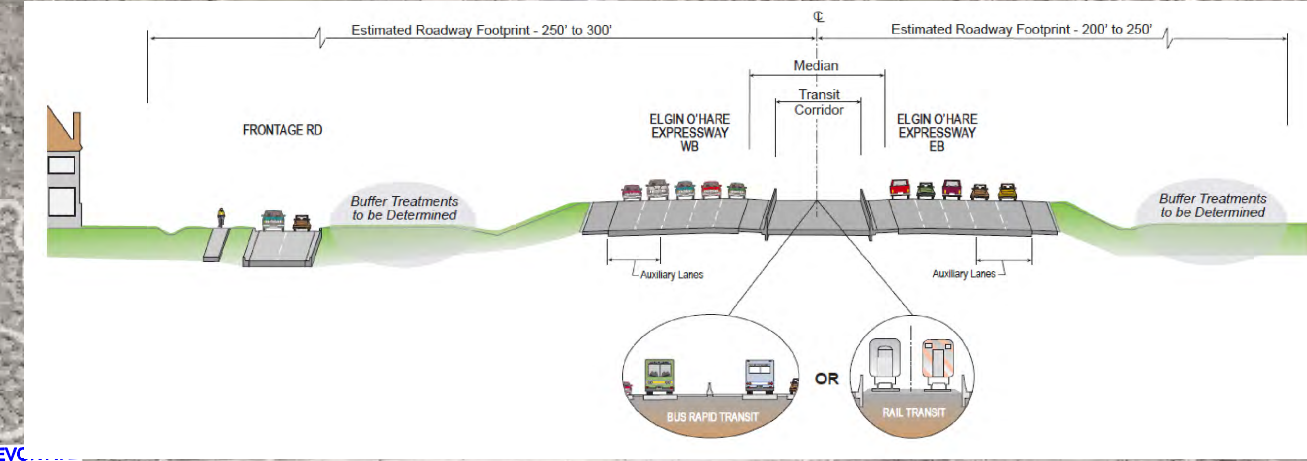
Illinois Department of Transportation

CH2MHILL

MARCH 2009

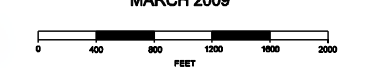
DATE PLOTTED: 3/10/09  
FILE NAME: I-290\_EO-3-F7-090308.dwg  
PLOT SCALE: 1/8"=1'-0"  
PLOT DATE: 3/10/09

- LEGEND**
- INTERSTATE AND RAMPS
  - ARTERIAL OR LOCAL STREETS
  - RETAINING WALL
  - BRIDGE
  - TUNNEL
  - NUMBER OF LANES AND DIRECTION
  - ROADWAY REMOVAL
  - \$ OR I-PASS TOLL BOOTHS
  - PRELIMINARY ESTIMATED FOOTPRINT



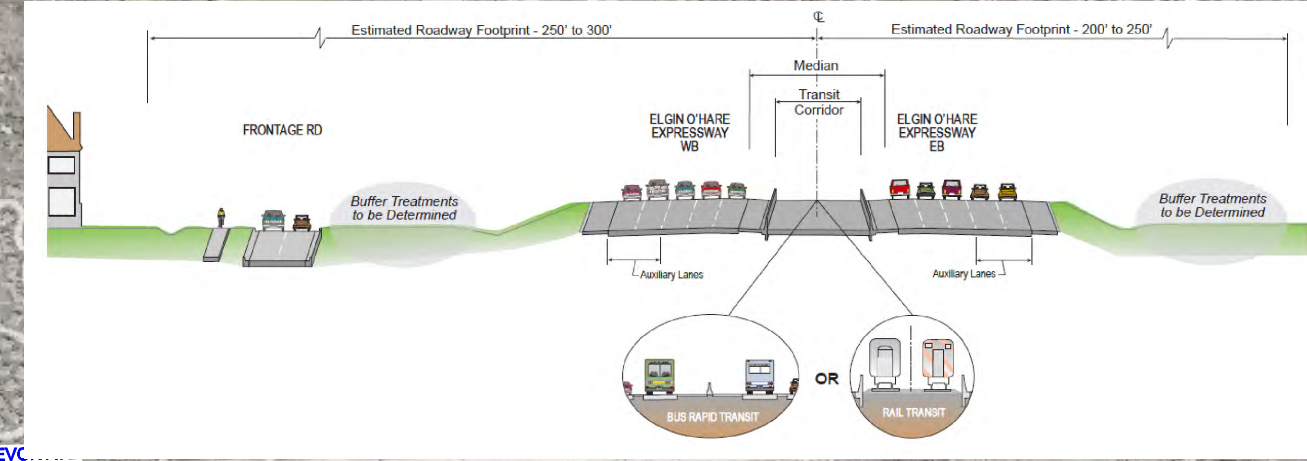
**PRELIMINARY**

ELGIN O'HARE WEST BYPASS  
 communities. opportunities. solutions.  
**APPENDIX F-8**  
**ELGIN - O'HARE EXTENSION PLAN (ALT. 404)**  
 Illinois Department of Transportation  
 CH2MHILL  
 MARCH 2009

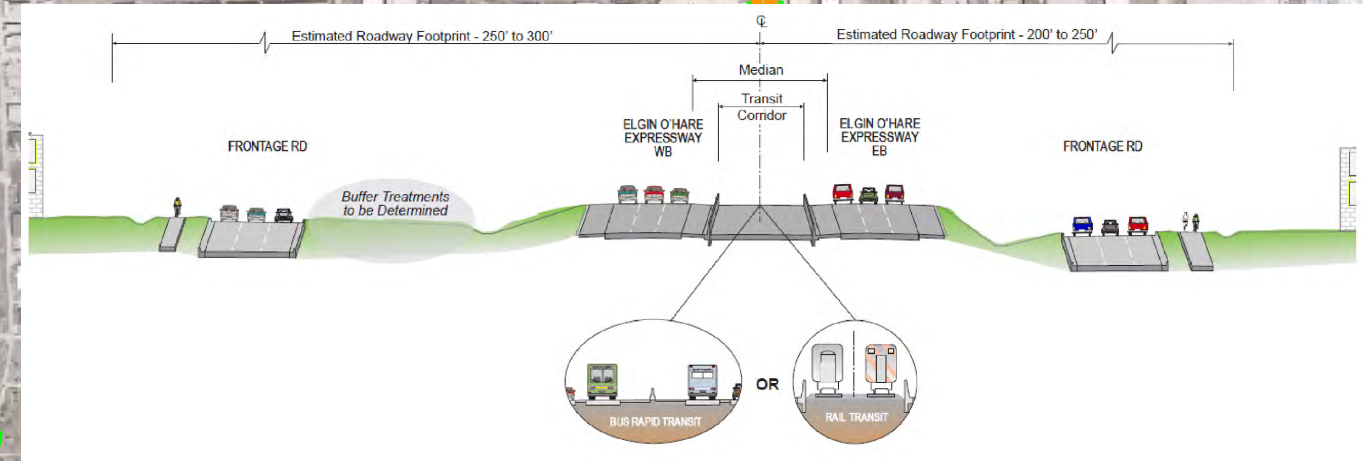




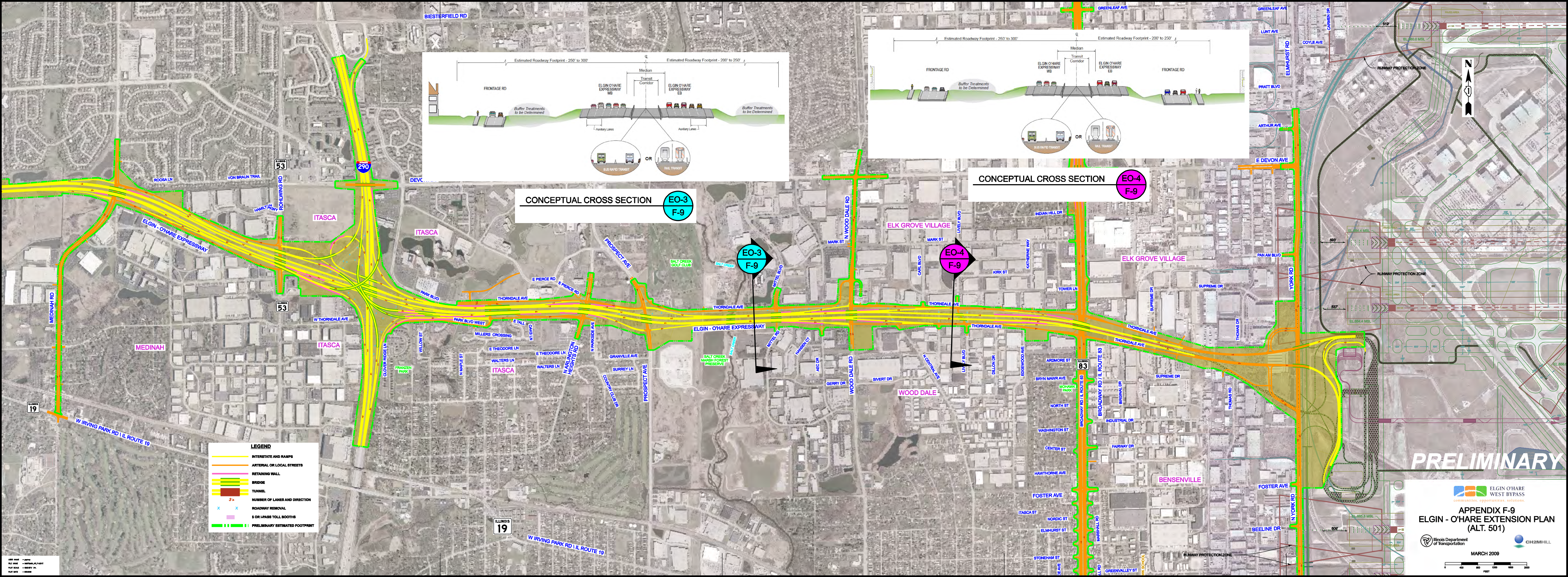
- LEGEND**
- INTERSTATE AND RAMPS
  - ARTERIAL OR LOCAL STREETS
  - RETAINING WALL
  - BRIDGE
  - TUNNEL
  - NUMBER OF LANES AND DIRECTION
  - ROADWAY REMOVAL
  - S OR I-PASS TOLL BOOTHS
  - PRELIMINARY ESTIMATED FOOTPRINT



**CONCEPTUAL CROSS SECTION** EO-3  
F-9



**CONCEPTUAL CROSS SECTION** EO-4  
F-9



**PRELIMINARY**

**ELGIN O'HARE WEST BYPASS**  
communities. opportunities. solutions.

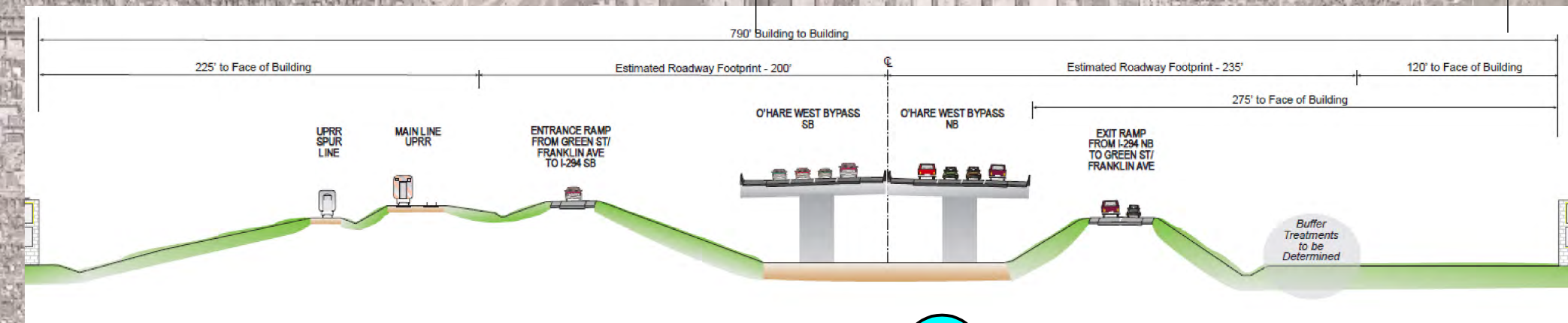
**APPENDIX F-9**  
**ELGIN - O'HARE EXTENSION PLAN**  
(ALT. 501)

Illinois Department of Transportation

CH2MHILL

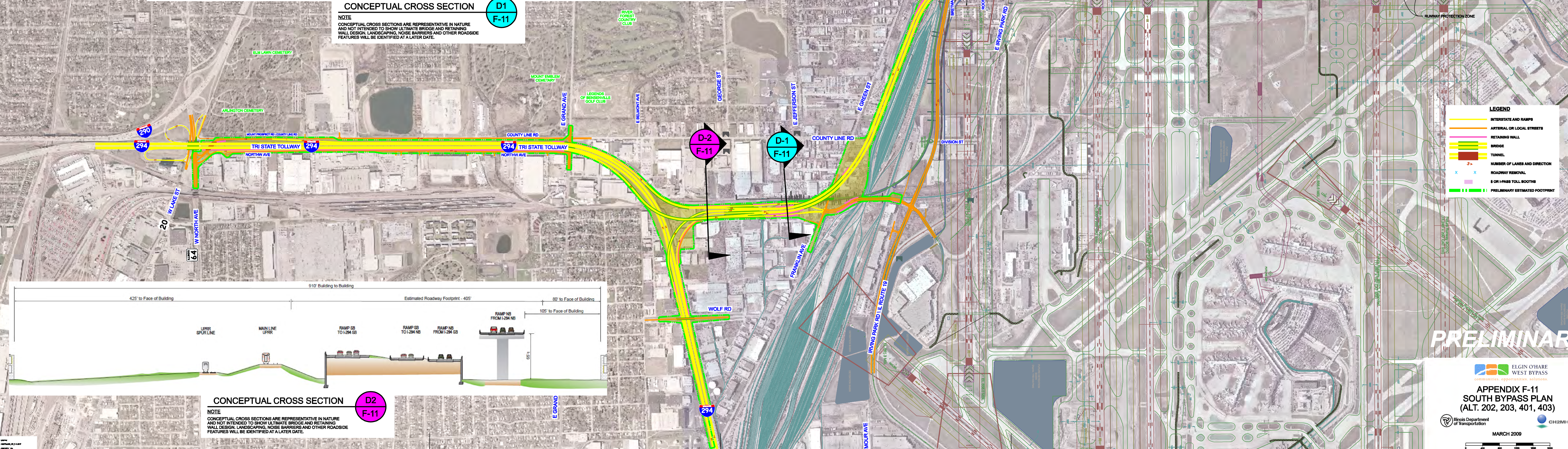
MARCH 2009





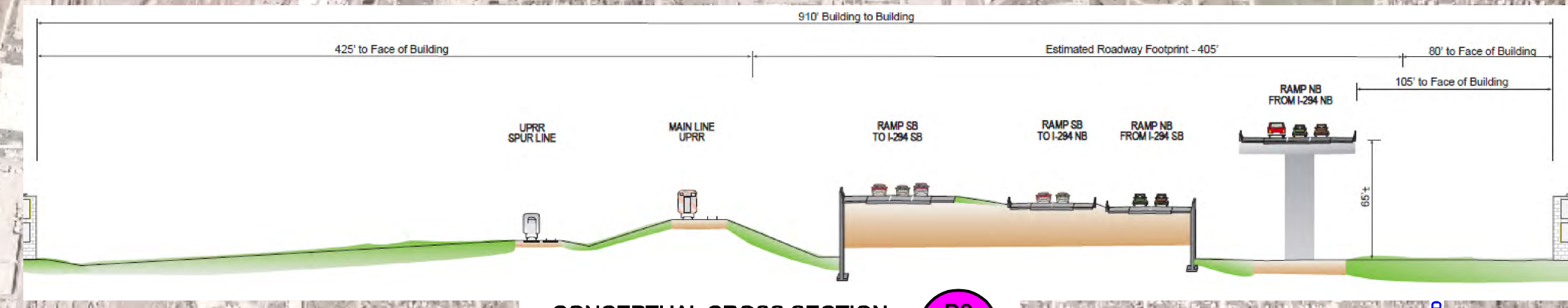
**CONCEPTUAL CROSS SECTION** **D1**  
**F-11**

**NOTE**  
CONCEPTUAL CROSS SECTIONS ARE REPRESENTATIVE IN NATURE AND NOT INTENDED TO SHOW ULTIMATE BRIDGE AND RETAINING WALL DESIGN, LANDSCAPING, NOISE BARRIERS AND OTHER ROADSIDE FEATURES WILL BE IDENTIFIED AT A LATER DATE.



**LEGEND**

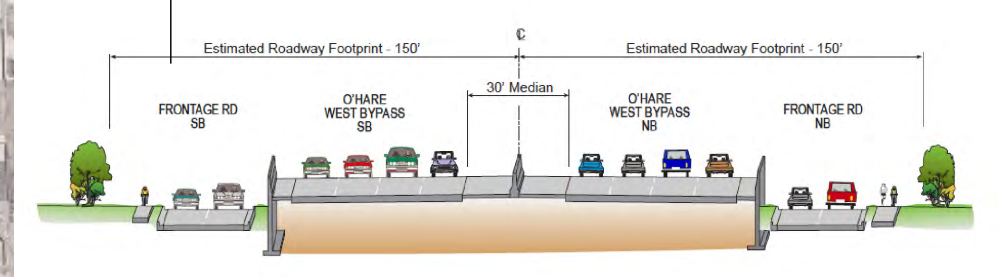
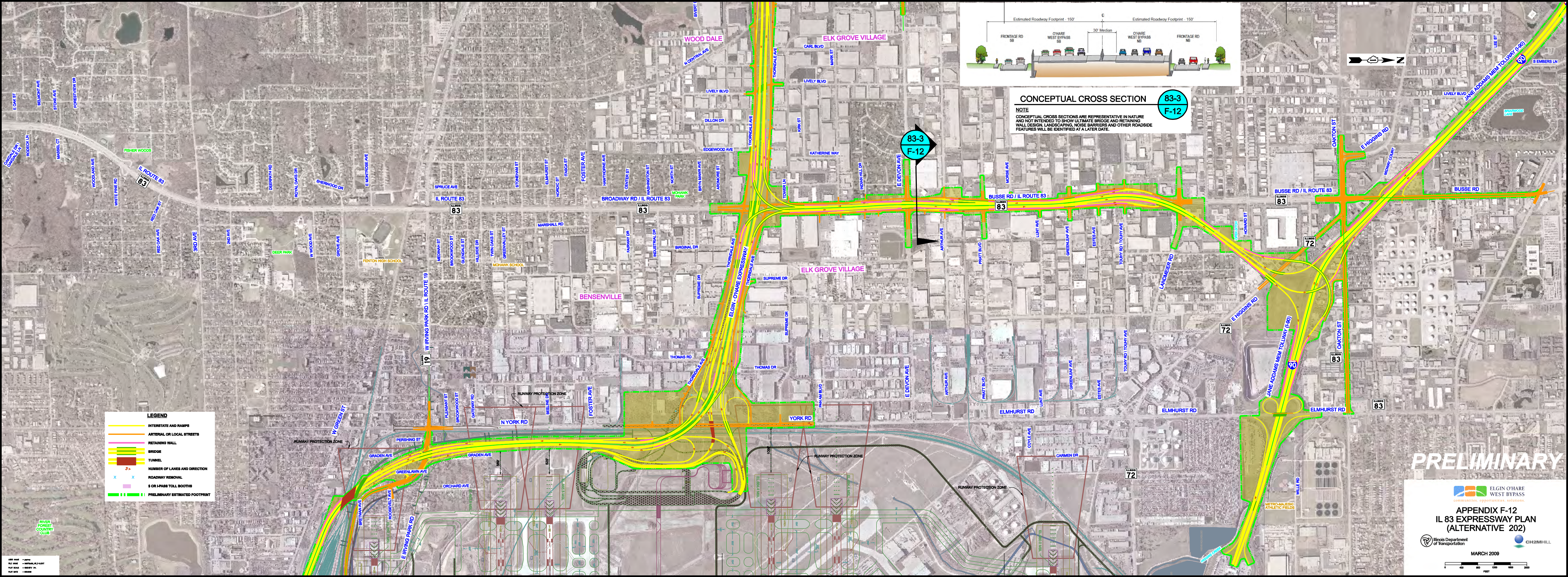
- INTERSTATE AND RAMP
- ARTERIAL OR LOCAL STREETS
- RETAINING WALL
- BRIDGE
- TUNNEL
- NUMBER OF LANES AND DIRECTION
- ROADWAY REMOVAL
- \$ OR I-PASS TOLL BOOTHS
- PRELIMINARY ESTIMATED FOOTPRINT



**CONCEPTUAL CROSS SECTION** **D2**  
**F-11**

**NOTE**  
CONCEPTUAL CROSS SECTIONS ARE REPRESENTATIVE IN NATURE AND NOT INTENDED TO SHOW ULTIMATE BRIDGE AND RETAINING WALL DESIGN, LANDSCAPING, NOISE BARRIERS AND OTHER ROADSIDE FEATURES WILL BE IDENTIFIED AT A LATER DATE.

**PRELIMINARY**



**CONCEPTUAL CROSS SECTION** **83-3**  
**F-12**

**NOTE**  
CONCEPTUAL CROSS SECTIONS ARE REPRESENTATIVE IN NATURE AND NOT INTENDED TO SHOW ULTIMATE BRIDGE AND RETAINING WALL DESIGN, LANDSCAPING, NOISE BARRIERS AND OTHER ROADSIDE FEATURES WILL BE IDENTIFIED AT A LATER DATE.

- LEGEND**
- INTERSTATE AND RAMPS
  - ARTERIAL OR LOCAL STREETS
  - RETAINING WALL
  - BRIDGE
  - TUNNEL
  - NUMBER OF LANES AND DIRECTION
  - x ROADWAY REMOVAL
  - x \$ OR I-PASS TOLL BOOTHS
  - PRELIMINARY ESTIMATED FOOTPRINT

**PRELIMINARY**

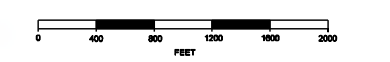
**ELGIN O'HARE WEST BYPASS**  
 communities. opportunities. solutions.

**APPENDIX F-12**  
**IL 83 EXPRESSWAY PLAN**  
**(ALTERNATIVE 202)**

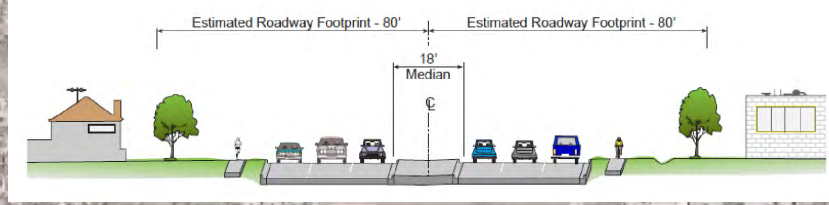
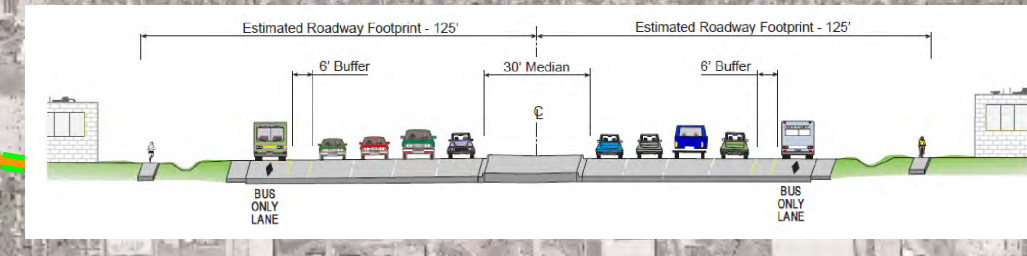
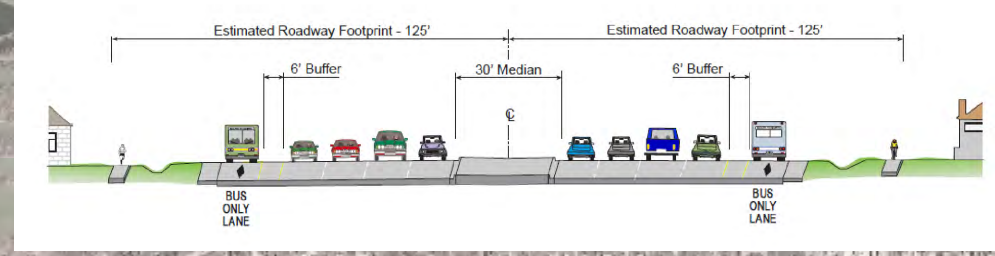
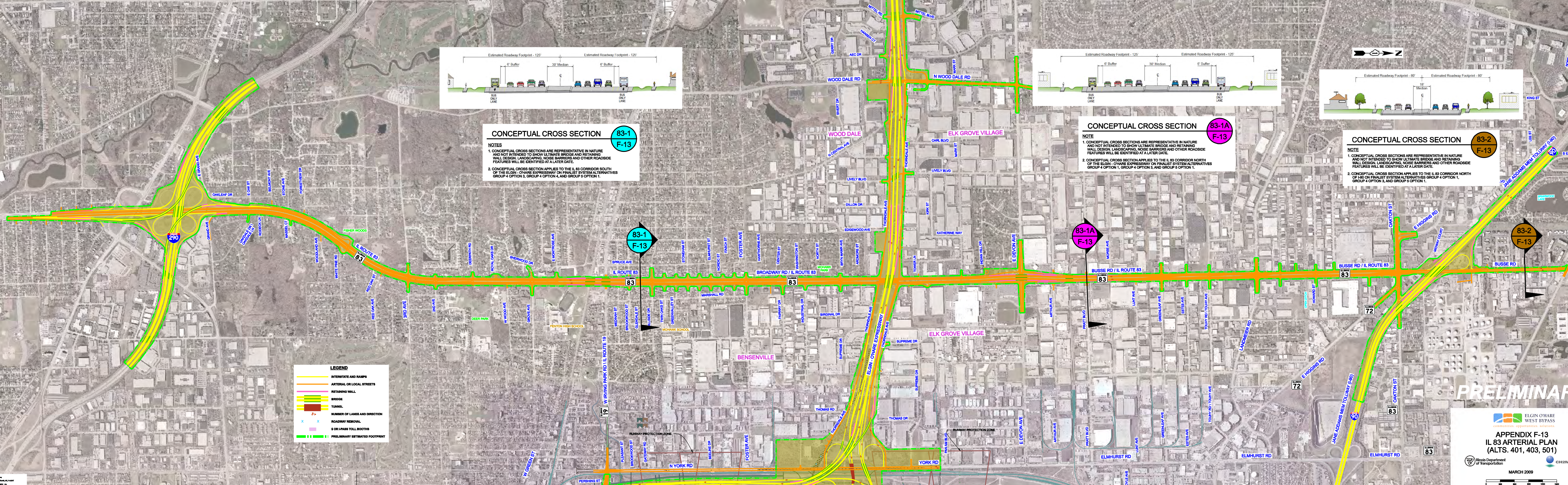
Illinois Department of Transportation

CH2M HILL

MARCH 2009



DATE PLOTTED: 3/10/09  
 FILE NAME: I83\_EXPRESSWAY\_PLAN\_202.dwg  
 PLOT SCALE: 1/8" = 1'-0"  
 PLOT DATE: 3/10/09



**CONCEPTUAL CROSS SECTION 83-1 F-13**

**NOTES**

1. CONCEPTUAL CROSS SECTIONS ARE REPRESENTATIVE IN NATURE AND NOT INTENDED TO SHOW ULTIMATE BRIDGE AND RETAINING WALL DESIGN, LANDSCAPING, NOISE BARRIERS AND OTHER ROADSIDE FEATURES WILL BE IDENTIFIED AT A LATER DATE.
2. CONCEPTUAL CROSS SECTION APPLIES TO THE IL 83 CORRIDOR SOUTH OF THE ELGIN - O'HARE EXPRESSWAY ON FINALIST SYSTEM ALTERNATIVES GROUP 4 OPTION 3, GROUP 4 OPTION 4, AND GROUP 5 OPTION 1.

**CONCEPTUAL CROSS SECTION 83-1A F-13**

**NOTE**

1. CONCEPTUAL CROSS SECTIONS ARE REPRESENTATIVE IN NATURE AND NOT INTENDED TO SHOW ULTIMATE BRIDGE AND RETAINING WALL DESIGN, LANDSCAPING, NOISE BARRIERS AND OTHER ROADSIDE FEATURES WILL BE IDENTIFIED AT A LATER DATE.
2. CONCEPTUAL CROSS SECTION APPLIES TO THE IL 83 CORRIDOR NORTH OF THE ELGIN - O'HARE EXPRESSWAY ON FINALIST SYSTEM ALTERNATIVES GROUP 4 OPTION 1, GROUP 4 OPTION 3, AND GROUP 5 OPTION 1.

**CONCEPTUAL CROSS SECTION 83-2 F-13**

**NOTE**

1. CONCEPTUAL CROSS SECTIONS ARE REPRESENTATIVE IN NATURE AND NOT INTENDED TO SHOW ULTIMATE BRIDGE AND RETAINING WALL DESIGN, LANDSCAPING, NOISE BARRIERS AND OTHER ROADSIDE FEATURES WILL BE IDENTIFIED AT A LATER DATE.
2. CONCEPTUAL CROSS SECTION APPLIES TO THE IL 83 CORRIDOR NORTH OF I-80 ON FINALIST SYSTEM ALTERNATIVES GROUP 4 OPTION 1, GROUP 4 OPTION 3, AND GROUP 5 OPTION 1.

**LEGEND**

- INTERSTATE AND RAMP
- ARTERIAL OR LOCAL STREETS
- RETAINING WALL
- BRIDGE
- TUNNEL
- NUMBER OF LANES AND DIRECTION
- ROADWAY REMOVAL
- § OR I-PASS TOLL BOOTHS
- PRELIMINARY ESTIMATED FOOTPRINT

**PRELIMINARY**

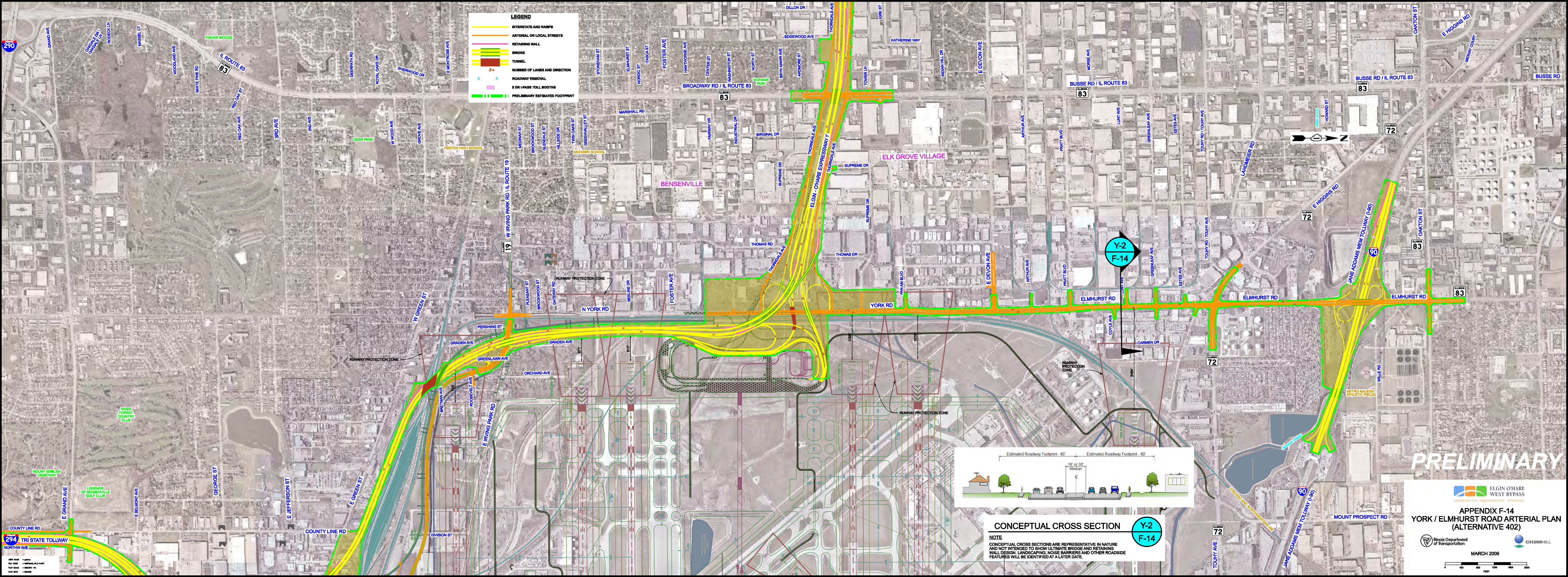
ELGIN O'HARE WEST BYPASS  
communities, opportunities, solutions.

**APPENDIX F-13  
IL 83 ARTERIAL PLAN  
(ALTS. 401, 403, 501)**

Illinois Department of Transportation

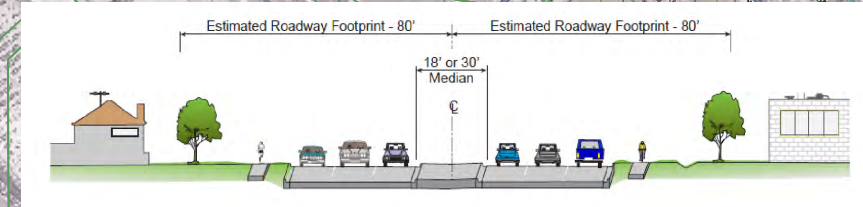
MARCH 2009

0 300 600 900 1200 1500  
FEET



**LEGEND**

- INTERSTATE AND RAMP
- ARTERIAL OR LOCAL STREET
- RETAINING WALL
- BRIDGE
- TUNNEL
- NUMBER OF LANES AND DIRECTION
- ROADWAY REMOVAL
- 3 OR I-PASS TOLL BOOTHS
- PRELIMINARY ESTIMATED FOOTPRINT



**CONCEPTUAL CROSS SECTION** Y-2  
F-14

**NOTE**  
CONCEPTUAL CROSS SECTIONS ARE REPRESENTATIVE IN NATURE AND NOT INTENDED TO SHOW ULTIMATE BRIDGE AND RETAINING WALL DESIGN, LANDSCAPING, NOISE BARRIERS AND OTHER ROADSIDE FEATURES WILL BE IDENTIFIED AT A LATER DATE.

**PRELIMINARY**



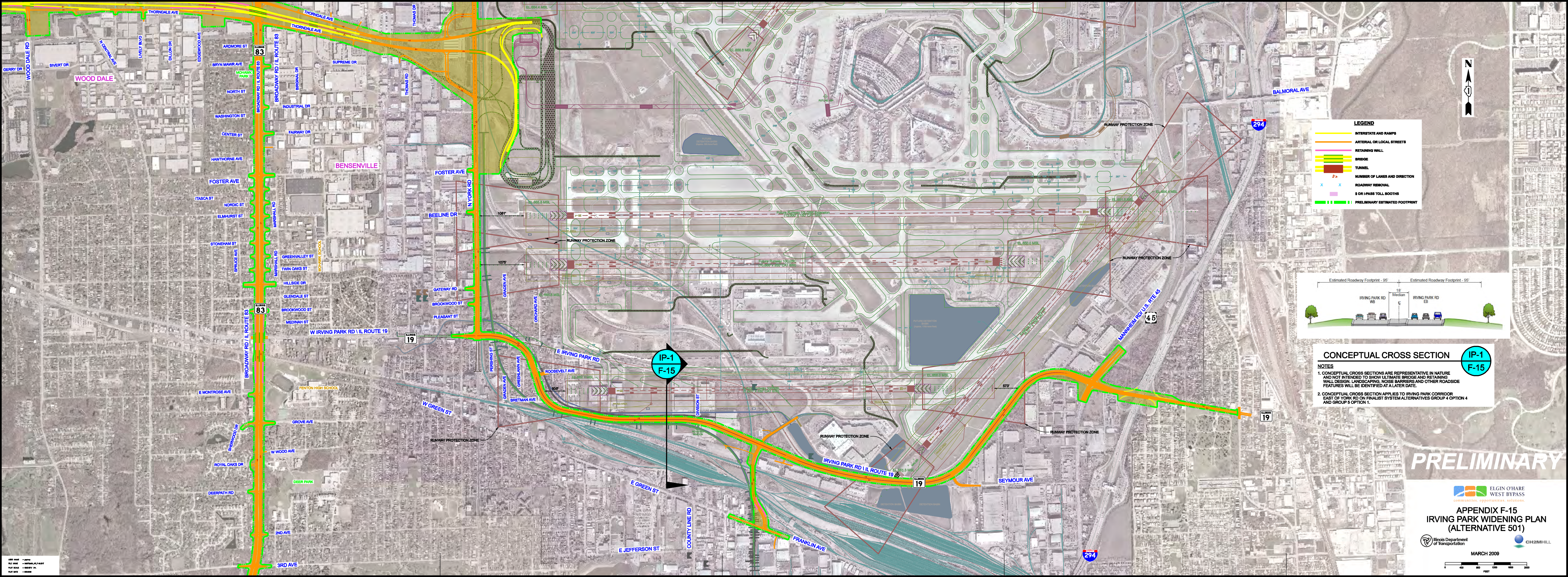
**APPENDIX F-14**  
**YORK / ELMHURST ROAD ARTERIAL PLAN**  
**(ALTERNATIVE 402)**



MARCH 2009

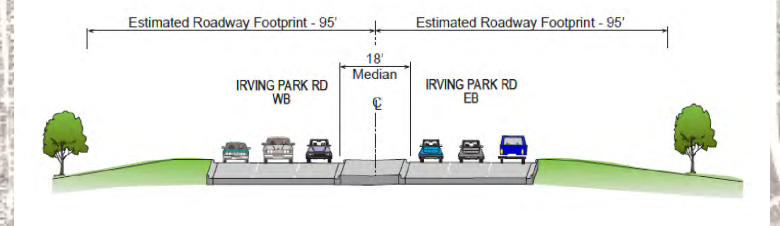


294 TRI STATE TOLLWAY  
NORTHW AVE



**LEGEND**

- INTERSTATE AND RAMPS
- ARTERIAL OR LOCAL STREETS
- RETAINING WALL
- BRIDGE
- TUNNEL
- ➔ NUMBER OF LANES AND DIRECTION
- ✕ ROADWAY REMOVAL
- \$ OR I-PASS TOLL BOOTHS
- PRELIMINARY ESTIMATED FOOTPRINT



**CONCEPTUAL CROSS SECTION** IP-1  
F-15

**NOTES**

- CONCEPTUAL CROSS SECTIONS ARE REPRESENTATIVE IN NATURE AND NOT INTENDED TO SHOW ULTIMATE BRIDGE AND RETAINING WALL DESIGN, LANDSCAPING, NOISE BARRIERS AND OTHER ROADSIDE FEATURES WILL BE IDENTIFIED AT A LATER DATE.
- CONCEPTUAL CROSS SECTION APPLIES TO IRVING PARK CORRIDOR EAST OF YORK RD ON FINALIST SYSTEM ALTERNATIVES GROUP 4 OPTION 4 AND GROUP 5 OPTION 1.

**PRELIMINARY**



DATE: 03/09  
 FILE NAME: IPRWIDENING\_03/09.rvt  
 PLOT SCALE: 1/8" = 1'-0"  
 PLOT DATE: 03/09