






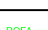





LEGEND

-  POINT LOCATION
-  PROPOSED ROADWAY
-  500' RUNWAY SAFETY AREA
-  214' TAXIWAY SAFETY AREA
-  RUNWAY PROTECTION ZONE (EXISTING)
-  RUNWAY PROTECTION ZONE (FUTURE)
-  TAXIWAY OBJECT FREE AREA
-  RUNWAY OBJECT FREE AREA
-  DENOTES TUNNEL OPTION FOR WEST BYPASS / UNION PACIFIC RAILROAD GRADE SEPARATION



FILE NAME = DIEOWB-sh1-7460-09.dgn

USER NAME = asontag
 PLOT SCALE = 400.0000' / in.
 PLOT DATE = 6/28/2011

DESIGNED -
 DRAWN -
 CHECKED -
 DATE -

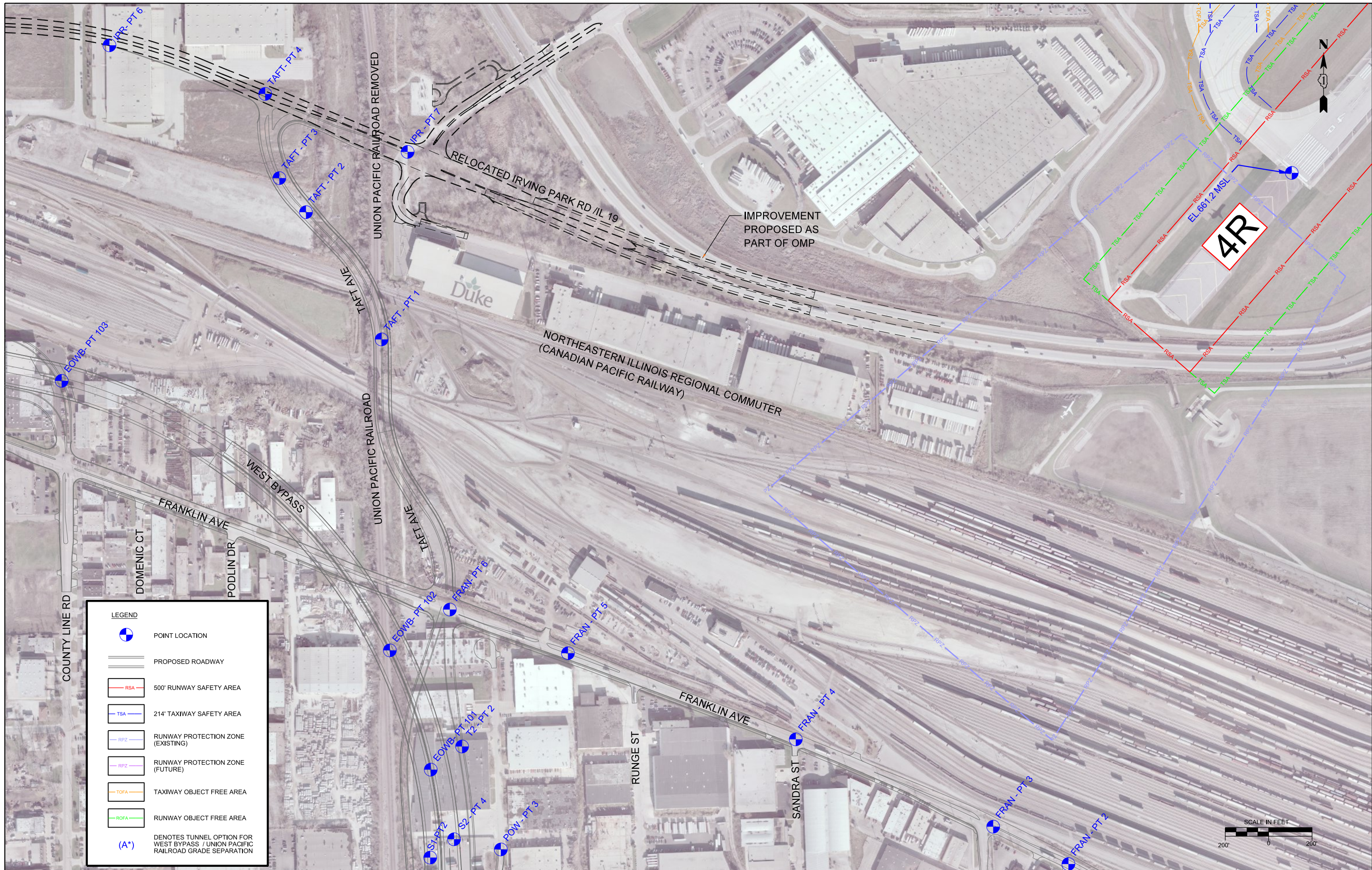
REVISED -
 REVISED -
 REVISED -
 REVISED -

ELGIN O'HARE WEST BYPASS
 communities. opportunities. solutions.

FAA FORM 7460 PLAN

SCALE: SHEET NO. 10 OF 39 SHEETS STA. TO STA.

| F.A. RTE. | SECTION | COUNTY | TOTAL SHEETS | SHEET NO. |
|--------------|---------|--------|---------------------------|-----------|
| | | | 39 | 10 |
| CONTRACT NO. | | | ILLINOIS FED. AID PROJECT | |



LEGEND

- POINT LOCATION
- PROPOSED ROADWAY
- 500' RUNWAY SAFETY AREA
- 214' TAXIWAY SAFETY AREA
- RUNWAY PROTECTION ZONE (EXISTING)
- RUNWAY PROTECTION ZONE (FUTURE)
- TAXIWAY OBJECT FREE AREA
- RUNWAY OBJECT FREE AREA
- DENOTES TUNNEL OPTION FOR WEST BYPASS / UNION PACIFIC RAILROAD GRADE SEPARATION

FILE NAME = DIEOWB-shr-7460-10.dgn

USER NAME = asontag
 PLOT SCALE = 400.0000' / in.
 PLOT DATE = 6/28/2011

DESIGNED -
 DRAWN -
 CHECKED -
 DATE -

REVISED -
 REVISED -
 REVISED -
 REVISED -

ELGIN O'HARE WEST BYPASS
 communities. opportunities. solutions.

FAA FORM 7460 PLAN
 SCALE: SHEET NO. 11 OF 39 SHEETS STA. TO STA.

| F.A. RTE. | SECTION | COUNTY | TOTAL SHEETS | SHEET NO. |
|---------------------------|---------|--------|--------------|-----------|
| | | | 39 | 11 |
| CONTRACT NO. | | | | |
| ILLINOIS FED. AID PROJECT | | | | |



| LEGEND | |
|--------|---|
| | POINT LOCATION |
| | PROPOSED ROADWAY |
| | 500' RUNWAY SAFETY AREA |
| | 214' TAXIWAY SAFETY AREA |
| | RUNWAY PROTECTION ZONE (EXISTING) |
| | RUNWAY PROTECTION ZONE (FUTURE) |
| | TAXIWAY OBJECT FREE AREA |
| | RUNWAY OBJECT FREE AREA |
| | DENOTES TUNNEL OPTION FOR WEST BYPASS / UNION PACIFIC RAILROAD GRADE SEPARATION |

FILE NAME = DIEOWB-sh-t-7460-11.dgn

USER NAME = asontag
 PLOT SCALE = 400.0000' / 1" = 400:1
 PLOT DATE = 6/28/2011

DESIGNED -
 DRAWN -
 CHECKED -
 DATE -

REVISED -
 REVISED -
 REVISED -
 REVISED -


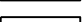
ELGIN O'HARE WEST BYPASS
 communities. opportunities. solutions.

FAA FORM 7460 PLAN
 SCALE: SHEET NO. 12 OF 39 SHEETS STA. TO STA.

| F.A. RTE. | SECTION | COUNTY | TOTAL SHEETS | SHEET NO. |
|---------------------------|---------|--------|--------------|-----------|
| | | | 39 | 12 |
| CONTRACT NO. | | | | |
| ILLINOIS FED. AID PROJECT | | | | |



LEGEND

-  POINT LOCATION
-  PROPOSED ROADWAY
-  500' RUNWAY SAFETY AREA
-  214' TAXIWAY SAFETY AREA
-  RUNWAY PROTECTION ZONE (EXISTING)
-  RUNWAY PROTECTION ZONE (FUTURE)
-  TAXIWAY OBJECT FREE AREA
-  RUNWAY OBJECT FREE AREA
-  DENOTES TUNNEL OPTION FOR WEST BYPASS / UNION PACIFIC RAILROAD GRADE SEPARATION

FILE NAME = DIEOWB-sht-7460-12.dgn

USER NAME = asontag
 PLOT SCALE = 400.0000' / 1" =
 PLOT DATE = 6/28/2011

DESIGNED -
 DRAWN -
 CHECKED -
 DATE -

REVISED -
 REVISED -
 REVISED -
 REVISED -

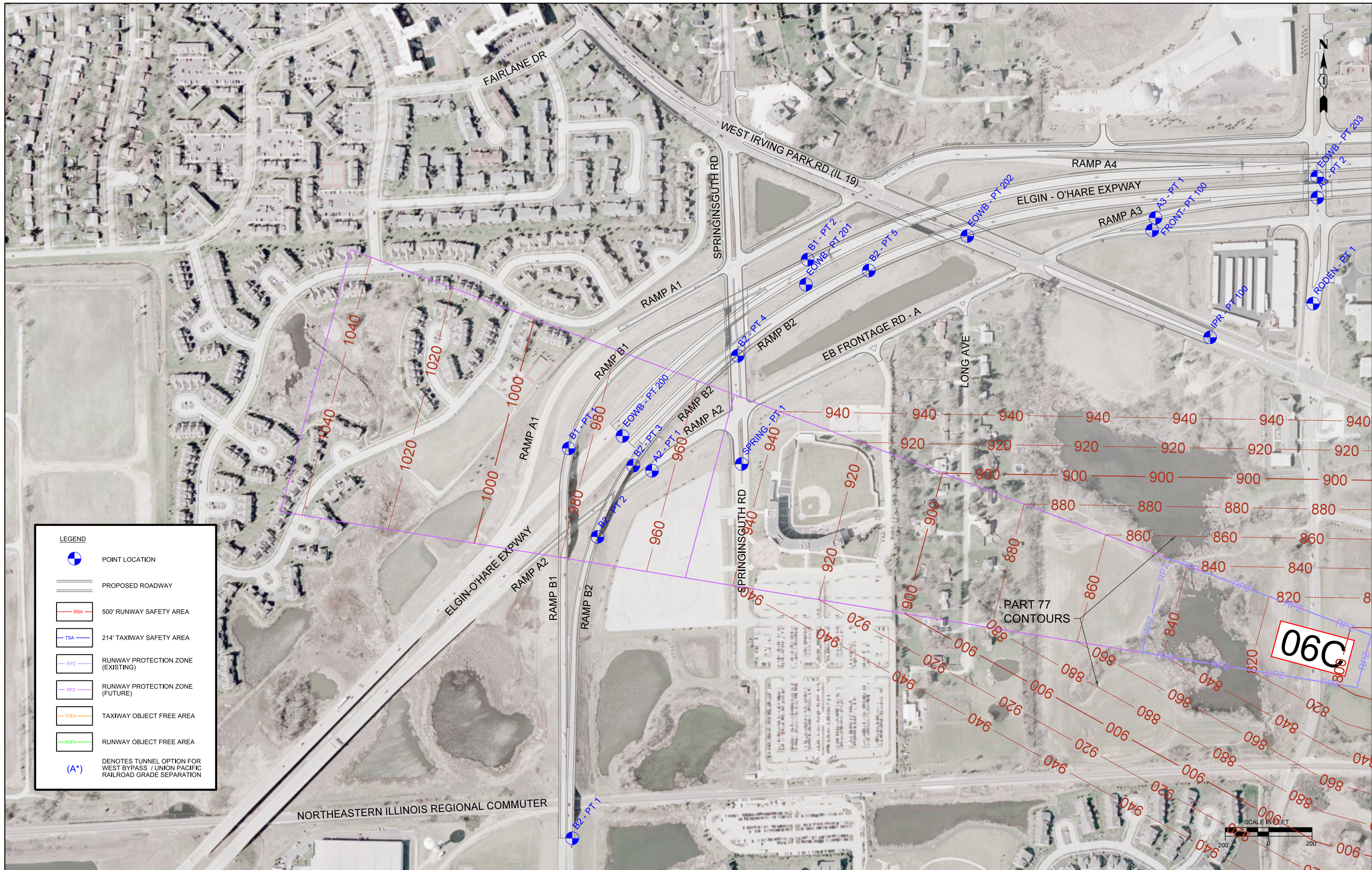


ELGIN O'HARE WEST BYPASS
 communities. opportunities. solutions.

FAA FORM 7460 PLAN

SCALE: SHEET NO. 13 OF 39 SHEETS STA. TO STA.

| F.A. RTE. | SECTION | COUNTY | TOTAL SHEETS | SHEET NO. |
|---------------------------|---------|--------|--------------|-----------|
| | | | 39 | 13 |
| CONTRACT NO. | | | | |
| ILLINOIS FED. AID PROJECT | | | | |



LEGEND

- POINT LOCATION
- PROPOSED ROADWAY
- 500' RUNWAY SAFETY AREA
- 214' TAXIWAY SAFETY AREA
- RUNWAY PROTECTION ZONE (EXISTING)
- RUNWAY PROTECTION ZONE (FUTURE)
- TAXIWAY OBJECT FREE AREA
- RUNWAY OBJECT FREE AREA
- DENOTES TUNNEL OPTION FOR WEST BYPASS / UNION PACIFIC RAILROAD GRADE SEPARATION

06C

FILE NAME = DIEOWB-sh1-7460-13.dgn

USER NAME = asontag
 PLOT SCALE = 400.0000' / in.
 PLOT DATE = 6/28/2011

DESIGNED -
 DRAWN -
 CHECKED -
 DATE -

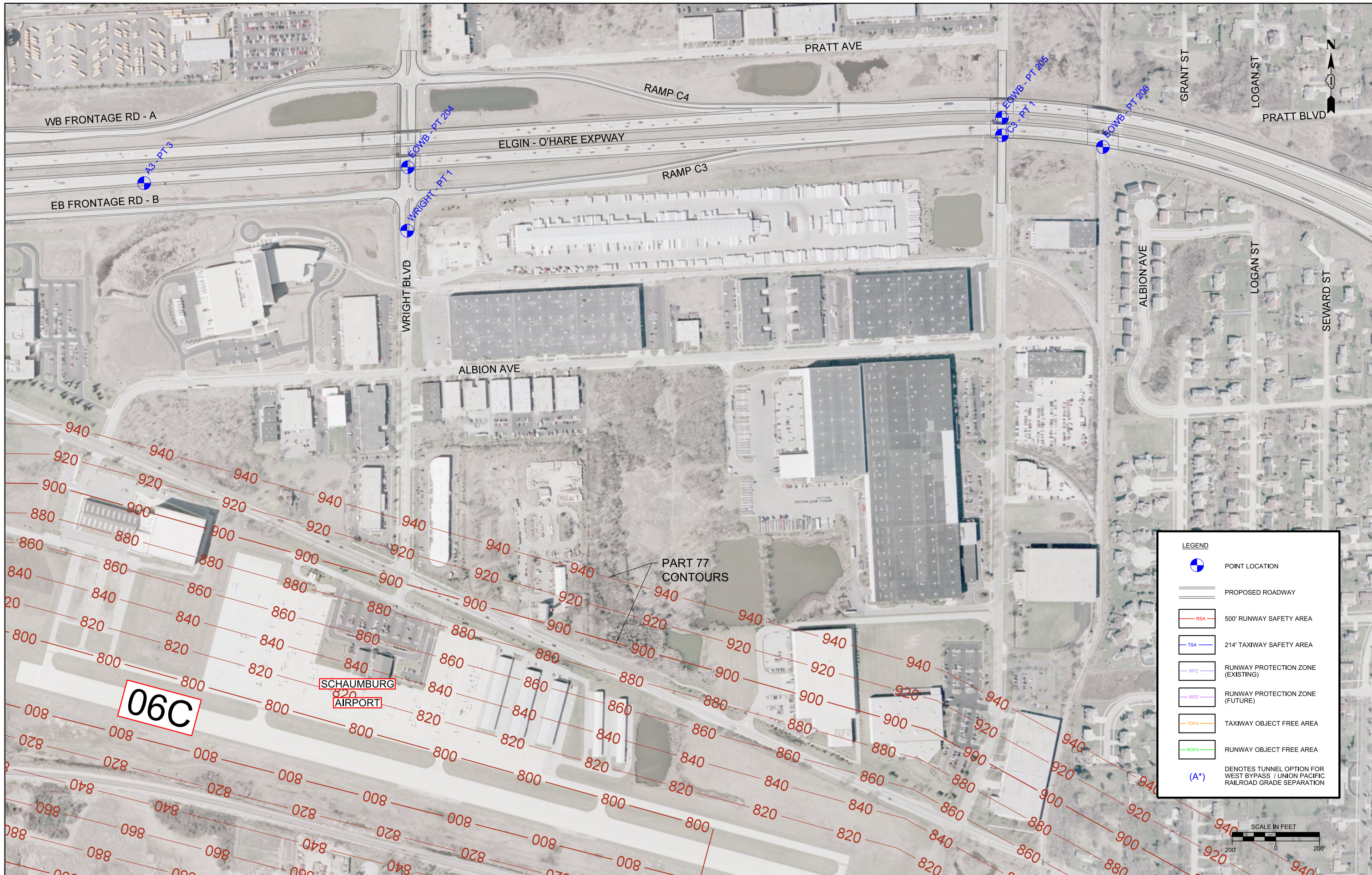
REVISED -
 REVISED -
 REVISED -
 REVISED -

ELGIN O'HARE WEST BYPASS
 communities. opportunities. solutions.

FAA FORM 7460 PLAN

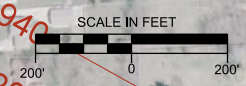
SCALE: SHEET NO. 14 OF 39 SHEETS STA. TO STA.

| F.A. RTE. | SECTION | COUNTY | TOTAL SHEETS | SHEET NO. |
|---------------------------|---------|--------|--------------|-----------|
| | | | 39 | 14 |
| CONTRACT NO. | | | | |
| ILLINOIS FED. AID PROJECT | | | | |



LEGEND

- POINT LOCATION
- PROPOSED ROADWAY
- 500' RUNWAY SAFETY AREA
- 214' TAXIWAY SAFETY AREA
- RUNWAY PROTECTION ZONE (EXISTING)
- RUNWAY PROTECTION ZONE (FUTURE)
- TAXIWAY OBJECT FREE AREA
- RUNWAY OBJECT FREE AREA
- DENOTES TUNNEL OPTION FOR WEST BYPASS / UNION PACIFIC RAILROAD GRADE SEPARATION



FILE NAME = DIEOWB-shr-7460-14.dgn

USER NAME = asontag
 PLOT SCALE = 400.0000' / 1" = 1" = 400'
 PLOT DATE = 6/28/2011

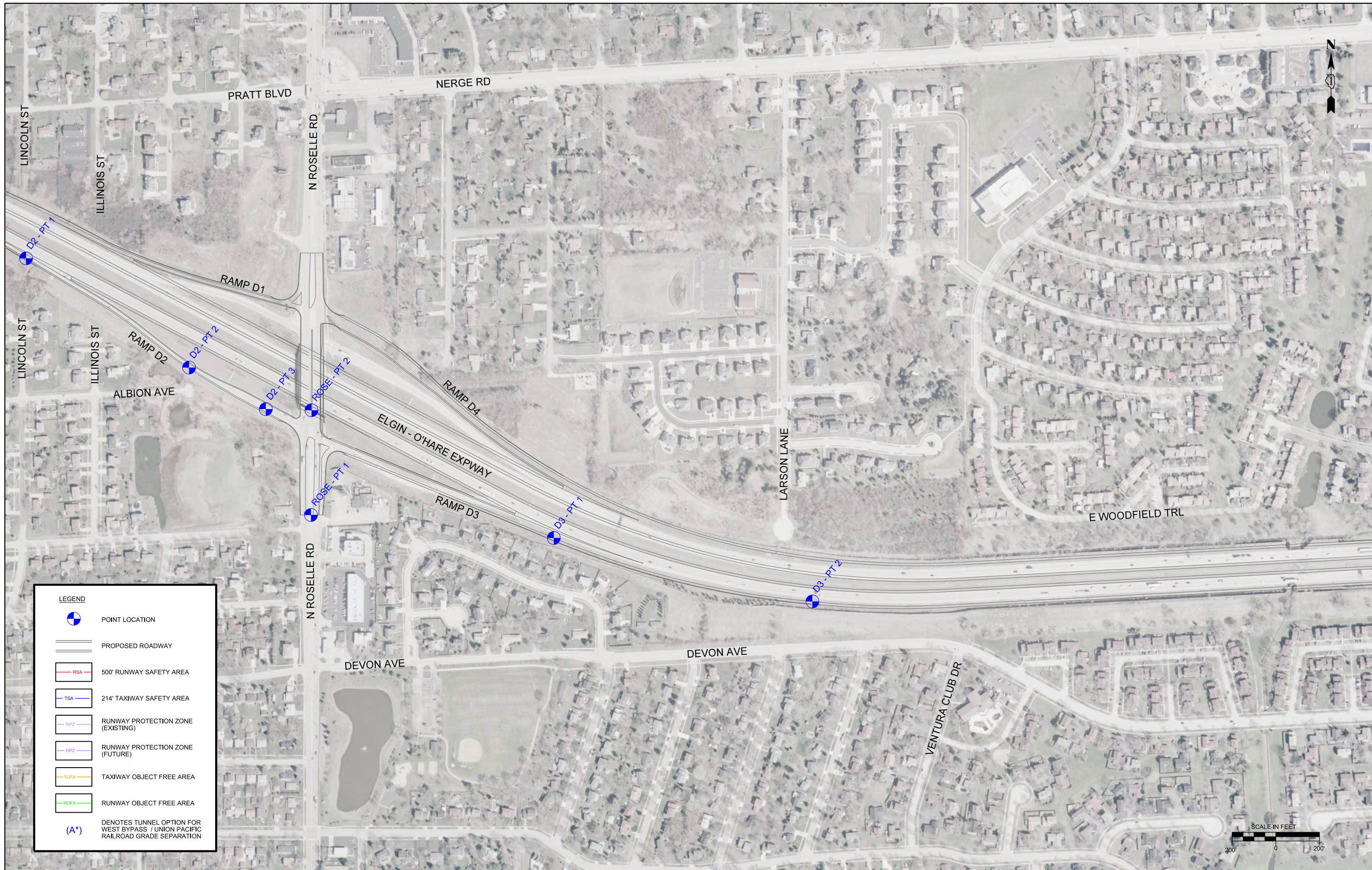
DESIGNED -
 DRAWN -
 CHECKED -
 DATE -

REVISED -
 REVISED -
 REVISED -
 REVISED -



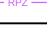
ELGIN O'HARE WEST BYPASS
 communities. opportunities. solutions.

FAA FORM 7460 PLAN
 SCALE: SHEET NO. 15 OF 39 SHEETS STA. TO STA.

| F.A. RTE. | SECTION | COUNTY | TOTAL SHEETS | SHEET NO. |
|---------------------------|---------|--------|--------------|-----------|
| | | | 39 | 15 |
| CONTRACT NO. | | | | |
| ILLINOIS FED. AID PROJECT | | | | |



LEGEND

-  POINT LOCATION
-  PROPOSED ROADWAY
-  500' RUNWAY SAFETY AREA
-  214' TAXIWAY SAFETY AREA
-  RUNWAY PROTECTION ZONE (EXISTING)
-  RUNWAY PROTECTION ZONE (FUTURE)
-  TAXIWAY OBJECT FREE AREA
-  RUNWAY OBJECT FREE AREA
-  DENOTES TUNNEL OPTION FOR WEST BYPASS / UNION PACIFIC RAILROAD GRADE SEPARATION

FILE NAME =
DIEOWB-sh-t-7460-15.dgn

USER NAME = asontag
PLOT SCALE = 400.0000' / in.
PLOT DATE = 6/28/2011

DESIGNED -
DRAWN -
CHECKED -
DATE -

REVISED -
REVISED -
REVISED -
REVISED -

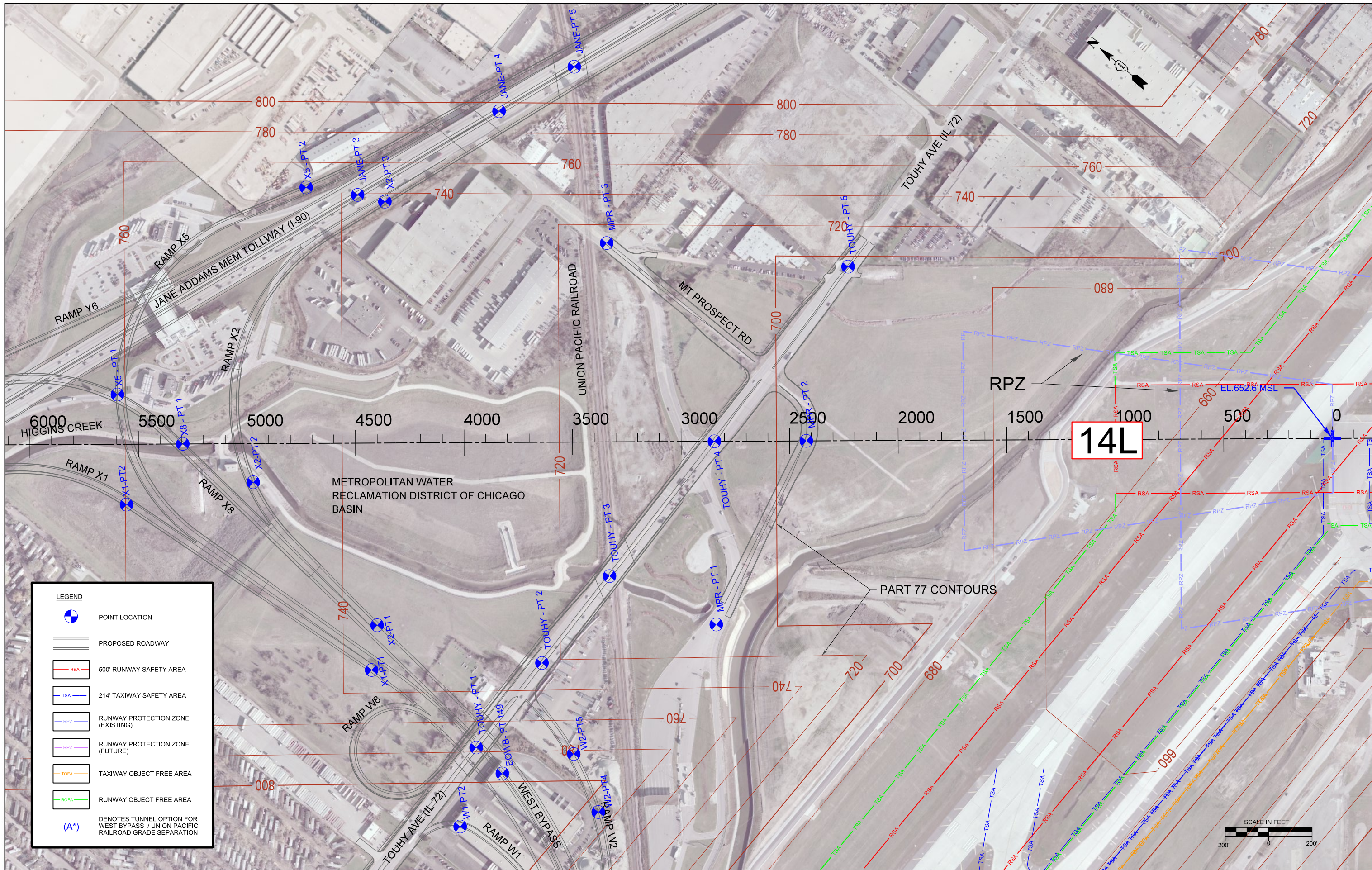


ELGIN O'HARE WEST BYPASS
communities. opportunities. solutions.

FAA FORM 7460 PLAN

SCALE: SHEET NO. 16 OF 39 SHEETS STA. TO STA.

| F.A. RTE. | SECTION | COUNTY | TOTAL SHEETS | SHEET NO. |
|---------------------------|---------|--------|--------------|-----------|
| | | | 39 | 16 |
| CONTRACT NO. | | | | |
| ILLINOIS FED. AID PROJECT | | | | |



LEGEND

- POINT LOCATION
- PROPOSED ROADWAY
- 500' RUNWAY SAFETY AREA
- 214' TAXIWAY SAFETY AREA
- RUNWAY PROTECTION ZONE (EXISTING)
- RUNWAY PROTECTION ZONE (FUTURE)
- TAXIWAY OBJECT FREE AREA
- RUNWAY OBJECT FREE AREA
- DENOTES TUNNEL OPTION FOR WEST BYPASS / UNION PACIFIC RAILROAD GRADE SEPARATION

FILE NAME = DIE0WB-sh1-7460-14L.dgn

USER NAME = asontag
 PLOT SCALE = 400.0000' / 1in.
 PLOT DATE = 6/28/2011

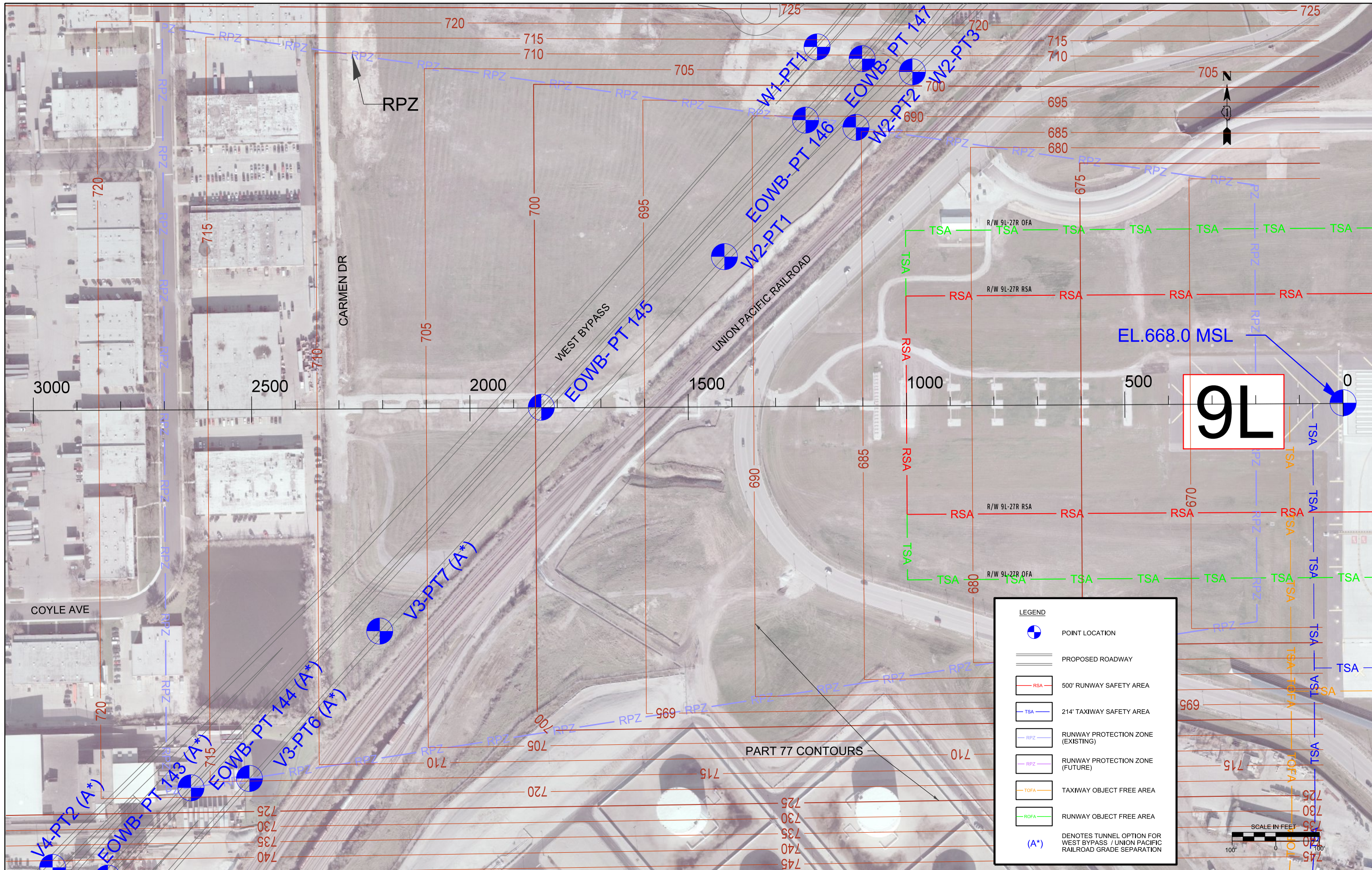
DESIGNED -
 DRAWN -
 CHECKED -
 DATE -

REVISED -
 REVISED -
 REVISED -
 REVISED -

ELGIN O'HARE WEST BYPASS
 communities. opportunities. solutions.

FAA FORM 7460 PLAN RUNWAY 14L
 SCALE: SHEET NO. 17 OF 39 SHEETS STA. TO STA.

| F.A. RTE. | SECTION | COUNTY | TOTAL SHEETS | SHEET NO. |
|---------------------------|---------|--------|--------------|-----------|
| | | | 39 | 17 |
| CONTRACT NO. | | | | |
| ILLINOIS FED. AID PROJECT | | | | |



LEGEND

- POINT LOCATION
- PROPOSED ROADWAY
- 500' RUNWAY SAFETY AREA
- 214' TAXIWAY SAFETY AREA
- RUNWAY PROTECTION ZONE (EXISTING)
- RUNWAY PROTECTION ZONE (FUTURE)
- TAXIWAY OBJECT FREE AREA
- RUNWAY OBJECT FREE AREA
- (A*) DENOTES TUNNEL OPTION FOR WEST BYPASS / UNION PACIFIC RAILROAD GRADE SEPARATION

FILE NAME = DIEOWB-shr-7460-09L.dgn

USER NAME = asontag
 PLOT SCALE = 200.0000' / 1" / in.
 PLOT DATE = 6/28/2011

DESIGNED -
 DRAWN -
 CHECKED -
 DATE -

REVISED -
 REVISED -
 REVISED -
 REVISED -

ELGIN O'HARE WEST BYPASS
 communities. opportunities. solutions.

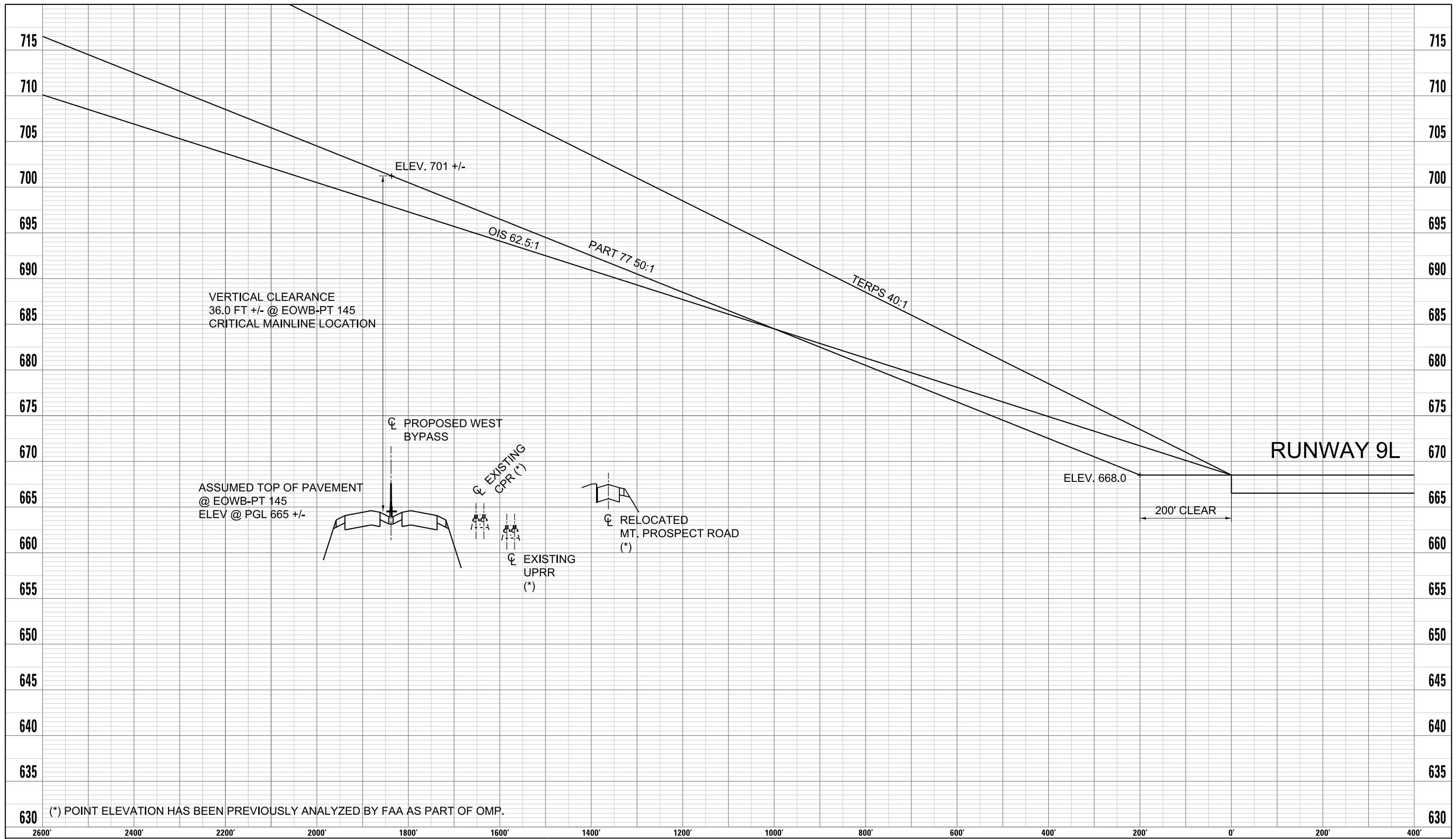
Illinois Department of Transportation

CH2M HILL

FAA FORM 7460 PLAN RUNWAY 9L

SCALE: SHEET NO. 18 OF 39 SHEETS STA. TO STA.

| F.A. RTE. | SECTION | COUNTY | TOTAL SHEETS | SHEET NO. |
|---------------------------|---------|--------|--------------|-----------|
| | | | 39 | 18 |
| CONTRACT NO. | | | | |
| ILLINOIS FED. AID PROJECT | | | | |



(*) POINT ELEVATION HAS BEEN PREVIOUSLY ANALYZED BY FAA AS PART OF OMP.

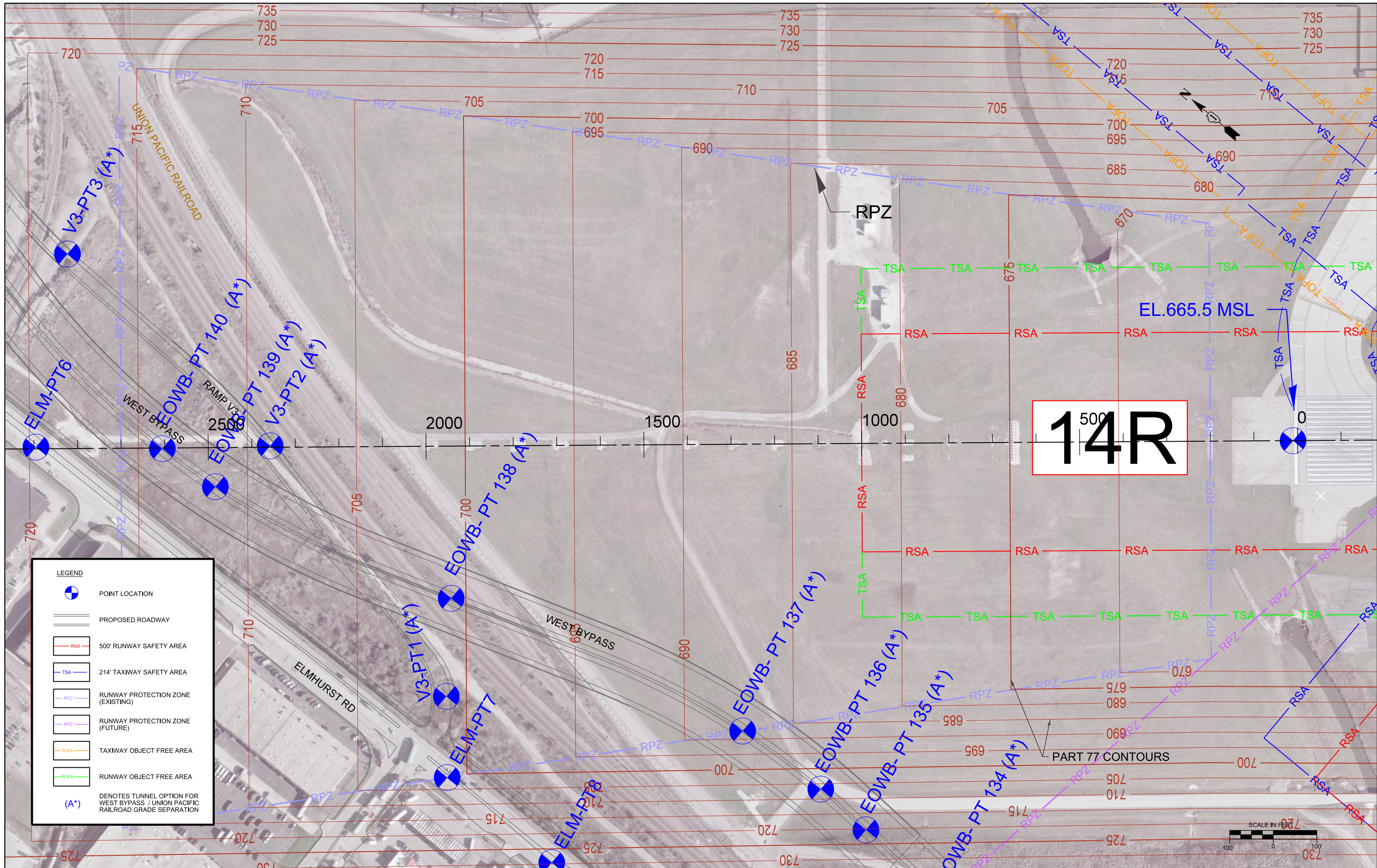
USER NAME: asandig
 FILE NAME: D:\EOWB-01\11-7-10\profile-001.dgn
 PLOT SCALE: 200.0000 / 1" = 60.0000'
 PLOT DATE: 6/29/2011

WEST BYPASS HEIGHT RESTRICTIONS NEAR FUTURE RUNWAY 9L – PROFILE VIEW



JUNE 2011





LEGEND

- POINT LOCATION
- PROPOSED ROADWAY
- 500' RUNWAY SAFETY AREA
- 214' TAXIWAY SAFETY AREA
- RUNWAY PROTECTION ZONE (EXISTING)
- RUNWAY PROTECTION ZONE (FUTURE)
- TAXIWAY OBJECT FREE AREA
- RUNWAY OBJECT FREE AREA
- (A*) DENOTES TUNNEL OPTION FOR WEST BYPASS / UNION PACIFIC RAILROAD GRADE SEPARATION

14R

FILE NAME = DIEOWB-sh1-7460-14R.dgn

USER NAME = asontag
 PLOT SCALE = 200.0000' / in.
 PLOT DATE = 6/28/2011

DESIGNED -
 DRAWN -
 CHECKED -
 DATE -

REVISED -
 REVISED -
 REVISED -
 REVISED -

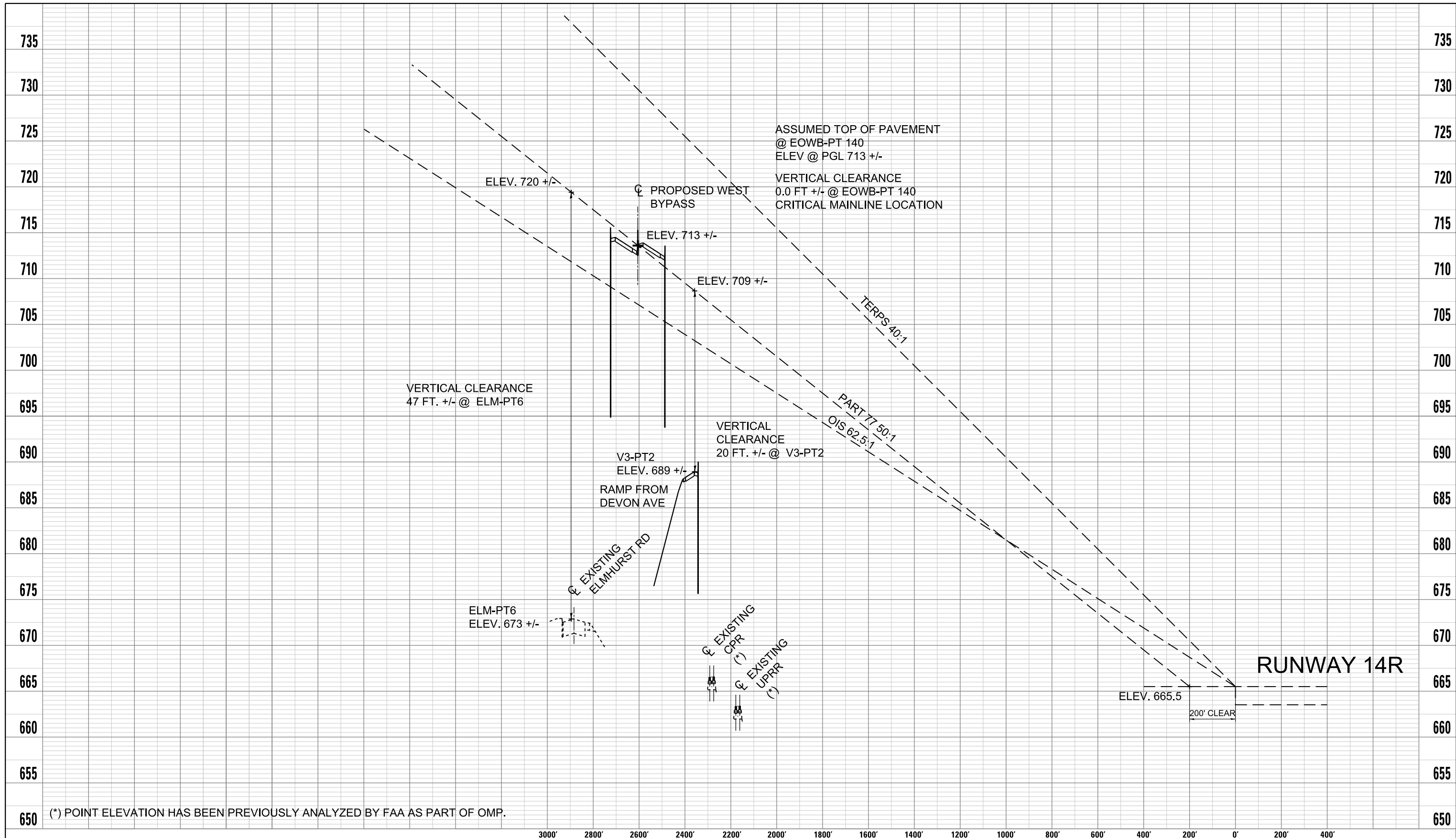
ELGIN O'HARE WEST BYPASS
 communities. opportunities. solutions.

Illinois Department of Transportation
 CH2MHILL

FAA FORM 7460 PLAN RUNWAY 14R

SCALE: SHEET NO. 20 OF 39 SHEETS STA. TO STA.

| F.A. RTE. | SECTION | COUNTY | TOTAL SHEETS | SHEET NO. |
|---------------------------|---------|--------|--------------|-----------|
| | | | 39 | 20 |
| CONTRACT NO. | | | | |
| ILLINOIS FED. AID PROJECT | | | | |



(*) POINT ELEVATION HAS BEEN PREVIOUSLY ANALYZED BY FAA AS PART OF OMP.

**WEST BYPASS HEIGHT RESTRICTIONS NEAR EXISTING RUNWAY 14R – PROFILE VIEW
WEST BYPASS OVER UPRR**

USER NAME: asandiga
FILE NAME: D:\EOWB-01\11-7-10\profile-001.dgn
PLOT SCALE: 200.0000, 7/16
PLOT DATE: 6/28/11



JUNE 2011

