

(*) POINT ELEVATION HAS BEEN PREVIOUSLY ANALYZED BY FAA AS PART OF OMP.

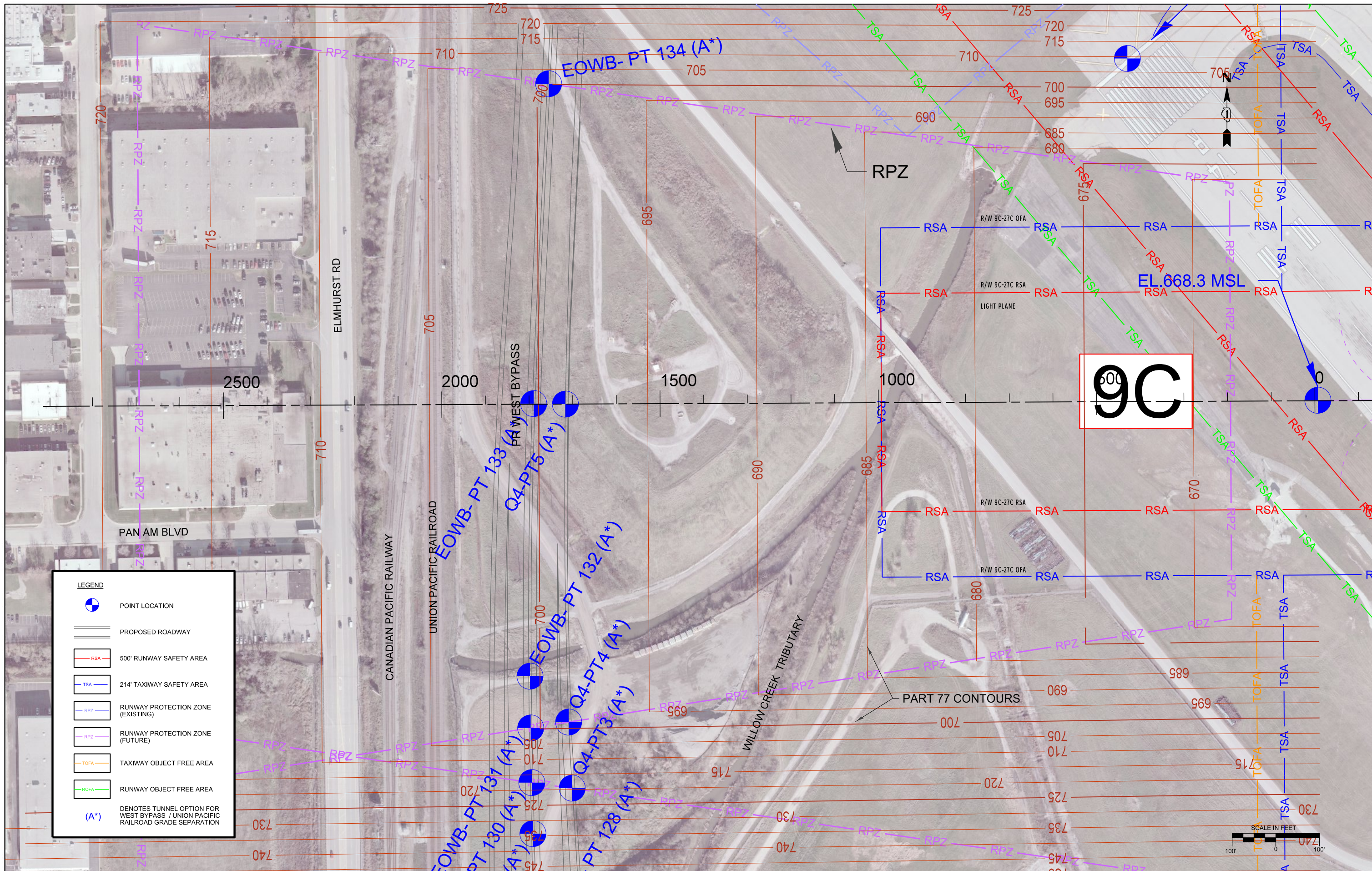
WEST BYPASS HEIGHT RESTRICTIONS NEAR EXISTING RUNWAY 14R – PROFILE VIEW
WEST BYPASS UNDER UPRR

USER NAME: asandiga
 FILE NAME: D:\EOWB-04\140A\140A\Profile-001.dgn
 PLOT SCALE: 200.0000' / 1" = 62500
 PLOT DATE: 6/29/2011



JUNE 2011





LEGEND

- POINT LOCATION
- PROPOSED ROADWAY
- 500' RUNWAY SAFETY AREA
- 214' TAXIWAY SAFETY AREA
- RUNWAY PROTECTION ZONE (EXISTING)
- RUNWAY PROTECTION ZONE (FUTURE)
- TAXIWAY OBJECT FREE AREA
- RUNWAY OBJECT FREE AREA
- DENOTES TUNNEL OPTION FOR WEST BYPASS / UNION PACIFIC RAILROAD GRADE SEPARATION

9C



FILE NAME = DIEOWB-sh-t-7460-09C.dgn

USER NAME = asontag
 PLOT SCALE = 200.0000' / 1" = 1000.0000'
 PLOT DATE = 6/28/2011

DESIGNED -
 DRAWN -
 CHECKED -
 DATE -

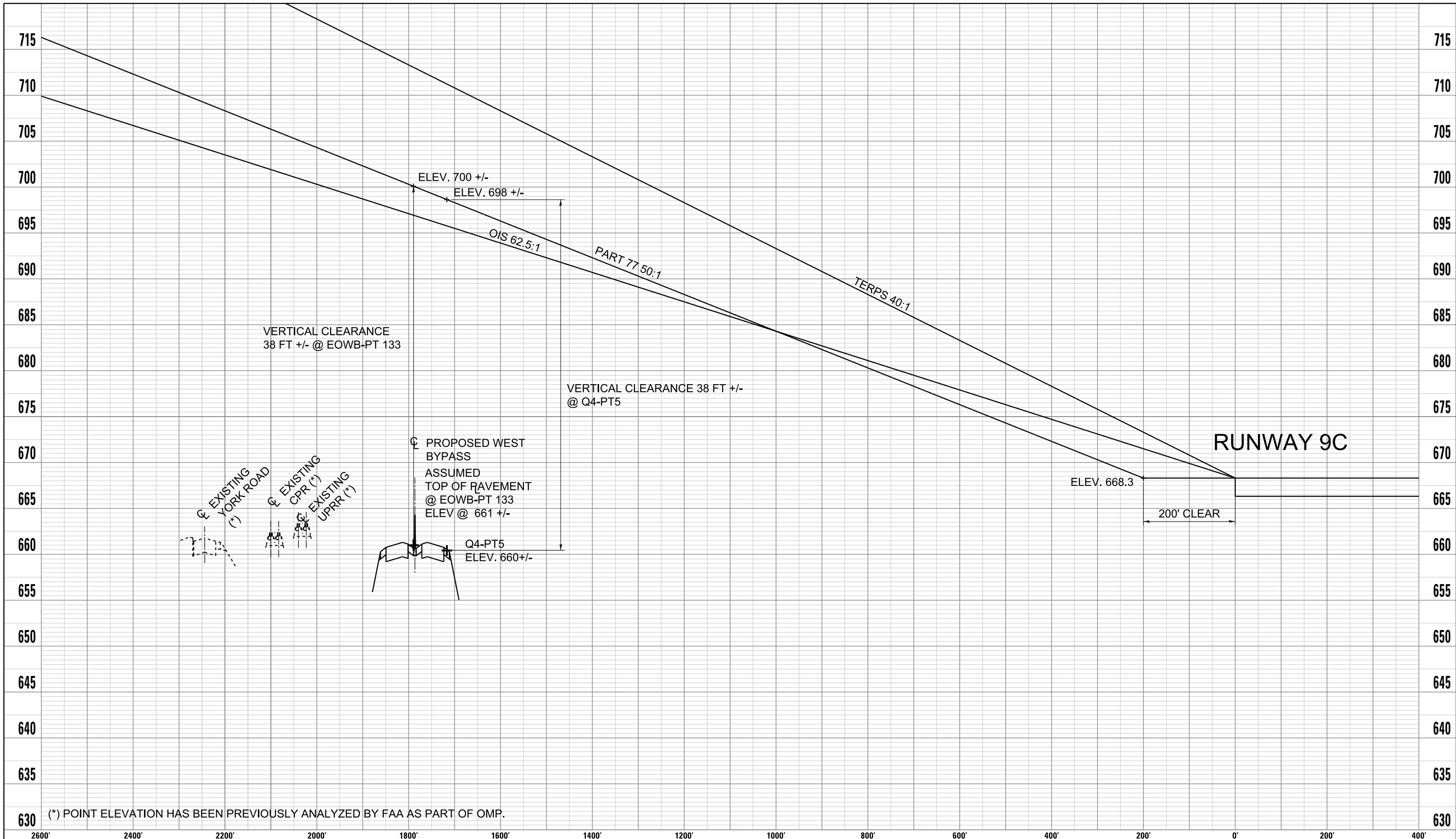
REVISED -
 REVISED -
 REVISED -
 REVISED -

ELGIN O'HARE WEST BYPASS

 communities. opportunities. solutions.

FAA FORM 7460 PLAN RUNWAY 9C
 SCALE: SHEET NO. 23 OF 39 SHEETS STA. TO STA.

F.A. RTE.	SECTION	COUNTY	TOTAL SHEETS	SHEET NO.
			39	23
CONTRACT NO.				
ILLINOIS FED. AID PROJECT				



(*) POINT ELEVATION HAS BEEN PREVIOUSLY ANALYZED BY FAA AS PART OF OMP.

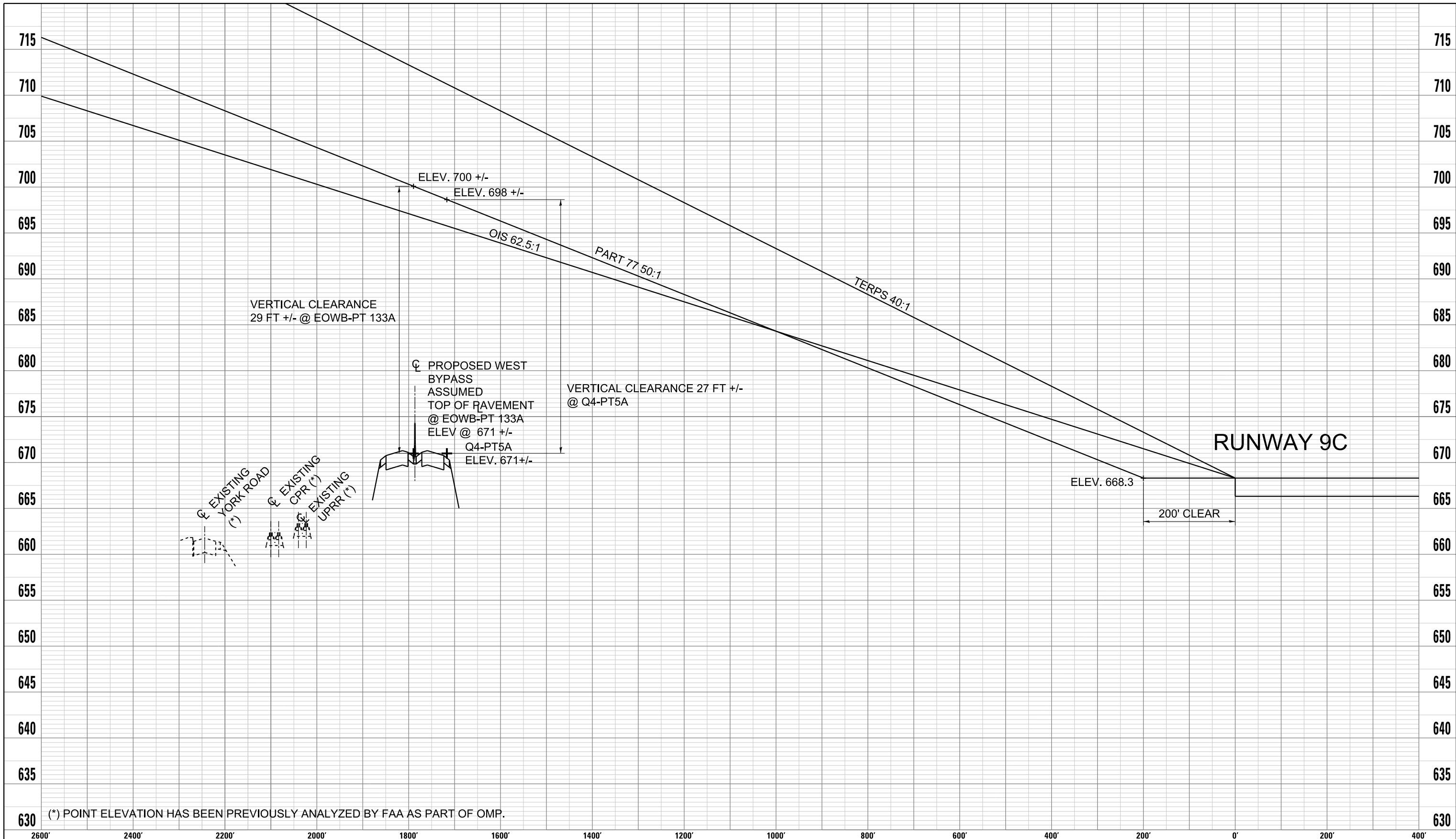
WEST BYPASS HEIGHT RESTRICTIONS NEAR FUTURE RUNWAY 9C – PROFILE VIEW WEST BYPASS OVER UPRR

USER NAME: asandiga
 FILE NAME: D:\EOWB-04\1117-7460\profile-001.dgn
 PLOT SCALE: 200.0000 / 1"=
 PLOT DATE: 6/28/2011



JUNE 2011





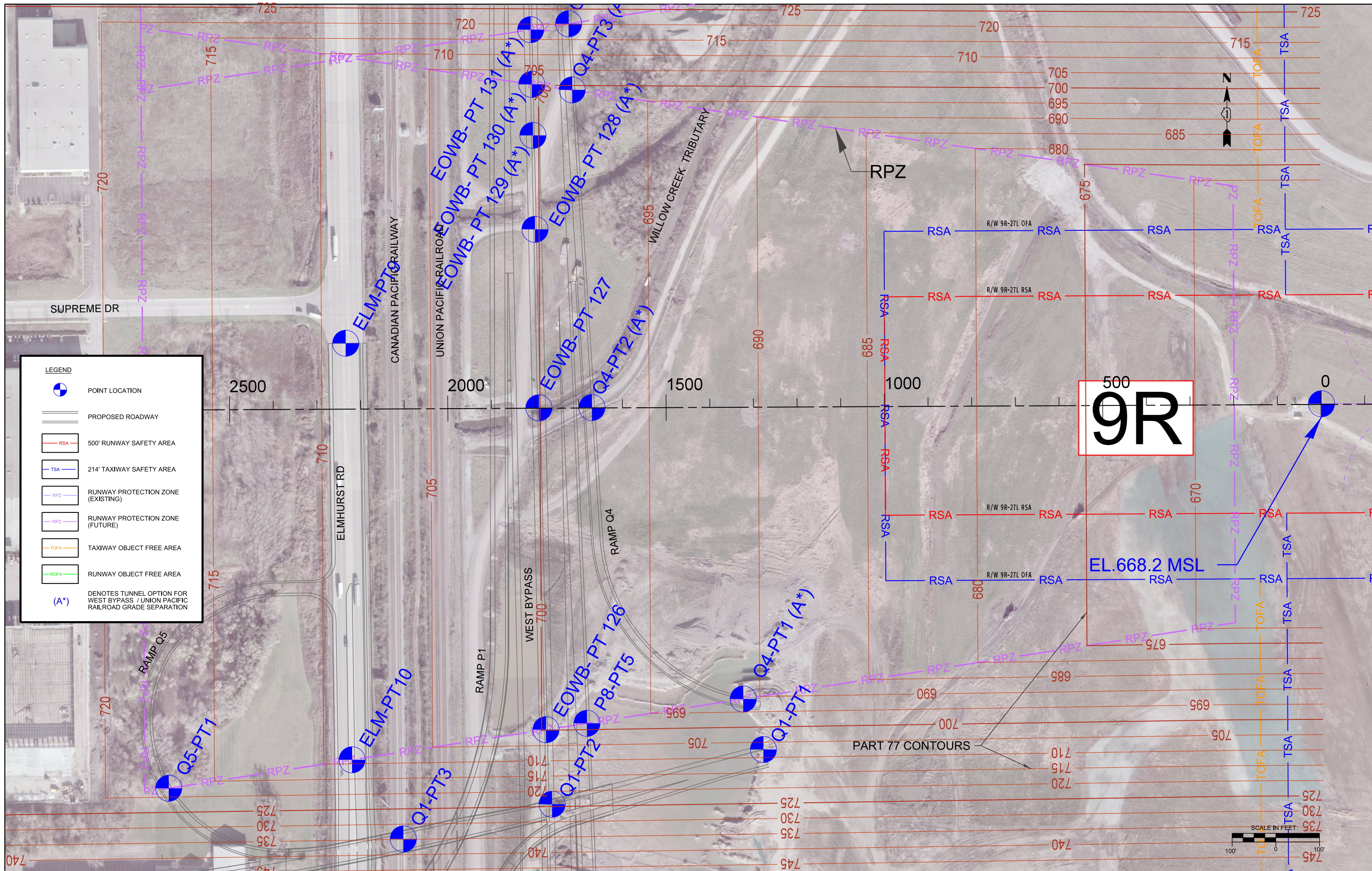
WEST BYPASS HEIGHT RESTRICTIONS NEAR FUTURE RUNWAY 9C – PROFILE VIEW
WEST BYPASS UNDER UPRR

USER NAME: asandig
 FILE NAME: D:\EOWB-01\11-7-10\profile-001.dgn
 PLOT SCALE: 200.0000 / 1"=
 PLOT DATE: 6/29/11



JUNE 2011





LEGEND

- POINT LOCATION
- PROPOSED ROADWAY
- 500' RUNWAY SAFETY AREA (RSA)
- 214' TAXIWAY SAFETY AREA (TSA)
- RUNWAY PROTECTION ZONE (EXISTING) (RPZ)
- RUNWAY PROTECTION ZONE (FUTURE) (RPZ)
- TAXIWAY OBJECT FREE AREA (TOFA)
- RUNWAY OBJECT FREE AREA (ROFA)
- (A*)** DENOTES TUNNEL OPTION FOR WEST BYPASS / UNION PACIFIC RAILROAD GRADE SEPARATION

FILE NAME = DIEOWB-sh-t-7460-09R.dgn

USER NAME = asontag
 PLOT SCALE = 200.0000' / 1" = 200'
 PLOT DATE = 6/28/2011

DESIGNED -
 DRAWN -
 CHECKED -
 DATE -

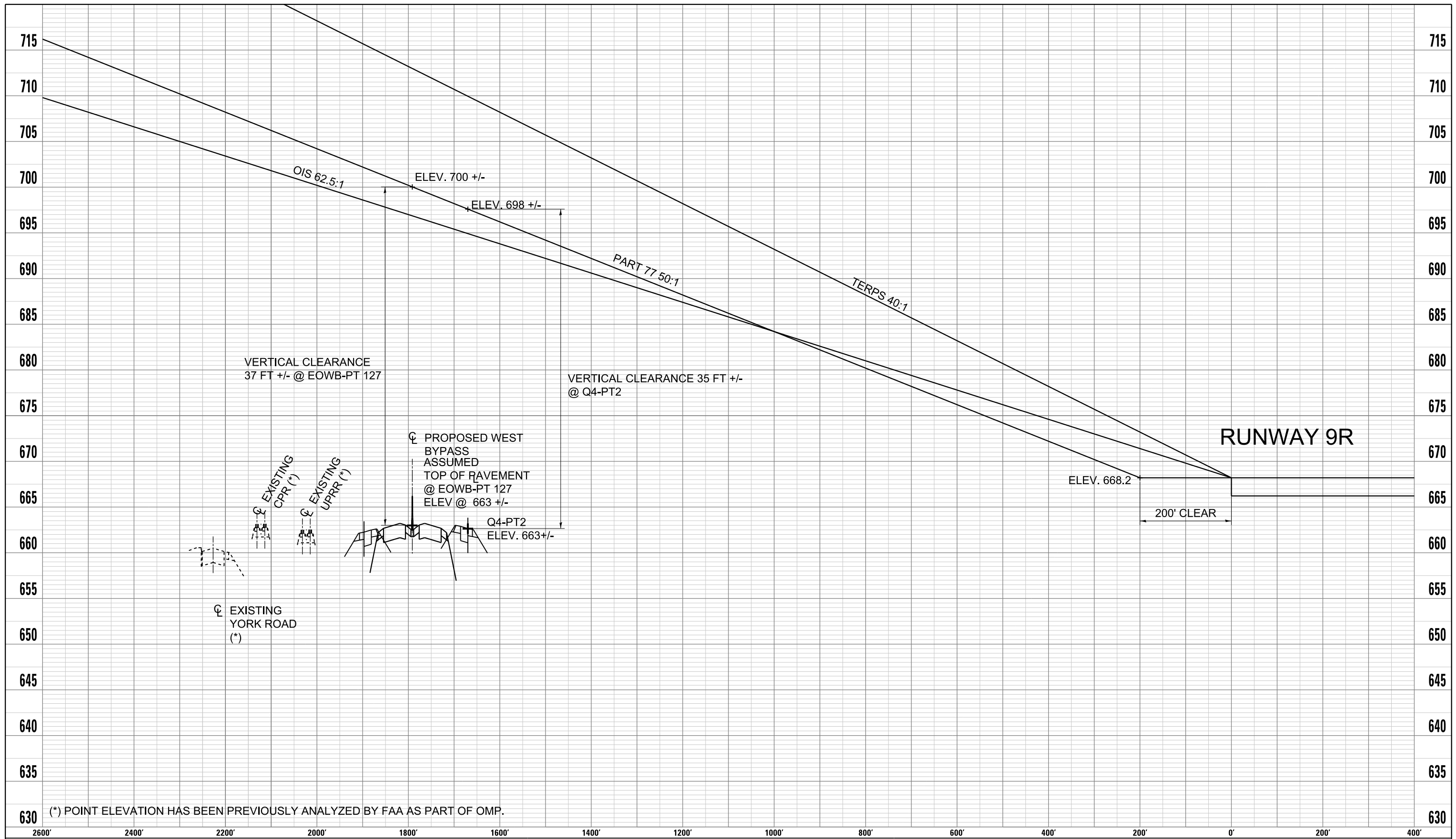
REVISED -
 REVISED -
 REVISED -
 REVISED -

ELGIN O'HARE WEST BYPASS

 communities. opportunities. solutions.

FAA FORM 7460 PLAN RUNWAY 9R
 SCALE: SHEET NO. 26 OF 39 SHEETS STA. TO STA.

F.A. RTE.	SECTION	COUNTY	TOTAL SHEETS	SHEET NO.
			39	26
CONTRACT NO.				
ILLINOIS FED. AID PROJECT				



(*) POINT ELEVATION HAS BEEN PREVIOUSLY ANALYZED BY FAA AS PART OF OMP.

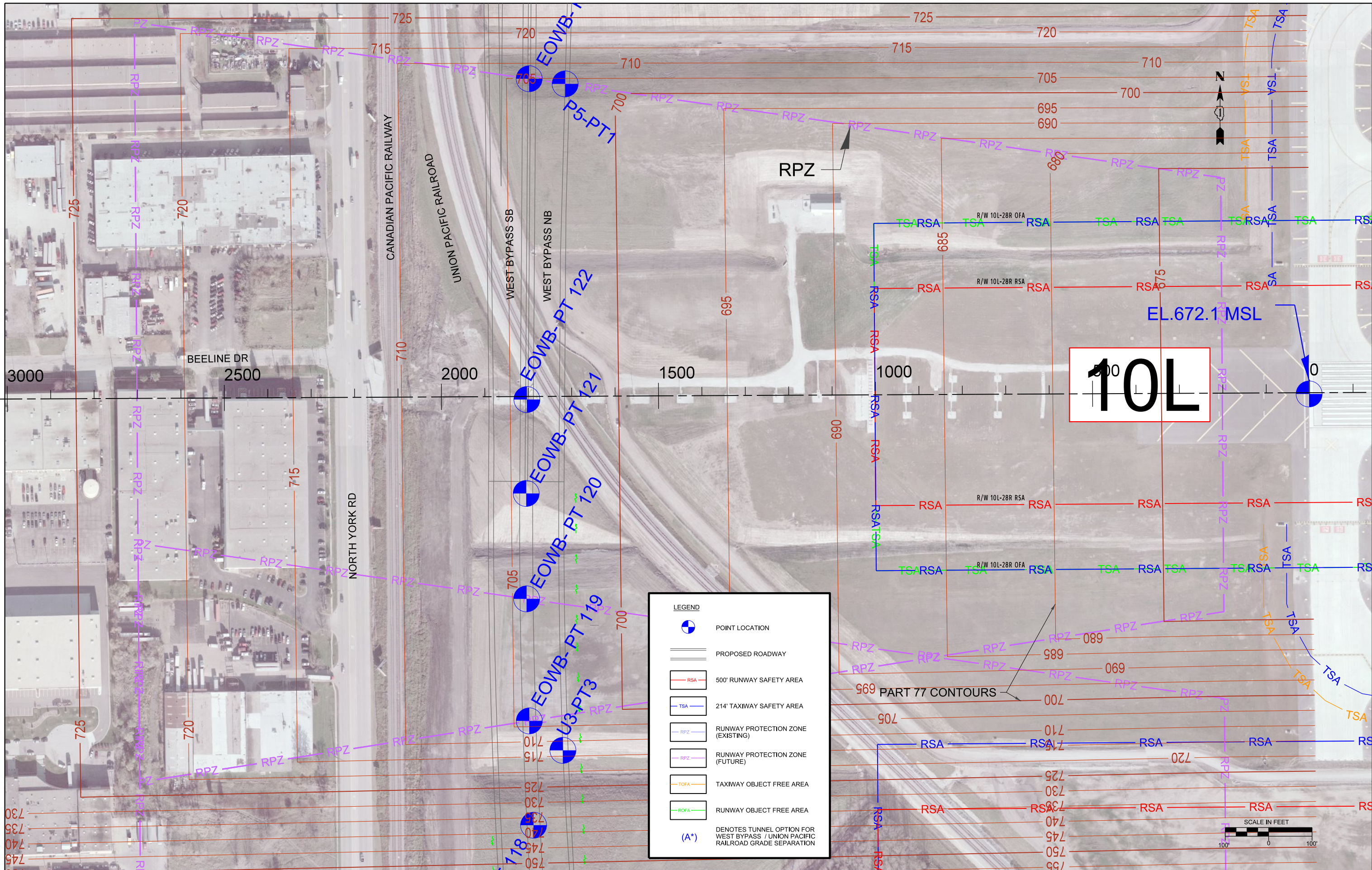
USER NAME: asandig
 FILE NAME: D:\EOWB-01\11-7-10\profile-001.dgn
 PLOT SCALE: 200.0000' / 1" = 6289011
 PLOT DATE: 6/28/11

WEST BYPASS HEIGHT RESTRICTIONS NEAR FUTURE RUNWAY 9R – PROFILE VIEW



JUNE 2011





10L

EL. 672.1 MSL

LEGEND

- POINT LOCATION
- PROPOSED ROADWAY
- 500' RUNWAY SAFETY AREA
- 214' TAXIWAY SAFETY AREA
- RUNWAY PROTECTION ZONE (EXISTING)
- RUNWAY PROTECTION ZONE (FUTURE)
- TAXIWAY OBJECT FREE AREA
- RUNWAY OBJECT FREE AREA
- DENOTES TUNNEL OPTION FOR WEST BYPASS / UNION PACIFIC RAILROAD GRADE SEPARATION

PROJECT NAME =
DIEOWB-sh-t-7460-10L.dgn

USER NAME = asontag
PLOT SCALE = 200.0000' / 1" =
PLOT DATE = 6/28/2011

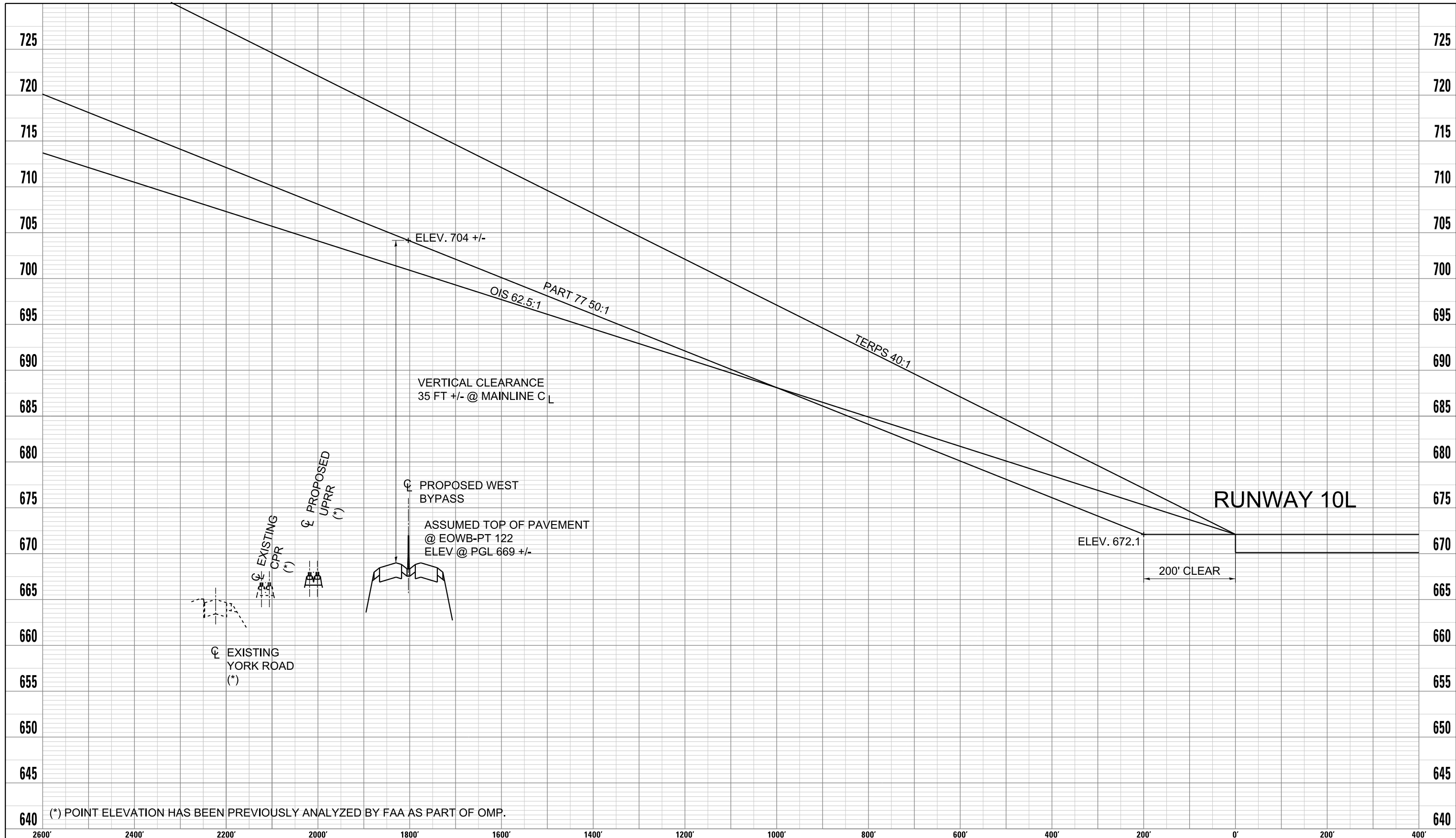
DESIGNED -
DRAWN -
CHECKED -
DATE -

REVISED -
REVISED -
REVISED -
REVISED -

ELGIN O'HARE WEST BYPASS
communities. opportunities. solutions.

FAA FORM 7460 PLAN
RUNWAY 10L
SCALE: SHEET NO. 28 OF 39 SHEETS STA. TO STA.

F.A. RTE.	SECTION	COUNTY	TOTAL SHEETS	SHEET NO.
			39	28
CONTRACT NO.				
ILLINOIS FED. AID PROJECT				



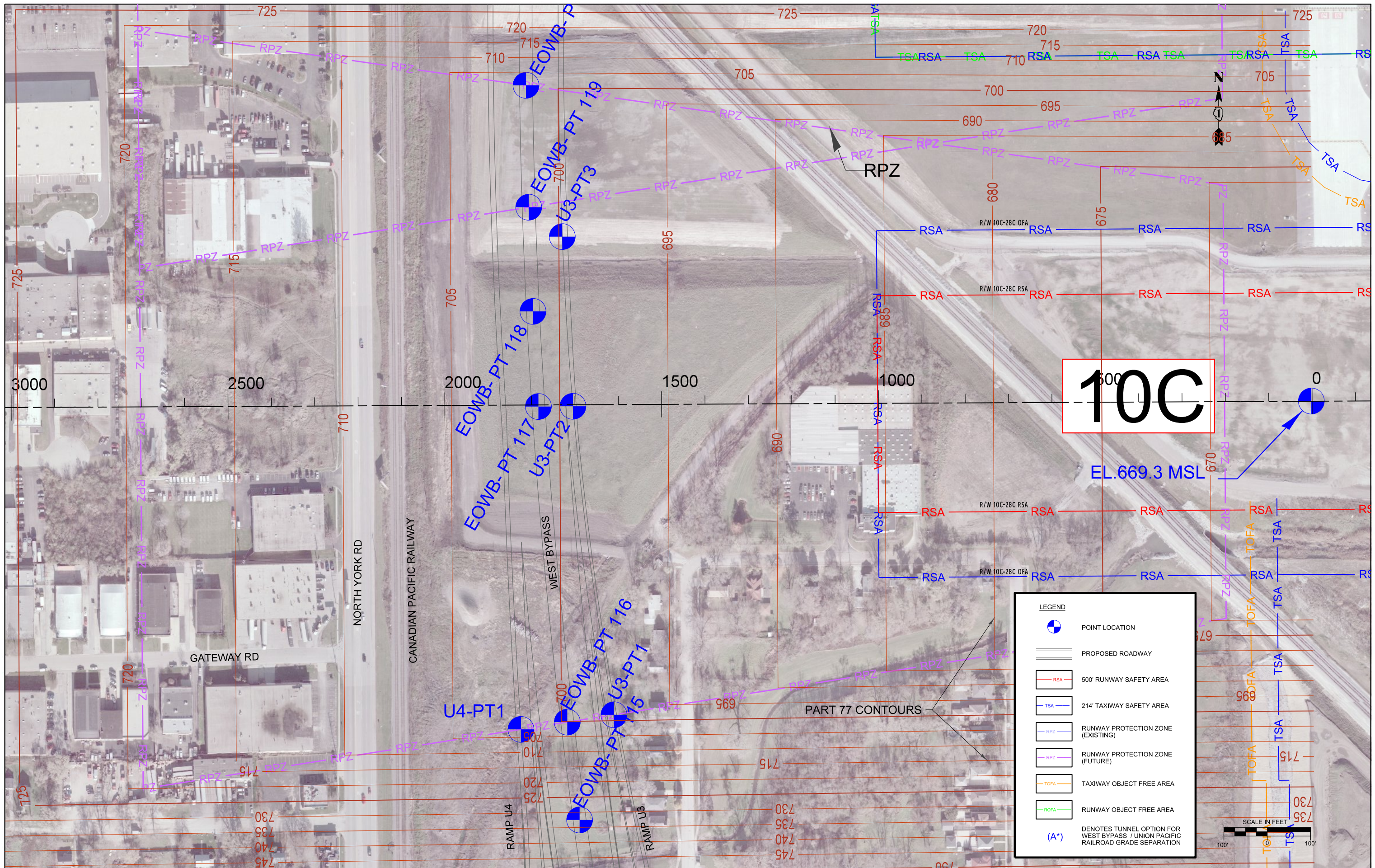
USER NAME: asandig
 FILE NAME: D:\EOWB-01\11-7-10\Profile-01.dgn
 PLOT SCALE: 200.0000 / 1" = 200.0000'
 PLOT DATE: 6/29/11

WEST BYPASS HEIGHT RESTRICTIONS NEAR FUTURE RUNWAY 10L – PROFILE VIEW



JUNE 2011





FILE NAME = DIEOWB-sh-t-7468-10C.dgn
 USER NAME = asontag
 PLOT SCALE = 200.0000' / 1" / in.
 PLOT DATE = 6/28/2011

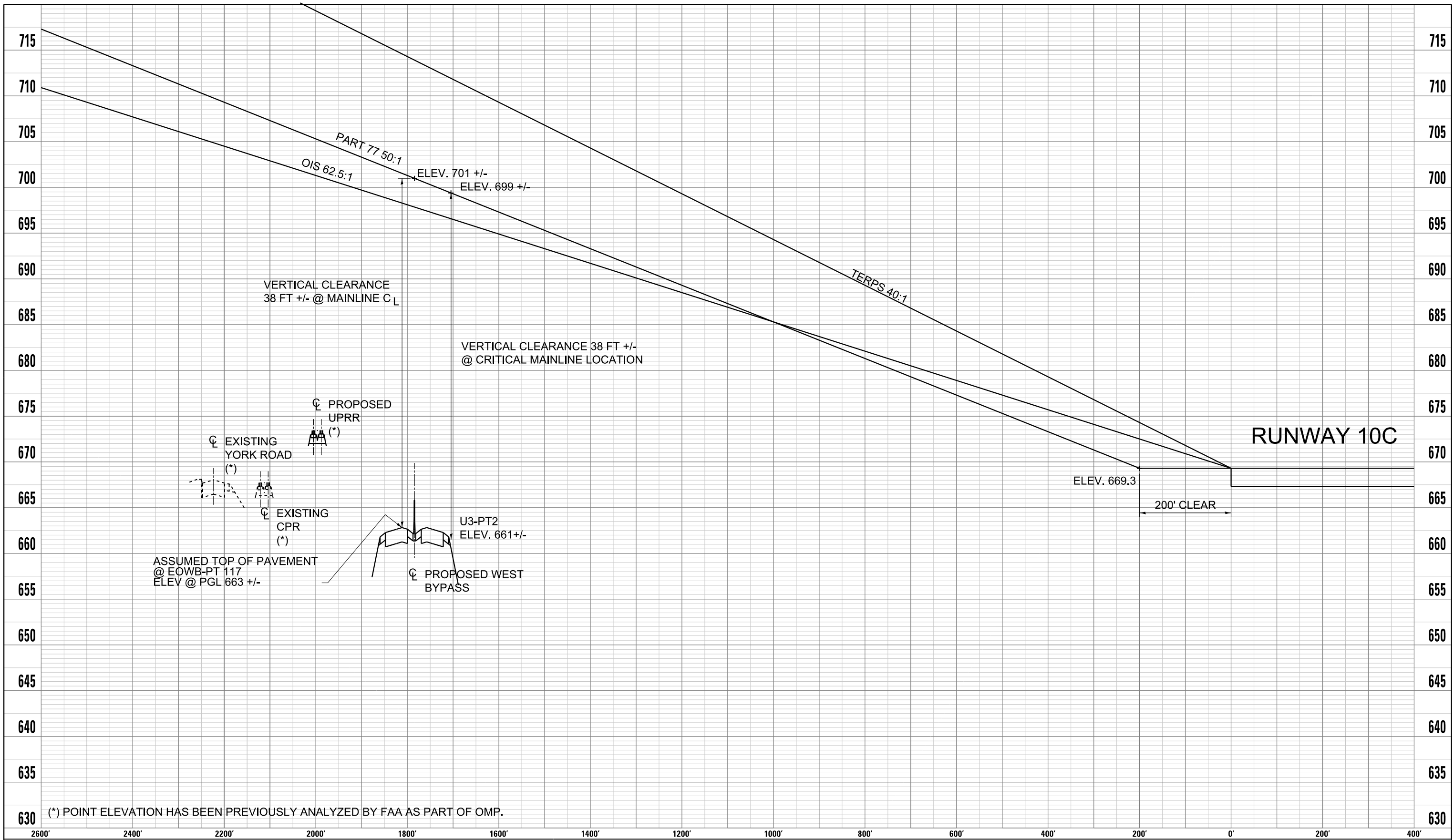
DESIGNED -
 DRAWN -
 CHECKED -
 DATE -

REVISED -
 REVISED -
 REVISED -
 REVISED -

ELGIN O'HARE WEST BYPASS
 communities. opportunities. solutions.
 Illinois Department of Transportation
 CH2MHILL

FAA FORM 7460 PLAN RUNWAY 10C
 SCALE: SHEET NO. 30 OF 39 SHEETS STA. TO STA.

F.A. RTE.	SECTION	COUNTY	TOTAL SHEETS	SHEET NO.
			39	30
CONTRACT NO.				
ILLINOIS FED. AID PROJECT				



(*) POINT ELEVATION HAS BEEN PREVIOUSLY ANALYZED BY FAA AS PART OF OMP.

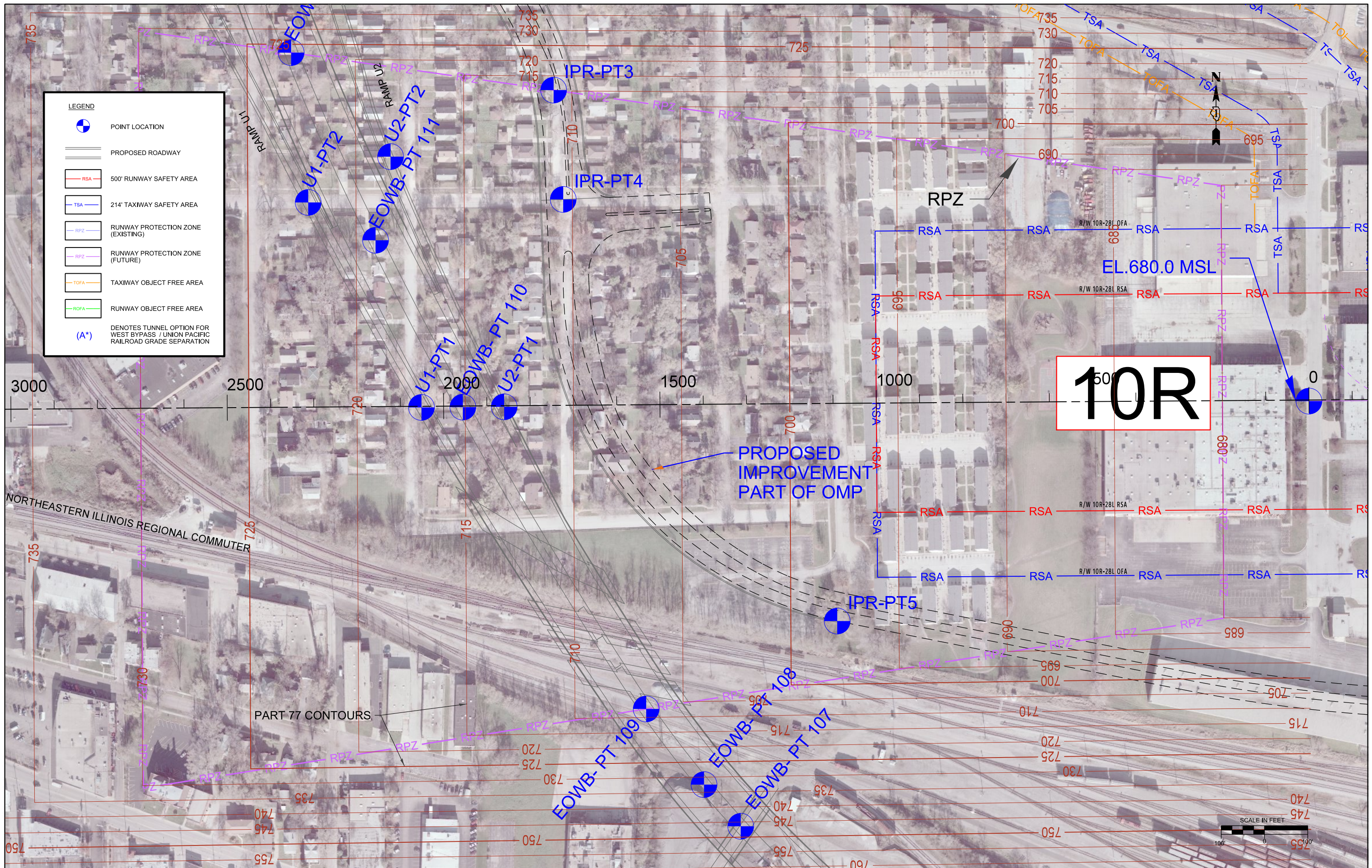
USER NAME: asandig
 FILE NAME: D:\EOWB-01\117\7460\profile-001.dgn
 PLOT SCALE: 200.0000 / 1in.
 PLOT DATE: 6/29/2011

WEST BYPASS HEIGHT RESTRICTIONS NEAR FUTURE RUNWAY 10C – PROFILE VIEW

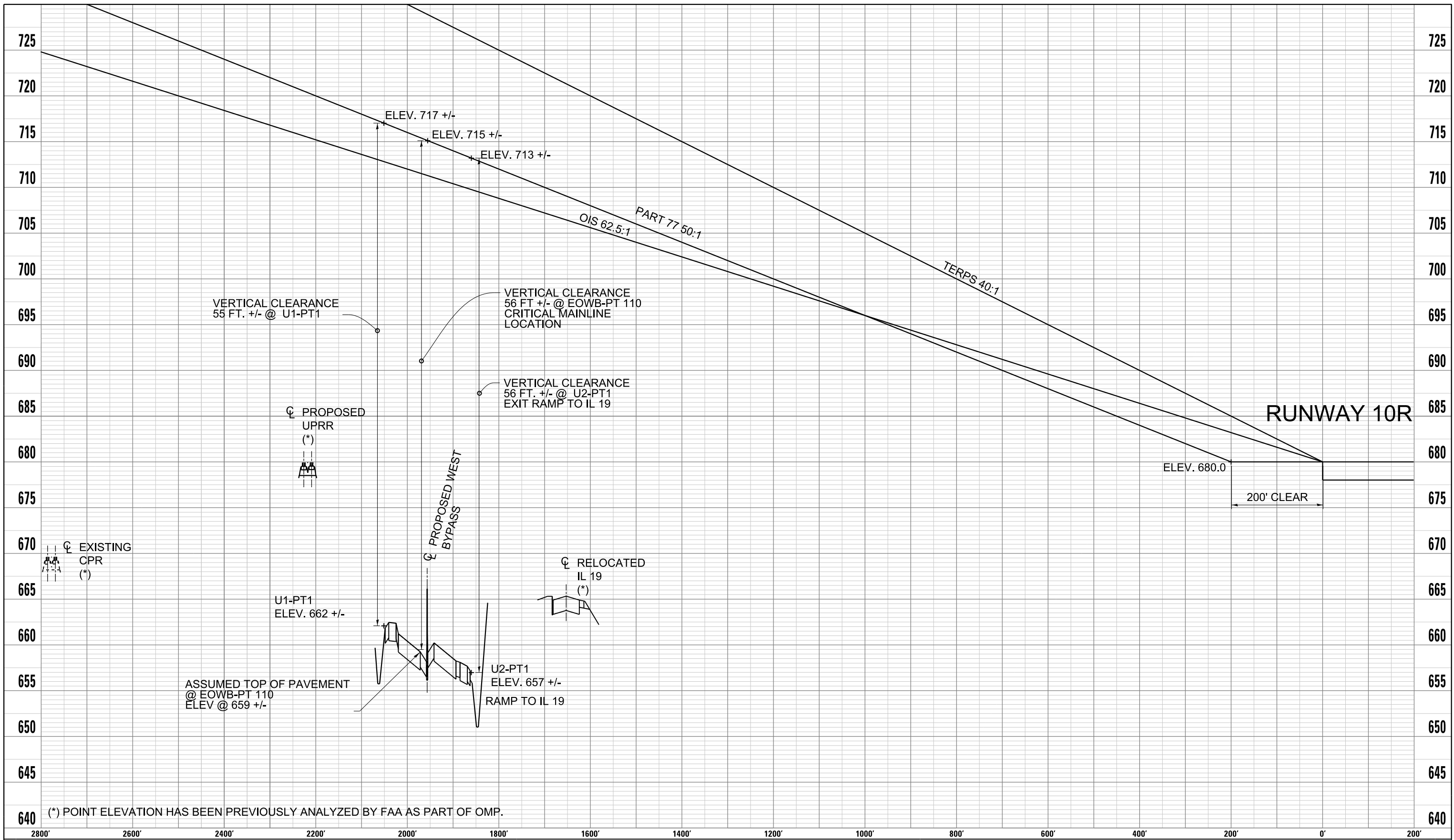


JUNE 2011





FILE NAME = DIEOWB-sh-t-7468-10R.dgn	USER NAME = osontag	DESIGNED - DRAWN -	REVISED - REVISED -	ELGIN O'HARE WEST BYPASS communities. opportunities. solutions.	FAA FORM 7460 PLAN RUNWAY 10R	F.A. RTE.	SECTION	COUNTY	TOTAL SHEETS 39	SHEET NO. 32
	PLOT SCALE = 200.0000' / 1" /	CHECKED - DATE -	REVISED - REVISED -	Illinois Department of Transportation	SCALE: SHEET NO. 32 OF 39 SHEETS STA. TO STA.	CONTRACT NO.		ILLINOIS FED. AID PROJECT		



USER NAME: asandig
 FILE NAME: D:\EOWB-01\11-7-10\profile-001.dgn
 PLOT SCALE: 200.0000' / 1" = 628901
 PLOT DATE: 6/28/11

WEST BYPASS HEIGHT RESTRICTIONS NEAR FUTURE RUNWAY 10R – PROFILE VIEW



JUNE 2011

