



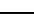

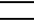




**LEGEND**

-  POINT LOCATION
-  PROPOSED ROADWAY
-  500' RUNWAY SAFETY AREA
-  214' TAXIWAY SAFETY AREA
-  RUNWAY PROTECTION ZONE (EXISTING)
-  RUNWAY PROTECTION ZONE (FUTURE)
-  TAXIWAY OBJECT FREE AREA
-  RUNWAY OBJECT FREE AREA
-  DENOTES TUNNEL OPTION FOR WEST BYPASS / UNION PACIFIC RAILROAD GRADE SEPARATION

FILE NAME = DIEOWB-sh-t-7460-04R.dgn

USER NAME = asontag  
 PLOT SCALE = 400.0000' / in.  
 PLOT DATE = 6/28/2011

DESIGNED -  
 DRAWN -  
 CHECKED -  
 DATE -

REVISED -  
 REVISED -  
 REVISED -  
 REVISED -



ELGIN O'HARE WEST BYPASS  
 communities. opportunities. solutions.

FAA FORM 7460 PLAN  
**RUNWAY 4R**  
 SCALE: SHEET NO. 34 OF 39 SHEETS STA. TO STA.

F.A. RTE.	SECTION	COUNTY	TOTAL SHEETS	SHEET NO.
			39	34
CONTRACT NO.				
ILLINOIS FED. AID PROJECT				



POINT NO.	LONGITUDE / LATITUDE (FT)		IL STATE PLANE (FT)		EXISTING GROUND ELEV.	PROPOSED GROUND ELEV.	MAXIMUM GROUND ELEV.	MAX. EQUIPMENT HEIGHT (CONSTRUCTION)		MAX. EQUIPMENT HEIGHT (PERMANENT)		MAXIMUM ELEV. (CONSTRUCTION)	MAXIMUM ELEV. (PERMANENT)	SHEET NO.
	LATITUDE	LONGITUDE	NORTHING	EASTING	(AMSL)	(AMSL)	(AMSL)	(AGL) (FT)	CONSTR. TYPE	(AGL) (FT)	CONTROLLING EQU.	(AMSL)	(AMSL)	
CENTRAL SECTION														
ELM-PT9	41° 59' 3.488" N	87° 56' 23.235" W	1937115.495	1091247.144	660.4	660.4	660.4	25.0	FILL/CUT	17.0	VEHICULAR CLEARANCE	685.4	677.4	7
ELM-PT10	41° 58' 54.066" N	87° 56' 23.099" W	1936161.805	1091261.828	661.1	661.4	661.4	25.0	FILL/CUT	17.0	VEHICULAR CLEARANCE	686.4	678.4	7
EOWB - PT 1	41° 58' 57.433" N	87° 57' 27.337" W	1936480.827	1086408.683	677.3	706.6	706.6	50.0	LIGHTING	35.0	LIGHT POLE	756.6	741.6	6
EOWB - PT 2	41° 58' 54.004" N	87° 57' 10.750" W	1936139.277	1087662.988	666.4	698.9	698.9	50.0	MULTI SPAN/LEVEL BRIDGE	35.0	LIGHT POLE	748.9	733.9	6
EOWB - PT 3	41° 58' 50.280" N	87° 56' 52.898" W	1935768.314	1089012.946	675.9	675.9	675.9	50.0	LIGHTING	35.0	LIGHT POLE	725.9	710.9	6
EOWB - PT 4	41° 58' 45.588" N	87° 56' 36.859" W	1935298.846	1090226.51	661.6	682.7	682.7	50.0	LIGHTING	35.0	LIGHT POLE	732.7	717.7	7
EOWB - PT 5	41° 58' 34.758" N	87° 56' 19.864" W	1934208.478	1091515.12	660.8	701.7	701.7	50.0	MULTI SPAN/LEVEL BRIDGE	35.0	LIGHT POLE	751.7	736.7	8
EOWB - PT 6	41° 58' 26.112" N	87° 56' 14.070" W	1933335.335	1091956.824	714.0	696.8	714.0	50.0	LIGHTING	35.0	LIGHT POLE	746.8	731.8	8
EOWB- PT 122	41° 58' 8.337" N	87° 56' 17.367" W	1931534.974	1091716.047	661.5	668.8	668.8	50.0	SIGNING/LIGHTING	35.0	LIGHT POLE	718.8	703.8	8
EOWB- PT 123	41° 58' 15.636" N	87° 56' 17.252" W	1932273.794	1091721.335	676.2	672.5	676.2	50.0	LIGHTING	35.0	LIGHT POLE	722.5	707.5	8
EOWB- PT 124	41° 58' 18.011" N	87° 56' 17.215" W	1932514.184	1091723.055	693.9	673.7	693.9	50.0	SIGNING/LIGHTING	35.0	LIGHT POLE	723.7	708.7	8
EOWB- PT 125	41° 58' 23.077" N	87° 56' 17.135" W	1933027.099	1091726.726	697.1	675.7	697.1	50.0	LIGHTING	35.0	LIGHT POLE	725.7	710.7	8
EOWB- PT 126	41° 58' 54.727" N	87° 56' 17.213" W	1936230.772	1091706	658.8	662.6	662.6	50.0	LIGHTING	35.0	LIGHT POLE	712.6	697.6	7
EOWB- PT 127	41° 59' 2.008" N	87° 56' 17.383" W	1936967.719	1091689.78	647.5	663.0	663.0	50.0	LIGHTING	35.0	LIGHT POLE	713.0	698.0	7
EOWB- PT 128	41° 59' 6.047" N	87° 56' 17.477" W	1937376.456	1091680.783	654.7	664.6	664.6	50.0	LIGHTING	35.0	LIGHT POLE	714.6	699.6	7
EOWB- PT 129	41° 59' 8.171" N	87° 56' 17.527" W	1937591.523	1091676.05	654.1	664.0	664.0	50.0	LIGHTING	35.0	LIGHT POLE	714.0	699.0	7
EOWB- PT 130	41° 59' 9.326" N	87° 56' 17.554" W	1937708.402	1091673.477	653.4	663.4	663.4	50.0	LIGHTING	35.0	LIGHT POLE	713.4	698.4	7
EOWB- PT 131	41° 59' 10.563" N	87° 56' 17.581" W	1937833.583	1091670.882	652.1	662.8	662.8	50.0	LIGHTING	35.0	LIGHT POLE	712.8	697.8	7
EOWB- PT 132	41° 59' 11.733" N	87° 56' 17.594" W	1937952.06	1091669.344	653.0	662.2	662.2	50.0	LIGHTING	35.0	LIGHT POLE	712.2	697.2	7
EOWB- PT 133	41° 59' 17.899" N	87° 56' 17.444" W	1938576.23	1091677.796	677.5	661.2	677.5	50.0	LIGHTING	35.0	LIGHT POLE	711.2	696.2	7
EOWB- PT 134	41° 59' 25.133" N	87° 56' 16.946" W	1939308.601	1091712.023	692.5	676.6	692.5	25.0	FILL/CUT	17.0	VEHICULAR CLEARANCE	701.6	693.6	5
EOWB- PT 128A*	41° 59' 6.047" N	87° 56' 17.477" W	1937376.456	1091680.783	654.7	665.1	665.1	50.0	LIGHTING	35.0	LIGHT POLE	715.1	700.1	7
EOWB- PT 129A*	41° 59' 8.171" N	87° 56' 17.527" W	1937591.523	1091676.05	654.1	666.2	666.2	50.0	LIGHTING	35.0	LIGHT POLE	716.2	701.2	7
EOWB- PT 130A*	41° 59' 9.326" N	87° 56' 17.554" W	1937708.402	1091673.477	653.4	666.7	666.7	50.0	LIGHTING	35.0	LIGHT POLE	716.7	701.7	7
EOWB- PT 131A*	41° 59' 10.563" N	87° 56' 17.581" W	1937833.583	1091670.882	652.1	667.4	667.4	50.0	LIGHTING	35.0	LIGHT POLE	717.4	702.4	7
EOWB- PT 132A*	41° 59' 11.733" N	87° 56' 17.594" W	1937952.06	1091669.344	653.0	668.0	668.0	50.0	LIGHTING	35.0	LIGHT POLE	718.0	703.0	7
EOWB- PT 133A*	41° 59' 17.899" N	87° 56' 17.444" W	1938576.23	1091677.796	677.5	671.1	677.5	50.0	LIGHTING	35.0	LIGHT POLE	727.5	706.1	7
EOWB- PT 134A*	41° 59' 25.133" N	87° 56' 16.946" W	1939308.601	1091712.023	692.5	667.7	692.5	25.0	FILL/CUT	17.0	VEHICULAR CLEARANCE	717.5	684.7	5
FRONT - PT 1	41° 58' 49.634" N	87° 56' 57.791" W	1935701.308	1088643.679	672.0	675.4	675.4	25.0	FILL/CUT	17.0	VEHICULAR CLEARANCE	700.4	692.4	6
O8- PT 1	41° 58' 51.398" N	87° 56' 47.899" W	1935883.221	1089389.976	667.6	670.1	670.1	50.0	LIGHTING	35.0	LIGHT POLE	720.1	705.1	7
P2 - PT 1	41° 58' 46.291" N	87° 56' 40.758" W	1935368.706	1089931.69	662.2	683.1	683.1	50.0	LIGHTING	35.0	LIGHT POLE	733.1	718.1	7
P2 - PT 2	41° 58' 33.850" N	87° 56' 26.393" W	1934114.315	1091022.374	666.1	715.8	715.8	50.0	MULTI SPAN/LEVEL BRIDGE	35.0	LIGHT POLE	765.8	750.8	8
P2 - PT 3	41° 58' 24.001" N	87° 56' 18.562" W	1933120.108	1091618.467	670.8	680.5	680.5	50.0	LIGHTING	35.0	LIGHT POLE	730.5	715.5	8
P5 - PT 1	41° 58' 15.515" N	87° 56' 16.156" W	1932261.966	1091804.187	679.7	671.8	679.7	50.0	LIGHTING	35.0	LIGHT POLE	721.8	706.8	8
P5 - PT 2	41° 58' 42.790" N	87° 56' 16.631" W	1935022.621	1091755.602	669.0	704.9	704.9	50.0	MULTI SPAN/LEVEL BRIDGE	35.0	LIGHT POLE	754.9	739.9	7
P5 - PT 3	41° 58' 46.843" N	87° 56' 23.044" W	1935430.661	1091269.349	665.2	694.4	694.4	50.0	MULTI SPAN/LEVEL BRIDGE	35.0	LIGHT POLE	744.4	729.4	7
P5 - PT 4	41° 58' 47.919" N	87° 56' 26.001" W	1935538.602	1091045.464	661.8	689.6	689.6	50.0	MULTI SPAN/LEVEL BRIDGE	35.0	LIGHT POLE	739.6	724.6	7
P5 - PT 5	41° 58' 49.221" N	87° 56' 39.207" W	1935665.834	1090047.456	662.5	693.4	693.4	30.0	BRIDGE	17.0	VEHICULAR CLEARANCE	723.4	710.4	7
P5 - PT 6	41° 58' 50.854" N	87° 56' 51.681" W	1935826.844	1089104.575	673.0	676.5	676.5	50.0	LIGHTING	35.0	LIGHT POLE	726.5	711.5	6
P8 - PT 1	41° 58' 33.125" N	87° 56' 22.974" W	1934042.147	1091280.999	666.0	727.9	727.9	50.0	MULTI SPAN/LEVEL BRIDGE	35.0	LIGHT POLE	777.9	762.9	8
P8 - PT 2	41° 58' 33.120" N	87° 56' 18.230" W	1934043.284	1091639.277	665.9	730.9	730.9	50.0	MULTI SPAN/LEVEL BRIDGE	35.0	LIGHT POLE	780.9	765.9	8
P8 - PT 3	41° 58' 34.658" N	87° 56' 14.883" W	1934200.07	1091891.386	667.8	727.0	727.0	50.0	MULTI SPAN/LEVEL BRIDGE	35.0	LIGHT POLE	777.0	762.0	8
P8 - PT 4	41° 58' 45.888" N	87° 56' 14.780" W	1935336.883	1091893.912	662.2	686.1	686.1	50.0	LIGHTING	35.0	LIGHT POLE	736.1	721.1	7
P8 - PT 5	41° 58' 54.867" N	87° 56' 15.971" W	1936245.338	1091799.81	655.0	661.7	661.7	50.0	LIGHTING	35.0	LIGHT POLE	711.7	696.7	7
Q1- PT 1	41° 58' 54.257" N	87° 56' 10.623" W	1936185.425	1092203.976	663.2	683.2	683.2	25.0	FILL/CUT	17.0	VEHICULAR CLEARANCE	708.2	700.2	7
Q1- PT 2	41° 58' 53.040" N	87° 56' 17.039" W	1936060.055	1091719.949	659.4	691.1	691.1	50.0	MULTI SPAN/LEVEL BRIDGE	35.0	LIGHT POLE	741.1	726.1	7
Q1- PT 3	41° 58' 52.271" N	87° 56' 21.557" W	1935980.593	1091379.118	661.9	693.5	693.5	50.0	MULTI SPAN/LEVEL BRIDGE	35.0	LIGHT POLE	743.5	728.5	7
Q1- PT 4	41° 58' 50.657" N	87° 56' 41.933" W	1935810.241	1089840.945	665.9	698.5	698.5	25.0	FILL/CUT	17.0	VEHICULAR CLEARANCE	723.5	715.5	7
Q1- PT 5	41° 58' 50.690" N	87° 56' 45.517" W	1935812.326	1089570.253	666.0	695.3	695.3	30.0	BRIDGE	17.0	VEHICULAR CLEARANCE	725.3	712.3	7
Q3- PT 1	41° 58' 42.675" N	87° 56' 10.442" W	1935013.147	1092223.097	664.9	669.0	669.0	25.0	FILL/CUT	17.0	VEHICULAR CLEARANCE	694.0	686.0	7
Q4- PT 1	41° 58' 55.400" N	87° 56' 11.228" W	1936300.916	1092157.749	663.6	662.4	663.6	25.0	FILL/CUT	17.0	VEHICULAR CLEARANCE	687.4	679.4	7
Q4- PT 2	41° 59' 2.009" N	87° 56' 15.775" W	1936968.345	1091811.266	655.0	662.7	662.7	25.0	FILL/CUT	17.0	VEHICULAR CLEARANCE	687.7	679.7	7
Q4- PT 3	41° 59' 9.197" N	87° 56' 16.329" W	1937695.78	1091766.02	654.2	662.9	662.9	50.0	LIGHTING	35.0	LIGHT POLE	712.9	697.9	7
Q4- PT 4	41° 59' 10.692" N	87° 56' 16.428" W	1937847.088	1091757.858	654.9	662.1	662.1	50.0	LIGHTING	35.0	LIGHT POLE	712.1	697.1	7
Q4- PT 5	41° 59' 17.884" N	87° 56' 16.482" W	1938575.053	1091750.402	695.0	660.3	695.0	50.0	LIGHTING	35.0	LIGHT POLE	710.3	695.3	7
Q4- PT 1A*	41° 58' 55.400" N	87° 56' 11.228" W	1936300.916	1092157.749	663.6	662.4	663.6	25.0	FILL/CUT	17.0	VEHICULAR CLEARANCE	687.4	679.4	7
Q4- PT 2A*	41° 59' 2.009" N	87° 56' 15.775" W	1936968.345	1091811.266	655.0	662.4	662.4	25.0	FILL/CUT	17.0	VEHICULAR CLEARANCE	687.4	679.4	7
Q4- PT 3A*	41° 59' 9.197" N	87° 56' 16.329" W	1937695.78	1091766.02	654.2	666.2	666.2	50.0	LIGHTING	35.0	LIGHT POLE	716.2	701.2	7
Q4- PT 4A*	41° 59' 10.692" N	87° 56' 16.428" W	1937847.088	1091757.858	654.9	667.0	667.0	50.0	LIGHTING	35.0	LIGHT POLE	717.0	702.0	7
Q4- PT 5A*	41° 59' 17.884" N	87° 56' 16.482" W	1938575.053	1091750.402	695.0	670.8	695.0	50.0	LIGHTING	35.0	LIGHT POLE	720.8	705.8	7

\* DENOTES TUNNEL OPTION FOR WEST BYPASS / UNION PACIFIC RAILROAD GRADE SEPARATION

POINT NO.	LONGITUDE / LATITUDE (FT)		IL STATE PLANE (FT)		EXISTING GROUND ELEV.	PROPOSED GROUND ELEV.	MAXIMUM GROUND ELEV.	MAX. EQUIPMENT HEIGHT (CONSTRUCTION)		MAX. EQUIPMENT HEIGHT (PERMANENT)		MAXIMUM ELEV. (CONSTRUCTION)	MAXIMUM ELEV. (PERMANENT)	SHEET NO.
	LATITUDE	LONGITUDE	NORTHING	EASTING	(AMSL)	(AMSL)	(AMSL)	(AGL) (FT)	CONSTR. TYPE	(AGL) (FT)	CONTROLLING EQU.	(AMSL)	(AMSL)	
Q5-PT1	41° 58' 53.441" N	87° 56' 28.663" W	1936096.597	1090841.869	659.5	681.5	681.5	25.0	FILL/CUT	17.0	VEHICULAR CLEARANCE	706.5	698.5	7
SOUTH SECTION														
294 - PT 1	41° 56' 2.740" N	87° 55' 5.140" W	1918847.512	1097233.717	680.8	683.2	683.2	50.0	LIGHTING	35.0	LIGHT POLE	733.2	718.2	12
294 - PT 2	41° 56' 15.440" N	87° 54' 41.639" W	1920141.666	1099003.634	682.4	683.6	683.6	50.0	LIGHTING	35.0	LIGHT POLE	733.6	718.6	12
294 - PT 3	41° 56' 17.875" N	87° 54' 26.934" W	1920393.643	1100113.803	657.9	659.0	659.0	50.0	LIGHTING	35.0	LIGHT POLE	709.0	694.0	13
294 - PT 4	41° 56' 24.412" N	87° 53' 47.381" W	1921070.378	1103099.666	662.9	663.0	663.0	25.0	FILL/CUT	17.0	VEHICULAR CLEARANCE	688.0	680.0	13
294 - PT 5	41° 56' 26.119" N	87° 53' 37.046" W	1921247.21	1103879.878	673.1	673.0	673.1	25.0	FILL/CUT	17.0	VEHICULAR CLEARANCE	698.0	690.0	13
EOWB- PT 100	41° 56' 28.362" N	87° 54' 49.585" W	1921446.771	1098396.699	651.5	686.9	686.9	25.0	FILL/CUT	17.0	VEHICULAR CLEARANCE	711.9	703.9	12
EOWB- PT 101	41° 56' 44.936" N	87° 54' 50.676" W	1923123.937	1098306.016	651.4	706.3	706.3	50.0	MULTI SPAN/LEVEL BRIDGE	35.0	LIGHT POLE	756.3	741.3	11
EOWB- PT 102	41° 56' 50.373" N	87° 54' 53.132" W	1923673.444	1098117.74	675.9	718.4	718.4	50.0	MULTI SPAN/LEVEL BRIDGE	35.0	LIGHT POLE	768.4	753.4	11
EOWB- PT 103	41° 57' 2.710" N	87° 55' 13.061" W	1924914.938	1096605.793	663.2	686.9	686.9	30.0	BRIDGE	17.0	VEHICULAR CLEARANCE	716.9	703.9	11
EOWB- PT 104	41° 57' 4.146" N	87° 55' 22.120" W	1925056.96	1095920.541	663.9	674.6	674.6	50.0	LIGHTING	35.0	LIGHT POLE	724.6	709.6	10
EOWB- PT 105	41° 57' 7.404" N	87° 55' 37.374" W	1925381.302	1094766.373	666.7	667.5	667.5	50.0	LIGHTING	35.0	LIGHT POLE	717.5	702.5	10
EOWB- PT 106	41° 57' 10.946" N	87° 55' 48.293" W	1925735.901	1093939.69	672.1	669.6	672.1	50.0	SIGNING/LIGHTING	35.0	LIGHT POLE	719.6	704.6	10
EOWB- PT 107	41° 57' 16.279" N	87° 55' 57.743" W	1926272.409	1093223.136	670.4	647.8	670.4	100.0	TUNNEL	35.0	LIGHT POLE	747.8	682.8	10
EOWB- PT 108	41° 57' 17.234" N	87° 55' 58.859" W	1926368.645	1093138.312	669.7	645.0	669.7	100.0	TUNNEL	35.0	LIGHT POLE	745.0	680.0	10
EOWB- PT 109	41° 57' 18.967" N	87° 56' 0.618" W	1926543.479	1093004.64	666.5	642.9	666.5	100.0	TUNNEL	35.0	LIGHT POLE	742.9	677.9	10
EOWB- PT 110	41° 57' 25.878" N	87° 56' 6.182" W	1927241.011	1092580.977	661.3	659.4	661.3	50.0	LIGHTING	35.0	LIGHT POLE	709.4	694.4	9
EOWB- PT 111	41° 57' 29.696" N	87° 56' 8.829" W	1927626.542	1092379.21	660.0	671.5	671.5	50.0	LIGHTING	35.0	LIGHT POLE	721.5	706.5	9
EOWB- PT 112	41° 57' 33.989" N	87° 56' 11.384" W	1928060.196	1092184.147	659.9	684.6	684.6	50.0	LIGHTING	35.0	LIGHT POLE	734.6	719.6	9
EOWB- PT 113	41° 57' 37.334" N	87° 56' 12.982" W	1928398.243	1092061.808	660.7	690.2	690.2	30.0	BRIDGE	17.0	VEHICULAR CLEARANCE	720.2	707.2	9
EOWB- PT 114	41° 57' 38.891" N	87° 56' 13.616" W	1928555.686	1092013.18	662.9	690.8	690.8	30.0	BRIDGE	17.0	VEHICULAR CLEARANCE	720.8	707.8	9
EOWB- PT 115	41° 57' 47.061" N	87° 56' 15.871" W	1929381.893	1091838.991	657.8	676.1	676.1	50.0	LIGHTING	35.0	LIGHT POLE	726.1	711.1	9
EOWB- PT 116	41° 57' 49.291" N	87° 56' 16.234" W	1929607.499	1091810.545	658.9	669.8	669.8	50.0	LIGHTING	35.0	LIGHT POLE	719.8	704.8	9
EOWB- PT 117	41° 57' 56.483" N	87° 56' 17.071" W	1930335.202	1091743.993	685.4	662.8	685.4	50.0	LIGHTING	35.0	LIGHT POLE	712.8	697.8	9
EOWB- PT 118	41° 57' 58.651" N	87° 56' 17.224" W	1930554.564	1091731.42	682.8	663.9	682.8	50.0	LIGHTING	35.0	LIGHT POLE	713.9	698.9	9
EOWB- PT 119	41° 58' 1.025" N	87° 56' 17.339" W	1930794.821	1091721.608	690.1	665.1	690.1	50.0	LIGHTING	35.0	LIGHT POLE	715.1	700.1	8
EOWB- PT 120	41° 58' 3.802" N	87° 56' 17.404" W	1931075.89	1091715.37	690.2	666.5	690.2	50.0	LIGHTING	35.0	LIGHT POLE	716.5	701.5	8
EOWB- PT 121	41° 58' 6.200" N	87° 56' 17.401" W	1931318.649	1091714.526	691.8	667.7	691.8	50.0	LIGHTING	35.0	LIGHT POLE	717.7	702.7	8
FRAN-PT1	41° 56' 36.990" N	87° 54' 2.590" W	1922337.687	1101943.885	<b>648.6</b>	648.6	648.6	25.0	FILL/CUT	17.0	VEHICULAR CLEARANCE	673.6	665.6	13
FRAN-PT2	41° 56' 40.497" N	87° 54' 11.830" W	1922689.192	1101243.82	<b>651.2</b>	652.2	652.2	25.0	FILL/CUT	17.0	VEHICULAR CLEARANCE	677.2	669.2	11
FRAN-PT3	41° 56' 42.214" N	87° 54' 16.406" W	1922861.23	1100897.143	<b>651.7</b>	651.7	651.7	25.0	FILL/CUT	17.0	VEHICULAR CLEARANCE	676.7	668.7	11
FRAN-PT4	41° 56' 46.233" N	87° 54' 28.413" W	1923263.58	1099987.72	654.1	654.5	654.5	25.0	FILL/CUT	17.0	VEHICULAR CLEARANCE	679.5	671.5	11
FRAN-PT5	41° 56' 50.203" N	87° 54' 42.277" W	1923660.256	1098938.108	658.3	659.0	659.0	50.0	LIGHTING	35.0	LIGHT POLE	709.0	694.0	11
FRAN-PT6	41° 56' 52.217" N	87° 54' 49.466" W	1923861.447	1098393.863	658.8	659.8	659.8	50.0	LIGHTING	35.0	LIGHT POLE	709.8	694.8	11
IPR-PT1	41° 57' 38.498" N	87° 56' 11.509" W	1928516.639	1092172.591	662.7	663.7	663.7	25.0	FILL/CUT	17.0	VEHICULAR CLEARANCE	688.7	680.7	9
IPR-PT2	41° 57' 35.750" N	87° 56' 4.984" W	1928240.713	1092666.831	672.4	-	672.4	25.0	FILL/CUT	17.0	VEHICULAR CLEARANCE	-	-	9
IPR-PT3	41° 57' 33.105" N	87° 56' 3.361" W	1927973.599	1092790.723	667.2	-	667.2	25.0	FILL/CUT	17.0	VEHICULAR CLEARANCE	-	-	9
IPR-PT4	41° 57' 30.609" N	87° 56' 3.083" W	1927720.966	1092812.893	662.9	-	662.9	25.0	FILL/CUT	17.0	VEHICULAR CLEARANCE	-	-	9
IPR-PT5	41° 57' 20.954" N	87° 55' 54.762" W	1926746.593	1093446.114	666.5	-	666.5	25.0	FILL/CUT	17.0	VEHICULAR CLEARANCE	-	-	9
IPR-PT6	41° 57' 17.968" N	87° 55' 10.051" W	1926460.475	1096825.784	663.0	-	663.0	25.0	FILL/CUT	17.0	VEHICULAR CLEARANCE	-	-	11
IPR-PT7	41° 57' 13.052" N	87° 54' 51.903" W	1925969.513	1098199.406	659.4	-	659.4	25.0	FILL/CUT	17.0	VEHICULAR CLEARANCE	-	-	11
POW-PT1	41° 56' 18.073" N	87° 54' 38.746" W	1920409.247	1099220.944	652.8	654.1	654.1	25.0	FILL/CUT	17.0	VEHICULAR CLEARANCE	679.1	671.1	12
POW-PT2	41° 56' 30.522" N	87° 54' 47.022" W	1921666.312	1098589.283	651.8	651.0	651.8	25.0	FILL/CUT	17.0	VEHICULAR CLEARANCE	676.0	668.0	12
POW-PT3	41° 56' 41.288" N	87° 54' 46.428" W	1922756.338	1098628.856	647.8	647.8	647.8	25.0	FILL/CUT	17.0	VEHICULAR CLEARANCE	672.8	664.8	11
S1-PT1	41° 56' 18.318" N	87° 54' 51.483" W	1920429.32	1098258.233	663.9	707.2	707.2	50.0	MULTI SPAN/LEVEL BRIDGE	35.0	LIGHT POLE	757.2	742.2	12
S1-PT2	41° 56' 40.935" N	87° 54' 50.735" W	1922718.936	1098303.531	651.1	694.9	694.9	50.0	MULTI SPAN/LEVEL BRIDGE	35.0	LIGHT POLE	744.9	729.9	11
S2-PT1	41° 56' 13.299" N	87° 54' 49.959" W	1919921.889	1098375.875	698.2	731.9	731.9	50.0	MULTI SPAN/LEVEL BRIDGE	35.0	LIGHT POLE	781.9	766.9	12
S2-PT2	41° 56' 18.881" N	87° 54' 47.416" W	1920487.864	1098565.342	651.5	720.8	720.8	50.0	MULTI SPAN/LEVEL BRIDGE	35.0	LIGHT POLE	770.8	755.8	12
S2-PT3	41° 56' 25.287" N	87° 54' 47.723" W	1921136.185	1098538.909	654.2	699.7	699.7	50.0	MULTI SPAN/LEVEL BRIDGE	35.0	LIGHT POLE	749.7	734.7	12
S2-PT4	41° 56' 41.763" N	87° 54' 49.275" W	1922803.289	1098413.45	650.4	697.1	697.1	50.0	MULTI SPAN/LEVEL BRIDGE	35.0	LIGHT POLE	747.1	732.1	11
S4-PT1	41° 56' 26.213" N	87° 54' 48.987" W	1921229.458	1098442.918	654.1	689.4	689.4	50.0	LIGHTING	35.0	LIGHT POLE	739.4	724.4	12
TAFT-PT1	41° 57' 4.524" N	87° 54' 53.546" W	1925105.712	1098079.504	677.1	697.9	697.9	50.0	MULTI SPAN/LEVEL BRIDGE	35.0	LIGHT POLE	747.9	732.9	11
TAFT-PT2	41° 57' 10.331" N	87° 54' 58.117" W	1925691.826	1097731.26	660.4	676.6	676.6	25.0	FILL/CUT	17.0	VEHICULAR CLEARANCE	701.6	693.6	11
TAFT-PT3	41° 57' 11.887" N	87° 54' 59.731" W	1925848.695	1097608.52	661.9	668.3	668.3	25.0	FILL/CUT	17.0	VEHICULAR CLEARANCE	693.3	685.3	11
TAFT-PT4	41° 57' 15.723" N	87° 55' 0.568" W	1926236.668	1097543.4	664.6	667.3	667.3	50.0	LIGHTING	35.0	LIGHT POLE	717.3	702.3	11
T2-PT1	41° 56' 29.913" N	87° 54' 47.748" W	1921604.402	1098534.739	651.9	684.3	684.3	50.0	LIGHTING	35.0	LIGHT POLE	734.3	719.3	12
T2-PT2	41° 56' 45.983" N	87° 54' 48.759" W	1923230.698	1098450.394	652.1	653.6	653.6	25.0	FILL/CUT	17.0	VEHICULAR CLEARANCE	678.6	670.6	11
T3-PT1	41° 57' 5.369" N	87° 55' 21.571" W	1925180.937	1095961.434	664.0	670.3	670.3	25.0	FILL/CUT	17.0	VEHICULAR CLEARANCE	695.3	687.3	10
T3-PT2	41° 57' 7.464" N	87° 55' 34.489" W	1925388.381	1094984.37	665.7	664.2	665.7	50.0	LIGHTING	35.0	LIGHT POLE	714.2	699.2	10

\* DENOTES TUNNEL OPTION FOR WEST BYPASS / UNION PACIFIC RAILROAD GRADE SEPARATION



POINT NO.	LONGITUDE / LATITUDE (FT)		IL STATE PLANE (FT)		EXISTING GROUND ELEV.	PROPOSED GROUND ELEV.	MAXIMUM GROUND ELEV.	MAX. EQUIPMENT HEIGHT (CONSTRUCTION)		MAX. EQUIPMENT HEIGHT (PERMANENT)		MAXIMUM ELEV. (CONSTRUCTION)	MAXIMUM ELEV. (PERMANENT)	SHEET NO.
	LATITUDE	LONGITUDE	NORTHING	EASTING	(AMSL)	(AMSL)	(AMSL)	(AGL) (FT)	CONSTR. TYPE	(AGL) (FT)	CONTROLLING EQU.	(AMSL)	(AMSL)	
U1-PT1	41° 57' 25.875" N	87° 56' 7.448" W	1927240.334	1092485.339	660.5	662.0	662.0	50.0	LIGHTING	35.0	LIGHT POLE	712.0	697.0	9
U1-PT2	41° 57' 30.567" N	87° 56' 10.883" W	1927713.986	1092223.564	659.9	673.2	673.2	50.0	LIGHTING	35.0	LIGHT POLE	723.2	708.2	9
U2-PT1	41° 57' 25.880" N	87° 56' 4.918" W	1927241.688	1092676.431	662.5	657.0	662.5	50.0	LIGHTING	35.0	LIGHT POLE	707.0	692.0	9
U2-PT2	41° 57' 31.603" N	87° 56' 8.357" W	1927819.795	1092413.92	660.5	668.2	668.2	25.0	FILL/CUT	17.0	VEHICULAR CLEARANCE	693.2	685.2	9
U3-PT1	41° 57' 49.454" N	87° 56' 14.809" W	1929624.42	1091918.148	659.4	666.5	666.5	50.0	LIGHTING	35.0	LIGHT POLE	716.5	701.5	9
U3-PT2	41° 57' 56.485" N	87° 56' 16.017" W	1930335.766	1091823.607	684.9	661.5	684.9	50.0	LIGHTING	35.0	LIGHT POLE	711.5	696.5	9
U3-PT3	41° 58' 0.351" N	87° 56' 16.318" W	1930726.977	1091799.021	675.8	663.8	675.8	50.0	LIGHTING	35.0	LIGHT POLE	713.8	698.8	9
U4-PT1	41° 57' 49.130" N	87° 56' 17.649" W	1929590.702	1091703.726	660.9	668.1	668.1	50.0	LIGHTING	35.0	LIGHT POLE	718.1	703.1	9
U7-PT1	41° 57' 38.888" N	87° 56' 9.771" W	1928556.67	1092303.719	663.5	664.4	664.4	50.0	LIGHTING	35.0	LIGHT POLE	714.4	699.4	9
U7-PT2	41° 57' 43.750" N	87° 56' 13.196" W	1929047.676	1092042.627	660.6	663.5	663.5	25.0	FILL/CUT	17.0	VEHICULAR CLEARANCE	688.5	680.5	9
WOLF- PT 1	41° 56' 19.661" N	87° 54' 16.128" W	1920578.531	1100929.557	653.8	674.9	674.9	30.0	BRIDGE	17.0	VEHICULAR CLEARANCE	704.9	691.9	13
NORTH SECTION														
ELM-PT1	42° 1' 7.250" N	87° 56' 24.299" W	1949642.713	1091109.222	668.7	685.7	685.7	50.0	LIGHTING	35.0	LIGHT POLE	735.7	720.7	2
ELM-PT2	42° 1' 1.440" N	87° 56' 24.591" W	1949054.537	1091089.92	667.3	686.7	686.7	50.0	LIGHTING	35.0	LIGHT POLE	736.7	721.7	2
ELM-PT3	42° 0' 24.887" N	87° 56' 24.863" W	1945354.382	1091086.407	668.5	668.8	668.8	25.0	FILL/CUT	17.0	VEHICULAR CLEARANCE	693.8	685.8	4
ELM-PT4	42° 0' 0.150" N	87° 56' 24.260" W	1942850.66	1091143.4	670.5	670.5	670.5	25.0	FILL/CUT	17.0	VEHICULAR CLEARANCE	695.5	687.5	4
ELM-PT5	41° 59' 55.631" N	87° 56' 24.155" W	1942393.283	1091153.405	671.6	671.6	671.6	50.0	LIGHTING	35.0	LIGHT POLE	721.6	706.6	5
ELM-PT6	41° 59' 47.468" N	87° 56' 23.966" W	1941566.974	1091171.479	673.6	673.6	673.6	25.0	FILL/CUT	17.0	VEHICULAR CLEARANCE	698.6	690.6	5
ELM-PT7	41° 59' 35.506" N	87° 56' 23.699" W	1940356.305	1091197.243	672.4	672.4	672.4	50.0	LIGHTING	35.0	LIGHT POLE	722.4	707.4	5
ELM-PT8	41° 59' 32.449" N	87° 56' 23.654" W	1940046.809	1091202.009	672.4	672.4	672.4	25.0	FILL/CUT	17.0	VEHICULAR CLEARANCE	697.4	689.4	5
EOWB- PT 135	41° 59' 27.447" N	87° 56' 16.782" W	1939542.914	1091723.313	668.1	681.7	681.7	25.0	FILL/CUT	17.0	VEHICULAR CLEARANCE	706.7	698.7	5
EOWB- PT 136	41° 59' 28.825" N	87° 56' 16.708" W	1939682.42	1091728.241	665.0	684.8	684.8	25.0	FILL/CUT	17.0	VEHICULAR CLEARANCE	709.8	701.8	5
EOWB- PT 137	41° 59' 31.030" N	87° 56' 16.868" W	1939905.565	1091715.149	665.1	689.7	689.7	25.0	FILL/CUT	17.0	VEHICULAR CLEARANCE	714.7	706.7	5
EOWB- PT 138	41° 59' 38.036" N	87° 56' 19.430" W	1940613.808	1091518.436	667.8	705.9	705.9	50.0	MULTI SPAN/LEVEL BRIDGE	35.0	LIGHT POLE	755.9	740.9	5
EOWB- PT 139	41° 59' 43.763" N	87° 56' 21.404" W	1941192.891	1091366.658	675.2	713.6	713.6	25.0	FILL/CUT	17.0	VEHICULAR CLEARANCE	738.6	730.6	5
EOWB- PT 140	41° 59' 45.241" N	87° 56' 21.544" W	1941342.438	1091355.441	673.8	713.1	713.1	25.0	FILL/CUT	17.0	VEHICULAR CLEARANCE	738.1	730.1	5
EOWB- PT 141	41° 59' 56.261" N	87° 56' 17.302" W	1942459.43	1091670.584	678.3	689.9	689.9	50.0	LIGHTING	35.0	LIGHT POLE	739.9	724.9	5
EOWB- PT 142	41° 59' 57.229" N	87° 56' 16.372" W	1942557.735	1091740.334	682.2	687.2	687.2	50.0	LIGHTING	35.0	LIGHT POLE	737.2	722.2	5
EOWB- PT 143	41° 59' 59.593" N	87° 56' 13.582" W	1942797.916	1091949.868	668.3	680.2	680.2	50.0	LIGHTING	35.0	LIGHT POLE	730.2	715.2	4
EOWB- PT 144	42° 0' 1.626" N	87° 56' 11.046" W	1943004.59	1092140.403	668.6	674.4	674.4	50.0	LIGHTING	35.0	LIGHT POLE	724.4	709.4	4
EOWB- PT 145	42° 0' 10.193" N	87° 56' 0.357" W	1943875.609	1092943.404	674.3	664.7	674.3	50.0	LIGHTING	35.0	LIGHT POLE	714.7	699.7	4
EOWB- PT 146	42° 0' 16.656" N	87° 55' 52.293" W	1944532.685	1093549.17	671.6	658.9	671.6	50.0	LIGHTING	35.0	LIGHT POLE	708.9	693.9	4
EOWB- PT 147	42° 0' 18.039" N	87° 55' 50.569" W	1944673.218	1093678.698	668.3	660.0	668.3	50.0	LIGHTING	35.0	LIGHT POLE	710.0	695.0	4
EOWB- PT 148	42° 0' 20.187" N	87° 55' 48.227" W	1944891.537	1093854.51	662.6	661.5	662.6	50.0	LIGHTING	35.0	LIGHT POLE	711.5	696.5	4
EOWB- PT 149	42° 0' 28.083" N	87° 55' 43.445" W	1945692.464	1094211.7	654.7	657.4	657.4	25.0	FILL/CUT	17.0	VEHICULAR CLEARANCE	682.4	674.4	4
EOWB- PT 135A*	41° 59' 27.447" N	87° 56' 16.782" W	1939542.914	1091723.313	668.1	661.9	668.1	25.0	FILL/CUT	17.0	VEHICULAR CLEARANCE	693.1	678.9	5
EOWB- PT 136A*	41° 59' 28.825" N	87° 56' 16.708" W	1939682.42	1091728.241	665.0	658.5	665.0	25.0	FILL/CUT	17.0	VEHICULAR CLEARANCE	690.0	675.5	5
EOWB- PT 137A*	41° 59' 31.030" N	87° 56' 16.868" W	1939905.565	1091715.149	665.1	652.9	665.1	25.0	FILL/CUT	17.0	VEHICULAR CLEARANCE	690.1	669.9	5
EOWB- PT 138A*	41° 59' 38.036" N	87° 56' 19.430" W	1940613.808	1091518.436	667.8	634.7	667.8	100.0	TUNNEL	35.0	LIGHT POLE	767.8	669.7	5
EOWB- PT 139A*	41° 59' 43.763" N	87° 56' 21.404" W	1941192.891	1091366.658	675.2	631.2	675.2	100.0	TUNNEL	35.0	LIGHT POLE	775.2	666.2	5
EOWB- PT 140A*	41° 59' 45.241" N	87° 56' 21.544" W	1941342.438	1091355.441	673.8	633.9	673.8	100.0	TUNNEL	35.0	LIGHT POLE	773.8	668.9	5
EOWB- PT 141A*	41° 59' 56.261" N	87° 56' 17.302" W	1942459.43	1091670.584	678.3	664.5	678.3	50.0	LIGHTING	35.0	LIGHT POLE	728.3	699.5	5
EOWB- PT 142A*	41° 59' 57.229" N	87° 56' 16.372" W	1942557.735	1091740.334	682.2	667.6	682.2	50.0	LIGHTING	35.0	LIGHT POLE	732.2	702.6	5
EOWB- PT 143A*	41° 59' 59.593" N	87° 56' 13.582" W	1942797.916	1091949.868	668.3	673.4	673.4	50.0	LIGHTING	35.0	LIGHT POLE	723.4	708.4	4
EOWB- PT 144A*	42° 0' 1.626" N	87° 56' 11.046" W	1943004.59	1092140.403	668.6	673.3	673.3	50.0	LIGHTING	35.0	LIGHT POLE	723.3	708.3	4
JANE-PT 1	42° 1' 4.777" N	87° 56' 22.879" W	1949392.908	1091217.602	661.8	661.8	661.8	50.0	LIGHTING	35.0	LIGHT POLE	711.8	696.8	2
JANE-PT 2	42° 0' 57.500" N	87° 55' 50.183" W	1948667.808	1093689.021	658.9	661.3	661.3	50.0	LIGHTING	35.0	LIGHT POLE	711.3	696.3	2
JANE-PT 3	42° 0' 49.979" N	87° 55' 21.942" W	1947916.552	1095824.417	671.6	672.3	672.3	50.0	LIGHTING	35.0	LIGHT POLE	722.3	707.3	2
JANE-PT 4	42° 0' 47.463" N	87° 55' 12.499" W	1947665.319	1096538.53	679.5	681.9	681.9	50.0	LIGHTING	35.0	LIGHT POLE	731.9	716.9	3
JANE-PT 5	42° 0' 46.125" N	87° 55' 7.476" W	1947531.686	1096918.372	653.5	683.7	683.7	50.0	LIGHTING	35.0	LIGHT POLE	733.7	718.7	3
JANE-PT 6	42° 0' 41.139" N	87° 54' 48.764" W	1947033.878	1098333.358	653.9	-	653.9	30.0	BRIDGE	17.0	VEHICULAR CLEARANCE	683.9	670.9	3
JANE-PT 7	42° 0' 27.414" N	87° 53' 57.278" W	1945664.016	1102227.103	656.2	-	656.2	25.0	FILL/CUT	17.0	VEHICULAR CLEARANCE	681.2	673.2	3
MPR - PT 1	42° 0' 24.930" N	87° 55' 28.109" W	1945378.779	1095371	661.1	661.1	661.1	25.0	FILL/CUT	17.0	VEHICULAR CLEARANCE	686.1	678.1	4
MPR - PT 2	42° 0' 27.120" N	87° 55' 15.981" W	1945604.833	1096285.571	651.6	654.8	654.8	25.0	FILL/CUT	17.0	VEHICULAR CLEARANCE	679.8	671.8	3
MPR - PT 3	42° 0' 27.120" N	87° 55' 15.981" W	1945604.833	1096285.571	651.6	654.8	654.8	25.0	FILL/CUT	17.0	VEHICULAR CLEARANCE	679.8	671.8	3
PRATT-PT 1	41° 59' 54.816" N	87° 56' 29.203" W	1942308.954	1090772.623	669.7	669.7	669.7	25.0	FILL/CUT	17.0	VEHICULAR CLEARANCE	694.7	686.7	5
TOUHY - PT 1	42° 0' 29.752" N	87° 55' 43.242" W	1945861.442	1094226.228	654.1	683.3	683.3	50.0	LIGHTING	35.0	LIGHT POLE	733.3	718.3	4
TOUHY - PT 2	42° 0' 29.910" N	87° 55' 36.716" W	1945879.791	1094718.885	652.2	689.2	689.2	50.0	LIGHTING	35.0	LIGHT POLE	739.2	724.2	4
TOUHY - PT 3	42° 0' 30.072" N	87° 55' 30.003" W	1945898.662	1095225.535	656.9	691.6	691.6	30.0	BRIDGE	17.0	VEHICULAR CLEARANCE	721.6	708.6	4
TOUHY - PT 4	42° 0' 30.325" N	87° 55' 19.589" W	1945927.942	1096011.665	652.2	667.1	667.1	25.0	FILL/CUT	17.0	VEHICULAR CLEARANCE	692.1	684.1	4
TOUHY - PT 5	42° 0' 30.726" N	87° 55' 6.177" W	1945973.466	1097023.947	648.1	650.5	650.5	25.0	FILL/CUT	17.0	VEHICULAR CLEARANCE	675.5	667.5	3

\* DENOTES TUNNEL OPTION FOR WEST BYPASS / UNION PACIFIC RAILROAD GRADE SEPARATION

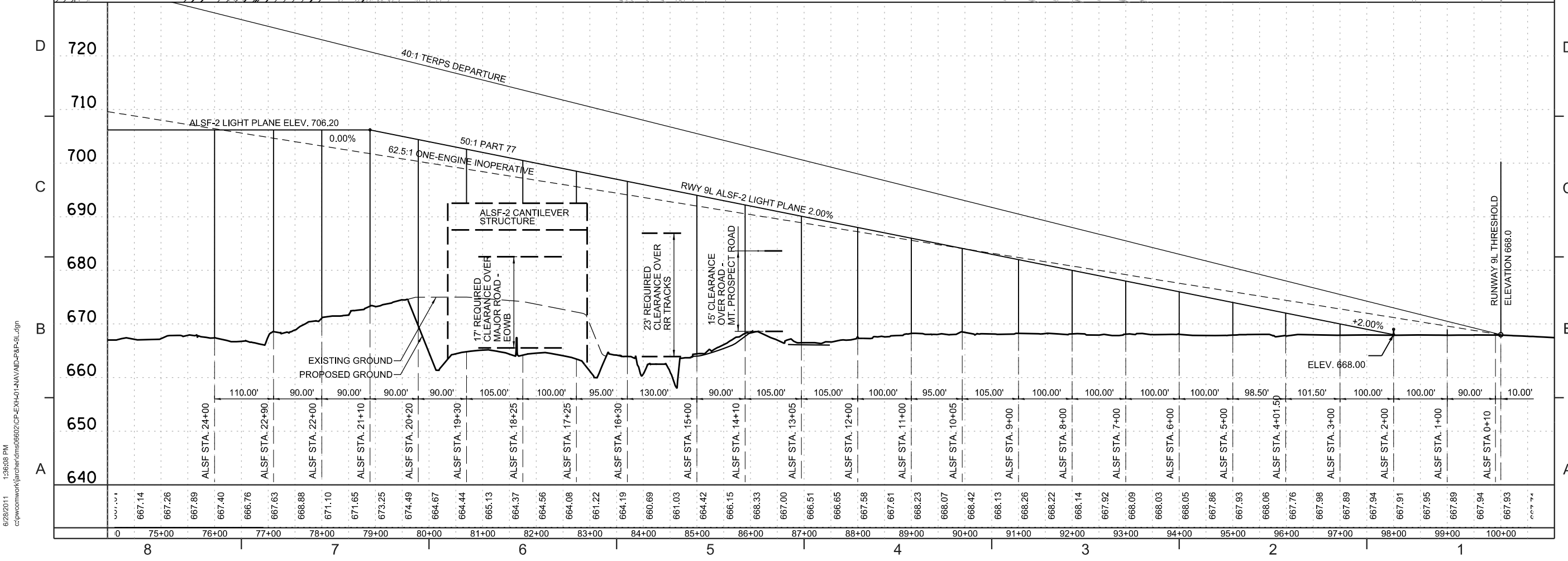
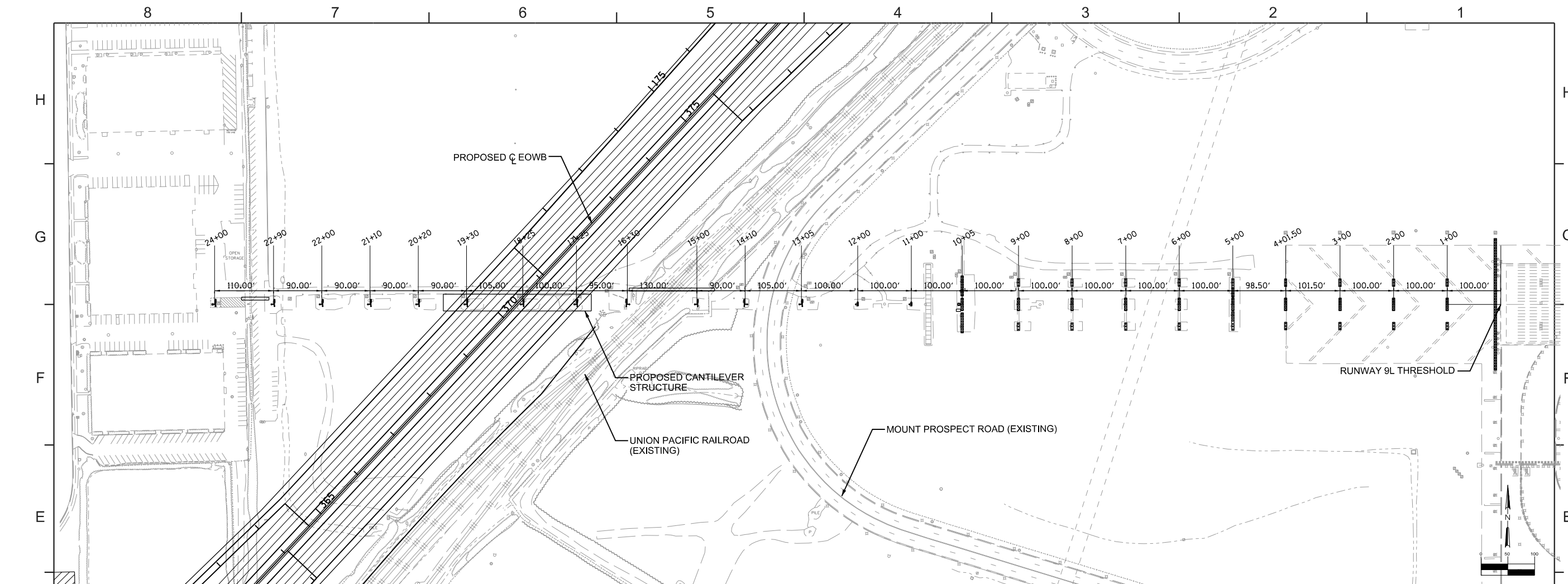
POINT NO.	LONGITUDE / LATITUDE (FT)		IL STATE PLANE (FT)		EXISTING GROUND ELEV.	PROPOSED GROUND ELEV.	MAXIMUM GROUND ELEV.	MAX. EQUIPMENT HEIGHT (CONSTRUCTION)		MAX. EQUIPMENT HEIGHT (PERMANENT)		MAXIMUM ELEV. (CONSTRUCTION)	MAXIMUM ELEV. (PERMANENT)	SHEET NO.
	LATITUDE	LONGITUDE	NORTHING	EASTING	(AMSL)	(AMSL)	(AMSL)	(AGL) (FT)	CONSTR. TYPE	(AGL) (FT)	CONTROLLING EQU.	(AMSL)	(AMSL)	
V3-PT1	41° 59' 36.698" N	87° 56' 21.816" W	1940477.561	1091338.823	671.1	670.0	671.1	25.0	FILL/CUT	17.0	VEHICULAR CLEARANCE	695.0	687.0	5
V3-PT2	41° 59' 43.401" N	87° 56' 19.386" W	1941156.978	1091519.24	673.3	689.1	689.1	25.0	FILL/CUT	17.0	VEHICULAR CLEARANCE	714.1	706.1	5
V3-PT3	41° 59' 49.716" N	87° 56' 18.839" W	1941796.359	1091557.609	669.4	702.9	702.9	30.0	BRIDGE	17.0	VEHICULAR CLEARANCE	732.9	719.9	5
V3-PT4	41° 59' 55.279" N	87° 56' 16.494" W	1942360.241	1091732.01	673.7	686.7	686.7	50.0	LIGHTING	35.0	LIGHT POLE	736.7	721.7	5
V3-PT5	41° 59' 57.600" N	87° 56' 14.316" W	1942595.951	1091895.379	682.0	680.6	682.0	50.0	LIGHTING	35.0	LIGHT POLE	730.6	715.6	5
V3-PT6	42° 0' 1.830" N	87° 56' 9.271" W	1943025.901	1092274.31	666.3	672.1	672.1	50.0	LIGHTING	35.0	LIGHT POLE	722.1	707.1	4
V3-PT7	42° 0' 5.148" N	87° 56' 5.295" W	1943363.16	1092572.982	675.6	668.7	675.6	50.0	LIGHTING	35.0	LIGHT POLE	718.7	703.7	4
V3-PT1A*	41° 59' 36.698" N	87° 56' 21.816" W	1940477.561	1091338.823	671.1	670.6	671.1	25.0	FILL/CUT	17.0	VEHICULAR CLEARANCE	696.1	687.6	5
V3-PT2A*	41° 59' 43.401" N	87° 56' 19.386" W	1941156.978	1091519.24	673.3	666.3	673.3	25.0	FILL/CUT	17.0	VEHICULAR CLEARANCE	698.3	683.3	5
V3-PT3A*	41° 59' 49.716" N	87° 56' 18.839" W	1941796.359	1091557.609	669.4	647.0	669.4	100.0	TUNNEL	35.0	LIGHT POLE	769.4	682.0	5
V3-PT4A*	41° 59' 55.279" N	87° 56' 16.494" W	1942360.241	1091732.01	673.7	658.4	673.7	50.0	LIGHTING	35.0	LIGHT POLE	723.7	693.4	5
V3-PT5A*	41° 59' 57.600" N	87° 56' 14.316" W	1942595.951	1091895.379	682.0	666.5	682.0	50.0	LIGHTING	35.0	LIGHT POLE	732.0	701.5	5
V3-PT6A*	42° 0' 1.830" N	87° 56' 9.271" W	1943025.901	1092274.31	666.3	671.8	671.8	50.0	LIGHTING	35.0	LIGHT POLE	721.8	706.8	4
V3-PT7A*	42° 0' 5.148" N	87° 56' 5.295" W	1943363.16	1092572.982	675.6	668.7	675.6	50.0	LIGHTING	35.0	LIGHT POLE	725.6	703.7	4
V4-PT1	41° 59' 55.783" N	87° 56' 20.108" W	1942409.986	1091458.944	672.3	670.3	672.3	25.0	FILL/CUT	17.0	VEHICULAR CLEARANCE	695.3	687.3	5
V4-PT2	41° 59' 59.841" N	87° 56' 15.258" W	1942822.482	1091823.245	667.6	679.2	679.2	25.0	FILL/CUT	17.0	VEHICULAR CLEARANCE	704.2	696.2	4
V4-PT1A*	41° 59' 55.783" N	87° 56' 20.108" W	1942409.986	1091458.944	672.3	667.2	672.3	25.0	FILL/CUT	17.0	VEHICULAR CLEARANCE	697.3	684.2	5
V4-PT2A*	41° 59' 59.841" N	87° 56' 15.258" W	1942822.482	1091823.245	667.6	670.9	670.9	25.0	FILL/CUT	17.0	VEHICULAR CLEARANCE	695.9	687.9	4
W1-PT1	42° 0' 18.311" N	87° 55' 51.933" W	1944700.316	1093575.57	669.3	656.9	669.3	50.0	LIGHTING	35.0	LIGHT POLE	706.9	691.9	4
W1-PT2	42° 0' 28.017" N	87° 55' 47.579" W	1945684.355	1093899.661	655.0	673.0	673.0	25.0	FILL/CUT	17.0	VEHICULAR CLEARANCE	698.0	690.0	4
W2-PT1	42° 0' 13.577" N	87° 55' 54.778" W	1944220.111	1093363.013	672.1	660.3	672.1	50.0	LIGHTING	35.0	LIGHT POLE	710.3	695.3	4
W2-PT2	42° 0' 16.486" N	87° 55' 50.767" W	1944515.964	1093664.451	670.8	660.4	670.8	50.0	LIGHTING	35.0	LIGHT POLE	710.4	695.4	4
W2-PT3	42° 0' 17.735" N	87° 55' 49.046" W	1944642.961	1093793.845	664.6	663.0	664.6	50.0	LIGHTING	35.0	LIGHT POLE	713.0	698.0	4
W2-PT4	42° 0' 23.601" N	87° 55' 41.509" W	1945239.435	1094360.017	655.8	675.2	675.2	25.0	FILL/CUT	17.0	VEHICULAR CLEARANCE	700.2	692.2	4
W2-PT5	42° 0' 26.153" N	87° 55' 39.747" W	1945498.425	1094491.81	654.0	680.8	680.8	25.0	FILL/CUT	17.0	VEHICULAR CLEARANCE	705.8	697.8	4
X1-PT1	42° 0' 35.667" N	87° 55' 43.690" W	1946460.078	1094189.603	654.4	666.6	666.6	50.0	LIGHTING	35.0	LIGHT POLE	716.6	701.6	4
X1-PT2	42° 0' 49.059" N	87° 55' 45.488" W	1947815.031	1094047.443	592.2	693.8	693.8	50.0	MULTI SPAN/LEVEL BRIDGE	35.0		743.8	728.8	2
X2-PT1	42° 0' 36.777" N	87° 55' 41.372" W	1946573.287	1094364.077	652.2	669.3	669.3	50.0	LIGHTING	35.0	LIGHT POLE	719.3	704.3	4
X2-PT2	42° 0' 45.274" N	87° 55' 39.500" W	1947433.986	1094501.336	646.9	681.6	681.6	50.0	MULTI SPAN/LEVEL BRIDGE	35.0		731.6	716.6	2
X2-PT3	42° 0' 48.828" N	87° 55' 21.196" W	1947800.319	1095881.332	666.1	672.2	672.2	50.0	LIGHTING	35.0	LIGHT POLE	722.2	707.2	2
X5 - PT 1	42° 0' 52.579" N	87° 55' 40.683" W	1948172.979	1094408.511	673.1	710.9	710.9	50.0	MULTI SPAN/LEVEL BRIDGE	35.0	LIGHT POLE	760.9	745.9	2
X5 - PT 2	42° 0' 51.996" N	87° 55' 23.599" W	1948120.158	1095698.383	654.9	670.9	670.9	25.0	FILL/CUT	17.0	VEHICULAR CLEARANCE	695.9	687.9	2
X8 - PT 1	42° 0' 48.855" N	87° 55' 40.449" W	1947796.118	1094427.971	648.8	682.8	682.8	50.0	MULTI SPAN/LEVEL BRIDGE	35.0	LIGHT POLE	732.8	717.8	2
Y3-PT 1	42° 1' 0.969" N	87° 56' 13.293" W	1949010.754	1091942.941	657.4	682.3	682.3	30.0	BRIDGE	17.0	VEHICULAR CLEARANCE	712.3	699.3	2
Y5-PT 1	42° 1' 1.032" N	87° 56' 19.393" W	1949015.024	1091482.463	657.0	684.7	684.7	25.0	FILL/CUT	17.0	VEHICULAR CLEARANCE	709.7	701.7	2
Y9-PT 1	42° 1' 1.049" N	87° 56' 21.904" W	1949015.826	1091292.934	659.9	686.1	686.1	50.0	LIGHTING	35.0	LIGHT POLE	736.1	721.1	2
WEST SECTION														
A2 - PT 1	41° 59' 35.805" N	88° 7' 14.723" W	1940212.613	1042037.252	804.9	804.7	804.9	25.0	FILL/CUT	17.0	VEHICULAR CLEARANCE	829.7	821.7	14
A3 - PT 1	41° 59' 47.252" N	88° 6' 43.966" W	1941377.218	1044356.713	817.3	819.3	819.3	50.0	LIGHTING	35.0	LIGHT POLE	869.3	854.3	14
A3 - PT 2	41° 59' 48.153" N	88° 6' 34.095" W	1941470.33	1045101.795	801.2	822.1	822.1	50.0	LIGHTING	35.0	LIGHT POLE	872.1	857.1	14
A3 - PT 3	41° 59' 48.839" N	88° 6' 22.281" W	1941542.153	1045993.723	817.0	817.9	817.9	50.0	LIGHTING	35.0	LIGHT POLE	867.9	852.9	15
B1 - PT 1	41° 59' 36.830" N	88° 7' 19.802" W	1940315.379	1041653.411	830.5	837.7	837.7	30.0	BRIDGE	17.0	VEHICULAR CLEARANCE	867.7	854.7	14
B1 - PT 2	41° 59' 45.396" N	88° 7' 5.198" W	1941185.276	1042754.021	840.6	841.4	841.4	25.0	FILL/CUT	17.0	VEHICULAR CLEARANCE	866.4	858.4	14
B2 - PT 1	41° 59' 19.087" N	88° 7' 19.647" W	1938519.435	1041669.575	830.3	830.3	830.3	25.0	FILL/CUT	17.0	VEHICULAR CLEARANCE	855.3	847.3	14
B2 - PT 2	41° 59' 32.800" N	88° 7' 18.055" W	1939907.826	1041786.389	821.0	827.1	827.1	30.0	BRIDGE	17.0	VEHICULAR CLEARANCE	857.1	844.1	14
B2 - PT 3	41° 59' 36.036" N	88° 7' 15.866" W	1940235.747	1041950.842	806.5	822.6	822.6	50.0	LIGHTING	35.0	LIGHT POLE	872.6	857.6	14
B2 - PT 4	41° 59' 41.025" N	88° 7' 9.479" W	1940741.982	1042431.841	810.2	831.1	831.1	50.0	LIGHTING	35.0	LIGHT POLE	881.1	866.1	14
B2 - PT 5	41° 59' 44.892" N	88° 7' 1.461" W	1941134.925	1043036.321	835.0	835.8	835.8	50.0	LIGHTING	35.0	LIGHT POLE	885.8	870.8	14
C3 - PT 1	41° 59' 50.897" N	88° 5' 30.234" W	1941761.149	1049923.058	800.2	819.4	819.4	50.0	LIGHTING	35.0	LIGHT POLE	869.4	854.4	15
D2 - PT 1	41° 59' 45.278" N	88° 5' 6.023" W	1941197.691	1051752.758	801.2	801.6	801.6	50.0	LIGHTING	35.0	LIGHT POLE	851.6	836.6	16
D2 - PT 2	41° 59' 40.316" N	88° 4' 56.153" W	1940697.57	1052499.519	789.4	788.9	789.4	50.0	LIGHTING	35.0	LIGHT POLE	838.9	823.9	16
D2 - PT 3	41° 59' 38.426" N	88° 4' 51.503" W	1940507.242	1052851.236	792.8	793.2	793.2	50.0	LIGHTING	35.0	LIGHT POLE	843.2	828.2	16
D3 - PT 1	41° 59' 32.557" N	88° 4' 34.056" W	1939917.072	1054170.414	763.7	765.3	765.3	50.0	LIGHTING	35.0	LIGHT POLE	815.3	800.3	16
D3 - PT 2	41° 59' 29.648" N	88° 4' 18.381" W	1939626.213	1055354.967	752.9	756.7	756.7	50.0	LIGHTING	35.0	LIGHT POLE	806.7	791.7	16

\* DENOTES TUNNEL OPTION FOR WEST BYPASS / UNION PACIFIC RAILROAD GRADE SEPARATION

POINT NO.	LONGITUDE / LATITUDE (FT)		IL STATE PLANE (FT)		EXISTING GROUND ELEV.	PROPOSED GROUND ELEV.	MAXIMUM GROUND ELEV.	MAX. EQUIPMENT HEIGHT (CONSTRUCTION)		MAX. EQUIPMENT HEIGHT (PERMANENT)		MAXIMUM ELEV. (CONSTRUCTION)	MAXIMUM ELEV. (PERMANENT)	SHEET NO.
	LATITUDE	LONGITUDE	NORTHING	EASTING	(AMSL)	(AMSL)	(AMSL)	(AGL) (FT)	CONSTR. TYPE	(AGL) (FT)	CONTROLLING EQU.	(AMSL)	(AMSL)	
EOWB - PT 200	41° 59' 37.387" N	88° 7' 16.520" W	1940372.443	1041901.15	815.7	820.2	820.2	50.0	LIGHTING	35.0	LIGHT POLE	870.2	855.2	14
EOWB - PT 201	41° 59' 44.259" N	88° 7' 5.306" W	1941070.14	1042746.128	835.7	838.4	838.4	50.0	LIGHTING	35.0	LIGHT POLE	888.4	873.4	14
EOWB - PT 202	41° 59' 46.448" N	88° 6' 55.456" W	1941293.619	1043489.366	810.2	833.3	833.3	30.0	BRIDGE	17.0	VEHICULAR CLEARANCE	863.3	850.3	14
EOWB - PT 203	41° 59' 49.102" N	88° 6' 34.095" W	1941566.382	1045101.567	801.8	822.4	822.4	50.0	LIGHTING	35.0	LIGHT POLE	872.4	857.4	14
EOWB - PT 204	41° 59' 49.528" N	88° 6' 6.286" W	1941615.118	1047201.23	803.2	824.5	824.5	50.0	LIGHTING	35.0	LIGHT POLE	874.5	859.5	15
EOWB - PT 205	41° 59' 51.692" N	88° 5' 30.224" W	1941841.681	1049923.545	800.3	820.8	820.8	50.0	SIGNING/LIGHTING	35.0	LIGHT POLE	870.8	855.8	15
EOWB - PT 206	41° 59' 50.357" N	88° 5' 24.107" W	1941707.871	1050385.799	798.5	827.4	827.4	30.0	BRIDGE	17.0	VEHICULAR CLEARANCE	857.4	844.4	15
FRONT - PT 100	41° 59' 46.690" N	88° 6' 44.170" W	1941320.236	1044341.508	812.0	814.9	814.9	25.0	FILL/CUT	17.0	VEHICULAR CLEARANCE	839.9	831.9	14
IPR - PT 100	41° 59' 41.811" N	88° 6' 40.652" W	1940827.1	1044608.368	796.2	796.2	796.2	25.0	FILL/CUT	17.0	VEHICULAR CLEARANCE	821.2	813.2	14
RODEN - PT 1	41° 59' 43.336" N	88° 6' 34.365" W	1940982.646	1045082.706	798.3	798.2	798.3	25.0	FILL/CUT	17.0	VEHICULAR CLEARANCE	823.2	815.2	14
ROSE - PT 1	41° 59' 33.628" N	88° 4' 48.783" W	1940022.231	1053058.042	793.4	793.4	793.4	25.0	FILL/CUT	17.0	VEHICULAR CLEARANCE	818.4	810.4	16
ROSE - PT 2	41° 59' 38.368" N	88° 4' 48.731" W	1940502.043	1053060.503	796.0	796.4	796.4	25.0	FILL/CUT	17.0	VEHICULAR CLEARANCE	821.4	813.4	61
SPRING - PT 1	41° 59' 36.102" N	88° 7' 9.253" W	1940243.69	1042450.167	816.2	816.2	816.2	25.0	FILL/CUT	17.0	VEHICULAR CLEARANCE	841.2	833.2	14
WRIGHT - PT 1	41° 59' 46.656" N	88° 6' 6.329" W	1941324.389	1047198.747	802.9	801.6	802.9	25.0	FILL/CUT	17.0	VEHICULAR CLEARANCE	826.6	818.6	15

\* DENOTES TUNNEL OPTION FOR WEST BYPASS / UNION PACIFIC RAILROAD GRADE SEPARATION





**ELGIN O'HARE WEST BYPASS**  
 communities. opportunities. solutions.



APPROVED AS WORKING PLAN BY:


REV	DATE	DESCRIPTION

PROJECT NAME:

SHEET TITLE:  
**RW 9L ALSF PLAN & PROFILE**

DESIGNED:      DRAWN:      CHECKED:

PROJECT NO.:  
 DATE: 06/06/2011

SHEET NO.	REVISION

**EXHIBIT 1**

6/28/2011 1:36:08 PM  
 c:\pwworking\jarcher\dms06602\CP-EXH-01-NAV\AID-P&P-9L.dgn

















