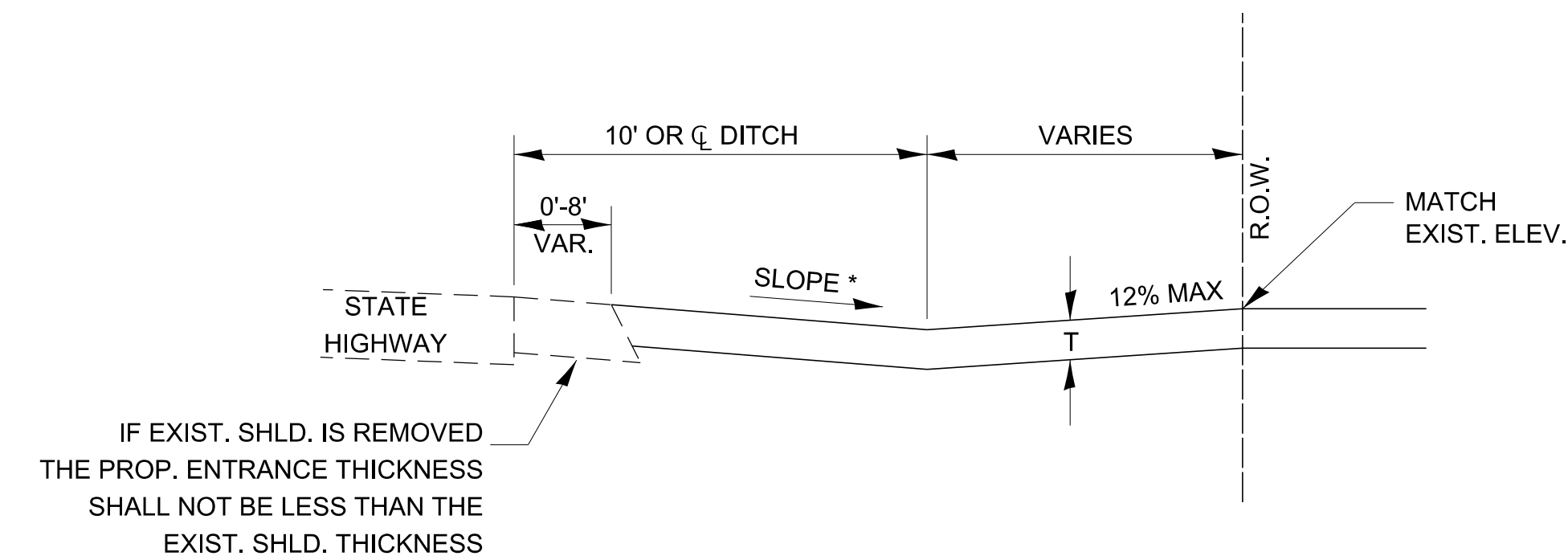


**TYPICAL NONCOMMERCIAL - RURAL  
(PRIVATE ENTRANCE)**

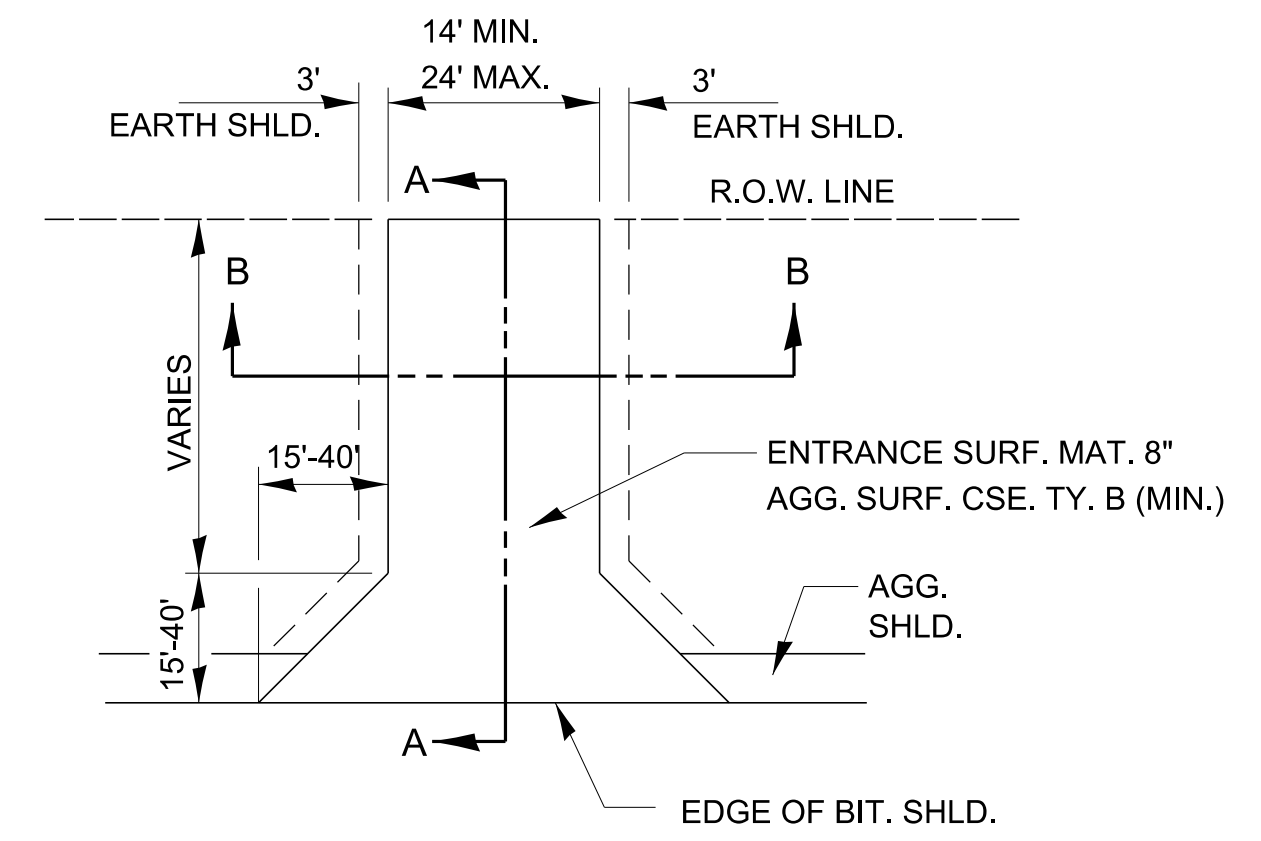


**SECTION A-A**

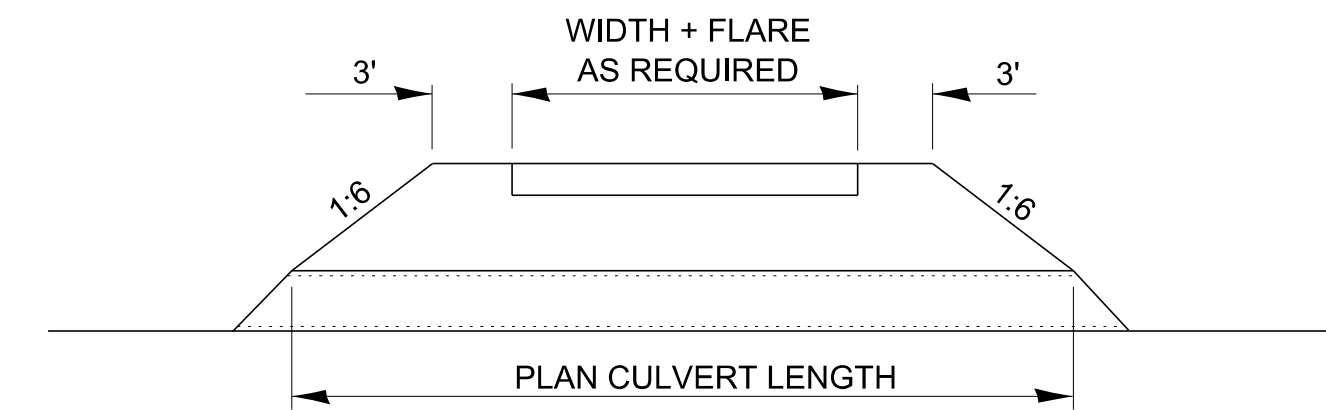
\* SLOPE AWAY FROM HIGHWAY SURFACE AT 1.5% MINIMUM TO 8% MAXIMUM FOR A DISTANCE OF 10' OR TO CENTERLINE OF DITCH; 12% MAXIMUM BEYOND TO RIGHT OF WAY LINE.

**DESIGNER NOTES:**

1. ALL DRIVEWAYS SHALL BE SURFACED FROM THE EDGE OF THE HIGHWAY PAVEMENT TO THE RIGHT OF WAY LINE.
2. TYPICAL FOR NON-COMMERCIAL-RURAL APPLIES TO NON-COMMERCIAL-URBAN WHEN NO CURB & GUTTER IS PRESENT. EXCEPT FINAL SURFACE MUST BE HMA OR PCC PAVEMENT.
3. INSTALL MAILBOX TURNOUT IF MAILBOX DELIVERY PER STATE HIGHWAY STANDARD 406201 AND D3 DETAIL 406-1.
4. FIELD ENTRANCE WIDTH CAN BE INCREASED TO 30' FOR LARGE FARM EQUIPMENT ENTRANCES.



**TYPICAL NONCOMMERCIAL - RURAL  
(FIELD ENTRANCE)**



**SECTION B-B**

**STATE OF ILLINOIS  
DEPARTMENT OF TRANSPORTATION**

400-1

MODEL: dlet 3, details  
FILE NAME: p:\illinois\paw.bentley.com\paw\DOT\Documents\DOT Offices\District 3\Projects\3-Darcy Details\03 Detail Revisions 2023\400-199 SURF CSE PAVT REHAB & SHLD.dgn

USER NAME = Anthony.Grunstad	DESIGNED -	REVISED -
PLOT SCALE = 50.000' / in.	DRAWN -	REVISED -
PLOT DATE = 9/26/23	CHECKED -	REVISED -
	DATE -	REVISED -

SCALE:	SHEET	OF	SHEETS	STA.	TO	STA.
--------	-------	----	--------	------	----	------

F.A. RTE.	SECTION	COUNTY	TOTAL SHEETS	SHEET NO.
CONTRACT NO.				
ILLINOIS FED. AID PROJECT				