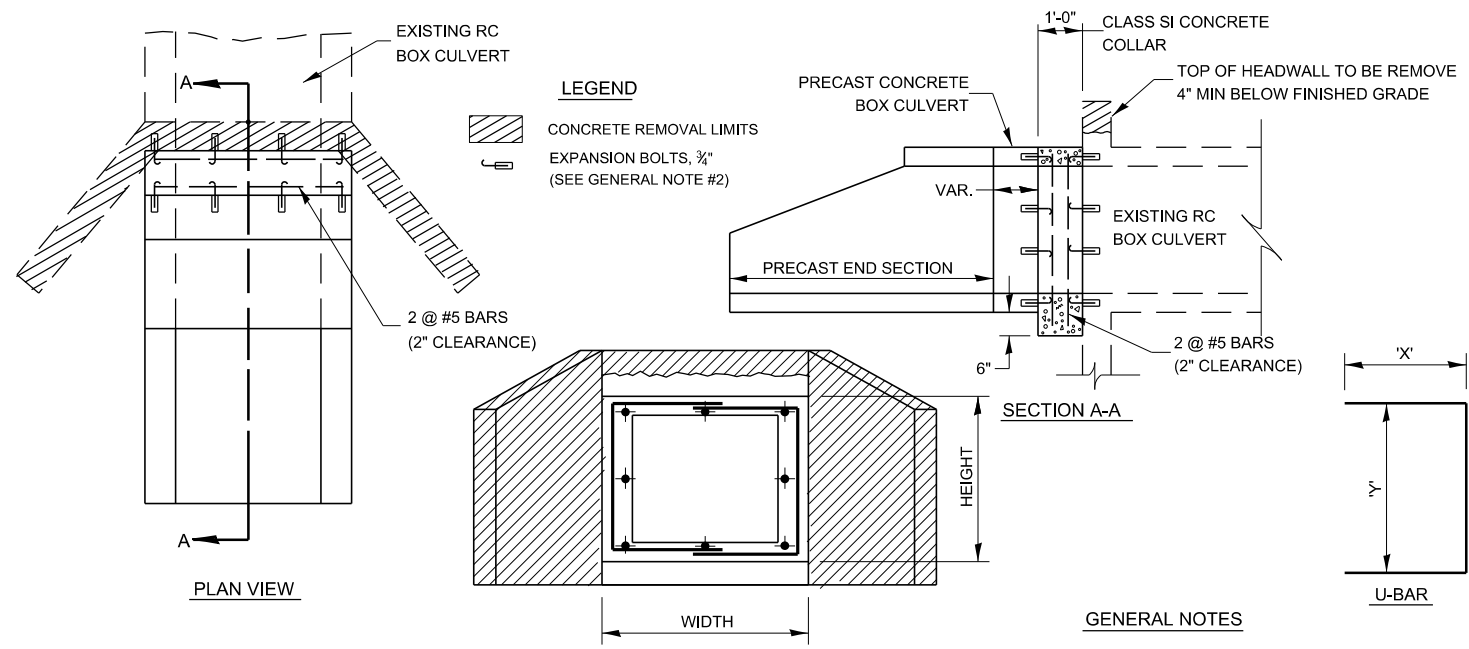


MODEL.dwg 3 14 11 16  
 FILE NAME: p:\illinois\paw\_bentley.com\PI\DOT\Documents\DOT\_Offices\DH\dtr\_3\Projects\Carry\_Detail\03\_Detail\_Revision\2023\500-599\_STRUCTURES.dgn



LOCATION	EXISTING CULVERT SIZE FT x FT	PRECAST CULV. EXTENSION IN	U-BAR		CONC COLLAR CU YD	REINFORCEMENT BARS POUND	3/8" DIA EXPANSION BOLTS EACH
			'X' IN	'Y' IN			

- GENERAL NOTES**
- 1.) CLASS SI CONCRETE SHALL BE USED THROUGHOUT. THE INSIDE DIMENSIONS OF THE CLASS SI CONCRETE COLLAR SHALL BE THE SAME AS THE NEW PRECAST CONCRETE BOX CULVERT.
  - 2.) EXPANSION BOLTS SHALL CONSIST OF SELF DRILLING EXPANSION SHIELDS AND 3/8" HOOKED BOLTS. HOOKED BOLTS SHALL EXTEND A MINIMUM OF 9" INTO NEW CONCRETE. BOLTS SHALL BE PLACED IN EACH CORNER AND AT 18" MAXIMUM CENTERS. MINIMUM CERTIFIED PROOF LOADING = 4,080 LBS.

**COLLAR DETAIL (PRECAST BOX CULVERT EXTENSION OF BOX CULVERT)**

540-6

USER NAME = Anthony.Grunstad	DESIGNED -	REVISED -
PLOT SCALE = 100,000 ' / in.	CHECKED -	REVISED -
PLOT DATE = 9/27/23	DATE -	REVISED -

**STATE OF ILLINOIS  
DEPARTMENT OF TRANSPORTATION**

SCALE:	SHEET	OF	SHEETS	STA.	TO	STA.
--------	-------	----	--------	------	----	------

F.A. RTE.	SECTION	COUNTY	TOTAL SHEETS	SHEET NO.
CONTRACT NO.			ILLINOIS FED. AID PROJECT	