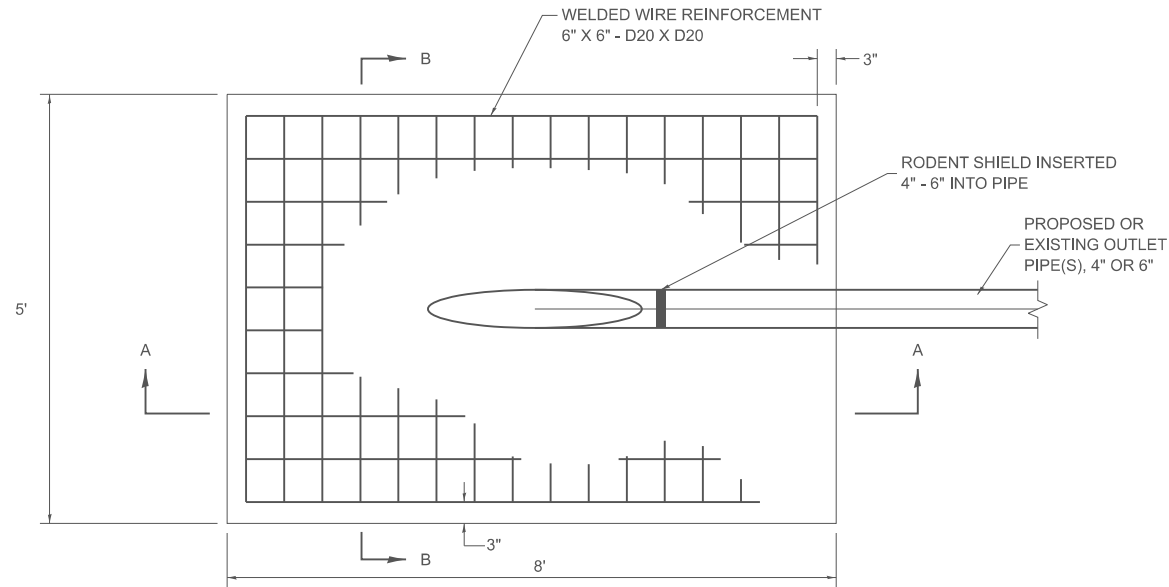
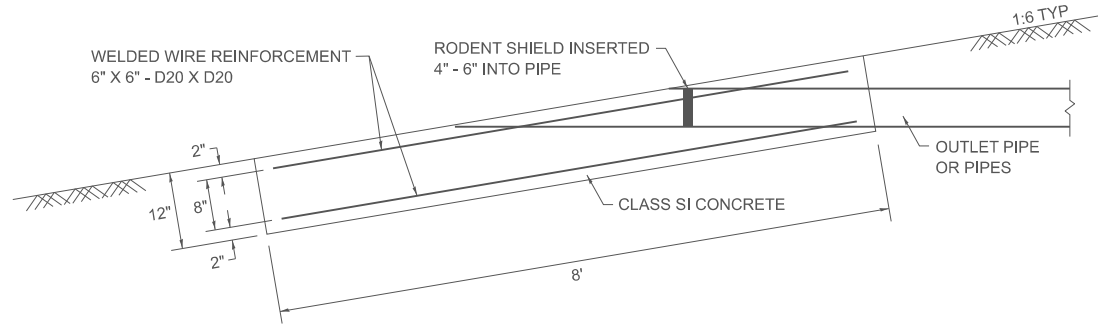


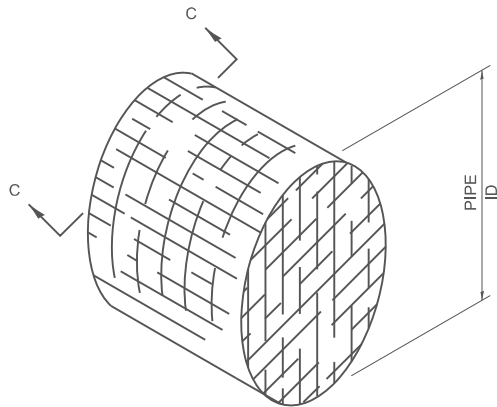
MODEL: SHT_PLAN
FILE NAME: C:\Bentley\CONNECT101\Organization-Civil\DOT_Standards\Civil\DOT_Sheets.cad



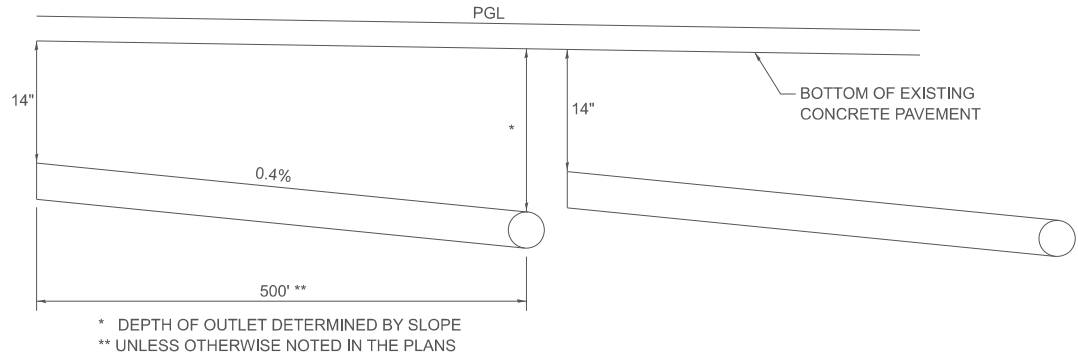
PLAN VIEW



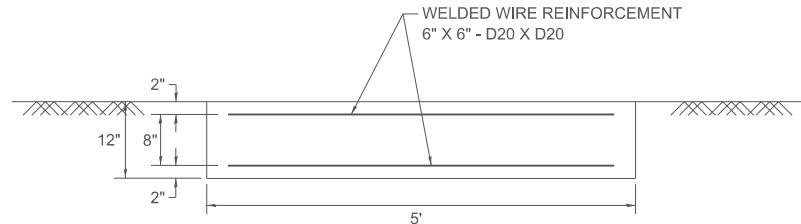
SECTION A-A



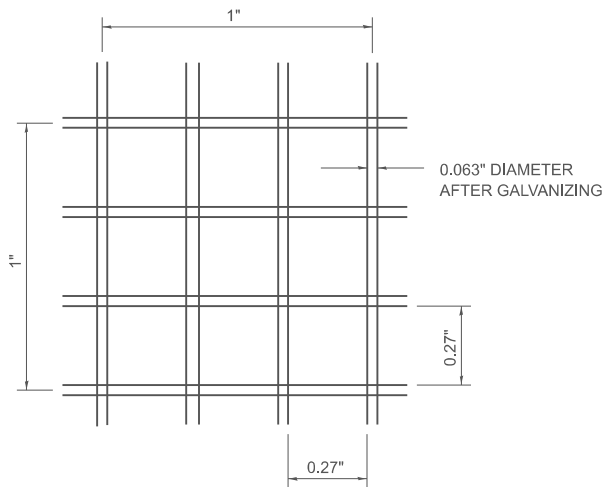
DETAIL OF RODENT SHIELD



PIPE UNDERDRAIN DETAIL
(USE WHEN PGL IS LESS THAN 0.4%)



SECTION B-B



SECTION C-C

NOTES

THE OUTLET PIPE OR PIPES SHALL BE LOCATED AS CLOSE AS POSSIBLE TO THE CENTER OF THE OUTLET PROTECTOR.

THE LAST 10' OF OUTLET PIPE SHALL BE SCHEDULE 40 PVC ACCORDING TO ARTICLE 1040.03 OF THE STANDARD SPECIFICATIONS.

THE REINFORCEMENT WIRE MAY BE CUT TO ACCOMODATE PIPE.

CUT OUTLET PIPE ON A BEVEL TO MATCH FINISHED SURFACE OF SURROUNDING PCC.

SEEDING CLASS 2 SHALL BE CONSIDERED INCLUDED IN THE COST OF PAY ITEMS.

OUTLET PROTECTOR BILL OF MATERIALS

ITEM	UNIT	QUANTITY (EACH OUTLET PROTECTOR)
CLASS SI CONCRETE (MISCELLANEOUS)	CU YD	1.5
WELDED WIRE REINFORCEMENT	SQ FT	67.5

601-7

USER NAME = Eric.Thomas	DESIGNED -	REVISED -
	DRAWN -	REVISED -
	CHECKED -	REVISED -
PLOT DATE = 12/7/2022	DATE -	REVISED -

STATE OF ILLINOIS
DEPARTMENT OF TRANSPORTATION

CONCRETE HEADWALLS FOR PIPE UNDERDRAIN (SPECIAL)

SCALE: SHEET OF SHEETS STA. TO STA.

F.A. RTE.	SECTION	COUNTY	TOTAL SHEETS	SHEET NO.
CONTRACT NO.				
ILLINOIS FED. AID PROJECT				