

LAND SECTION MARKERS

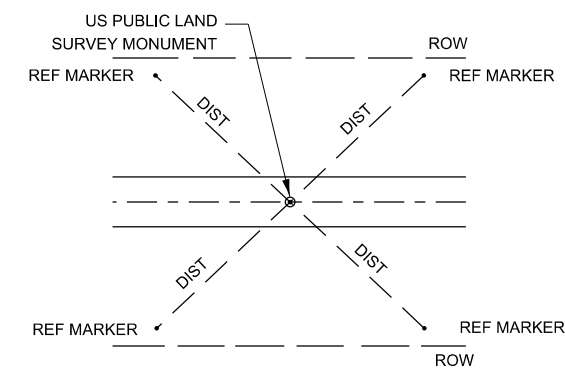
NOTES

PERMANENT SURVEY MARKERS, OF THE TYPE SPECIFIED

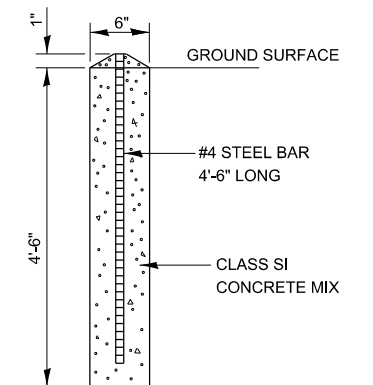
SHALL BE PAID FOR AT THE CONTRACT UNIT PRICE, EACH, WHICH WILL BE PAYMENT IN FULL FOR FURNISHING, INSTALLING AND MARKING SAID MARKERS.

LAND SECTION MARKERS

SHALL BE PAID FOR AT THE CONTRACT UNIT PRICE, EACH, WHICH WILL BE PAYMENT IN FULL FOR SETTING TIE POINTS, SETTING FOUR CONCRETE REFERENCE MARKERS, PREPARING MONUMENT RECORDS, RECORDING AT COUNTY RECORDER'S OFFICE AND PROVIDING A COPY TO THE DISTRICT OFFICE.



PLAN



SECTION

CONCRETE REFERENCE MARKER

667-1

MODEL.dwg 3 14/11/16
 FILE: \\nas0101\proj\11111111\Documents\DOT Offices\DH\dte_3\Projects\Carry Detail\03_Detail_Revision\2023\604699_INCIDENTAL_CONSTRUCTION.dgn

USER NAME = anthony.grunstad	DESIGNED -	REVISED -
	DRAWN -	REVISED -
PLOT SCALE = 100,000 ' / in.	CHECKED -	REVISED -
PLOT DATE = 10/3/23	DATE -	REVISED -

**STATE OF ILLINOIS
DEPARTMENT OF TRANSPORTATION**

SCALE: SHEET OF SHEETS STA. TO STA.

F.A. RTE.	SECTION	COUNTY	TOTAL SHEETS	SHEET NO.
CONTRACT NO.				
ILLINOIS FED. AID PROJECT				