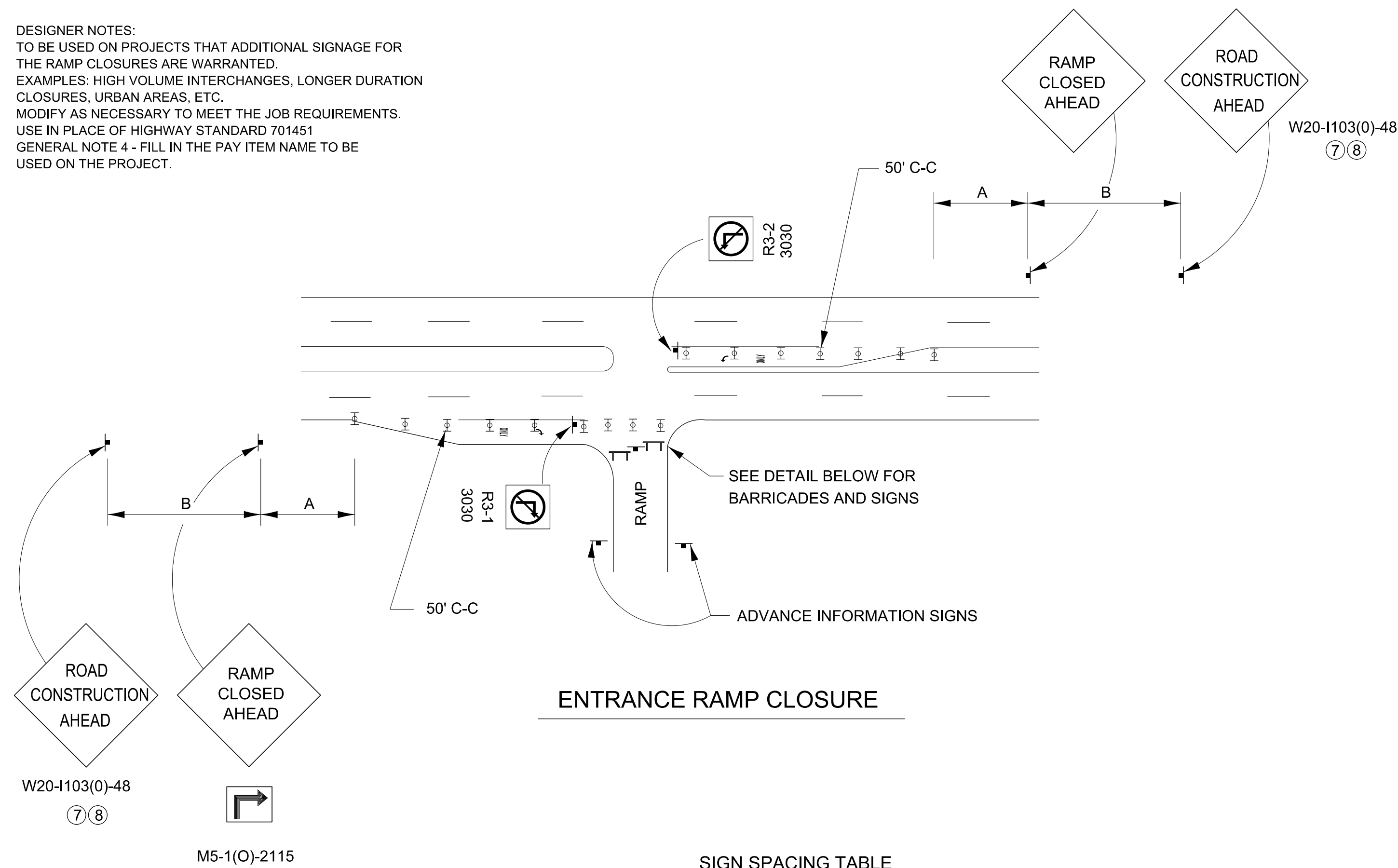


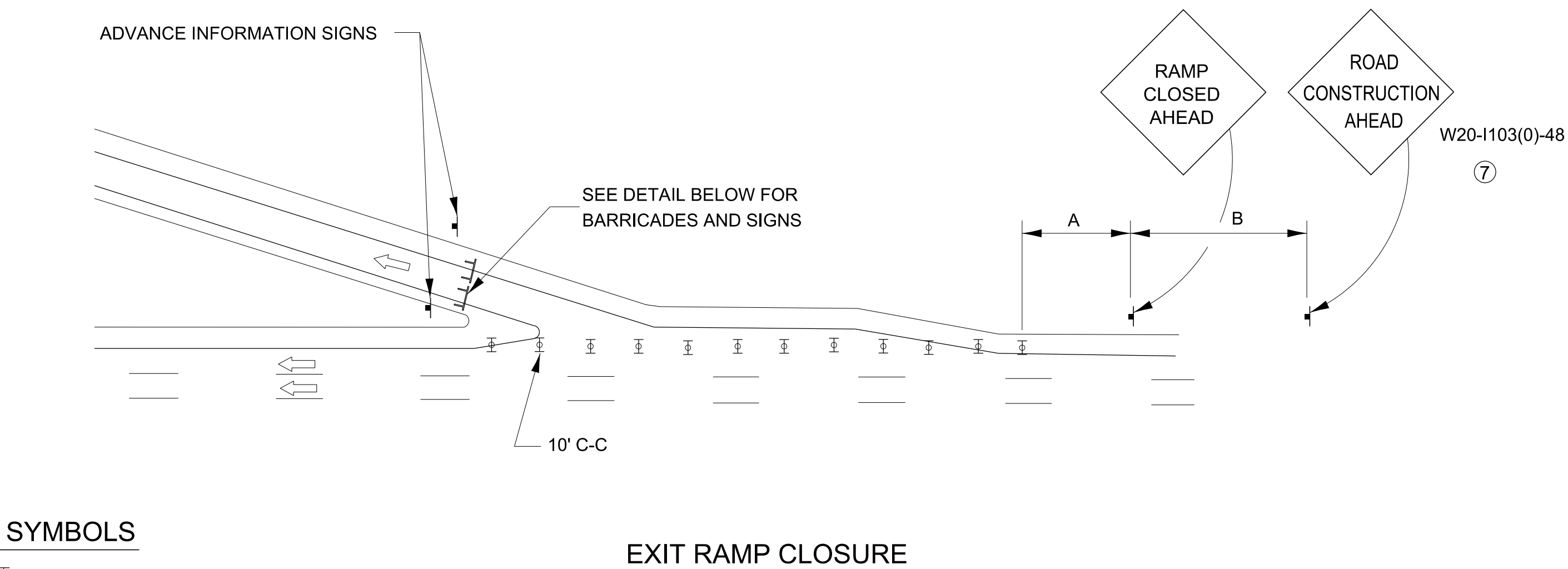
DESIGNER NOTES:
 TO BE USED ON PROJECTS THAT ADDITIONAL SIGNAGE FOR THE RAMP CLOSURES ARE WARRANTED.
 EXAMPLES: HIGH VOLUME INTERCHANGES, LONGER DURATION CLOSURES, URBAN AREAS, ETC.
 MODIFY AS NECESSARY TO MEET THE JOB REQUIREMENTS.
 USE IN PLACE OF HIGHWAY STANDARD 701451
 GENERAL NOTE 4 - FILL IN THE PAY ITEM NAME TO BE USED ON THE PROJECT.



SIGN SPACING TABLE

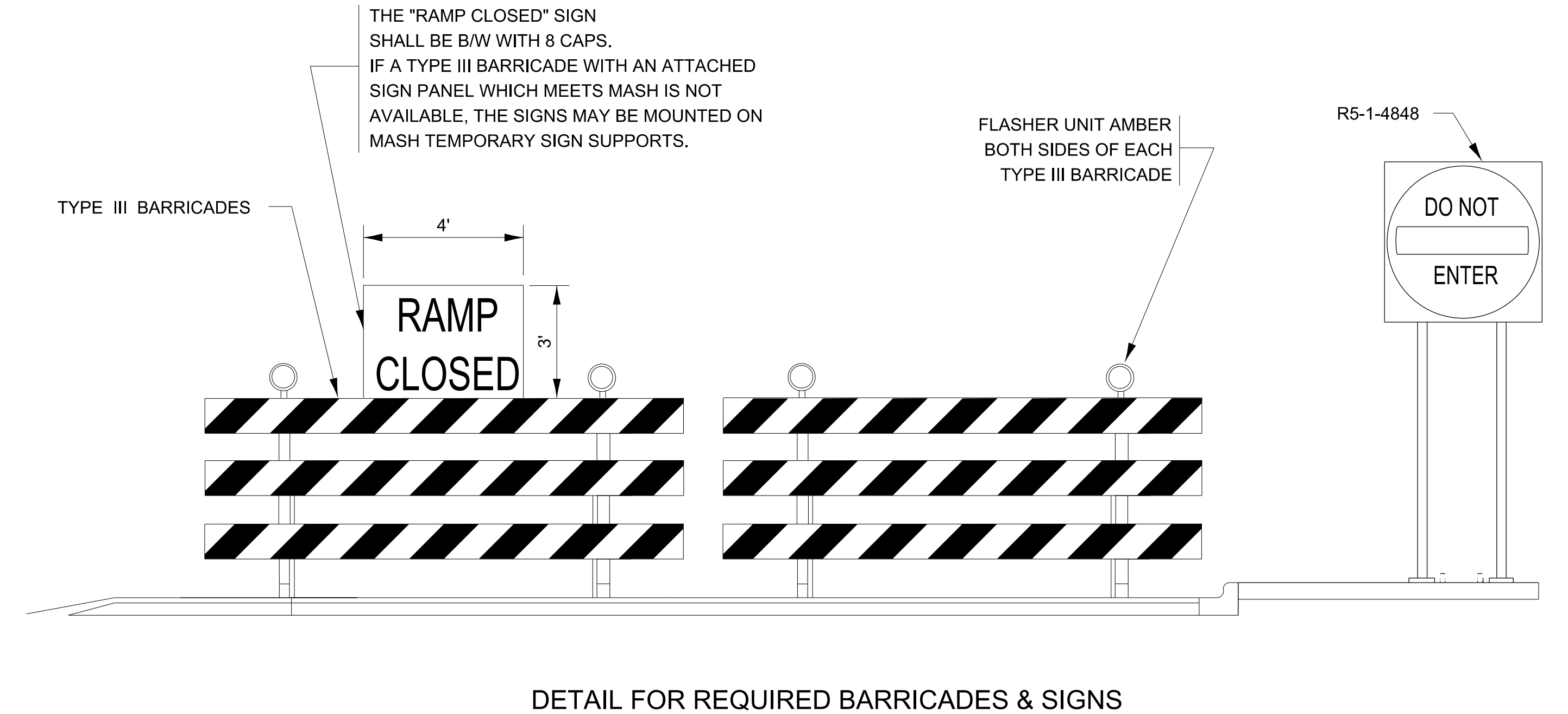
FACILITY	DISTANCE BETWEEN SIGNS	
	A	B
EXPRESSWAY >24 HOURS	1000'	1500'
EXPRESSWAY ≤24 HOURS	500'	500'
ARTERIAL ≥45 MPH	350'	350'
ARTERIAL <45 MPH	150'	150'

DISTANCES MAY BE SHORTENED DEPENDING UPON THE PROXIMITY OF ADJACENT RAMP OR INTERSECTIONS.

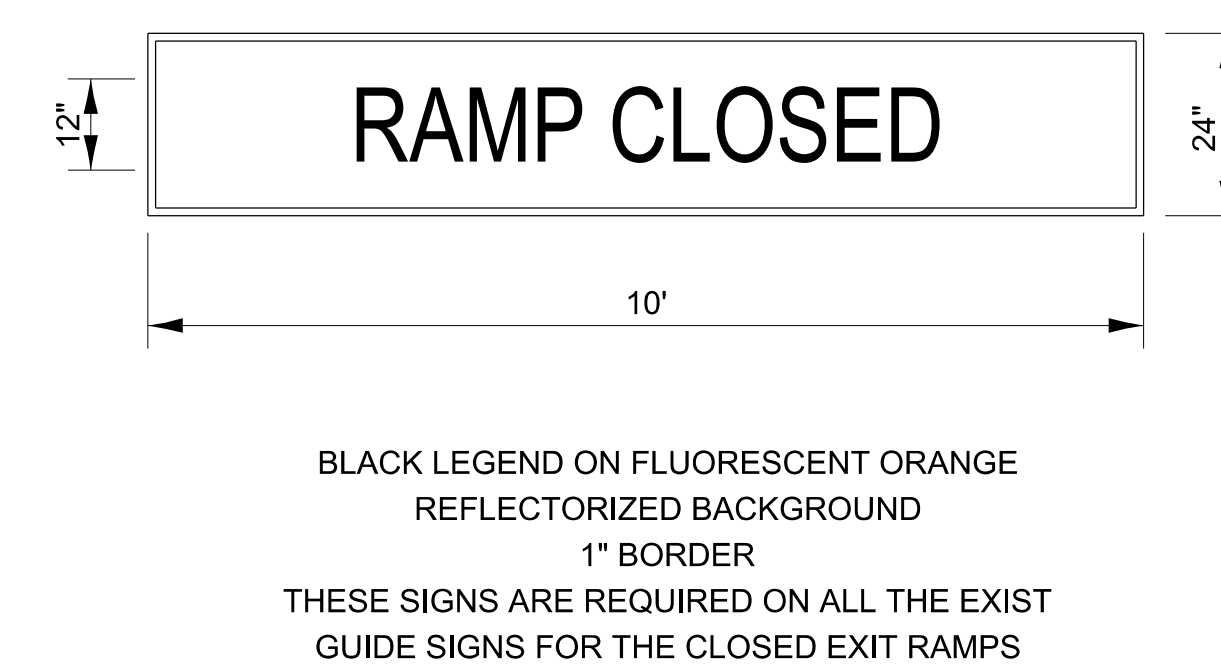


SYMBOLS

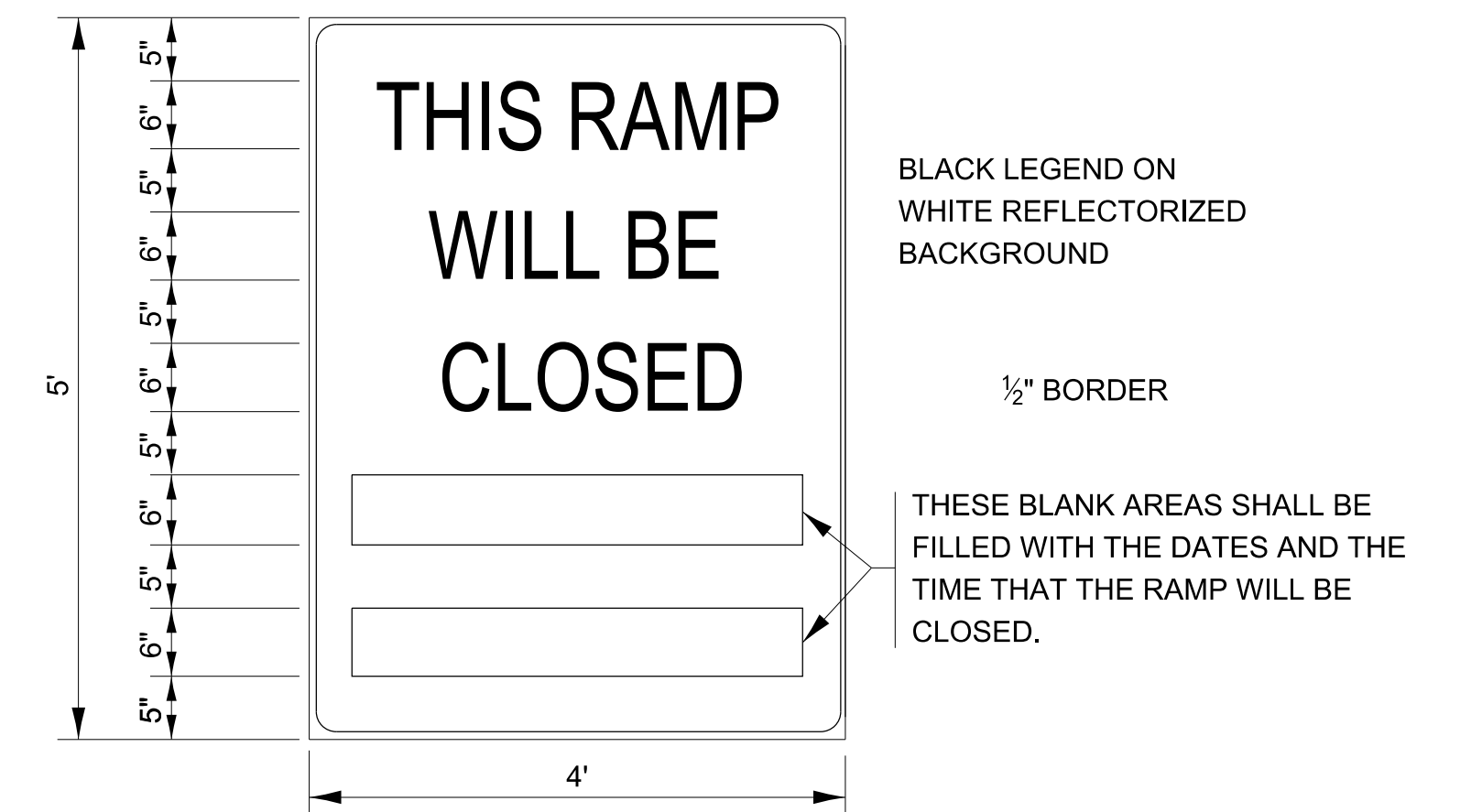
- ☐ DRUM WITH STEADY BURN MONO-DIRECTIONAL LIGHT
- ☐ TYPE III BARRICADE WITH FLASHING LIGHT



RAMP CLOSURE ADVANCE WARNING SIGN



RAMP CLOSURE ADVANCE INFORMATION SIGN



THESE SIGNS ARE REQUIRED ON BOTH SIDES OF THE RAMP, MINIMUM OF 1 WEEK IN ADVANCE OF THE CLOSURE.

GENERAL NOTES:

- 1 STEADY BURN LIGHTS WILL NOT BE REQUIRED FOR DAY OPERATIONS.
- 2 A FLAGGER SHALL BE POSITIONED AT EACH CLOSED RAMP THAT IS OPEN TO CONSTRUCTION VEHICLES.
- 3 ALL ROUTE MARKERS AND SIGN ASSEMBLIES WHICH DIRECT MOTORISTS TO A CLOSED ENTRANCE RAMP SHALL BE COVERED.
- 4 THE SIGNING AND BARRICADING WHICH IS REQUIRED BY THIS DETAIL SHALL BE INCLUDED IN THE COST OF TRAFFIC CONTROL AND PROTECTION (EXPRESSWAYS).
- 5 AUTHORIZATION FROM THE DISTRICT'S BUREAU OF OPERATIONS IS REQUIRED FOR ALL RAMP CLOSURES.
- 6 THE RAMP CLOSURE ADVANCE INFORMATION SIGNS SHALL BE ERECTED IF THE CLOSURE TIME EXCEEDS TWENTY-FOUR (24) HOURS. ADDITIONAL ADVANCE WARNING SIGNS ON EXIT GUIDE SIGNING WILL BE REQUIRED FOR EXIT RAMP CLOSURES THAT EXCEED TWENTY-FOUR (24) HOURS IN LENGTH.
- 7 ROAD CONSTRUCTION AHEAD SIGNS MAY BE OMITTED WHEN THIS DETAIL IS USED IN CONJUNCTION WITH OTHER TRAFFIC CONTROL THAT ALREADY INCLUDES A ROAD CONSTRUCTION AHEAD SIGN.
- 8 ARTERIAL ROAD CONSTRUCTION AHEAD SIGNS MAY BE OMITTED ON CLOSURES LESS THAN 24 HOURS IN DURATION.

STATE OF ILLINOIS
 DEPARTMENT OF TRANSPORTATION

**FREEWAY ENTRANCE AND EXIT RAMP
 CLOSURE DETAILS**

USER NAME = anthony.grunstad	DESIGNED -	REVISED -
PLOT SCALE = 50,000' / in.	DRAWN -	REVISED -
PLOT DATE = 10/6/23	CHECKED -	REVISED -
	DATE -	REVISED -

SCALE:	SHEET	OF	SHEETS	STA.	TO	STA.
--------	-------	----	--------	------	----	------

F.A. RTE.	SECTION	COUNTY	TOTAL SHEETS	SHEET NO.
CONTRACT NO.				
ILLINOIS FED. AID PROJECT				

720-7

MODEL: det 3 details
 FILE NAME: p:\illinois\paw\benley.com\paw\DOT\Documents\DOT Offices\District 3\Projects\3-Darcy Details\03 Detail Revisions 2023\700-799 WORK_ZONE - SIGNING - PAVEMENT MARKING.dgn